
**COMMUNITY FACILITIES DISTRICT
ADMINISTRATION REPORT
FOR FISCAL YEAR 2012-2013**

COMMUNITY FACILITIES DISTRICT NO. 87-5E

**RANCHO SANTA MARGARITA TOWNCENTER
COUNTY OF ORANGE**

Prepared for

COUNTY OF ORANGE
10 Civic Center Plaza, Third Floor
Santa Ana, CA 92701-4062

Prepared by

DAVID TAUSSIG & ASSOCIATES, INC.
5000 Birch Street, Suite 6000
Newport Beach, California 92660
(949) 955-1500

October 1, 2012

TABLE OF CONTENTS

<i>Section</i>	<i>Page</i>
District Summary	iii
I. Background.....	1
II. Improvements and Cost Estimates.....	2
III. Services	3
IV. Rate and Method of Apportionment of Special Tax.....	4
V. Special Tax Requirement.....	7
VI. Parcel Changes.....	8
VII. Estimated Maximum Special Taxes.....	11
VIII. Special Tax Roll.....	13
IX. Top Taxpayers	14
X. Summary of the Mello-Roos Community Facilities Act of 1982.....	15

TABLES AND APPENDICES

<i>Table</i>	<i>Page</i>
District Summary	iv
Table II-1 Estimate of Costs and Expenses	2
Table III-1 Authorized Services	3
Table IV-1 Table 1 and FY 2012-2013 Special Tax Rates	5
Table V-1 Special Tax Requirement	7
Table VI-1 Assessor's Parcel Numbers and Acreage at Formation	8
Table VI-2 Parcel Changes and Development	9
Table VI-3 Parcel Information by Tax Class	9
Table VII-1 Estimated Maximum Special Taxes	11
Table VII-2 Estimated Debt Service Coverage	12
Table IX-1 Top Taxpayers	14

APPENDICES

Appendix A: Boundary Map

Appendix B: Rate and Method of Apportionment

Appendix C: Special Tax Roll

**Fiscal Year 2012-2013
District Summary Sheet
Community Facilities District No. 87-5E
Rancho Santa Margarita
Fund No. T3**

Authorized Debt: \$30,000,000

Original Bond Issue: \$13,695,000 issued April 1993

Refunding Bond Issue: \$12,780,000 issued June 1999 to refund Original Bond Issue

Term of Bonds: Outstanding bonds will mature in 2018.

Additional Bonds: CFD No. 87-5E has remaining authorized unissued debt. CFD No. 87-5E has covenanted to limit the amount of Additional Bonds to fund additional public improvements to \$6,000,000.

Authorized Facilities: Foothill Circulation Phasing Plan Facilities
Roadways
Library Facilities

Authorized Services: Police Protection
Fire Protection
Ambulance
Paramedic
Library
Open Space Services
Recreation Program(s)
Flood and Storm Production

Special Tax Rates: See following table

CLASS	LAND USE	SQUARE FOOTAGE OF IMPROVEMENTS	"TABLE 1" SPECIAL TAX	STEP 1 "TABLE 1" SPECIAL TAX ¹	SPECIAL TAX LEVY	PERCENTAGE of "TABLE 1" SPECIAL TAX ²	PERCENTAGE of STEP 1 "TABLE 1" SPECIAL TAX ³
1	Single Family Detached	2,700 +	\$3,678.44 /unit	\$3,200.24 /unit	\$860.52 /unit	23.39%	26.89%
2	Single Family Detached	2,400 - 2,699	\$3,169.26 /unit	\$2,757.26 /unit	\$741.40 /unit	23.39%	26.89%
3	Single Family Detached	1,700 - 2,399	\$2,602.99 /unit	\$2,264.60 /unit	\$608.93 /unit	23.39%	26.89%
4	Single Family Detached	< 1,700	\$1,981.93 /unit	\$1,724.28 /unit	\$463.64 /unit	23.39%	26.89%
5	Townhomes	1,650 +	\$1,924.85 /unit	\$1,674.62 /unit	\$450.29 /unit	23.39%	26.89%
6	Townhomes	1,350 - 1,649	\$1,867.76 /unit	\$1,624.95 /unit	\$436.93 /unit	23.39%	26.89%
7	Townhomes	< 1,350	\$1,584.63 /unit	\$1,378.63 /unit	\$370.70 /unit	23.39%	26.89%
8	Condominiums	1,200 +	\$1,529.83 /unit	\$1,330.95 /unit	\$357.88 /unit	23.39%	26.89%
9	Condominiums	850 - 1,199	\$1,132.53 /unit	\$985.30 /unit	\$264.94 /unit	23.39%	26.89%
10	Condominiums	< 850	\$906.80 /unit	\$788.92 /unit	\$212.13 /unit	23.39%	26.89%
11	Apartment	N/A	\$895.06 /unit	\$778.70 /unit	\$209.38 /unit	23.39%	26.89%
12	Commercial/Industrial	N/A	\$12,010.31 /acre or \$0.9362 /sq.ft. of improvements, whichever is greater	\$10,448.97 /acre or \$0.8145 /sq.ft. of improvements, whichever is greater	\$2,809.60 /acre or \$0.2190 /sq.ft. of improvements, whichever is greater	23.39%	26.89%
0	Undeveloped	N/A	\$25,801.61 /acre	\$863.00 /acre	\$232.05 /acre	0.90%	26.89%

Maximum Special Tax: The maximum special tax for a parcel of Developed Property is equal to the greater of (i) the Base Maximum Special Tax or (ii) the amount determined by reference to "Table 1" of Section C of the Rate and Method of Apportionment.

Base Maximum Tax: The Base Maximum Special Tax for Developed Property is \$0.5708 per square foot (or \$24,865.45 per acre).

Annual Escalator: Maximum Special Tax rates will escalate three and one-half percent (3.50%) per year.

Term of Special Tax: The special tax will be levied each year until all of the authorized facilities are built and all special tax bonds are repaid.

¹ Per Section D of the Rate and Method of Apportionment, the "Step 1" special tax is up to 87% of the "Table 1" rate on Developed property; and up to \$863 per acre on Undeveloped property.

² FY 2012-2013 special tax levy as a percent of the Table 1 special tax.

³ FY 2012-2013 special tax levy as a percent of the Step 1 special tax.

I. BACKGROUND

The Board of Supervisors (the "Board") of the County, acting on behalf of CFD No. 87-5E (Rancho Santa Margarita Towncenter), adopted Resolution No. 88-1222 on August 30, 1988 stating its intent to form CFD No. 87-5E (boundary map included as Appendix A). On the same date, the Board also adopted Resolution No. 88-1223 stating its intent to have the District incur bonded indebtedness in an amount not to exceed \$30,000,000.

On October 5, 1988, following public hearings, the Board adopted Resolution No. 88-1388 establishing the District and authorizing the levy of a special tax and Resolution No. 88-1389 determining the necessity to incur up to \$30,000,000 of bonded indebtedness.

At a special election held on October 25, 1988, the owners of property within the boundaries of CFD No. 87-5E (Rancho Santa Margarita Towncenter) authorized bonded indebtedness in an amount not to exceed \$30,000,000 and approved the rate and method of apportionment of the special tax to pay principal and interest on the bonds, annual administration fees to levy the special tax, and to pay for certain services to be provided within CFD No. 87-5E.

Bonds in the amount of \$13,695,000 were issued with a date of April 1, 1993.

The South County Public Financing Authority (the "Authority") is a California joint powers authority organized pursuant to the Joint Exercise of Powers Agreement dated March 4, 1994. On July 9, 1999, the Authority issued \$75,290,000 in Special Tax Revenue Bonds (the "1999 Series A Bonds") pursuant to the Marks-Roos Local Bond Pooling Act of 1985.

The 1999 Series A Bonds are to be repaid through the levying of special taxes within five of the County CFD's. The portion of the 1999 Series A Bonds allocated to each of the five CFD's is the "Local Obligation".

On June 29, 1999, the Board adopted Resolution No. 99-259 authorizing the \$12,780,000 Local Obligation of CFD No. 87-5E (Rancho Santa Margarita Towncenter).

II. IMPROVEMENTS AND COST ESTIMATES

The improvements to be funded by CFD No. 87-5E (Rancho Santa Margarita Towncenter) and the estimated costs are presented in Table II-1⁴.

TABLE II-1	
ESTIMATE OF COSTS AND EXPENSES	
COMMUNITY FACILITIES DISTRICT NO. 87-5E	
RANCHO SANTA MARGARITA TOWNCENTER	
Foothill Circulation Phasing Plan (FCPP) Improvements	
Backbone I	\$10,925,600
Auxiliary	\$3,062,100
Other Improvements	
Antonio Parkway	\$889,882
<u>Library Facilities</u>	<u>\$3,500,000</u>
Total Improvements	\$18,377,582
Preliminary FCPP Feasibility Studies	\$85,000
Contingencies	\$2,837,418
Issuance and Formation Costs (3%)	\$900,000
Reserve Fund (10%)	\$3,000,000
Capitalized Interest	\$4,200,000
<u>Discount (2%)</u>	<u>\$600,000</u>
Total Bond Authorization	\$30,000,000

For Further details regarding the improvements, references is made to the Engineer's Report for CFD No. 87-5E (Rancho Santa Margarita Towncenter).

⁴ Source: Engineer's Report for Community Facilities District No. 87-5E, Rancho Santa Margarita Towncenter, September 1988.

III. SERVICES

Services authorized to be financed by CFD No. 87-5E (Rancho Santa Margarita Towncenter) and the estimated annual fees are summarized in Table III-1.⁵

TABLE III-1	
AUTHORIZED SERVICES	
COMMUNITY FACILITIES DISTRICT NO. 87-5E	
RANCHO SANTA MARGARITA TOWNCENTER	
Description	Annual Fee
Paramedic and Fire	\$110,000
Sheriff	\$125,000
Library	\$20,000
Flood Control and Storm Drain	\$1.00 per lineal foot
Parks	\$7,200 to \$10,000 per acre
District Administration	\$75,000

Although CFD No. 87-5E (Rancho Santa Margarita Towncenter) is authorized to fund the services in Table III-1, that authority had not been exercised to date, nor are any services being funded by CFD No. 87-5E (Rancho Santa Margarita Towncenter) for Fiscal Year 2012-2013.

⁵ Source: Engineer's Report for Community Facilities District No. 87-5E, Rancho Santa Margarita Towncenter, September 1988.

IV. RATE AND METHOD OF APPORTIONMENT OF SPECIAL TAX

The Board adopted and approved the Rate and Method of Apportionment of Special Tax (the "Rate and Method") CFD No. 87-5E (Rancho Santa Margarita Towncenter) as set forth in Exhibit B to Resolution No. 88-1388, the Resolution of Formation Establishing the District and Authorizing the Levy of the Special Tax. A copy of the Rate and Method as adopted by the Board is included in Appendix B.

The Rate and Method first classifies property to be taxed into "Developed Property", which is all Assessor's Parcels in CFD No. 87-5E (Rancho Santa Margarita Towncenter) for which a building permit has been issued on or before March 1 of the preceding fiscal year and "Undeveloped Property," which is all other taxable property not classified as Developed Property. Developed Property is further classified depending on type of unit, (i.e., single family detached, townhome, condominiums, or apartment and unit size).

Maximum and FY 2012-13 Special Tax Rates

The amount of special taxes that CFD No. 87-5E (Rancho Santa Margarita Towncenter) may levy is limited by the maximum rates set forth in the Rate and Method. Pursuant to Section C of the Rate and Method, the maximum special tax for a parcel of Developed Property is equal to the greater of (i) the "Base Maximum Special Tax" or (ii) the amount determined by reference to Table 1 of Section C (the "Table 1" Special Tax rates). The Base Maximum Special Tax was established for the contingency of a shortfall in revenues resulting from significant changes in proposed development. The Base Maximum Special Tax has not been levied in CFD No. 87-5E (Rancho Santa Margarita Towncenter), hence, all discussion of maximum special tax rates focuses on the "Table 1" special tax rates. The "Table 1" and Base Maximum Special Tax rates for Developed Property escalate annually at three and one-half percent (3.5%). The maximum special tax rate for Undeveloped Property does not escalate.

The Fiscal Year 2012-2013 special tax rates on Developed Property are approximately three-tenths percent (0.3%) lower than the Fiscal Year 2011-2012 rates. The Fiscal Year 2012-2013 Undeveloped Property Special Tax rate is approximately three and seven-tenths percent (3.7%) lower than last year's rate. The Fiscal Year 2012-2013 "Table 1" Special Tax rates and special tax levy for each class of property are presented in Table IV-1.

TABLE IV-1					
TABLE 1 AND FY 2012-13 SPECIAL TAX RATES					
COMMUNITY FACILITIES DISTRICT NO. 87-5E					
RANCHO SANTA MARGARITA TOWNCENTER					
CLASS	LAND USE	SQUARE FOOTAGE OF IMPROVEMENTS	"TABLE 1" SPECIAL TAX	SPECIAL TAX LEVY	PERCENTAGE OF "TABLE 1" SPECIAL TAX
1	Single Family Detached	2,700 +	\$3,678.44 /unit	\$860.52 /unit	23.39%
2	Single Family Detached	2,400 - 2,699	\$3,169.26 /unit	\$741.40 /unit	23.39%
3	Single Family Detached	1,700 - 2,399	\$2,602.99 /unit	\$608.93 /unit	23.39%
4	Single Family Detached	< 1,700	\$1,981.93 /unit	\$463.64 /unit	23.39%
5	Townhomes	1,650 +	\$1,924.85 /unit	\$450.29 /unit	23.39%
6	Townhomes	1,350 - 1,649	\$1,867.76 /unit	\$436.93 /unit	23.39%
7	Townhomes	< 1,350	\$1,584.63 /unit	\$370.70 /unit	23.39%
8	Condominiums	1,200 +	\$1,529.83 /unit	\$357.88 /unit	23.39%
9	Condominiums	850 - 1,199	\$1,132.53 /unit	\$264.94 /unit	23.39%
10	Condominiums	< 850	\$906.80 /unit	\$212.13 /unit	23.39%
11	Apartment	N/A	\$895.06 /unit	\$209.38 /unit	23.39%
12	Commercial/Industrial	N/A	\$12,010.31 /acre or \$0.9362 /sq.ft. of improvements, whichever is greater	\$2,809.60 /acre or \$0.2190 /sq.ft. of improvements, whichever is greater	23.39%
0	Undeveloped	N/A	\$25,801.61 /acre	\$232.05 /acre	0.90%

The Fiscal Year 2012-2013 Base Maximum Special Tax is \$24,865.45 per acre for Developed Property. If applicable, the Base Maximum Special Tax would be levied instead of, not in addition to, the "Table 1" Special Tax rates.

Apportionment of Special Taxes

The amount of the special tax requirement that is apportioned to each parcel is determined through the application of Section D of the Rate and Method. Section D apportions the special tax requirement in six steps which prioritize the order in which Developed Property and Undeveloped Property are taxed.

The first step states that the special tax shall be levied, in equal percentages, on Developed Property up to 87% of the "Table 1" maximum rate and on all Undeveloped Property⁶ up to \$863 per acre.

⁶ The Undeveloped Property taxed in the first steps is exclusive of Undeveloped Property owned by or offered for dedication to a public agency or owned by a church, a public utility for use as an unmanned facility, or homeowners association, or open space being used as a golf course.

If the special taxes raised pursuant to the first step are less than the special tax requirement, then the special tax shall be levied proportionately on all Undeveloped Property up to \$9,831 per acre.

If the special taxes raised pursuant to the first two steps are less than the special tax requirement, then the special tax levied on all Developed Property and Undeveloped Property shall be increased, in equal percentages, up to 100% of the applicable "Table 1" rate for Developed Property and up to \$11,300 per acre for Undeveloped Property.

If the special taxes raised in the first three steps are less than the special tax requirement, then the special tax levy for all parcels of Developed Property subject to the Base Maximum Special Tax shall be increased proportionally up to 100% of the Base Maximum Special Tax rate.

If the special taxes raised in the first four steps are less than the special tax requirement, then the special tax shall be levied on each parcel of Undeveloped Property offered for dedication to a public agency, or owned by a church or by a homeowners association, or open space being used as a golf course, which is not exempt from the levy of Special Tax pursuant to Section E of the Rate and Method, up to the Maximum Special Tax for Undeveloped Property.

If the special taxes raised in the first five steps are less than the special tax requirement, then the special tax shall be levied proportionally on each parcel of Undeveloped Property conveyed to a public agency, which is not exempt from the levy of special taxes, up to the Maximum Special Tax for Undeveloped Property.

The Board may also levy a special tax for services on each class of Developed Property in equal percentages, provided that the total special tax levied in any fiscal year does not exceed the Maximum Special Tax.

There is no provision for prepayment of the special taxes.

V. SPECIAL TAX REQUIREMENT

Beginning with Fiscal Year 1988-89 and for each following fiscal year, the Board shall determine the amount to be collected from taxable property in CFD No. 87-5E (Rancho Santa Margarita Towncenter) for the fiscal year. The special tax requirement shall include sums necessary to pay current debt service (interest and principal), to create or replenish reserve funds, and to pay for administrative expenses. Since the Board may levy a special tax for services, the special tax requirement may include an amount for services. The Fiscal Year 2012-2013 special tax requirement for CFD No. 87-5E is presented in Table V-1⁷.

TABLE V-1	
SPECIAL TAX REQUIREMENT	
COMMUNITY FACILITIES DISTRICT NO. 87-5E	
RANCHO SANTA MARGARITA TOWNCENTER	
Interest Payments Due February 15, 2013 and August 15, 2013	
Original Bonds: April 1, 1993 and July 15, 1999	\$328,770.00
Principal Payment due August 15, 2013	
<u>Original Bonds: April 1, 1993 and July 15, 1999</u>	<u>\$810,000.00</u>
Subtotal Debt Service	\$1,138,770.00
<u>Less: Corrective Action to Reduce Over</u>	
<u>Accumulation of Cash</u>	<u>(\$296,944.00)</u>
Total Debt Service Requirements	\$841,826.00
<u>Estimated Administrative Expenses</u>	<u>\$29,001.88</u>
Subtotal	\$870,827.88
<u>Collection Charge</u>	<u>\$2,620.00</u>
Special Tax Requirement	\$873,447.88

⁷ Source: County Administrative Office, July 16, 2012.

VI. PARCEL CHANGES

Upon formation, the District was comprised of all or a portion of the Assessor's parcels listed in Table VI-1 below. The boundaries of CFD No. 87-5E (Rancho Santa Margarita Towncenter) were not coterminous with each Assessor's parcel, therefore the total parcel acreage was greater than the acreage within the boundaries of CFD No. 87-5E.

TABLE VI-1 ASSESSOR'S PARCEL NUMBERS AND ACREAGE AT FORMATION COMMUNITY FACILITIES DISTRICT NO. 87-5E RANCHO SANTA MARGARITA TOWNCENTER		
ASSESSOR'S PARCEL NUMBER	TOTAL ACREAGE	ACREAGE IN CFD NO. 87-5E
125-032-13	1.00	1.00
125-032-73	139.91	108.33
125-032-76	162.93	162.93
125-032-78	4.60	4.60
125-032-79	4.50	4.50
125-032-80	2.85	2.85
125-032-84	23.62	21.85
805-011-28	2.47	2.47
805-011-39	29.34	17.76
805-011-40	13.22	6.66
TOTAL	384.44	332.95

A summary of development since formation is presented in Table VI-2⁸.

⁸ Source: Engineer's Report for Community Facilities District No. 87-5E, Rancho Santa Margarita Towncenter, September 1988.

TABLE VI-2 PARCEL CHANGES AND DEVELOPMENT COMMUNITY FACILITIES DISTRICT NO. 87-5E RANCHO SANTA MARGARITA TOWNCENTER					
CLASSIFICATION	PARCEL COUNT	PARCEL ACREAGE	TAXABLE ACREAGE	DWELLING UNITS	IMPROVED SF
Formation	10	332.95	332.95	0	0
FY 2012-13					
Taxable Property					
Subdivided Residential Lots	806	92.13	89.50	1,891	2,136,358
Subdivided Non-Residential Lots	44	90.64	90.62	-	1,289,754
Unsubdivided Property	11	15.48	15.48	-	-
Total Taxable Property	861	198.25	195.60	1,891	3,426,112
Exempt Property	207	108.71	-	-	-
FY 2012-13 Total	1,068	306.96	195.60	1,891	3,426,112
Change	1,058	(25.99)	(137.35)	1,891	3,426,112

The number of parcels and improved square feet for each tax class as of March 1, 2012 is summarized in Table VI-3.

TABLE VI-3					
PARCEL INFORMATION BY TAX CLASS					
COMMUNITY FACILITIES DISTRICT NO. 87-5E					
RANCHO SANTA MARGARITA TOWNCENTER					
CLASS	PARCEL COUNT	PARCEL ACREAGE	TAXABLE ACREAGE	DWELLING UNITS	IMPROVED SF
1 (SFD 2,700 +)	-	-	-	-	-
2 (SFD 2,400 - 2,699)	-	-	-	-	-
3 (SFD 1,700 - 2,399)	92	7.23	7.23	92	173,753
4 (SFD < 1,700)	187	12.47	12.47	187	288,190
5 (THM 1,650 +)	96	7.00	7.00	96.00	177,594
6 (THM 1,350 - 1,649)	3	0.20	0.20	3.00	4,822
7 (THM < 1,350)	35	2.46	2.46	35.00	47,180
8 (CONDO 1,200 +)	235	15.17	12.73	235	320,478
9 (CONDO 850 - 1,199)	148	8.63	8.44	148	150,368
10 (CONDO < 850)	-	-	-	-	-
11 (APT)	10	38.97	38.97	1095	973,973
12 (Commercial/Industrial)	44	90.64	90.62	-	1,289,754
0 (Undeveloped)	11	15.48	15.48	-	-
EX (Exempt)	207	108.71	-	-	-
Totals⁹	1,068	306.96	195.60	1,891	3,426,112

Changes in Development from Preceding Fiscal Year

According to building permit records from the building division of the City of Rancho Santa Margarita, the following building permits were issued for the period March 2, 2011 to March 1, 2012:

- One (1) permit for additions to an existing single family home for a total of 192 square feet.
- One (1) permit for new commercial/industrial development.

There were no new subdivisions or parcel maps recorded between March 2, 2011 and March 1, 2012.

⁹ May not total due to rounding.

VII. ESTIMATED MAXIMUM SPECIAL TAXES

Based on the amount and type of Developed Property used to calculate the Fiscal Year 2012-2013 special tax levy and applying Fiscal Year 2012-2013 Maximum Special Tax rates, CFD No. 87-5E has the potential to generate the revenue indicated in Table VII-1.

Table VII-2 compares the Estimated Maximum Special Taxes as indicated in Table VII-1, escalated by three and one-half percent (3.5%) annually, with the annual debt service for the 1999 Series A Local Obligation Bonds.

TABLE VII-1			
ESTIMATED MAXIMUM SPECIAL TAXES			
COMMUNITY FACILITIES DISTRICT NO. 87-5E			
RANCHO SANTA MARGARITA TOWNCENTER			
TAX CLASS	UNITS, ACRES, OR SF	APPLICABLE "TABLE 1" SPECIAL TAX	ESTIMATED MAXIMUM SPECIAL TAXES
Developed			
1 (SFD 2,700 +)	0 Unit	\$3,678.44	\$0.00
2 (SFD 2,400 - 2,699)	0 Units	\$3,169.26	\$0.00
3 (SFD 1,700 - 2,399)	92 Units	\$2,602.99	\$239,475.08
4 (SFD < 1,700)	187 Units	\$1,981.93	\$370,620.91
5 (THM 1,650 +)	96 Units	\$1,924.85	\$184,785.60
6 (THM 1,350 - 1,649)	3 Units	\$1,867.76	\$5,603.28
7 (THM < 1,350)	35 Units	\$1,584.63	\$55,462.05
8 (CONDO 1,200 +)	235 Units	\$1,529.83	\$359,510.05
9 (CONDO 850 - 1,199)	148 Units	\$1,132.53	\$167,614.44
10 (CONDO < 850)	0 Units	\$906.80	\$0.00
11 (APT)	1095 Units	\$895.06	\$980,090.70
12 (Commercial/Industrial)			
Levied at SF rate	946,655	\$0.94	\$886,258.41
Levied at per acre rate	39.050	\$12,010.31	\$469,002.61
Subtotal Developed Property			\$3,718,423.13
Undeveloped			
0 (Undeveloped)	15.480	\$25,801.61	\$399,408.92
Estimated Maximum Special Taxes			\$4,117,832.05

TABLE VII-2 ESTIMATED DEBT SERVICE COVERAGE COMMUNITY FACILITIES DISTRICT NO. 87-5E RANCHO SANTA MARGARITA TOWNCENTER				
FISCAL YEAR	ESTIMATED MAXIMUM SPECIAL TAX	ANNUAL DEBT SERVICE	ESTIMATED EXCESS REVENUE	DEBT SERVICE COVERAGE
2012/2013	\$4,118,000	\$1,139,000	\$2,979,000	3.62
2013/2014	\$4,262,000	\$1,136,000	\$3,126,000	3.75
2014/2015	\$4,411,000	\$1,136,000	\$3,275,000	3.88
2015/2016	\$4,566,000	\$1,138,000	\$3,428,000	4.01
2016/2017	\$4,725,000	\$1,137,000	\$3,588,000	4.16
2017/2018	\$4,891,000	\$1,138,000	\$3,753,000	4.30
Total	\$26,973,000	\$6,824,000	\$20,149,000	

Assumptions

1. Development in future fiscal years is assumed to be the same as in Fiscal Year 2012-2013.
2. The Estimated Maximum Special Taxes for any given fiscal year were determined by escalating the previous year amount by 3.5%.
3. Existing Annual Debt Service equals principal and interest on the 1999 Series A Local Obligation Bonds.
4. Estimated Excess Revenue equals Estimated Maximum Special Taxes less then Existing Annual Debt Service.
5. Debt Coverage equals Estimated Maximum Special Taxes divided by the Existing Annual Debt Service.

VIII. SPECIAL TAX ROLL

A list of Assessor's parcels within CFD No. 87-5E (Rancho Santa Margarita Towncenter) and the Special Tax enrolled for Fiscal Year 2012-2013 associated therewith is included in Appendix C.

IX. TOP TAXPAYERS

Property ownership in CFD No. 87-5E (Rancho Santa Margarita Towncenter) is gradually becoming more diversified. Table IX-1 presents ownership, the total special tax levy and percent of total for the top taxpayers in CFD No. 87-5E.

TABLE IX-1 TOP TAXPAYERS		
COMMUNITY FACILITIES DISTRICT NO. 87-5E RANCHO SANTA MARGARITA TOWNCENTER		
TAXPAYER	TOTAL SPECIAL TAXES	PERCENT OF TOTAL
22751 El Prado LLC	\$104,273.62	11.94%
Crescent LP	\$66,165.59	7.58%
KRC Santa Margarita	\$38,253.93	4.38%
FG Rancho Santa Margarita	\$34,757.87	3.98%
Lowes HIW	\$30,110.45	3.45%
Target Corp.	\$29,444.18	3.37%
Sanderson J Ray – Big RSM	\$24,218.47	2.77%
CLPF--Buena Vida at Town	\$24,079.25	2.76%
Kohls Department Stores INC	\$21,557.86	2.47%
Antonio Acquisition Co. LLC	\$19,298.31	2.21%
Von Companies INC	\$13,932.82	1.60%
K&G/Marketplace LLC	\$12,488.68	1.43%
All Other Taxpayers	\$454,866.85	52.08%
Total	\$873,447.88	100.00%

X. SUMMARY OF MELLO-ROOS COMMUNITY FACILITIES ACT OF 1982

Due to the voter approval of California's Proposition 13 in 1978, local government agencies were confronted with a more difficult environment in which to generate tax revenue to build or improve public facilities and services.

Consequently, in 1982, a legislative bill, which was sponsored by Senator Henry Mello and Assemblyman Mike Roos, was enacted by the California State Legislature. The Mello-Roos Community Facilities Act [section 53311 et. Seq. of the Government Code], which bears the names of the sponsors, provided an alternative to conventional means of financing public infrastructure. It gave local government authorities the ability to establish "Community Facilities Districts" (CFDs) in order to enhance the generation of local property tax revenue by issuing special levies.

The Mello-Roos financing provided many cost saving features which conventional financing cannot such as low cost tax-exempt financing. The act complies with Proposition 13, which permits cities, counties, and special districts to create defined areas (CFDs) within their jurisdiction and, by a two-thirds vote within the defined area, impose special taxes on land owners to pay for debt services on bonds issued to finance the necessary public improvements.

Through the sale of bonds, a particular CFD may provide for the purchase, construction, or expansion of any real or other tangible property with an estimated useful life of at least five years. A CFD may also finance the cost of planning, designing, engineering, and consulting involved in the construction of improvements of the formation of the CFD. The facilities and services that can be financed by the Mello-Roos CFD may include, but are not limited to roads, libraries, child care, fire protection, police protection, and park maintenance and operation.

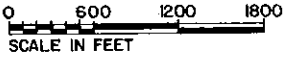
Formation of a CFD authorizes the public agency to levy a special tax on all taxable property within the CFD, as defined in the formation documents. Property owned or irrevocably offered to a public agency may be exempt from the special tax. Mello-Roos special taxes are collected at the same time and manner as regular property taxes, unless otherwise specified.

http://127.0.0.1/resources/Clients/Orange County/ADMIN/12_13/Reports/87_5Eadm rpt 1213.docx

APPENDIX A

BOUNDARY MAP

PROPOSED BOUNDARIES OF COMMUNITY FACILITIES DISTRICT 87-5E



RANCHO SANTA MARGARITA
 TOWN CENTER

BEING A PORTION OF PARCEL 1 OF CERTIFICATE OF COMPLIANCE NO.
 CC83-4, RECORDED MAY 11, 1984 AS INSTRUMENT NO. 84-197289
 OF OFFICIAL RECORDS IN THE OFFICE OF THE COUNTY RECORDER OF
 ORANGE COUNTY, CALIFORNIA

NOVEMBER 1987

GERALD F. OLDENBURG L.S. 3246

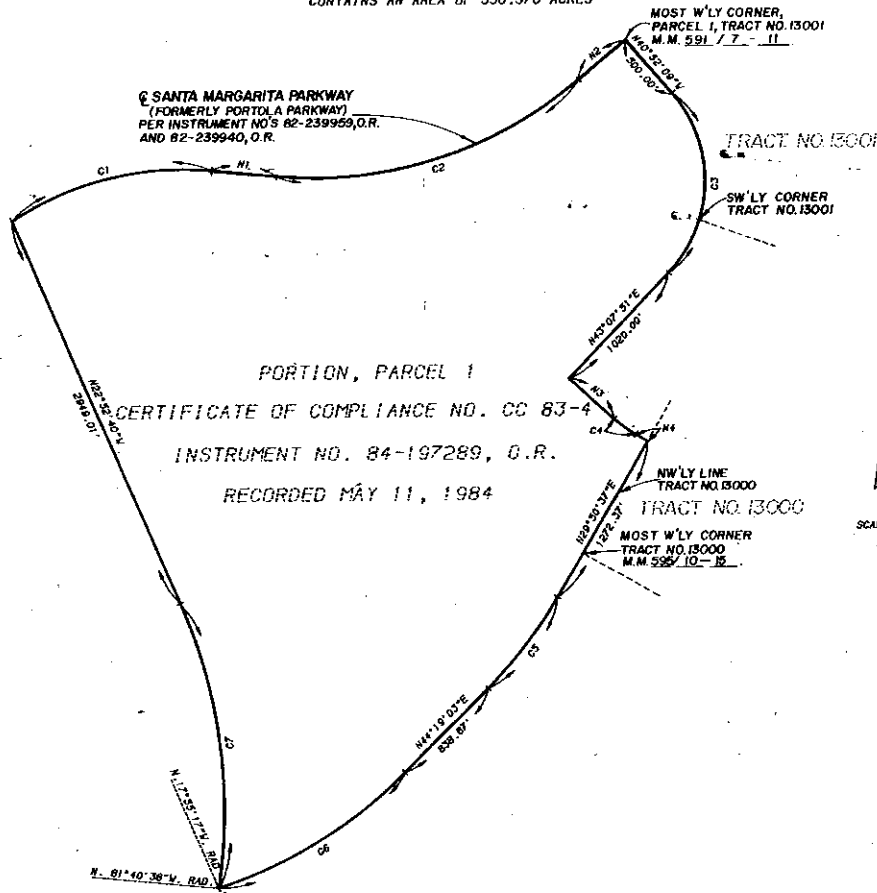
WILLIAMSON AND SCHMID, CIVIL ENGINEERS

CONTAINS AN AREA OF 350.576 ACRES

LEE A. BRANCH
 COUNTY RECORDER

Shel L. Bennett
 DEPUTY

Fee \$6.00



I HEREBY CERTIFY THAT THE WITHIN MAP SHOWING PROPOSED BOUNDARIES OF
 COMMUNITY FACILITIES DISTRICT 87-5E IN UNINCORPORATED TERRITORY OF
 THE COUNTY OF ORANGE, STATE OF CALIFORNIA, WAS APPROVED BY THE BOARD
 OF SUPERVISORS OF THE COUNTY OF ORANGE AT A REGULAR MEETING THEREOF,
 HELD ON THE 30th DAY OF August, 1988, BY ITS RESOLUTION NO.
88-1322.

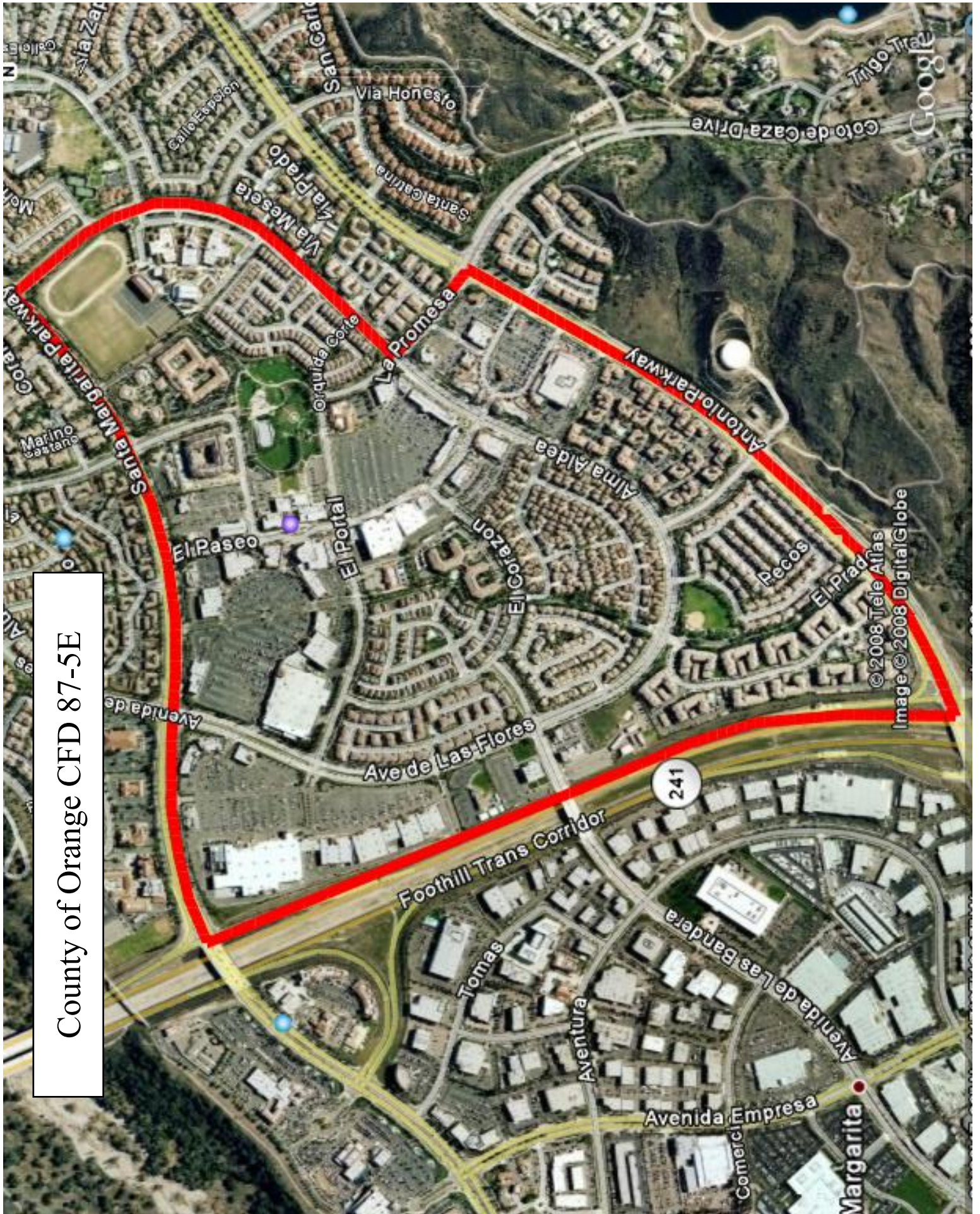
FILED IN THE OFFICE OF THE CLERK OF THE BOARD OF SUPERVISORS THIS
1st DAY OF September, 1988.

Linda D. Roberts
 LINDA D. ROBERTS - CLERK OF
 THE BOARD OF SUPERVISORS

NOTE	DELTA	RADIUS	LENGTH	CHORD	TANGENT
C1	38°41'48"	2100.00	1494.96	1426.03	736.05
C2	48°52'48"	2800.00	2274.70	2212.66	1204.53
C3	84°00'00"	850.00	1392.77	1271.35	655.36
C4	13°17'14"	800.00	185.52	185.11	93.18
C5	14°28'28"	3200.00	808.37	806.23	406.35
C6	27°45'40"	3200.00	1556.47	1535.34	780.76
C7	37°12'02"	3800.00	2069.30	2043.62	1060.99

NOTE	BEARING	DISTANCE
N1	N 84°16'21"W	455.00
N2	N 49°07'51"E	426.20
N3	N 46°52'09"W	483.27
N4	N 60°09'23"W	97.34

County of Orange CFD 87-5E



APPENDIX B

*RATE AND METHOD
OF APPORTIONMENT*

EXHIBIT B

RATE AND METHOD OF APPORTIONMENT OF
SPECIAL TAX
FOR COMMUNITY FACILITIES DISTRICT NO. 87-5E
OF THE COUNTY OF ORANGE
(RANCHO SANTA MARGARITA)

A Special Tax applicable to each Assessor's Parcel in Community Facilities District No. 87-5E (herein "CFD No. 87-5E") shall be levied and collected according to the tax liability determined by the Board of Supervisors of the County of Orange acting in its capacity as the legislative body of CFD No. 87-5E (herein the "Board") through the application of the appropriate amount or rate for "Developed Property" or "Undeveloped Property", as described below. All of the property in CFD No. 87-5E, unless exempted by law or by the provisions of Section E below, shall be taxed for the purposes, to the extent and in the manner herein provided.

A. Definitions.

The terms hereinafter set forth have the following meanings:

"Base Maximum Special Tax" means an amount equal to \$0.25 per square foot applicable to each Developed Property.

"Condominium" means a unit meeting the statutory definition of a condominium contained in Civil Code Section 1351.

"Developed Property" means all Assessor's Parcels in CFD No. 87-5E for which a building permit has been issued as of March 1 of the preceding Fiscal Year.

"Fiscal Year" means the period starting on July 1 and ending the following June 30.

"Maximum Special Tax" means the maximum Special Tax, determined in accordance with Section C, that can be levied by the Board in any Fiscal Year for each class of Developed Property and for Undeveloped Property, as applicable.

"Taxable Property" is all of the area within the boundaries of CFD No. 87-5E which is not exempt from the Special Tax pursuant to law or Section E below.

"Townhome" means an attached for-sale residential unit.

"Undeveloped Property" means all Taxable Property in CFD No. 87-5E not classified as Developed Property.

B. Assignment to Land Use Class.

On July 1 of each year, all Taxable Property within CFD No. 87-5E shall be categorized either as a Developed Property or an Undeveloped Property and shall be subject to tax in accordance with the rate and method of apportionment determined pursuant to Sections C and D below.

For purposes of determining the applicable Maximum Special Tax pursuant to Section C, Developed Property shall be assigned to one of the classes designated in Table 1 below. Developed Property shall be assigned to Classes 1 through 11 based upon the square footage for the improvements to be constructed on an Assessor's Parcel as set forth on the most recent building permit issued for such property. The square footage of a structure assigned to Classes 1 through 11 shall be calculated by measuring the internal living space of each unit located within the Assessor's Parcel, exclusive of garages or other structures which are not used as living spaces. Commercial and industrial property shall be assigned to Class 12. The square footage of a commercial or industrial building assigned to Class 12 shall be computed from the gross square footage for the building as reflected in the building plans upon which the building permit was issued.

C. Maximum Special Tax Rate.

1. Developed Property.

The Maximum Special Tax for an Assessor's Parcel classified as Developed Property in Classes 1 through 12 shall be the greater of (i) the amount derived by multiplying the square footage of such Assessor's Parcel times the Base Maximum Special Tax or (ii) the amount determined by reference to Table 1. For purposes of this Section C, the acreage or square footage of an Assessor's Parcel shall be determined by reference to the most current parcel map or other subdivision tract map recorded with the Office of the County Recorder for Orange County.

2. Undeveloped Property.

The Maximum Special Tax for Undeveloped Property shall be \$11,300 per acre.

In making the computations set forth in this Section C and in determining the Maximum Special Tax which may be levied in any Fiscal Year, on July 1, 1989 and on each July 1 thereafter, the Base Maximum Special Tax and the Maximum Special Tax for Developed Property and Undeveloped Property shall be increased by an amount equal to 3.5% of the amount in effect for the previous Fiscal Year.

TABLE 1

Maximum Special Taxes on Property
in Community Facilities District No. 87-5E
(Fiscal Year 1988-89) Per Unit (Residential) and
Per Square Foot (Commercial and Industrial)

<u>Class</u>	<u>Land Use</u>	<u>Square Footage</u>	<u>Special Tax Rate for Fiscal Year 1988-89</u>
1	Single Family Detached	More than 2,700 sq.ft.	\$1,611 per unit
2	Single Family Detached	2,400 to 2,699 sq.ft.	\$1,388 per unit
3	Single Family Detached	1,700 to 2,399 sq.ft.	\$1,140 per unit
4	Single Family Detached	Less than 1,700 sq.ft.	\$868 per unit
5	Townhomes	More than 1,650 sq.ft.	\$843 per unit
6	Townhomes	1,350 to 1,649 sq.ft.	\$818 per unit
7	Townhomes	Less than 1,350 sq.ft.	\$694 per unit
8	Condominiums	More than 1,200 sq.ft.	\$670 per unit
9	Condominiums	850 to 1,199 sq.ft.	\$496 per unit
10	Condominiums	Less than 850 sq.ft.	\$397 per unit
11	Apartments		\$392 per unit
12	Commercial/ Industrial		\$0.41 per sq.ft. or \$5,260 per acre, whichever is greater

D. Method of Apportionment of the Special Tax to Developed Property and Undeveloped Property.

Starting in Fiscal Year 1988-89 and for each following Fiscal Year, the Board shall determine the amount of money to be collected from Taxable Property in CFD No. 87-5E in that Fiscal Year. Such amount shall include the sums necessary to pay for current debt service on indebtedness of CFD No. 87-5E, to create or replenish reserve funds determined necessary by CFD No. 87-5E, and to pay for administrative and construction expenses and any services to be paid from Special Tax proceeds. The Board shall levy the Special Tax as follows until the amount of the levy equals the amount to be collected:

First: The Special Tax shall be levied on Developed Property and Undeveloped Property (exclusive of Undeveloped Property owned by or offered for dedication to a public agency or owned by a church, a public utility for use as an unmanned facility, or by a homeowner's association, or open space being used as a golf course) in equal percentages up to the following rates: (1) for Developed Property, 87% of the applicable rate for each class for such Fiscal Year, determined by reference to Table 1, and (2) for Undeveloped Property, \$863 per acre;

Second: If additional moneys are needed after the first step has been completed, the Special Tax shall be levied proportionately on each parcel of Undeveloped Property (exclusive of Undeveloped Property owned by or offered for dedication to a public agency or owned by a church, a public utility for use as an unmanned facility, or by a homeowner's association, or open space being used as a golf course) up to \$9,831 per acre;

Third: If additional moneys are needed after the first two steps have been completed, then the levy of the Special Tax on Developed Property and Undeveloped Property (exclusive of Undeveloped Property owned by or offered for dedication to a public agency or owned by a church, a public utility for use as an unmanned facility, or by a homeowner's association, or open space being used as a golf course) shall be increased in equal percentages above the rates levied pursuant to the first two steps above, up to the following rates: (1) for Developed Property, up to 100% of the applicable rate for each class for such Fiscal Year, determined by reference to Table 1, and (2) for Undeveloped Property, up to \$11,300 per acre;

Fourth: If additional moneys are needed after the first three steps have been completed, then the levy of the Special Tax on each Assessor's Parcel of Developed Property whose Maximum Special Tax is determined through the application

of the Base Maximum Special Tax shall be increased up to the Maximum Special Tax for each such Assessor's Parcel by increasing the applicable rate for each class for such Fiscal Year determined by reference to Table 1 in equal percentages above the rates levied pursuant to step three above;

Fifth: If additional moneys are needed after the first four steps have been completed, then the Special Tax shall be levied proportionately on each parcel of Undeveloped Property offered for dedication to a public agency or owned by a church or by a homeowner's association, or open space being used as a golf course which has not been exempted from the Special Tax pursuant to Section E, up to the Maximum Special Tax for Undeveloped Property; and

Sixth: If additional moneys are needed after the first five steps have been completed, then the Special Tax shall be levied proportionately on each parcel of Undeveloped Property conveyed to a public agency which has not been exempted from the Special Tax pursuant to Section E, up to the Maximum Special Tax for Undeveloped Property.

E. Limitations.

The Board shall not impose any Special Tax on up to 99 acres of land conveyed or offered for dedication to a public agency or owned by a church, a public utility for use as an unmanned facility or by a homeowner's association, or open space being used as a golf course. If the total number of acres of land conveyed or offered for dedication to a public agency or owned by a church, a public utility for use as an unmanned facility or by a homeowner's association, or open space being used as a golf course exceeds 99 acres, then the exempt acres shall be determined in the following order of priority, with the property within each category receiving priority based on the date that it entered such category: (1) property owned by a public agency for public right of way or property which is an unmanned utility property, (2) other property owned by a public agency, (3) property offered for dedication to a public agency, and (4) property owned by a church or a homeowner's association or which is open space used as a golf course. The acres exceeding such total of 99 shall be taxed as Undeveloped Property to the extent set forth in steps five and six in Section D above; provided, however, that in no event shall the Board impose a Special Tax on land which is a public right of way or which is an unmanned utility property or a property encumbered with public or utility easements making impractical its utilization for other than the purpose set forth in the easement.

APPENDIX C

SPECIAL TAX ROLL

**COMMUNITY FACILITIES DISTRICT NO. 87-5E
OF THE COUNTY OF ORANGE
(RANCHO SANTA MARGARITA)**

FISCAL YEAR 2012-13 SPECIAL TAX LEVY

9:30:57AM

ASSESSOR PARCEL NUMBER	TRACT	LOT	UNIT	TAX CLASS	NBR UNITS	PERMIT DATE	BLDG SQ FT	PARCEL ACRES	TAXABLE ACRES	MAXIMUM	STEP 1 SPECIAL TAX	STEP 2 SPECIAL TAX	2012-13 SPECIAL TAX
										TABLE 1/UNDEV SPECIAL TAX			
814-121-01	90316			12	0		59,316	4.9590	4.9590	\$59,559.12	\$13,932.82	\$0.00	\$13,932.82
814-121-02	90316			12	0		11,399	0.4870	0.4870	\$10,671.34	\$2,496.37	\$0.00	\$2,496.37
814-121-03	90316			0	0		0	0.4670	0.4670	\$12,049.35	\$108.37	\$0.00	\$108.37
814-121-04	90316			12	0		10,037	0.3940	0.3940	\$9,396.28	\$2,198.10	\$0.00	\$2,198.10
814-121-05	90316	10		12	0		3,287	0.1630	0.1630	\$3,077.17	\$719.85	\$0.00	\$719.85
814-121-06	90316			0	0		0	3.8000	3.8000	\$98,046.13	\$881.79	\$0.00	\$881.79
814-121-07	90316	11		12	0		42,380	1.7280	1.7280	\$39,674.66	\$9,281.19	\$0.00	\$9,281.19
814-121-08	90316			12	0		7,126	0.3100	0.3100	\$6,671.11	\$1,560.59	\$0.00	\$1,560.59
814-121-09	90316	6		12	0		19,517	0.7190	0.7190	\$18,271.13	\$4,274.21	\$0.00	\$4,274.21
814-121-10	90316	4		12	0		6,242	0.3400	0.3400	\$5,843.54	\$1,366.99	\$0.00	\$1,366.99
814-121-11	90316			12	0		3,348	0.3070	0.3070	\$3,687.16	\$862.55	\$0.00	\$862.55
814-121-12	90316			12	0		3,216	0.1520	0.1520	\$3,010.71	\$704.30	\$0.00	\$704.30
814-121-13	90316	8		12	1	10/11/04	7,050	0.6530	0.6530	\$7,842.73	\$1,834.67	\$0.00	\$1,834.67
814-121-14	90316			EX	0		0	0.1430	0.0000	\$0.00	\$0.00	\$0.00	\$0.00
814-121-15	90316			EX	0		0	0.1120	0.0000	\$0.00	\$0.00	\$0.00	\$0.00
814-121-16	90316			EX	0		0	0.1350	0.0000	\$0.00	\$0.00	\$0.00	\$0.00
814-121-17	90316			EX	0		0	0.0720	0.0000	\$0.00	\$0.00	\$0.00	\$0.00
814-121-18	90316			EX	0		0	0.0800	0.0000	\$0.00	\$0.00	\$0.00	\$0.00
814-121-19	90316			EX	0		0	0.2880	0.0000	\$0.00	\$0.00	\$0.00	\$0.00
814-132-03	14899	3		11	76	6/24/94	64,212	2.9900	2.9900	\$68,024.92	\$15,913.24	\$0.00	\$15,913.24
814-132-04	14899	6		EX	0		0	0.2550	0.0000	\$0.00	\$0.00	\$0.00	\$0.00
814-132-05	14899	5		11	100	6/24/94	82,662	3.1890	3.1890	\$89,506.48	\$20,938.48	\$0.00	\$20,938.48
814-132-06	14899	4		11	52	6/24/94	43,190	1.7090	1.7090	\$46,543.37	\$10,888.01	\$0.00	\$10,888.01
814-132-07	14899	1		EX	0		0	0.7440	0.0000	\$0.00	\$0.00	\$0.00	\$0.00
814-132-08	14899	2		11	88	6/24/94	74,080	3.3390	3.3390	\$78,765.70	\$18,425.86	\$0.00	\$18,425.86
814-132-09	14899	C		EX	0		0	0.1480	0.0000	\$0.00	\$0.00	\$0.00	\$0.00
814-132-10	14899	A		EX	0		0	0.7150	0.0000	\$0.00	\$0.00	\$0.00	\$0.00
814-132-11	14899	B		EX	0		0	0.3890	0.0000	\$0.00	\$0.00	\$0.00	\$0.00
814-133-03	15263	3		EX	0		0	0.6650	0.0000	\$0.00	\$0.00	\$0.00	\$0.00
814-133-06	15263	C		EX	0		0	0.0620	0.0000	\$0.00	\$0.00	\$0.00	\$0.00
814-133-07	15263	B		EX	0		0	0.0100	0.0000	\$0.00	\$0.00	\$0.00	\$0.00
814-133-08	15263	A		EX	0		0	0.4400	0.0000	\$0.00	\$0.00	\$0.00	\$0.00
814-133-09	15263	1,2		11	166	3/13/97	135,320	4.6210	4.6210	\$148,580.75	\$34,757.87	\$0.00	\$34,757.87
814-133-12	14595	13		EX	0		0	0.3330	0.0000	\$0.00	\$0.00	\$0.00	\$0.00
814-143-01	15282	25		3	1	7/30/97	1,907	0.1286	0.1286	\$2,602.99	\$608.93	\$0.00	\$608.93

**COMMUNITY FACILITIES DISTRICT NO. 87-5E
OF THE COUNTY OF ORANGE
(RANCHO SANTA MARGARITA)**

FISCAL YEAR 2012-13 SPECIAL TAX LEVY

9:30:57AM

ASSESSOR PARCEL NUMBER	TRACT	LOT	UNIT	TAX CLASS	NBR UNITS	PERMIT DATE	BLDG SQ FT	PARCEL ACRES	TAXABLE ACRES	MAXIMUM	STEP 1 SPECIAL TAX	STEP 2 SPECIAL TAX	2012-13 SPECIAL TAX
										TABLE 1/UNDEV SPECIAL TAX			
814-143-02	15282	26		4	1	7/30/97	1,454	0.0835	0.0835	\$1,981.93	\$463.64	\$0.00	\$463.64
814-143-07	15282	29		4	1	9/4/97	1,454	0.0767	0.0767	\$1,981.93	\$463.64	\$0.00	\$463.64
814-143-08	15282	30		3	1	9/4/97	1,907	0.0761	0.0761	\$2,602.99	\$608.93	\$0.00	\$608.93
814-143-09	15282	31		4	1	9/4/97	1,454	0.0791	0.0791	\$1,981.93	\$463.64	\$0.00	\$463.64
814-143-10	15282	32		3	1	9/4/97	1,907	0.0865	0.0865	\$2,602.99	\$608.93	\$0.00	\$608.93
814-143-11	15282	C		EX	0		0	0.0270	0.0000	\$0.00	\$0.00	\$0.00	\$0.00
814-143-12	15282	33		3	1	9/4/97	1,907	0.1186	0.1186	\$2,602.99	\$608.93	\$0.00	\$608.93
814-143-13	15282	34		3	1	9/4/97	1,846	0.1270	0.1270	\$2,602.99	\$608.93	\$0.00	\$608.93
814-143-14	15282	35		3	1	9/4/97	2,047	0.1370	0.1370	\$2,602.99	\$608.93	\$0.00	\$608.93
814-143-15	15282	36		4	1	9/4/97	1,454	0.0910	0.0910	\$1,981.93	\$463.64	\$0.00	\$463.64
814-143-16	15282	37		4	1	9/4/97	1,650	0.1150	0.1150	\$1,981.93	\$463.64	\$0.00	\$463.64
814-143-17	15282	1		3	1	9/4/97	1,907	0.1610	0.1610	\$2,602.99	\$608.93	\$0.00	\$608.93
814-143-18	15282	2		3	1	11/8/96	2,061	0.1150	0.1150	\$2,602.99	\$608.93	\$0.00	\$608.93
814-143-19	15282	3		4	1	11/8/96	1,650	0.0839	0.0839	\$1,981.93	\$463.64	\$0.00	\$463.64
814-143-20	15282	4		4	1	11/8/96	1,454	0.0879	0.0879	\$1,981.93	\$463.64	\$0.00	\$463.64
814-143-21	15282	5		4	1	1/7/98	1,650	0.0934	0.0934	\$1,981.93	\$463.64	\$0.00	\$463.64
814-143-22	15282	6		4	1	1/7/98	1,454	0.0923	0.0923	\$1,981.93	\$463.64	\$0.00	\$463.64
814-143-23	15282	A		EX	0		0	0.1220	0.0000	\$0.00	\$0.00	\$0.00	\$0.00
814-143-24	15282	7		3	1	12/19/96	1,827	0.0905	0.0905	\$2,602.99	\$608.93	\$0.00	\$608.93
814-143-25	15282	8		3	1	12/19/96	1,907	0.0791	0.0791	\$2,602.99	\$608.93	\$0.00	\$608.93
814-143-26	15282	9		4	1	12/19/96	1,454	0.0746	0.0746	\$1,981.93	\$463.64	\$0.00	\$463.64
814-143-27	15282	10		3	1	12/19/96	1,858	0.0746	0.0746	\$2,602.99	\$608.93	\$0.00	\$608.93
814-143-28	15282	11		3	1	12/19/96	1,907	0.0746	0.0746	\$2,602.99	\$608.93	\$0.00	\$608.93
814-143-29	15282	12		4	1	12/19/96	1,454	0.0805	0.0805	\$1,981.93	\$463.64	\$0.00	\$463.64
814-143-30	15282	13		3	1	12/19/96	1,907	0.1294	0.1294	\$2,602.99	\$608.93	\$0.00	\$608.93
814-143-31	15282	14		4	1	12/19/96	1,650	0.0767	0.0767	\$1,981.93	\$463.64	\$0.00	\$463.64
814-143-32	15282	15		3	1	12/19/96	2,032	0.0804	0.0804	\$2,602.99	\$608.93	\$0.00	\$608.93
814-143-33	15282	16		3	1	12/19/96	1,907	0.1064	0.1064	\$2,602.99	\$608.93	\$0.00	\$608.93
814-143-34	15282	17		4	1	7/30/97	1,650	0.0775	0.0775	\$1,981.93	\$463.64	\$0.00	\$463.64
814-143-35	15282	18		3	1	7/30/97	1,907	0.0815	0.0815	\$2,602.99	\$608.93	\$0.00	\$608.93
814-143-36	15282	19		4	1	7/30/97	1,650	0.1212	0.1212	\$1,981.93	\$463.64	\$0.00	\$463.64
814-143-37	15282	20		4	1	7/30/97	1,454	0.0772	0.0772	\$1,981.93	\$463.64	\$0.00	\$463.64
814-143-38	15282	21		3	1	7/30/97	1,907	0.0768	0.0768	\$2,602.99	\$608.93	\$0.00	\$608.93
814-143-39	15282	22		4	1	7/30/97	1,650	0.0768	0.0768	\$1,981.93	\$463.64	\$0.00	\$463.64
814-143-40	15282	23		3	1	7/30/97	2,027	0.0768	0.0768	\$2,602.99	\$608.93	\$0.00	\$608.93

**COMMUNITY FACILITIES DISTRICT NO. 87-5E
OF THE COUNTY OF ORANGE
(RANCHO SANTA MARGARITA)**

FISCAL YEAR 2012-13 SPECIAL TAX LEVY

9:30:57AM

ASSESSOR PARCEL NUMBER	TRACT	LOT	UNIT	TAX CLASS	NBR UNITS	PERMIT DATE	BLDG SQ FT	PARCEL ACRES	TAXABLE ACRES	MAXIMUM	STEP 1	STEP 2	2012-13
										TABLE 1/UNDEV SPECIAL TAX	SPECIAL TAX	SPECIAL TAX	SPECIAL TAX
814-143-41	15282	24		3	1	7/30/97	1,832	0.0811	0.0811	\$2,602.99	\$608.93	\$0.00	\$608.93
814-143-42	15282	B		EX	0		0	0.3810	0.0000	\$0.00	\$0.00	\$0.00	\$0.00
814-143-43	15282	27		3	1	9/4/97	1,907	0.0825	0.0825	\$2,602.99	\$608.93	\$0.00	\$608.93
814-143-44	15282	28		3	1	9/4/97	1,820	0.0854	0.0854	\$2,602.99	\$608.93	\$0.00	\$608.93
814-144-01	15282	61		4	1	7/30/97	1,454	0.0825	0.0825	\$1,981.93	\$463.64	\$0.00	\$463.64
814-144-02	15282	60		4	1	9/4/97	1,650	0.0843	0.0843	\$1,981.93	\$463.64	\$0.00	\$463.64
814-144-03	15282	59		3	1	9/4/97	1,907	0.1059	0.1059	\$2,602.99	\$608.93	\$0.00	\$608.93
814-144-04	15282	58		3	1	9/4/97	1,962	0.0961	0.0961	\$2,602.99	\$608.93	\$0.00	\$608.93
814-144-05	15282	57		3	1	9/4/97	1,907	0.0832	0.0832	\$2,602.99	\$608.93	\$0.00	\$608.93
814-144-06	15282	56		3	1	5/6/97	1,907	0.1296	0.1296	\$2,602.99	\$608.93	\$0.00	\$608.93
814-144-07	15282	71		4	1	5/6/97	1,650	0.0769	0.0769	\$1,981.93	\$463.64	\$0.00	\$463.64
814-144-08	15282	70		3	1	5/6/97	1,907	0.0920	0.0920	\$2,602.99	\$608.93	\$0.00	\$608.93
814-144-09	15282	69		3	1	5/6/97	1,907	0.1035	0.1035	\$2,602.99	\$608.93	\$0.00	\$608.93
814-144-10	15282	68		4	1	5/6/97	1,650	0.1065	0.1065	\$1,981.93	\$463.64	\$0.00	\$463.64
814-144-11	15282	67		4	1	5/6/97	1,454	0.0951	0.0951	\$1,981.93	\$463.64	\$0.00	\$463.64
814-144-12	15282	66		3	1	5/6/97	1,907	0.0768	0.0768	\$2,602.99	\$608.93	\$0.00	\$608.93
814-144-13	15282	65		4	1	5/6/97	1,650	0.1098	0.1098	\$1,981.93	\$463.64	\$0.00	\$463.64
814-144-14	15282	64		3	1	7/30/97	1,907	0.1095	0.1095	\$2,602.99	\$608.93	\$0.00	\$608.93
814-144-15	15282	63		3	1	7/30/97	1,782	0.1097	0.1097	\$2,602.99	\$608.93	\$0.00	\$608.93
814-144-16	15282	62		3	1	7/30/97	2,026	0.1330	0.1330	\$2,602.99	\$608.93	\$0.00	\$608.93
814-145-01	15282	47		4	1	5/6/97	1,454	0.0800	0.0800	\$1,981.93	\$463.64	\$0.00	\$463.64
814-145-02	15282	48		4	1	5/6/97	1,650	0.0755	0.0755	\$1,981.93	\$463.64	\$0.00	\$463.64
814-145-03	15282	49		3	1	5/6/97	2,047	0.0746	0.0746	\$2,602.99	\$608.93	\$0.00	\$608.93
814-145-04	15282	50		4	1	5/6/97	1,650	0.0746	0.0746	\$1,981.93	\$463.64	\$0.00	\$463.64
814-145-05	15282	51		4	1	5/6/97	1,584	0.0746	0.0746	\$1,981.93	\$463.64	\$0.00	\$463.64
814-145-06	15282	52		3	1	5/6/97	2,115	0.0746	0.0746	\$2,602.99	\$608.93	\$0.00	\$608.93
814-145-07	15282	53		4	1	5/6/97	1,650	0.0761	0.0761	\$1,981.93	\$463.64	\$0.00	\$463.64
814-145-08	15282	54		3	1	5/6/97	1,907	0.0799	0.0799	\$2,602.99	\$608.93	\$0.00	\$608.93
814-145-09	15282	55		3	1	5/6/97	1,832	0.1040	0.1040	\$2,602.99	\$608.93	\$0.00	\$608.93
814-145-10	15282	38		3	1	1/7/98	1,858	0.1248	0.1248	\$2,602.99	\$608.93	\$0.00	\$608.93
814-145-11	15282	39		4	1	1/7/98	1,454	0.0774	0.0774	\$1,981.93	\$463.64	\$0.00	\$463.64
814-145-12	15282	40		3	1	1/7/98	1,907	0.0772	0.0772	\$2,602.99	\$608.93	\$0.00	\$608.93
814-145-13	15282	41		3	1	1/7/98	1,907	0.0799	0.0799	\$2,602.99	\$608.93	\$0.00	\$608.93
814-145-14	15282	42		4	1	12/19/96	1,454	0.0801	0.0801	\$1,981.93	\$463.64	\$0.00	\$463.64
814-145-15	15282	43		4	1	12/19/96	1,650	0.0792	0.0792	\$1,981.93	\$463.64	\$0.00	\$463.64

**COMMUNITY FACILITIES DISTRICT NO. 87-5E
OF THE COUNTY OF ORANGE
(RANCHO SANTA MARGARITA)**

FISCAL YEAR 2012-13 SPECIAL TAX LEVY

9:30:57AM

ASSESSOR PARCEL NUMBER	TRACT	LOT	UNIT	TAX CLASS	NBR UNITS	PERMIT DATE	BLDG SQ FT	PARCEL ACRES	TAXABLE ACRES	MAXIMUM	STEP 1 SPECIAL TAX	STEP 2 SPECIAL TAX	2012-13 SPECIAL TAX
										TABLE 1/UNDEV SPECIAL TAX			
814-145-16	15282	44		3	1	12/19/96	1,907	0.0792	0.0792	\$2,602.99	\$608.93	\$0.00	\$608.93
814-145-17	15282	45		3	1	12/19/96	1,907	0.0792	0.0792	\$2,602.99	\$608.93	\$0.00	\$608.93
814-145-18	15282	46		4	1	12/19/96	1,650	0.1112	0.1112	\$1,981.93	\$463.64	\$0.00	\$463.64
814-152-01	14770	POR 1	1	12	1	3/3/99	15,049	1.5660	1.5660	\$18,808.14	\$4,399.84	\$0.00	\$4,399.84
814-152-02	14770	POR 1		0	0		0	1.1170	1.1170	\$28,820.40	\$259.20	\$0.00	\$259.20
814-152-03	14770	POR 2		0	0		0	0.4740	0.4740	\$12,229.96	\$109.99	\$0.00	\$109.99
814-152-04	14770	POR 2		12	0	2/18/94	133,672	8.2670	8.2670	\$125,139.01	\$29,274.09	\$0.00	\$29,274.09
814-152-05	14770	3		0	0		0	0.2590	0.2590	\$6,682.62	\$60.10	\$0.00	\$60.10
814-152-06	14770	E		EX	0		0	0.0160	0.0000	\$0.00	\$0.00	\$0.00	\$0.00
814-152-07	14770	G		EX	0		0	0.0980	0.0000	\$0.00	\$0.00	\$0.00	\$0.00
814-152-08	14770	D		EX	0		0	0.0790	0.0000	\$0.00	\$0.00	\$0.00	\$0.00
814-152-09	14770	C		EX	0		0	0.3620	0.0000	\$0.00	\$0.00	\$0.00	\$0.00
814-152-10	14770	POR B		EX	0		0	0.1030	0.0000	\$0.00	\$0.00	\$0.00	\$0.00
814-152-11	14770	POR B		EX	0		0	0.0720	0.0000	\$0.00	\$0.00	\$0.00	\$0.00
814-152-12	14770	A		EX	0		0	0.3070	0.0000	\$0.00	\$0.00	\$0.00	\$0.00
814-152-13	14770	F		EX	0		0	0.0050	0.0000	\$0.00	\$0.00	\$0.00	\$0.00
814-152-16	14771	A		EX	0		0	0.3780	0.0000	\$0.00	\$0.00	\$0.00	\$0.00
814-152-17	93112	A		EX	0		0	0.2500	0.0000	\$0.00	\$0.00	\$0.00	\$0.00
814-152-18	93112	2		12	1	3/23/95	4,260	0.6600	0.6600	\$7,926.80	\$1,854.34	\$0.00	\$1,854.34
814-152-19	93112	1		12	1	3/10/95	21,815	1.3970	1.3970	\$20,422.43	\$4,777.47	\$0.00	\$4,777.47
814-152-20	93112	POR 1		EX	0		0	0.0000	0.0000	\$0.00	\$0.00	\$0.00	\$0.00
814-152-21	93112	3		12	1	10/18/96	25,024	0.9830	0.9830	\$23,426.58	\$5,480.24	\$0.00	\$5,480.24
814-152-22	93112	4		12	1	3/22/95	12,834	0.6710	0.6710	\$12,014.74	\$2,810.64	\$0.00	\$2,810.64
814-152-23	93112	8		0	0		0	4.6610	4.6610	\$120,261.31	\$1,081.59	\$0.00	\$1,081.59
814-152-24	93112	7		12	3	3/22/95	49,559	2.1510	2.1510	\$46,395.39	\$10,853.39	\$0.00	\$10,853.39
814-152-25	93112	6		12	1	3/22/95	18,155	0.9540	0.9540	\$16,996.07	\$3,975.93	\$0.00	\$3,975.93
814-152-26	93112	5		12	1	1/10/96	59,340	1.1010	1.1010	\$55,552.01	\$12,995.42	\$0.00	\$12,995.42
814-152-27	93112	9		0	0		0	0.7300	0.7300	\$18,835.18	\$169.40	\$0.00	\$169.40
814-152-28	93112	10		0	0		0	0.8630	0.8630	\$22,266.79	\$200.26	\$0.00	\$200.26
814-152-29	93112	C		EX	0		0	0.1940	0.0000	\$0.00	\$0.00	\$0.00	\$0.00
814-152-30	93112	B		EX	0		0	0.0930	0.0000	\$0.00	\$0.00	\$0.00	\$0.00
814-153-01	14897	A		EX	0		0	0.2080	0.0000	\$0.00	\$0.00	\$0.00	\$0.00
814-153-02	14897	E		EX	0		0	0.0520	0.0000	\$0.00	\$0.00	\$0.00	\$0.00
814-153-03	14897	B		EX	0		0	0.1740	0.0000	\$0.00	\$0.00	\$0.00	\$0.00
814-153-04	14897	4		12	1	9/22/94	6,400	1.0390	1.0390	\$12,478.71	\$2,919.18	\$0.00	\$2,919.18

**COMMUNITY FACILITIES DISTRICT NO. 87-5E
OF THE COUNTY OF ORANGE
(RANCHO SANTA MARGARITA)**

FISCAL YEAR 2012-13 SPECIAL TAX LEVY

9:30:57AM

ASSESSOR PARCEL NUMBER	TRACT	LOT	UNIT	TAX CLASS	NBR UNITS	PERMIT DATE	BLDG SQ FT	PARCEL ACRES	TAXABLE ACRES	MAXIMUM	STEP 1	STEP 2	2012-13
										TABLE 1/UNDEV SPECIAL TAX	SPECIAL TAX	SPECIAL TAX	SPECIAL TAX
814-153-05	14897	1		12	1	5/31/11	7,753	1.0100	1.0100	\$12,130.41	\$2,837.70	\$0.00	\$2,837.70
814-153-06	14897	2		12	1	8/2/96	3,765	0.4130	0.4130	\$4,960.26	\$1,160.37	\$0.00	\$1,160.37
814-153-07	14897	POR 3	2	0	0		0	0.6700	0.6700	\$17,287.08	\$155.47	\$0.00	\$155.47
814-153-08	14897	POR 5	1	11	42	12/7/04	45,286	1.5630	1.5630	\$37,592.72	\$8,794.16	\$0.00	\$8,794.16
814-153-09	14897	F		EX	0		0	0.0090	0.0000	\$0.00	\$0.00	\$0.00	\$0.00
814-153-10	14897	C		EX	0		0	0.1990	0.0000	\$0.00	\$0.00	\$0.00	\$0.00
814-153-11	14897	POR 5	2	11	27	12/7/04	29,112	0.2930	0.2930	\$24,166.75	\$5,653.39	\$0.00	\$5,653.39
814-153-12	14897	POR 5	3	11	9	12/7/04	9,704	0.3050	0.3050	\$8,055.58	\$1,884.46	\$0.00	\$1,884.46
814-153-13	14897	POR 5	4	11	37	12/7/04	39,895	0.9370	0.9370	\$33,117.40	\$7,747.24	\$0.00	\$7,747.24
814-153-14	14897	POR 3	1	12	1	9/25/00	25,224	1.5620	1.5620	\$23,613.82	\$5,524.04	\$0.00	\$5,524.04
814-153-15	14897	D		EX	0		0	0.0080	0.0000	\$0.00	\$0.00	\$0.00	\$0.00
814-154-04	13423	por 3	2	12	1	12/10/98	17,175	1.0900	1.0900	\$16,078.63	\$3,761.31	\$0.00	\$3,761.31
814-154-05	13423	por 4		EX	0		0	1.9200	0.0000	\$0.00	\$0.00	\$0.00	\$0.00
814-154-06	13423	por 4		EX	0		0	2.0830	0.0000	\$0.00	\$0.00	\$0.00	\$0.00
814-154-07	13423	5		EX	0		0	4.5220	0.0000	\$0.00	\$0.00	\$0.00	\$0.00
814-154-08	13423	6		EX	0		0	1.8220	0.0000	\$0.00	\$0.00	\$0.00	\$0.00
814-154-09	13423	8		EX	0		0	1.3650	0.0000	\$0.00	\$0.00	\$0.00	\$0.00
814-154-10	13423	9		EX	0		0	0.4610	0.0000	\$0.00	\$0.00	\$0.00	\$0.00
814-154-11	13423	7		EX	0		0	0.3560	0.0000	\$0.00	\$0.00	\$0.00	\$0.00
814-154-12	13423	1,2,3		12	1	12/10/98	157,501	7.3300	7.3300	\$147,446.87	\$34,492.62	\$0.00	\$34,492.62
814-161-02	14862	POR E		EX	0		0	0.0545	0.0000	\$0.00	\$0.00	\$0.00	\$0.00
814-161-04	14862	POR E		EX	0		0	0.0000	0.0000	\$0.00	\$0.00	\$0.00	\$0.00
814-161-08	14862	POR 13		EX	0		0	0.0260	0.0000	\$0.00	\$0.00	\$0.00	\$0.00
814-161-10	14862	POR 13		EX	0		0	0.1590	0.0000	\$0.00	\$0.00	\$0.00	\$0.00
814-161-14	14862	POR C		EX	0		0	0.1640	0.0000	\$0.00	\$0.00	\$0.00	\$0.00
814-161-16	14862	POR C		EX	0		0	0.0130	0.0000	\$0.00	\$0.00	\$0.00	\$0.00
814-161-19	14862	POR B		EX	0		0	0.3150	0.0000	\$0.00	\$0.00	\$0.00	\$0.00
814-161-20	14862	POR A		EX	0		0	0.0000	0.0000	\$0.00	\$0.00	\$0.00	\$0.00
814-161-21	14862	H		EX	0		0	0.1190	0.0000	\$0.00	\$0.00	\$0.00	\$0.00
814-161-22	14862	POR A		EX	0		0	0.0000	0.0000	\$0.00	\$0.00	\$0.00	\$0.00
814-161-23	14862	F		EX	0		0	0.0400	0.0000	\$0.00	\$0.00	\$0.00	\$0.00
814-161-32	14862	D		EX	0		0	0.1380	0.0000	\$0.00	\$0.00	\$0.00	\$0.00
814-161-35	14862	POR B		EX	0		0	0.2500	0.0000	\$0.00	\$0.00	\$0.00	\$0.00
814-161-37	14862	POR G		EX	0		0	0.1890	0.0000	\$0.00	\$0.00	\$0.00	\$0.00
814-161-38	14862	POR G		EX	0		0	0.1040	0.0000	\$0.00	\$0.00	\$0.00	\$0.00

**COMMUNITY FACILITIES DISTRICT NO. 87-5E
OF THE COUNTY OF ORANGE
(RANCHO SANTA MARGARITA)**

FISCAL YEAR 2012-13 SPECIAL TAX LEVY

9:30:57AM

ASSESSOR PARCEL NUMBER	TRACT	LOT	UNIT	TAX CLASS	NBR UNITS	PERMIT DATE	BLDG SQ FT	PARCEL ACRES	TAXABLE ACRES	MAXIMUM	STEP 1	STEP 2	2012-13
										TABLE 1/UNDEV SPECIAL TAX	SPECIAL TAX	SPECIAL TAX	SPECIAL TAX
814-161-39	14862	1-12, 14		EX	0		0	0.0000	0.0000	\$0.00	\$0.00	\$0.00	\$0.00
814-161-40	14862	J		EX	0		0	0.2170	0.0000	\$0.00	\$0.00	\$0.00	\$0.00
814-161-49	15306	A		EX	0		0	0.3280	0.0000	\$0.00	\$0.00	\$0.00	\$0.00
814-161-50	15306	B		EX	0		0	0.1390	0.0000	\$0.00	\$0.00	\$0.00	\$0.00
814-161-51	15306	B		EX	0		0	0.0440	0.0000	\$0.00	\$0.00	\$0.00	\$0.00
814-171-01	14898	C		EX	0		0	0.0350	0.0000	\$0.00	\$0.00	\$0.00	\$0.00
814-171-02	14898	D		EX	0		0	0.0100	0.0000	\$0.00	\$0.00	\$0.00	\$0.00
814-171-03	14898	E		EX	0		0	0.0180	0.0000	\$0.00	\$0.00	\$0.00	\$0.00
814-171-04	14898	2		0	0		0	0.2750	0.2750	\$7,095.44	\$63.81	\$0.00	\$63.81
814-171-05	14898	3		12	1	3/28/00	10,197	1.2880	1.2880	\$15,469.28	\$3,618.77	\$0.00	\$3,618.77
814-171-06	14898	F		EX	0		0	0.2090	0.0000	\$0.00	\$0.00	\$0.00	\$0.00
814-171-07	14898	1		12	1	7/25/94	22,145	1.7080	1.7080	\$20,731.37	\$4,849.74	\$0.00	\$4,849.74
814-171-08	14898	A		EX	0		0	0.0230	0.0000	\$0.00	\$0.00	\$0.00	\$0.00
814-171-09	14898	B		EX	0		0	0.0350	0.0000	\$0.00	\$0.00	\$0.00	\$0.00
814-171-22	14910	E		EX	0		0	0.0310	0.0000	\$0.00	\$0.00	\$0.00	\$0.00
814-171-23	14910	C		EX	0		0	0.0430	0.0000	\$0.00	\$0.00	\$0.00	\$0.00
814-171-24	14910	F		EX	0		0	0.0270	0.0000	\$0.00	\$0.00	\$0.00	\$0.00
814-171-25	14910	I		EX	0		0	0.0440	0.0000	\$0.00	\$0.00	\$0.00	\$0.00
814-171-26	14910	D		EX	0		0	0.0910	0.0000	\$0.00	\$0.00	\$0.00	\$0.00
814-171-27	14910	H		EX	0		0	0.0960	0.0000	\$0.00	\$0.00	\$0.00	\$0.00
814-171-28	14910	G		EX	0		0	0.0120	0.0000	\$0.00	\$0.00	\$0.00	\$0.00
814-171-29	14910	A		EX	0		0	0.3640	0.0000	\$0.00	\$0.00	\$0.00	\$0.00
814-171-30	14910	B		EX	0		0	0.6500	0.0000	\$0.00	\$0.00	\$0.00	\$0.00
814-171-31	14910	1 through		EX	0		0	0.0610	0.0000	\$0.00	\$0.00	\$0.00	\$0.00
814-172-02	15231	1		12	0	8/4/97	10,345	1.2930	1.2930	\$15,529.53	\$3,632.86	\$0.00	\$3,632.86
814-172-03	15231	3		EX	0		0	0.3900	0.0000	\$0.00	\$0.00	\$0.00	\$0.00
814-172-04	15231	POR B		EX	0		0	0.0390	0.0000	\$0.00	\$0.00	\$0.00	\$0.00
814-172-09	15231	G		EX	0		0	0.0900	0.0000	\$0.00	\$0.00	\$0.00	\$0.00
814-172-10	14713	4		12	1	4/6/01	5,358	0.7020	0.7020	\$8,431.24	\$1,972.34	\$0.00	\$1,972.34
814-172-11	14713	3/4/2		12	1	8/5/02	98,438	5.5360	5.5360	\$92,154.18	\$21,557.86	\$0.00	\$21,557.86
814-172-12	15231	2		12	1	2/4/02	27,000	2.9830	2.9830	\$35,826.75	\$8,381.04	\$0.00	\$8,381.04
814-172-14	14713	J		EX	0		0	0.3490	0.0000	\$0.00	\$0.00	\$0.00	\$0.00
814-172-16	15231	POR B		EX	0		0	0.0130	0.0000	\$0.00	\$0.00	\$0.00	\$0.00
814-172-17	15231	C/D		EX	0		0	0.0580	0.0000	\$0.00	\$0.00	\$0.00	\$0.00
814-172-19	14713	D		EX	0		0	0.0400	0.0000	\$0.00	\$0.00	\$0.00	\$0.00

**COMMUNITY FACILITIES DISTRICT NO. 87-5E
OF THE COUNTY OF ORANGE
(RANCHO SANTA MARGARITA)**

FISCAL YEAR 2012-13 SPECIAL TAX LEVY

9:30:57AM

ASSESSOR PARCEL NUMBER	TRACT	LOT	UNIT	TAX CLASS	NBR UNITS	PERMIT DATE	BLDG SQ FT	PARCEL ACRES	TAXABLE ACRES	MAXIMUM	STEP 1	STEP 2	2012-13
										TABLE 1/UNDEV SPECIAL TAX			
814-172-20	14713	F		EX	0		0	0.0090	0.0000	\$0.00	\$0.00	\$0.00	\$0.00
814-172-22	14713	H		EX	0		0	0.0530	0.0000	\$0.00	\$0.00	\$0.00	\$0.00
814-172-23	14713	I		EX	0		0	0.0360	0.0000	\$0.00	\$0.00	\$0.00	\$0.00
814-172-24				EX	0		0	1.4050	0.0000	\$0.00	\$0.00	\$0.00	\$0.00
814-172-25	14713	2		12	1	4/6/01	6,727	0.7220	0.7090	\$8,515.31	\$1,992.01	\$0.00	\$1,992.01
814-172-26	14713	2/1		12	4	4/6/01	44,343	4.1390	4.1390	\$49,710.66	\$11,628.94	\$0.00	\$11,628.94
814-172-27	14713	1/2		12	1	12/12/01	21,532	1.3810	1.3803	\$20,157.50	\$4,715.49	\$0.00	\$4,715.49
814-172-28	14713	G		EX	0		0	0.1290	0.0000	\$0.00	\$0.00	\$0.00	\$0.00
814-181-06	15180	46		3	1	4/30/96	1,790	0.0730	0.0730	\$2,602.99	\$608.93	\$0.00	\$608.93
814-181-07	15180	47		4	1	4/30/96	1,477	0.0520	0.0520	\$1,981.93	\$463.64	\$0.00	\$463.64
814-181-08	15180	48		4	1	4/30/96	1,587	0.0530	0.0530	\$1,981.93	\$463.64	\$0.00	\$463.64
814-181-09	15180	49		3	1	4/30/96	1,876	0.0540	0.0540	\$2,602.99	\$608.93	\$0.00	\$608.93
814-181-10	15180	50		4	1	4/30/96	1,587	0.0540	0.0540	\$1,981.93	\$463.64	\$0.00	\$463.64
814-181-11	15180	51		3	1	4/30/96	1,876	0.0550	0.0550	\$2,602.99	\$608.93	\$0.00	\$608.93
814-181-12	15180	52		4	1	4/30/96	1,587	0.0550	0.0550	\$1,981.93	\$463.64	\$0.00	\$463.64
814-181-13	15180	53		4	1	4/30/96	1,477	0.0550	0.0550	\$1,981.93	\$463.64	\$0.00	\$463.64
814-181-14	15180	54		3	1	4/30/96	1,876	0.0780	0.0780	\$2,602.99	\$608.93	\$0.00	\$608.93
814-181-15	15180	1		3	1	11/15/95	1,785	0.0710	0.0710	\$2,602.99	\$608.93	\$0.00	\$608.93
814-181-16	15180	2		3	1	11/15/95	1,876	0.0530	0.0530	\$2,602.99	\$608.93	\$0.00	\$608.93
814-181-17	15180	3		4	1	11/15/95	1,477	0.0530	0.0530	\$1,981.93	\$463.64	\$0.00	\$463.64
814-181-18	15180	4		4	1	11/15/95	1,587	0.0540	0.0540	\$1,981.93	\$463.64	\$0.00	\$463.64
814-181-19	15180	5		3	1	11/15/95	1,876	0.0740	0.0740	\$2,602.99	\$608.93	\$0.00	\$608.93
814-181-20	15180	6		4	1	11/15/95	1,477	0.0730	0.0730	\$1,981.93	\$463.64	\$0.00	\$463.64
814-181-21	15180	7		3	1	11/15/95	1,876	0.0640	0.0640	\$2,602.99	\$608.93	\$0.00	\$608.93
814-181-22	15180	8		4	1	11/15/95	1,587	0.0640	0.0640	\$1,981.93	\$463.64	\$0.00	\$463.64
814-181-24	15180	10		3	1	11/15/95	1,876	0.0820	0.0820	\$2,602.99	\$608.93	\$0.00	\$608.93
814-181-25	15180	11		4	1	11/26/97	1,477	0.0600	0.0600	\$1,981.93	\$463.64	\$0.00	\$463.64
814-181-26	15180	12		3	1	9/21/95	1,876	0.0520	0.0520	\$2,602.99	\$608.93	\$0.00	\$608.93
814-181-27	15180	13		3	1	9/21/95	1,777	0.0540	0.0540	\$2,602.99	\$608.93	\$0.00	\$608.93
814-181-28	15180	14		4	1	9/21/95	1,477	0.0520	0.0520	\$1,981.93	\$463.64	\$0.00	\$463.64
814-181-29	15180	15		3	1	11/26/97	1,787	0.0540	0.0540	\$2,602.99	\$608.93	\$0.00	\$608.93
814-181-30	15180	16		3	1	11/26/97	1,876	0.0780	0.0780	\$2,602.99	\$608.93	\$0.00	\$608.93
814-181-31	15180	17		3	1	11/15/95	1,876	0.0910	0.0910	\$2,602.99	\$608.93	\$0.00	\$608.93
814-181-33	15180	19		3	1	11/15/95	1,876	0.0650	0.0650	\$2,602.99	\$608.93	\$0.00	\$608.93
814-181-34	15180	20		4	1	11/15/95	1,587	0.0650	0.0650	\$1,981.93	\$463.64	\$0.00	\$463.64

**COMMUNITY FACILITIES DISTRICT NO. 87-5E
OF THE COUNTY OF ORANGE
(RANCHO SANTA MARGARITA)**

FISCAL YEAR 2012-13 SPECIAL TAX LEVY

9:30:57AM

ASSESSOR PARCEL NUMBER	TRACT	LOT	UNIT	TAX CLASS	NBR UNITS	PERMIT DATE	BLDG SQ FT	PARCEL ACRES	TAXABLE ACRES	MAXIMUM	STEP 1 SPECIAL TAX	STEP 2 SPECIAL TAX	2012-13 SPECIAL TAX
										TABLE 1/UNDEV SPECIAL TAX			
814-181-35	15180	21		4	1	11/15/95	1,477	0.0720	0.0720	\$1,981.93	\$463.64	\$0.00	\$463.64
814-181-36	15180	22		3	1	11/15/95	1,801	0.0660	0.0660	\$2,602.99	\$608.93	\$0.00	\$608.93
814-181-37	15180	23		4	1	11/15/95	1,477	0.0520	0.0520	\$1,981.93	\$463.64	\$0.00	\$463.64
814-181-38	15180	24		3	1	4/30/96	1,876	0.0780	0.0780	\$2,602.99	\$608.93	\$0.00	\$608.93
814-181-39	15180	25		4	1	4/30/96	1,477	0.0560	0.0560	\$1,981.93	\$463.64	\$0.00	\$463.64
814-181-40	15180	26		4	1	4/30/96	1,587	0.0560	0.0560	\$1,981.93	\$463.64	\$0.00	\$463.64
814-181-41	15180	27		3	1	4/30/96	1,876	0.0560	0.0560	\$2,602.99	\$608.93	\$0.00	\$608.93
814-181-42	15180	28		3	1	4/30/96	1,787	0.0540	0.0540	\$2,602.99	\$608.93	\$0.00	\$608.93
814-181-43	15180	29		3	1	4/30/96	1,876	0.0810	0.0810	\$2,602.99	\$608.93	\$0.00	\$608.93
814-181-44	15180	30		4	1	6/27/96	1,477	0.0730	0.0730	\$1,981.93	\$463.64	\$0.00	\$463.64
814-181-45	15180	31		3	1	6/27/96	1,876	0.0640	0.0640	\$2,602.99	\$608.93	\$0.00	\$608.93
814-181-46	15180	32		4	1	6/27/96	1,587	0.0640	0.0640	\$1,981.93	\$463.64	\$0.00	\$463.64
814-181-48	15180	34		4	1	6/27/96	1,587	0.0660	0.0660	\$1,981.93	\$463.64	\$0.00	\$463.64
814-181-49	15180	35		3	1	6/27/96	1,876	0.0610	0.0610	\$2,602.99	\$608.93	\$0.00	\$608.93
814-181-50	15180	36		4	1	6/27/96	1,587	0.0580	0.0580	\$1,981.93	\$463.64	\$0.00	\$463.64
814-181-51	15180	37		3	1	6/27/96	1,876	0.0520	0.0520	\$2,602.99	\$608.93	\$0.00	\$608.93
814-181-52	15180	38		4	1	6/27/96	1,477	0.0600	0.0600	\$1,981.93	\$463.64	\$0.00	\$463.64
814-181-53	15180	39		3	1	6/27/96	1,876	0.0550	0.0550	\$2,602.99	\$608.93	\$0.00	\$608.93
814-181-54	15180	40		4	1	6/27/96	1,477	0.0680	0.0680	\$1,981.93	\$463.64	\$0.00	\$463.64
814-181-56	15180	42		3	1	6/27/96	1,876	0.0560	0.0560	\$2,602.99	\$608.93	\$0.00	\$608.93
814-181-57	15180	43		4	1	6/27/96	1,587	0.0560	0.0560	\$1,981.93	\$463.64	\$0.00	\$463.64
814-181-58	15180	44		3	1	6/27/96	1,876	0.0560	0.0560	\$2,602.99	\$608.93	\$0.00	\$608.93
814-181-59	15180	45		3	1	6/27/96	1,973	0.0630	0.0630	\$2,602.99	\$608.93	\$0.00	\$608.93
814-181-61	15180	C		EX	0		0	0.1890	0.0000	\$0.00	\$0.00	\$0.00	\$0.00
814-181-62	15180	D		EX	0		0	0.2530	0.0000	\$0.00	\$0.00	\$0.00	\$0.00
814-181-63	15180	F		EX	0		0	0.0670	0.0000	\$0.00	\$0.00	\$0.00	\$0.00
814-181-64	15180	E		EX	0		0	0.0570	0.0000	\$0.00	\$0.00	\$0.00	\$0.00
814-181-66	15180	H		EX	0		0	0.0140	0.0000	\$0.00	\$0.00	\$0.00	\$0.00
814-181-67	15180	B		EX	0		0	0.2310	0.0000	\$0.00	\$0.00	\$0.00	\$0.00
814-181-70	15180	J		EX	0		0	0.3240	0.0000	\$0.00	\$0.00	\$0.00	\$0.00
814-181-79	15180	41		4	1	6/27/96	1,587	0.0670	0.0670	\$1,981.93	\$463.64	\$0.00	\$463.64
814-181-80	15180	33		3	1	6/27/96	1,876	0.0660	0.0660	\$2,602.99	\$608.93	\$0.00	\$608.93
814-181-81	15180	18		4	1	11/15/95	1,587	0.0890	0.0890	\$1,981.93	\$463.64	\$0.00	\$463.64
814-181-82	15180	9		4	1	11/15/95	1,477	0.0640	0.0640	\$1,981.93	\$463.64	\$0.00	\$463.64
814-181-83	15180	I		EX	0		0	0.1730	0.0000	\$0.00	\$0.00	\$0.00	\$0.00

**COMMUNITY FACILITIES DISTRICT NO. 87-5E
OF THE COUNTY OF ORANGE
(RANCHO SANTA MARGARITA)**

FISCAL YEAR 2012-13 SPECIAL TAX LEVY

9:30:57AM

ASSESSOR PARCEL NUMBER	TRACT	LOT	UNIT	TAX CLASS	NBR UNITS	PERMIT DATE	BLDG SQ FT	PARCEL ACRES	TAXABLE ACRES	MAXIMUM TABLE 1/UNDEV SPECIAL TAX	STEP 1 SPECIAL TAX	STEP 2 SPECIAL TAX	2012-13 SPECIAL TAX
814-181-84	15180	K		EX	0		0	0.5120	0.0000	\$0.00	\$0.00	\$0.00	\$0.00
814-181-85	15180	A		EX	0		0	1.2590	0.0000	\$0.00	\$0.00	\$0.00	\$0.00
814-181-86	15180	G		EX	0		0	0.2300	0.0000	\$0.00	\$0.00	\$0.00	\$0.00
814-182-01	15152	56		4	1	12/23/96	1,587	0.0530	0.0530	\$1,981.93	\$463.64	\$0.00	\$463.64
814-182-02	15152	55		3	1	12/23/96	1,876	0.0600	0.0600	\$2,602.99	\$608.93	\$0.00	\$608.93
814-182-03	15152	54		4	1	12/23/96	1,587	0.0710	0.0710	\$1,981.93	\$463.64	\$0.00	\$463.64
814-182-04	15152	53		3	1	12/23/96	1,876	0.0600	0.0600	\$2,602.99	\$608.93	\$0.00	\$608.93
814-182-05	15152	52		4	1	12/23/96	1,587	0.0610	0.0610	\$1,981.93	\$463.64	\$0.00	\$463.64
814-182-06	15152	51		4	1	12/23/96	1,587	0.0580	0.0580	\$1,981.93	\$463.64	\$0.00	\$463.64
814-182-07	15152	50		4	1	12/23/96	1,477	0.0520	0.0520	\$1,981.93	\$463.64	\$0.00	\$463.64
814-182-08	15152	49		4	1	12/23/96	1,587	0.0520	0.0520	\$1,981.93	\$463.64	\$0.00	\$463.64
814-182-09	15152	48		3	1	12/23/96	1,876	0.0520	0.0520	\$2,602.99	\$608.93	\$0.00	\$608.93
814-182-10	15152	47		4	1	12/23/96	1,477	0.0520	0.0520	\$1,981.93	\$463.64	\$0.00	\$463.64
814-182-11	15152	46		3	1	12/23/96	1,876	0.0630	0.0630	\$2,602.99	\$608.93	\$0.00	\$608.93
814-182-12	15152	45		4	1	12/23/96	1,587	0.0580	0.0580	\$1,981.93	\$463.64	\$0.00	\$463.64
814-182-13	15152	44		4	1	12/23/96	1,587	0.0520	0.0520	\$1,981.93	\$463.64	\$0.00	\$463.64
814-182-14	15152	43		4	1	12/23/96	1,587	0.0520	0.0520	\$1,981.93	\$463.64	\$0.00	\$463.64
814-182-15	15152	42		4	1	12/23/96	1,477	0.0520	0.0520	\$1,981.93	\$463.64	\$0.00	\$463.64
814-182-16	15152	41		3	1	12/23/96	1,876	0.0520	0.0520	\$2,602.99	\$608.93	\$0.00	\$608.93
814-182-17	15152	40		3	1	12/23/96	1,801	0.0520	0.0520	\$2,602.99	\$608.93	\$0.00	\$608.93
814-182-18	15152	39		3	1	12/23/96	1,876	0.0520	0.0520	\$2,602.99	\$608.93	\$0.00	\$608.93
814-182-19	15152	38		4	1	12/23/96	1,477	0.0760	0.0760	\$1,981.93	\$463.64	\$0.00	\$463.64
814-182-20	15152	37		4	1	12/23/96	1,587	0.0660	0.0660	\$1,981.93	\$463.64	\$0.00	\$463.64
814-182-21	15152	36		3	1	12/23/96	1,783	0.0590	0.0590	\$2,602.99	\$608.93	\$0.00	\$608.93
814-182-22	15152	35		3	1	12/23/96	1,876	0.0670	0.0670	\$2,602.99	\$608.93	\$0.00	\$608.93
814-182-23	15152	34		4	1	5/8/97	1,587	0.0520	0.0520	\$1,981.93	\$463.64	\$0.00	\$463.64
814-182-24	15152	33		3	1	5/8/97	1,876	0.0620	0.0620	\$2,602.99	\$608.93	\$0.00	\$608.93
814-182-25	15152	32		4	1	5/8/97	1,587	0.0520	0.0520	\$1,981.93	\$463.64	\$0.00	\$463.64
814-182-26	15152	24		4	1	5/8/97	1,477	0.0660	0.0660	\$1,981.93	\$463.64	\$0.00	\$463.64
814-182-27	15152	25		3	1	5/8/97	1,876	0.0580	0.0580	\$2,602.99	\$608.93	\$0.00	\$608.93
814-182-28	15152	26		4	1	5/8/97	1,587	0.0520	0.0520	\$1,981.93	\$463.64	\$0.00	\$463.64
814-182-29	15152	31		3	1	5/8/97	1,876	0.0520	0.0520	\$2,602.99	\$608.93	\$0.00	\$608.93
814-182-30	15152	30		4	1	5/8/97	1,477	0.0520	0.0520	\$1,981.93	\$463.64	\$0.00	\$463.64
814-182-31	15152	29		4	1	5/8/97	1,587	0.0520	0.0520	\$1,981.93	\$463.64	\$0.00	\$463.64
814-182-32	15152	28		3	1	5/8/97	1,876	0.0660	0.0660	\$2,602.99	\$608.93	\$0.00	\$608.93

**COMMUNITY FACILITIES DISTRICT NO. 87-5E
OF THE COUNTY OF ORANGE
(RANCHO SANTA MARGARITA)**

FISCAL YEAR 2012-13 SPECIAL TAX LEVY

9:30:57AM

ASSESSOR PARCEL NUMBER	TRACT	LOT	UNIT	TAX CLASS	NBR UNITS	PERMIT DATE	BLDG SQ FT	PARCEL ACRES	TAXABLE ACRES	MAXIMUM	STEP 1	STEP 2	2012-13
										TABLE 1/UNDEV SPECIAL TAX	SPECIAL TAX	SPECIAL TAX	SPECIAL TAX
814-182-33	15152	27		4	1	5/8/97	1,477	0.0620	0.0620	\$1,981.93	\$463.64	\$0.00	\$463.64
814-182-34	15152	23		4	1	5/8/97	1,587	0.0520	0.0520	\$1,981.93	\$463.64	\$0.00	\$463.64
814-182-35	15152	22		3	1	5/8/97	1,876	0.0520	0.0520	\$2,602.99	\$608.93	\$0.00	\$608.93
814-182-36	15152	21		4	1	5/8/97	1,477	0.0520	0.0520	\$1,981.93	\$463.64	\$0.00	\$463.64
814-182-37	15152	20		3	1	5/8/97	1,876	0.0560	0.0560	\$2,602.99	\$608.93	\$0.00	\$608.93
814-182-38	15152	19		4	1	5/8/97	1,587	0.0520	0.0520	\$1,981.93	\$463.64	\$0.00	\$463.64
814-182-39	15152	18		3	1	5/8/97	1,876	0.0520	0.0520	\$2,602.99	\$608.93	\$0.00	\$608.93
814-182-40	15152	17		4	1	5/8/97	1,477	0.0750	0.0750	\$1,981.93	\$463.64	\$0.00	\$463.64
814-182-41	15152	16		3	1	5/8/97	1,779	0.0630	0.0630	\$2,602.99	\$608.93	\$0.00	\$608.93
814-182-42	15152	15		4	1	8/14/97	1,587	0.0520	0.0520	\$1,981.93	\$463.64	\$0.00	\$463.64
814-182-43	15152	14		3	1	8/14/97	1,876	0.0520	0.0520	\$2,602.99	\$608.93	\$0.00	\$608.93
814-182-44	15152	13		4	1	8/14/97	1,587	0.0580	0.0580	\$1,981.93	\$463.64	\$0.00	\$463.64
814-182-45	15152	12		4	1	8/14/97	1,477	0.0790	0.0790	\$1,981.93	\$463.64	\$0.00	\$463.64
814-182-46	15152	11		4	1	8/14/97	1,587	0.0610	0.0610	\$1,981.93	\$463.64	\$0.00	\$463.64
814-182-47	15152	10		4	1	8/14/97	1,477	0.0610	0.0610	\$1,981.93	\$463.64	\$0.00	\$463.64
814-182-48	15152	9		4	1	8/14/97	1,587	0.0760	0.0760	\$1,981.93	\$463.64	\$0.00	\$463.64
814-182-49	15152	8		3	1	8/14/97	1,946	0.0750	0.0750	\$2,602.99	\$608.93	\$0.00	\$608.93
814-182-50	15152	7		3	1	8/14/97	1,876	0.0650	0.0650	\$2,602.99	\$608.93	\$0.00	\$608.93
814-182-51	15152	6		4	1	8/14/97	1,587	0.0650	0.0650	\$1,981.93	\$463.64	\$0.00	\$463.64
814-182-52	15152	5		4	1	8/14/97	1,477	0.0650	0.0650	\$1,981.93	\$463.64	\$0.00	\$463.64
814-182-53	15152	4		3	1	8/14/97	1,774	0.0670	0.0670	\$2,602.99	\$608.93	\$0.00	\$608.93
814-182-54	15152	3		4	1	8/14/97	1,477	0.0690	0.0690	\$1,981.93	\$463.64	\$0.00	\$463.64
814-182-55	15152	2		3	1	8/14/97	1,876	0.0910	0.0910	\$2,602.99	\$608.93	\$0.00	\$608.93
814-182-56	15152	1		4	1	8/14/97	1,587	0.0020	0.0020	\$1,981.93	\$463.64	\$0.00	\$463.64
814-182-57	15152	B		EX	0		0	0.0170	0.0000	\$0.00	\$0.00	\$0.00	\$0.00
814-182-58	15152	C		EX	0		0	0.0850	0.0000	\$0.00	\$0.00	\$0.00	\$0.00
814-182-59	15152	D		EX	0		0	0.2870	0.0000	\$0.00	\$0.00	\$0.00	\$0.00
814-182-60	15152	I		EX	0		0	0.0020	0.0000	\$0.00	\$0.00	\$0.00	\$0.00
814-182-61	15152	E		EX	0		0	0.2600	0.0000	\$0.00	\$0.00	\$0.00	\$0.00
814-182-62	15152	A		EX	0		0	0.6470	0.0000	\$0.00	\$0.00	\$0.00	\$0.00
814-182-63	15152	F		EX	0		0	0.5770	0.0000	\$0.00	\$0.00	\$0.00	\$0.00
814-182-64	15152	H		EX	0		0	0.3500	0.0000	\$0.00	\$0.00	\$0.00	\$0.00
814-182-65	15152	I		EX	0		0	0.0020	0.0000	\$0.00	\$0.00	\$0.00	\$0.00
814-191-06	14909	H		EX	0		0	0.1310	0.0000	\$0.00	\$0.00	\$0.00	\$0.00
814-191-07	14909	G		EX	0		0	0.0390	0.0000	\$0.00	\$0.00	\$0.00	\$0.00

**COMMUNITY FACILITIES DISTRICT NO. 87-5E
OF THE COUNTY OF ORANGE
(RANCHO SANTA MARGARITA)**

FISCAL YEAR 2012-13 SPECIAL TAX LEVY

9:30:57AM

ASSESSOR PARCEL NUMBER	TRACT	LOT	UNIT	TAX CLASS	NBR UNITS	PERMIT DATE	BLDG SQ FT	PARCEL ACRES	TAXABLE ACRES	MAXIMUM	STEP 1	STEP 2	2012-13
										TABLE 1/UNDEV SPECIAL TAX	SPECIAL TAX	SPECIAL TAX	SPECIAL TAX
814-191-08	14909	F		EX	0		0	0.0780	0.0000	\$0.00	\$0.00	\$0.00	\$0.00
814-191-09	14909	I		EX	0		0	0.0430	0.0000	\$0.00	\$0.00	\$0.00	\$0.00
814-191-10	14909	E		EX	0		0	0.1960	0.0000	\$0.00	\$0.00	\$0.00	\$0.00
814-191-11	14909	D		EX	0		0	0.1680	0.0000	\$0.00	\$0.00	\$0.00	\$0.00
814-191-12	14909	C		EX	0		0	0.1620	0.0000	\$0.00	\$0.00	\$0.00	\$0.00
814-191-13	14909	B		EX	0		0	0.1480	0.0000	\$0.00	\$0.00	\$0.00	\$0.00
814-191-14	14909	A		EX	0		0	0.1820	0.0000	\$0.00	\$0.00	\$0.00	\$0.00
814-191-15	14909	1-5		EX	0		0	0.0000	0.0000	\$0.00	\$0.00	\$0.00	\$0.00
814-201-04	15278	4		EX	0		0	3.5000	0.0000	\$0.00	\$0.00	\$0.00	\$0.00
814-201-05	15278	A		EX	0		0	0.6580	0.0000	\$0.00	\$0.00	\$0.00	\$0.00
814-201-09	15351	1		11	498	4/21/97	450,512	20.0250	20.0250	\$445,742.25	\$104,273.62	\$0.00	\$104,273.62
814-201-10	15351	A		EX	0		0	0.3750	0.0000	\$0.00	\$0.00	\$0.00	\$0.00
814-201-11	15351	B		EX	0		0	0.1870	0.0000	\$0.00	\$0.00	\$0.00	\$0.00
814-201-12				EX	0		0	10.4360	0.0000	\$0.00	\$0.00	\$0.00	\$0.00
814-211-15	13425	POR 3		12	1	2/17/00	16,734	1.8750	1.8750	\$22,519.33	\$5,268.00	\$0.00	\$5,268.00
814-211-16	13425	5		12	1	7/7/00	2,986	0.4350	0.4350	\$5,224.48	\$1,222.18	\$0.00	\$1,222.18
814-211-17	13425	POR 1		0	0		0	2.1650	2.1650	\$55,860.49	\$502.39	\$0.00	\$502.39
814-211-18	13425	POR 4		12	1	1/26/00	135,197	9.7800	9.7800	\$126,566.66	\$29,608.06	\$0.00	\$29,608.06
814-211-22	13425	B		EX	0		0	0.3070	0.0000	\$0.00	\$0.00	\$0.00	\$0.00
814-211-23	13425	C		EX	0		0	0.0690	0.0000	\$0.00	\$0.00	\$0.00	\$0.00
814-211-24	13425	D		EX	0		0	0.2310	0.0000	\$0.00	\$0.00	\$0.00	\$0.00
814-211-25	13425	E		EX	0		0	0.4650	0.0000	\$0.00	\$0.00	\$0.00	\$0.00
814-211-26	13425	F		EX	0		0	0.2650	0.0000	\$0.00	\$0.00	\$0.00	\$0.00
814-211-27	13425	POR G		EX	0		0	0.2390	0.0000	\$0.00	\$0.00	\$0.00	\$0.00
814-211-28	13425	POR G		EX	0		0	0.0370	0.0000	\$0.00	\$0.00	\$0.00	\$0.00
814-211-29	13425	POR G		EX	0		0	0.0520	0.0000	\$0.00	\$0.00	\$0.00	\$0.00
814-211-30	13425	H		EX	0		0	0.3580	0.0000	\$0.00	\$0.00	\$0.00	\$0.00
814-211-31	13425	POR A		EX	0		0	0.7960	0.0000	\$0.00	\$0.00	\$0.00	\$0.00
814-211-32	13425	POR A		EX	0		0	1.2110	0.0000	\$0.00	\$0.00	\$0.00	\$0.00
814-211-33				EX	0		0	14.1980	0.0000	\$0.00	\$0.00	\$0.00	\$0.00
814-211-34	200016	2		EX	0		0	2.4000	0.0000	\$0.00	\$0.00	\$0.00	\$0.00
814-211-35	200016	1		EX	0		0	2.9600	0.0000	\$0.00	\$0.00	\$0.00	\$0.00
814-211-36	200016	1		12	1	1/31/02	13,675	1.2000	1.2000	\$14,412.37	\$3,371.52	\$0.00	\$3,371.52
814-211-37	200016	2		12	1	10/12/00	7,788	4.0900	4.0900	\$49,122.16	\$11,491.27	\$0.00	\$11,491.27
814-211-38	200110	POR 1		12	1	2/17/00	12,663	2.5700	2.5700	\$30,866.49	\$7,220.68	\$0.00	\$7,220.68

**COMMUNITY FACILITIES DISTRICT NO. 87-5E
OF THE COUNTY OF ORANGE
(RANCHO SANTA MARGARITA)**

FISCAL YEAR 2012-13 SPECIAL TAX LEVY

9:30:57AM

ASSESSOR PARCEL NUMBER	TRACT	LOT	UNIT	TAX CLASS	NBR UNITS	PERMIT DATE	BLDG SQ FT	PARCEL ACRES	TAXABLE ACRES	MAXIMUM TABLE 1/UNDEV SPECIAL TAX	STEP 1 SPECIAL TAX	STEP 2 SPECIAL TAX	2012-13 SPECIAL TAX
814-211-39	200110	2		12	1	1/27/00	40,971	3.7230	3.7230	\$44,714.38	\$10,460.15	\$0.00	\$10,460.15
814-211-40	200110	3		12	1	1/27/00	45,840	3.3760	3.3760	\$42,913.79	\$10,038.93	\$0.00	\$10,038.93
814-211-41	200110	4		12	1	1/27/00	37,371	3.4360	3.4360	\$41,267.42	\$9,653.79	\$0.00	\$9,653.79
814-221-01	15298	71		5	1	5/1/97	1,668	0.0788	0.0788	\$1,924.85	\$450.28	\$0.00	\$450.28
814-221-02	15298	70		5	1	5/1/97	1,897	0.0748	0.0748	\$1,924.85	\$450.28	\$0.00	\$450.28
814-221-03	15298	69		5	1	5/1/97	1,971	0.0733	0.0733	\$1,924.85	\$450.28	\$0.00	\$450.28
814-221-04	15298	68		7	1	5/1/97	1,348	0.0775	0.0775	\$1,584.63	\$370.70	\$0.00	\$370.70
814-221-05	15298	67		5	1	5/1/97	1,971	0.1052	0.1052	\$1,924.85	\$450.28	\$0.00	\$450.28
814-221-06	15298	66		5	1	5/1/77	1,715	0.0916	0.0916	\$1,924.85	\$450.28	\$0.00	\$450.28
814-221-07	15298	65		6	1	5/1/97	1,612	0.0729	0.0729	\$1,867.76	\$436.93	\$0.00	\$436.93
814-221-08	15298	64		5	1	2/26/97	1,971	0.0695	0.0695	\$1,924.85	\$450.28	\$0.00	\$450.28
814-221-09	15298	63		7	1	2/26/97	1,348	0.0669	0.0669	\$1,584.63	\$370.70	\$0.00	\$370.70
814-221-10	15298	62		5	1	2/26/97	1,971	0.0686	0.0686	\$1,924.85	\$450.28	\$0.00	\$450.28
814-221-11	15298	61		5	1	2/26/97	1,715	0.0681	0.0681	\$1,924.85	\$450.28	\$0.00	\$450.28
814-221-12	15298	60		5	1	2/26/97	1,971	0.0679	0.0679	\$1,924.85	\$450.28	\$0.00	\$450.28
814-221-13	15298	59		7	1	2/26/97	1,348	0.0728	0.0728	\$1,584.63	\$370.70	\$0.00	\$370.70
814-221-14	15298	58		5	1	2/26/97	2,085	0.0692	0.0692	\$1,924.85	\$450.28	\$0.00	\$450.28
814-221-15	15298	57		5	1	2/26/97	1,971	0.0659	0.0659	\$1,924.85	\$450.28	\$0.00	\$450.28
814-221-16	15298	56		7	1	2/26/97	1,348	0.0659	0.0659	\$1,584.63	\$370.70	\$0.00	\$370.70
814-221-17	15298	55		5	1	2/26/97	1,715	0.0659	0.0659	\$1,924.85	\$450.28	\$0.00	\$450.28
814-221-18	15298	54		7	1	7/28/97	1,348	0.0643	0.0643	\$1,584.63	\$370.70	\$0.00	\$370.70
814-221-19	15298	53		5	1	7/28/97	1,971	0.0819	0.0819	\$1,924.85	\$450.28	\$0.00	\$450.28
814-221-20	15298	97		7	1	2/26/97	1,348	0.0802	0.0802	\$1,584.63	\$370.70	\$0.00	\$370.70
814-221-21	15298	96		5	1	2/26/97	1,971	0.0655	0.0655	\$1,924.85	\$450.28	\$0.00	\$450.28
814-221-22	15298	95		5	1	2/26/97	1,715	0.0655	0.0655	\$1,924.85	\$450.28	\$0.00	\$450.28
814-221-23	15298	94		5	1	2/26/97	1,971	0.0655	0.0655	\$1,924.85	\$450.28	\$0.00	\$450.28
814-221-24	15298	93		5	1	2/26/97	1,715	0.0655	0.0655	\$1,924.85	\$450.28	\$0.00	\$450.28
814-221-25	15298	92		7	1	2/26/97	1,348	0.0721	0.0721	\$1,584.63	\$370.70	\$0.00	\$370.70
814-221-26	15298	91		5	1	2/26/97	1,971	0.0689	0.0689	\$1,924.85	\$450.28	\$0.00	\$450.28
814-221-27	15298	90		5	1	2/26/97	1,715	0.0666	0.0666	\$1,924.85	\$450.28	\$0.00	\$450.28
814-221-28	15298	89		7	1	2/26/97	1,348	0.0679	0.0679	\$1,584.63	\$370.70	\$0.00	\$370.70
814-221-29	15298	88		5	1	2/26/97	1,715	0.0965	0.0965	\$1,924.85	\$450.28	\$0.00	\$450.28
814-221-30	15298	87		3	1	8/28/96	1,971	0.1125	0.1125	\$2,602.99	\$608.93	\$0.00	\$608.93
814-221-31	15298	86		7	1	8/28/96	1,348	0.0750	0.0750	\$1,584.63	\$370.70	\$0.00	\$370.70
814-221-32	15298	85		5	1	8/28/96	1,971	0.0757	0.0757	\$1,924.85	\$450.28	\$0.00	\$450.28

**COMMUNITY FACILITIES DISTRICT NO. 87-5E
OF THE COUNTY OF ORANGE
(RANCHO SANTA MARGARITA)**

FISCAL YEAR 2012-13 SPECIAL TAX LEVY

9:30:57AM

ASSESSOR PARCEL NUMBER	TRACT	LOT	UNIT	TAX CLASS	NBR UNITS	PERMIT DATE	BLDG SQ FT	PARCEL ACRES	TAXABLE ACRES	MAXIMUM TABLE 1/UNDEV SPECIAL TAX	STEP 1 SPECIAL TAX	STEP 2 SPECIAL TAX	2012-13 SPECIAL TAX
814-221-33	15298	84		5	1	8/28/96	1,715	0.0747	0.0747	\$1,924.85	\$450.28	\$0.00	\$450.28
814-221-34	15298	83		7	1	8/28/96	1,348	0.0736	0.0736	\$1,584.63	\$370.70	\$0.00	\$370.70
814-221-35	15298	82		5	1	8/28/96	1,971	0.0725	0.0725	\$1,924.85	\$450.28	\$0.00	\$450.28
814-222-01	15298	132		7	1	8/28/96	1,348	0.0643	0.0643	\$1,584.63	\$370.70	\$0.00	\$370.70
814-222-02	15298	133		5	1	8/28/96	1,715	0.0643	0.0643	\$1,924.85	\$450.28	\$0.00	\$450.28
814-222-03	15298	134		5	1	8/28/96	1,971	0.0643	0.0643	\$1,924.85	\$450.28	\$0.00	\$450.28
814-222-04	15298	135		5	1	8/28/96	1,971	0.0643	0.0643	\$1,924.85	\$450.28	\$0.00	\$450.28
814-222-05	15298	136		7	1	8/28/96	1,348	0.0829	0.0829	\$1,584.63	\$370.70	\$0.00	\$370.70
814-222-06	15298	117		5	1	8/30/96	1,971	0.0785	0.0785	\$1,924.85	\$450.28	\$0.00	\$450.28
814-222-07	15298	118		7	1	8/30/96	1,348	0.0643	0.0643	\$1,584.63	\$370.70	\$0.00	\$370.70
814-222-08	15298	119		5	1	8/30/96	1,971	0.0643	0.0643	\$1,924.85	\$450.28	\$0.00	\$450.28
814-222-09	15298	120		5	1	8/30/96	1,715	0.0643	0.0643	\$1,924.85	\$450.28	\$0.00	\$450.28
814-222-10	15298	121		5	1	8/30/96	1,971	0.0643	0.0643	\$1,924.85	\$450.28	\$0.00	\$450.28
814-223-01	15298	112		5	1	8/30/96	1,715	0.0643	0.0643	\$1,924.85	\$450.28	\$0.00	\$450.28
814-223-02	15298	113		5	1	8/30/96	1,971	0.0643	0.0643	\$1,924.85	\$450.28	\$0.00	\$450.28
814-223-03	15298	114		7	1	8/30/96	1,348	0.0643	0.0643	\$1,584.63	\$370.70	\$0.00	\$370.70
814-223-04	15298	115		5	1	8/30/96	1,715	0.0643	0.0643	\$1,924.85	\$450.28	\$0.00	\$450.28
814-223-05	15298	116		7	1	8/30/96	1,348	0.0708	0.0708	\$1,584.63	\$370.70	\$0.00	\$370.70
814-223-06	15298	98		5	1	6/25/97	1,715	0.0885	0.0885	\$1,924.85	\$450.28	\$0.00	\$450.28
814-223-07	15298	99		5	1	6/25/97	1,971	0.0659	0.0659	\$1,924.85	\$450.28	\$0.00	\$450.28
814-223-08	15298	100		5	1	6/25/97	1,715	0.0659	0.0659	\$1,924.85	\$450.28	\$0.00	\$450.28
814-223-09	15298	101		7	1	6/25/97	1,348	0.0659	0.0659	\$1,584.63	\$370.70	\$0.00	\$370.70
814-224-01	15298	27		5	1	6/25/97	1,715	0.0643	0.0643	\$1,924.85	\$450.28	\$0.00	\$450.28
814-224-02	15298	28		7	1	6/25/97	1,348	0.0643	0.0643	\$1,584.63	\$370.70	\$0.00	\$370.70
814-224-03	15298	29		5	1	6/25/97	1,971	0.0643	0.0643	\$1,924.85	\$450.28	\$0.00	\$450.28
814-224-04	15298	30		5	1	6/25/97	1,715	0.0643	0.0643	\$1,924.85	\$450.28	\$0.00	\$450.28
814-224-05	15298	31		5	1	7/28/97	1,715	0.0643	0.0643	\$1,924.85	\$450.28	\$0.00	\$450.28
814-224-06	15298	32		5	1	7/28/97	1,681	0.0643	0.0643	\$1,924.85	\$450.28	\$0.00	\$450.28
814-224-07	15298	33		5	1	7/28/97	1,715	0.0643	0.0643	\$1,924.85	\$450.28	\$0.00	\$450.28
814-224-08	15298	34		5	1	7/28/97	1,681	0.0642	0.0642	\$1,924.85	\$450.28	\$0.00	\$450.28
814-224-09	15298	35		5	1	7/28/97	1,971	0.0649	0.0649	\$1,924.85	\$450.28	\$0.00	\$450.28
814-224-10	15298	36		5	1	7/28/97	1,715	0.1044	0.1044	\$1,924.85	\$450.28	\$0.00	\$450.28
814-224-11	15298	37		5	1	7/28/97	1,971	0.1128	0.1128	\$1,924.85	\$450.28	\$0.00	\$450.28
814-224-12	15298	38		7	1	7/28/97	1,348	0.0701	0.0701	\$1,584.63	\$370.70	\$0.00	\$370.70
814-224-13	15298	39		5	1	7/28/97	1,971	0.0692	0.0692	\$1,924.85	\$450.28	\$0.00	\$450.28

**COMMUNITY FACILITIES DISTRICT NO. 87-5E
OF THE COUNTY OF ORANGE
(RANCHO SANTA MARGARITA)**

FISCAL YEAR 2012-13 SPECIAL TAX LEVY

9:30:57AM

<u>ASSESSOR PARCEL NUMBER</u>	<u>TRACT</u>	<u>LOT</u>	<u>UNIT</u>	<u>TAX CLASS</u>	<u>NBR UNITS</u>	<u>PERMIT DATE</u>	<u>BLDG SQ FT</u>	<u>PARCEL ACRES</u>	<u>TAXABLE ACRES</u>	<u>MAXIMUM TABLE 1/UNDEV SPECIAL TAX</u>	<u>STEP 1 SPECIAL TAX</u>	<u>STEP 2 SPECIAL TAX</u>	<u>2012-13 SPECIAL TAX</u>
814-224-14	15298	40		7	1	7/28/97	1,348	0.0862	0.0862	\$1,584.63	\$370.70	\$0.00	\$370.70
814-224-15	15298	B		EX	0		0	0.3600	0.0000	\$0.00	\$0.00	\$0.00	\$0.00
814-225-01	15298	52		5	1	5/1/97	1,971	0.0887	0.0887	\$1,924.85	\$450.28	\$0.00	\$450.28
814-225-02	15298	51		5	1	5/1/97	1,715	0.0659	0.0659	\$1,924.85	\$450.28	\$0.00	\$450.28
814-225-03	15298	50		7	1	2/26/97	1,348	0.0659	0.0659	\$1,584.63	\$370.70	\$0.00	\$370.70
814-225-04	15298	49		5	1	2/26/97	1,715	0.0659	0.0659	\$1,924.85	\$450.28	\$0.00	\$450.28
814-225-05	15298	48		5	1	2/26/97	1,971	0.0681	0.0681	\$1,924.85	\$450.28	\$0.00	\$450.28
814-225-06	15298	47		7	1	2/26/97	1,348	0.0664	0.0664	\$1,584.63	\$370.70	\$0.00	\$370.70
814-225-07	15298	46		5	1	2/26/97	1,715	0.0708	0.0708	\$1,924.85	\$450.28	\$0.00	\$450.28
814-225-08	15298	45		5	1	2/26/97	1,971	0.0682	0.0682	\$1,924.85	\$450.28	\$0.00	\$450.28
814-225-09	15298	44		7	1	2/26/97	1,348	0.0675	0.0675	\$1,584.63	\$370.70	\$0.00	\$370.70
814-225-10	15298	43		5	1	2/26/97	1,971	0.0683	0.0683	\$1,924.85	\$450.28	\$0.00	\$450.28
814-225-11	15298	42		6	1	2/26/97	1,612	0.0669	0.0669	\$1,867.76	\$436.93	\$0.00	\$436.93
814-225-12	15298	41		5	1	2/26/97	1,715	0.0904	0.0904	\$1,924.85	\$450.28	\$0.00	\$450.28
814-231-01	15298	1		5	1	7/29/96	1,971	0.0721	0.0721	\$1,924.85	\$450.28	\$0.00	\$450.28
814-231-02	15298	2		5	1	7/29/96	1,715	0.0682	0.0682	\$1,924.85	\$450.28	\$0.00	\$450.28
814-231-03	15298	3		7	1	7/29/96	1,348	0.0725	0.0725	\$1,584.63	\$370.70	\$0.00	\$370.70
814-231-04	15298	4		5	1	7/29/96	2,150	0.0728	0.0728	\$1,924.85	\$450.28	\$0.00	\$450.28
814-231-05	15298	5		5	1	3/31/98	1,715	0.0976	0.0976	\$1,924.85	\$450.28	\$0.00	\$450.28
814-231-06	15298	6		7	1	3/31/98	1,348	0.0946	0.0946	\$1,584.63	\$370.70	\$0.00	\$370.70
814-231-07	15298	7		5	1	8/28/96	1,715	0.0756	0.0756	\$1,924.85	\$450.28	\$0.00	\$450.28
814-231-08	15298	8		5	1	8/28/96	1,971	0.0698	0.0698	\$1,924.85	\$450.28	\$0.00	\$450.28
814-231-09	15298	9		7	1	8/28/96	1,348	0.0689	0.0689	\$1,584.63	\$370.70	\$0.00	\$370.70
814-231-10	15298	10		5	1	8/28/96	1,715	0.0664	0.0664	\$1,924.85	\$450.28	\$0.00	\$450.28
814-231-11	15298	11		5	1	8/28/96	1,715	0.0670	0.0670	\$1,924.85	\$450.28	\$0.00	\$450.28
814-231-12	15298	12		5	1	8/28/96	1,971	0.0667	0.0667	\$1,924.85	\$450.28	\$0.00	\$450.28
814-231-13	15298	13		5	1	8/30/96	1,715	0.0658	0.0658	\$1,924.85	\$450.28	\$0.00	\$450.28
814-231-14	15298	14		7	1	8/30/96	1,348	0.0653	0.0653	\$1,584.63	\$370.70	\$0.00	\$370.70
814-231-15	15298	15		5	1	8/30/96	1,971	0.0653	0.0653	\$1,924.85	\$450.28	\$0.00	\$450.28
814-231-16	15298	16		5	1	8/30/96	1,715	0.0662	0.0662	\$1,924.85	\$450.28	\$0.00	\$450.28
814-231-17	15298	17		7	1	6/25/97	1,348	0.0644	0.0644	\$1,584.63	\$370.70	\$0.00	\$370.70
814-231-18	15298	18		5	1	6/25/97	1,715	0.1039	0.1039	\$1,924.85	\$450.28	\$0.00	\$450.28
814-231-19	15298	19		5	1	6/25/97	1,971	0.1169	0.1169	\$1,924.85	\$450.28	\$0.00	\$450.28
814-231-20	15298	20		5	1	6/25/97	1,715	0.0693	0.0693	\$1,924.85	\$450.28	\$0.00	\$450.28
814-231-21	15298	21		5	1	6/25/97	1,715	0.0659	0.0659	\$1,924.85	\$450.28	\$0.00	\$450.28

**COMMUNITY FACILITIES DISTRICT NO. 87-5E
OF THE COUNTY OF ORANGE
(RANCHO SANTA MARGARITA)**

FISCAL YEAR 2012-13 SPECIAL TAX LEVY

9:30:57AM

ASSESSOR PARCEL NUMBER	TRACT	LOT	UNIT	TAX CLASS	NBR UNITS	PERMIT DATE	BLDG SQ FT	PARCEL ACRES	TAXABLE ACRES	MAXIMUM	STEP 1	STEP 2	2012-13
										TABLE 1/UNDEV SPECIAL TAX	SPECIAL TAX	SPECIAL TAX	SPECIAL TAX
814-231-22	15298	22		7	1	6/25/97	1,348	0.0643	0.0643	\$1,584.63	\$370.70	\$0.00	\$370.70
814-231-23	15298	23		5	1	6/25/97	1,715	0.0643	0.0643	\$1,924.85	\$450.28	\$0.00	\$450.28
814-231-24	15298	24		5	1	6/25/97	1,971	0.0643	0.0643	\$1,924.85	\$450.28	\$0.00	\$450.28
814-231-25	15298	25		5	1	6/25/97	1,971	0.0643	0.0643	\$1,924.85	\$450.28	\$0.00	\$450.28
814-231-26	15298	26		7	1	6/25/97	1,348	0.0643	0.0643	\$1,584.63	\$370.70	\$0.00	\$370.70
814-231-27	15298	B		EX	0		0	0.3030	0.0000	\$0.00	\$0.00	\$0.00	\$0.00
814-231-28	15298	A		EX	0		0	0.4670	0.0000	\$0.00	\$0.00	\$0.00	\$0.00
814-232-01	15298	76		5	1	2/19/98	1,886	0.1140	0.1140	\$1,924.85	\$450.28	\$0.00	\$450.28
814-232-02	15298	75		5	1	2/19/98	1,971	0.0961	0.0961	\$1,924.85	\$450.28	\$0.00	\$450.28
814-232-03	15298	74		5	1	5/1/97	1,971	0.0986	0.0986	\$1,924.85	\$450.28	\$0.00	\$450.28
814-232-04	15298	73		5	1	5/1/97	1,715	0.1100	0.1100	\$1,924.85	\$450.28	\$0.00	\$450.28
814-232-05	15298	72		5	1	5/1/97	1,971	0.0822	0.0822	\$1,924.85	\$450.28	\$0.00	\$450.28
814-232-06	15298	81		5	1	8/28/96	1,715	0.0714	0.0714	\$1,924.85	\$450.28	\$0.00	\$450.28
814-232-07	15298	80		5	1	8/28/96	1,971	0.0703	0.0703	\$1,924.85	\$450.28	\$0.00	\$450.28
814-232-08	15298	79		6	1	8/28/96	1,598	0.0692	0.0692	\$1,867.76	\$436.93	\$0.00	\$436.93
814-232-09	15298	78		5	1	8/28/96	1,971	0.0681	0.0681	\$1,924.85	\$450.28	\$0.00	\$450.28
814-232-10	15298	77		5	1	8/28/96	1,715	0.0897	0.0897	\$1,924.85	\$450.28	\$0.00	\$450.28
814-233-01	15298	127		7	1	8/28/96	1,348	0.0766	0.0766	\$1,584.63	\$370.70	\$0.00	\$370.70
814-233-02	15298	128		5	1	8/28/96	1,715	0.0643	0.0643	\$1,924.85	\$450.28	\$0.00	\$450.28
814-233-03	15298	129		5	1	8/28/96	1,715	0.0643	0.0643	\$1,924.85	\$450.28	\$0.00	\$450.28
814-233-04	15298	130		5	1	8/28/96	1,971	0.0643	0.0643	\$1,924.85	\$450.28	\$0.00	\$450.28
814-233-05	15298	131		5	1	8/28/96	1,715	0.0643	0.0643	\$1,924.85	\$450.28	\$0.00	\$450.28
814-233-06	15298	122		7	1	8/30/96	1,348	0.0643	0.0643	\$1,584.63	\$370.70	\$0.00	\$370.70
814-233-07	15298	123		5	1	8/30/96	1,715	0.0643	0.0643	\$1,924.85	\$450.28	\$0.00	\$450.28
814-233-08	15298	124		5	1	8/30/96	1,971	0.0643	0.0643	\$1,924.85	\$450.28	\$0.00	\$450.28
814-233-09	15298	125		5	1	8/30/96	1,715	0.0643	0.0643	\$1,924.85	\$450.28	\$0.00	\$450.28
814-233-10	15298	126		7	1	8/30/96	1,348	0.0779	0.0779	\$1,584.63	\$370.70	\$0.00	\$370.70
814-234-01	15298	107		7	1	8/30/96	1,348	0.0700	0.0700	\$1,584.63	\$370.70	\$0.00	\$370.70
814-234-02	15298	108		5	1	8/30/96	1,971	0.0643	0.0643	\$1,924.85	\$450.28	\$0.00	\$450.28
814-234-03	15298	109		5	1	8/30/96	1,715	0.0643	0.0643	\$1,924.85	\$450.28	\$0.00	\$450.28
814-234-04	15298	110		7	1	8/30/96	1,348	0.0643	0.0643	\$1,584.63	\$370.70	\$0.00	\$370.70
814-234-05	15298	111		5	1	8/30/96	1,971	0.0643	0.0643	\$1,924.85	\$450.28	\$0.00	\$450.28
814-234-06	15298	102		5	1	6/25/97	1,715	0.0659	0.0659	\$1,924.85	\$450.28	\$0.00	\$450.28
814-234-07	15298	103		5	1	6/25/97	2,362	0.0659	0.0659	\$1,924.85	\$450.28	\$0.00	\$450.28
814-234-08	15298	104		5	1	6/25/97	1,971	0.0659	0.0659	\$1,924.85	\$450.28	\$0.00	\$450.28

**COMMUNITY FACILITIES DISTRICT NO. 87-5E
OF THE COUNTY OF ORANGE
(RANCHO SANTA MARGARITA)**

FISCAL YEAR 2012-13 SPECIAL TAX LEVY

9:30:57AM

<u>ASSESSOR PARCEL NUMBER</u>	<u>TRACT</u>	<u>LOT</u>	<u>UNIT</u>	<u>TAX CLASS</u>	<u>NBR UNITS</u>	<u>PERMIT DATE</u>	<u>BLDG SQ FT</u>	<u>PARCEL ACRES</u>	<u>TAXABLE ACRES</u>	<u>MAXIMUM TABLE 1/UNDEV SPECIAL TAX</u>	<u>STEP 1 SPECIAL TAX</u>	<u>STEP 2 SPECIAL TAX</u>	<u>2012-13 SPECIAL TAX</u>
814-234-09	15298	105		7	1	6/25/97	1,348	0.0659	0.0659	\$1,584.63	\$370.70	\$0.00	\$370.70
814-234-10	15298	106		3	1	6/25/97	1,971	0.1026	0.1026	\$2,602.99	\$608.93	\$0.00	\$608.93
814-241-01	15481	18		4	1	5/19/98	1,663	0.0590	0.0590	\$1,981.93	\$463.64	\$0.00	\$463.64
814-241-02	15481	17		4	1	5/19/98	1,492	0.0590	0.0590	\$1,981.93	\$463.64	\$0.00	\$463.64
814-241-03	15481	16		4	1	5/19/98	1,663	0.0590	0.0590	\$1,981.93	\$463.64	\$0.00	\$463.64
814-241-04	15481	15		4	1	5/19/98	1,492	0.0590	0.0590	\$1,981.93	\$463.64	\$0.00	\$463.64
814-241-05	15481	14		4	1	5/19/98	1,663	0.0590	0.0590	\$1,981.93	\$463.64	\$0.00	\$463.64
814-241-06	15481	13		4	1	5/19/98	1,622	0.0590	0.0590	\$1,981.93	\$463.64	\$0.00	\$463.64
814-241-07	15481	12		4	1	5/19/98	1,663	0.0640	0.0640	\$1,981.93	\$463.64	\$0.00	\$463.64
814-241-08	15481	11		4	1	10/16/97	1,378	0.0650	0.0650	\$1,981.93	\$463.64	\$0.00	\$463.64
814-241-09	15481	10		4	1	10/16/97	1,622	0.0620	0.0620	\$1,981.93	\$463.64	\$0.00	\$463.64
814-241-10	15481	9		4	1	10/16/97	1,492	0.0900	0.0900	\$1,981.93	\$463.64	\$0.00	\$463.64
814-241-11	15481	8		4	1	10/16/97	1,622	0.0710	0.0710	\$1,981.93	\$463.64	\$0.00	\$463.64
814-241-12	15481	7		4	1	10/16/97	1,663	0.0630	0.0630	\$1,981.93	\$463.64	\$0.00	\$463.64
814-241-13	15481	6		4	1	10/16/97	1,492	0.0630	0.0630	\$1,981.93	\$463.64	\$0.00	\$463.64
814-241-14	15481	5		4	1	10/16/97	1,663	0.0630	0.0630	\$1,981.93	\$463.64	\$0.00	\$463.64
814-241-15	15481	4		4	1	10/16/97	1,622	0.0630	0.0630	\$1,981.93	\$463.64	\$0.00	\$463.64
814-241-16	15481	3		4	1	10/16/97	1,378	0.0630	0.0630	\$1,981.93	\$463.64	\$0.00	\$463.64
814-241-17	15481	2		4	1	10/16/97	1,663	0.0630	0.0630	\$1,981.93	\$463.64	\$0.00	\$463.64
814-241-18	15481	1		4	1	10/16/97	1,492	0.0740	0.0740	\$1,981.93	\$463.64	\$0.00	\$463.64
814-241-19	15481	30		4	1	10/16/97	1,622	0.0830	0.0830	\$1,981.93	\$463.64	\$0.00	\$463.64
814-241-20	15481	29		4	1	10/16/97	1,663	0.0660	0.0660	\$1,981.93	\$463.64	\$0.00	\$463.64
814-241-21	15481	28		4	1	10/16/97	1,492	0.0660	0.0660	\$1,981.93	\$463.64	\$0.00	\$463.64
814-241-22	15481	27		4	1	10/16/97	1,378	0.0730	0.0730	\$1,981.93	\$463.64	\$0.00	\$463.64
814-241-23	15481	26		4	1	10/16/97	1,622	0.0680	0.0680	\$1,981.93	\$463.64	\$0.00	\$463.64
814-241-24	15481	25		4	1	10/16/97	1,663	0.0650	0.0650	\$1,981.93	\$463.64	\$0.00	\$463.64
814-241-25	15481	24		4	1	10/16/97	1,492	0.0690	0.0690	\$1,981.93	\$463.64	\$0.00	\$463.64
814-241-26	15481	23		4	1	9/8/97	1,622	0.0660	0.0660	\$1,981.93	\$463.64	\$0.00	\$463.64
814-241-27	15481	22		4	1	9/8/97	1,492	0.0600	0.0600	\$1,981.93	\$463.64	\$0.00	\$463.64
814-241-28	15481	21		4	1	9/8/97	1,663	0.0660	0.0660	\$1,981.93	\$463.64	\$0.00	\$463.64
814-241-29	15481	20		4	1	5/19/98	1,622	0.0680	0.0680	\$1,981.93	\$463.64	\$0.00	\$463.64
814-241-30	15481	19		4	1	5/19/98	1,663	0.0600	0.0600	\$1,981.93	\$463.64	\$0.00	\$463.64
814-241-31	15481	46		EX	0		0	0.5530	0.0000	\$0.00	\$0.00	\$0.00	\$0.00
814-241-32	15481	39		4	1	3/12/98	1,378	0.0640	0.0640	\$1,981.93	\$463.64	\$0.00	\$463.64
814-241-33	15481	40		4	1	3/12/98	1,622	0.0860	0.0860	\$1,981.93	\$463.64	\$0.00	\$463.64

COMMUNITY FACILITIES DISTRICT NO. 87-5E
 OF THE COUNTY OF ORANGE
 (RANCHO SANTA MARGARITA)

FISCAL YEAR 2012-13 SPECIAL TAX LEVY

9:30:57AM

ASSESSOR PARCEL NUMBER	TRACT	LOT	UNIT	TAX CLASS	NBR UNITS	PERMIT DATE	BLDG SQ FT	PARCEL ACRES	TAXABLE ACRES	MAXIMUM	STEP 1 SPECIAL TAX	STEP 2 SPECIAL TAX	2012-13 SPECIAL TAX
										TABLE 1/UNDEV SPECIAL TAX			
814-241-34	15481	41		4	1	3/12/98	1,492	0.0710	0.0710	\$1,981.93	\$463.64	\$0.00	\$463.64
814-241-35	15481	42		4	1	3/12/98	1,378	0.0630	0.0630	\$1,981.93	\$463.64	\$0.00	\$463.64
814-241-36	15481	43		4	1	3/12/98	1,492	0.0580	0.0580	\$1,981.93	\$463.64	\$0.00	\$463.64
814-241-37	15481	44		4	1	3/12/98	1,378	0.0630	0.0630	\$1,981.93	\$463.64	\$0.00	\$463.64
814-241-38	15481	45		4	1	3/12/98	1,622	0.0670	0.0670	\$1,981.93	\$463.64	\$0.00	\$463.64
814-241-39	15481	31		4	1	3/12/98	1,622	0.0670	0.0670	\$1,981.93	\$463.64	\$0.00	\$463.64
814-241-40	15481	32		4	1	3/12/98	1,378	0.0640	0.0640	\$1,981.93	\$463.64	\$0.00	\$463.64
814-241-41	15481	33		4	1	3/12/98	1,378	0.0630	0.0630	\$1,981.93	\$463.64	\$0.00	\$463.64
814-241-42	15481	34		4	1	3/12/98	1,492	0.0810	0.0810	\$1,981.93	\$463.64	\$0.00	\$463.64
814-241-43	15481	35		4	1	3/12/98	1,378	0.0840	0.0840	\$1,981.93	\$463.64	\$0.00	\$463.64
814-241-44	15481	36		4	1	3/12/98	1,622	0.1040	0.1040	\$1,981.93	\$463.64	\$0.00	\$463.64
814-241-45	15481	37		4	1	3/12/98	1,622	0.0620	0.0620	\$1,981.93	\$463.64	\$0.00	\$463.64
814-241-46	15481	38		4	1	3/12/98	1,492	0.0610	0.0610	\$1,981.93	\$463.64	\$0.00	\$463.64
814-241-47	15481	A		EX	0		0	0.0730	0.0000	\$0.00	\$0.00	\$0.00	\$0.00
814-241-48	15481	B		EX	0		0	0.1510	0.0000	\$0.00	\$0.00	\$0.00	\$0.00
814-241-49	15481	F		EX	0		0	0.0200	0.0000	\$0.00	\$0.00	\$0.00	\$0.00
814-241-50	15481	E		EX	0		0	0.0540	0.0000	\$0.00	\$0.00	\$0.00	\$0.00
814-241-51	15481	D		EX	0		0	0.0310	0.0000	\$0.00	\$0.00	\$0.00	\$0.00
814-241-52	15481	C		EX	0		0	0.0700	0.0000	\$0.00	\$0.00	\$0.00	\$0.00
814-241-53	15481	L		EX	0		0	0.0650	0.0000	\$0.00	\$0.00	\$0.00	\$0.00
814-241-54	15481	K		EX	0		0	0.0530	0.0000	\$0.00	\$0.00	\$0.00	\$0.00
814-241-55	15481	J		EX	0		0	0.0300	0.0000	\$0.00	\$0.00	\$0.00	\$0.00
814-241-56	15481	I		EX	0		0	0.0500	0.0000	\$0.00	\$0.00	\$0.00	\$0.00
814-241-57	15481	H		EX	0		0	0.0380	0.0000	\$0.00	\$0.00	\$0.00	\$0.00
814-241-58	15481	G		EX	0		0	0.2360	0.0000	\$0.00	\$0.00	\$0.00	\$0.00
814-241-59	15481	M		EX	0		0	0.1500	0.0000	\$0.00	\$0.00	\$0.00	\$0.00
814-241-60	15481	N		EX	0		0	0.0550	0.0000	\$0.00	\$0.00	\$0.00	\$0.00
814-241-61	15481	O		EX	0		0	0.1810	0.0000	\$0.00	\$0.00	\$0.00	\$0.00
814-241-62	15481	X		EX	0		0	0.2550	0.0000	\$0.00	\$0.00	\$0.00	\$0.00
814-241-63	15481	P		EX	0		0	0.1860	0.0000	\$0.00	\$0.00	\$0.00	\$0.00
814-241-64	15481	S		EX	0		0	0.0890	0.0000	\$0.00	\$0.00	\$0.00	\$0.00
814-241-65	15481	Q		EX	0		0	0.0600	0.0000	\$0.00	\$0.00	\$0.00	\$0.00
814-241-66	15481	R		EX	0		0	0.0630	0.0000	\$0.00	\$0.00	\$0.00	\$0.00
814-241-67	15481	T		EX	0		0	0.1190	0.0000	\$0.00	\$0.00	\$0.00	\$0.00
814-241-68	15481	U		EX	0		0	0.1950	0.0000	\$0.00	\$0.00	\$0.00	\$0.00

**COMMUNITY FACILITIES DISTRICT NO. 87-5E
OF THE COUNTY OF ORANGE
(RANCHO SANTA MARGARITA)**

FISCAL YEAR 2012-13 SPECIAL TAX LEVY

9:30:57AM

<u>ASSESSOR PARCEL NUMBER</u>	<u>TRACT</u>	<u>LOT</u>	<u>UNIT</u>	<u>TAX CLASS</u>	<u>NBR UNITS</u>	<u>PERMIT DATE</u>	<u>BLDG SQ FT</u>	<u>PARCEL ACRES</u>	<u>TAXABLE ACRES</u>	<u>MAXIMUM TABLE 1/UNDEV SPECIAL TAX</u>	<u>STEP 1 SPECIAL TAX</u>	<u>STEP 2 SPECIAL TAX</u>	<u>2012-13 SPECIAL TAX</u>
814-241-69	15481	V		EX	0		0	0.0670	0.0000	\$0.00	\$0.00	\$0.00	\$0.00
814-241-70	15481	W		EX	0		0	0.2390	0.0000	\$0.00	\$0.00	\$0.00	\$0.00
814-251-01	15462	38		4	1	10/19/98	1,622	0.0700	0.0700	\$1,981.93	\$463.64	\$0.00	\$463.64
814-251-02	15462	39		4	1	10/19/98	1,492	0.0610	0.0610	\$1,981.93	\$463.64	\$0.00	\$463.64
814-251-03	15462	40		4	1	10/19/98	1,622	0.0620	0.0620	\$1,981.93	\$463.64	\$0.00	\$463.64
814-251-04	15462	41		4	1	10/19/98	1,378	0.0620	0.0620	\$1,981.93	\$463.64	\$0.00	\$463.64
814-251-05	15462	42		4	1	10/19/98	1,622	0.0620	0.0620	\$1,981.93	\$463.64	\$0.00	\$463.64
814-251-06	15462	43		4	1	10/19/98	1,663	0.0620	0.0620	\$1,981.93	\$463.64	\$0.00	\$463.64
814-251-07	15462	44		4	1	10/19/98	1,622	0.0620	0.0620	\$1,981.93	\$463.64	\$0.00	\$463.64
814-251-08	15462	45		4	1	10/19/98	1,663	0.0620	0.0620	\$1,981.93	\$463.64	\$0.00	\$463.64
814-251-09	15462	46		4	1	10/19/98	1,492	0.0590	0.0590	\$1,981.93	\$463.64	\$0.00	\$463.64
814-251-10	15462	47		4	1	10/19/98	1,622	0.0580	0.0580	\$1,981.93	\$463.64	\$0.00	\$463.64
814-251-11	15462	48		4	1	10/19/98	1,492	0.0590	0.0590	\$1,981.93	\$463.64	\$0.00	\$463.64
814-251-12	15462	49		4	1	10/19/98	1,663	0.0640	0.0640	\$1,981.93	\$463.64	\$0.00	\$463.64
814-251-13	15462	50		4	1	10/19/98	1,492	0.0650	0.0650	\$1,981.93	\$463.64	\$0.00	\$463.64
814-251-14	15462	51		4	1	10/19/98	1,622	0.0670	0.0670	\$1,981.93	\$463.64	\$0.00	\$463.64
814-251-15	15462	37		4	1	10/19/98	1,378	0.0630	0.0630	\$1,981.93	\$463.64	\$0.00	\$463.64
814-251-16	15462	36		4	1	10/19/98	1,378	0.0660	0.0660	\$1,981.93	\$463.64	\$0.00	\$463.64
814-251-17	15462	35		4	1	10/19/98	1,492	0.0630	0.0630	\$1,981.93	\$463.64	\$0.00	\$463.64
814-251-18	15462	34		4	1	10/19/98	1,378	0.0580	0.0580	\$1,981.93	\$463.64	\$0.00	\$463.64
814-251-19	15462	33		4	1	10/19/98	1,622	0.0650	0.0650	\$1,981.93	\$463.64	\$0.00	\$463.64
814-251-20	15462	32		4	1	10/19/98	1,492	0.0630	0.0630	\$1,981.93	\$463.64	\$0.00	\$463.64
814-251-21	15462	31		4	1	10/19/98	1,622	0.0590	0.0590	\$1,981.93	\$463.64	\$0.00	\$463.64
814-251-22	15462	30		4	1	10/19/98	1,378	0.0650	0.0650	\$1,981.93	\$463.64	\$0.00	\$463.64
814-251-23	15462	29		4	1	11/9/98	1,622	0.0640	0.0640	\$1,981.93	\$463.64	\$0.00	\$463.64
814-251-24	15462	28		4	1	11/9/98	1,492	0.0560	0.0560	\$1,981.93	\$463.64	\$0.00	\$463.64
814-251-25	15462	27		4	1	11/9/98	1,663	0.0570	0.0570	\$1,981.93	\$463.64	\$0.00	\$463.64
814-251-26	15462	26		4	1	11/9/98	1,622	0.0710	0.0710	\$1,981.93	\$463.64	\$0.00	\$463.64
814-251-27	15462	25		4	1	11/9/98	1,378	0.0590	0.0590	\$1,981.93	\$463.64	\$0.00	\$463.64
814-251-28	15462	24		4	1	11/9/98	1,492	0.0630	0.0630	\$1,981.93	\$463.64	\$0.00	\$463.64
814-251-29	15462	23		4	1	11/9/98	1,378	0.0610	0.0610	\$1,981.93	\$463.64	\$0.00	\$463.64
814-251-30	15462	22		4	1	11/9/98	1,378	0.0780	0.0780	\$1,981.93	\$463.64	\$0.00	\$463.64
814-251-31	15462	21		4	1	4/6/99	1,378	0.0620	0.0620	\$1,981.93	\$463.64	\$0.00	\$463.64
814-251-32	15462	20		4	1	4/6/99	1,492	0.0610	0.0610	\$1,981.93	\$463.64	\$0.00	\$463.64
814-251-33	15462	19		4	1	4/6/99	1,622	0.0680	0.0680	\$1,981.93	\$463.64	\$0.00	\$463.64

COMMUNITY FACILITIES DISTRICT NO. 87-5E
 OF THE COUNTY OF ORANGE
 (RANCHO SANTA MARGARITA)

FISCAL YEAR 2012-13 SPECIAL TAX LEVY

9:30:57AM

ASSESSOR PARCEL NUMBER	TRACT	LOT	UNIT	TAX CLASS	NBR UNITS	PERMIT DATE	BLDG SQ FT	PARCEL ACRES	TAXABLE ACRES	MAXIMUM	STEP 1 SPECIAL TAX	STEP 2 SPECIAL TAX	2012-13 SPECIAL TAX
										TABLE 1/UNDEV SPECIAL TAX			
814-251-34	15462	18		4	1	11/9/98	1,622	0.0650	0.0650	\$1,981.93	\$463.64	\$0.00	\$463.64
814-251-35	15462	17		4	1	11/9/98	1,378	0.0610	0.0610	\$1,981.93	\$463.64	\$0.00	\$463.64
814-251-36	15462	16		4	1	11/9/98	1,492	0.0610	0.0610	\$1,981.93	\$463.64	\$0.00	\$463.64
814-251-37	15462	15		4	1	11/9/98	1,622	0.0610	0.0610	\$1,981.93	\$463.64	\$0.00	\$463.64
814-251-38	15462	14		4	1	11/9/98	1,622	0.0600	0.0600	\$1,981.93	\$463.64	\$0.00	\$463.64
814-251-39	15462	13		4	1	11/9/98	1,492	0.0590	0.0590	\$1,981.93	\$463.64	\$0.00	\$463.64
814-251-40	15462	12		4	1	11/9/98	1,622	0.0590	0.0590	\$1,981.93	\$463.64	\$0.00	\$463.64
814-251-41	15462	11		4	1	11/9/98	1,378	0.0590	0.0590	\$1,981.93	\$463.64	\$0.00	\$463.64
814-251-42	15462	10		4	1	11/9/98	1,492	0.0710	0.0710	\$1,981.93	\$463.64	\$0.00	\$463.64
814-251-43	15462	9		4	1	11/9/98	1,622	0.0630	0.0630	\$1,981.93	\$463.64	\$0.00	\$463.64
814-251-44	15462	8		4	1	11/9/98	1,663	0.0640	0.0640	\$1,981.93	\$463.64	\$0.00	\$463.64
814-251-45	15462	7		4	1	11/9/98	1,492	0.0650	0.0650	\$1,981.93	\$463.64	\$0.00	\$463.64
814-251-46	15462	6		4	1	11/9/98	1,622	0.0780	0.0780	\$1,981.93	\$463.64	\$0.00	\$463.64
814-251-47	15462	5		4	1	11/9/98	1,492	0.0740	0.0740	\$1,981.93	\$463.64	\$0.00	\$463.64
814-251-48	15462	4		4	1	11/9/98	1,378	0.0630	0.0630	\$1,981.93	\$463.64	\$0.00	\$463.64
814-251-49	15462	3		4	1	11/9/98	1,492	0.0610	0.0610	\$1,981.93	\$463.64	\$0.00	\$463.64
814-251-50	15462	2		4	1	11/9/98	1,622	0.0600	0.0600	\$1,981.93	\$463.64	\$0.00	\$463.64
814-251-51	15462	1		4	1	11/9/98	1,378	0.0610	0.0610	\$1,981.93	\$463.64	\$0.00	\$463.64
814-251-52	15462	A		EX	0		0	0.2700	0.0000	\$0.00	\$0.00	\$0.00	\$0.00
814-251-53	15462	B		EX	0		0	0.1170	0.0000	\$0.00	\$0.00	\$0.00	\$0.00
814-251-54	15462	R		EX	0		0	0.0780	0.0000	\$0.00	\$0.00	\$0.00	\$0.00
814-251-55	15462	S		EX	0		0	0.1310	0.0000	\$0.00	\$0.00	\$0.00	\$0.00
814-251-56	15462	D		EX	0		0	0.0520	0.0000	\$0.00	\$0.00	\$0.00	\$0.00
814-251-57	15462	C		EX	0		0	0.0480	0.0000	\$0.00	\$0.00	\$0.00	\$0.00
814-251-58	15462	U		EX	0		0	0.2110	0.0000	\$0.00	\$0.00	\$0.00	\$0.00
814-251-59	15462	Q		EX	0		0	0.0760	0.0000	\$0.00	\$0.00	\$0.00	\$0.00
814-251-60	15462	E		EX	0		0	0.0850	0.0000	\$0.00	\$0.00	\$0.00	\$0.00
814-251-61	15462	T		EX	0		0	0.2150	0.0000	\$0.00	\$0.00	\$0.00	\$0.00
814-251-62	15462	J		EX	0		0	0.1100	0.0000	\$0.00	\$0.00	\$0.00	\$0.00
814-251-63	15462	K		EX	0		0	0.1140	0.0000	\$0.00	\$0.00	\$0.00	\$0.00
814-251-64	15462	I		EX	0		0	0.0150	0.0000	\$0.00	\$0.00	\$0.00	\$0.00
814-251-65	15462	L		EX	0		0	0.1100	0.0000	\$0.00	\$0.00	\$0.00	\$0.00
814-251-66	15462	P		EX	0		0	0.0760	0.0000	\$0.00	\$0.00	\$0.00	\$0.00
814-251-67	15462	F		EX	0		0	0.0600	0.0000	\$0.00	\$0.00	\$0.00	\$0.00
814-251-68	15462	H		EX	0		0	0.0680	0.0000	\$0.00	\$0.00	\$0.00	\$0.00

COMMUNITY FACILITIES DISTRICT NO. 87-5E
 OF THE COUNTY OF ORANGE
 (RANCHO SANTA MARGARITA)

FISCAL YEAR 2012-13 SPECIAL TAX LEVY

9:30:57AM

ASSESSOR PARCEL NUMBER	TRACT	LOT	UNIT	TAX CLASS	NBR UNITS	PERMIT DATE	BLDG SQ FT	PARCEL ACRES	TAXABLE ACRES	MAXIMUM	STEP 1 SPECIAL TAX	STEP 2 SPECIAL TAX	2012-13 SPECIAL TAX
										TABLE 1/UNDEV SPECIAL TAX			
814-251-69	15462	O		EX	0		0	0.0790	0.0000	\$0.00	\$0.00	\$0.00	\$0.00
814-251-70	15462	M		EX	0		0	0.1370	0.0000	\$0.00	\$0.00	\$0.00	\$0.00
814-251-71	15462	N		EX	0		0	0.0500	0.0000	\$0.00	\$0.00	\$0.00	\$0.00
814-251-72	15462	G		EX	0		0	0.0410	0.0000	\$0.00	\$0.00	\$0.00	\$0.00
814-261-08	15583	8		EX	0		0	0.3640	0.0000	\$0.00	\$0.00	\$0.00	\$0.00
814-261-09	15583	A		EX	0		0	0.2310	0.0000	\$0.00	\$0.00	\$0.00	\$0.00
814-261-10	15583	B		EX	0		0	0.2710	0.0000	\$0.00	\$0.00	\$0.00	\$0.00
814-261-11	15583	C		EX	0		0	0.0480	0.0000	\$0.00	\$0.00	\$0.00	\$0.00
814-261-12	15583	D		EX	0		0	0.0330	0.0000	\$0.00	\$0.00	\$0.00	\$0.00
814-261-13	15583	E		EX	0		0	0.0790	0.0000	\$0.00	\$0.00	\$0.00	\$0.00
814-261-14	15583	F		EX	0		0	0.2680	0.0000	\$0.00	\$0.00	\$0.00	\$0.00
814-261-15	15583	G		EX	0		0	0.0780	0.0000	\$0.00	\$0.00	\$0.00	\$0.00
814-261-16	15583	H		EX	0		0	0.0950	0.0000	\$0.00	\$0.00	\$0.00	\$0.00
814-261-17	15583			EX	0		0	8.5390	0.0000	\$0.00	\$0.00	\$0.00	\$0.00
833-681-01	14057	POR 1		EX	0		0	16.8690	0.0000	\$0.00	\$0.00	\$0.00	\$0.00
833-681-02	14057	POR 1		EX	0		0	2.3410	0.0000	\$0.00	\$0.00	\$0.00	\$0.00
833-681-03	14057	A		EX	0		0	0.6010	0.0000	\$0.00	\$0.00	\$0.00	\$0.00
833-681-04	14057	B		EX	0		0	0.0540	0.0000	\$0.00	\$0.00	\$0.00	\$0.00
833-681-05	14057	POR C		EX	0		0	0.0470	0.0000	\$0.00	\$0.00	\$0.00	\$0.00
833-681-06	14057	POR C		EX	0		0	0.0880	0.0000	\$0.00	\$0.00	\$0.00	\$0.00
930-218-69	14910	8	82	8	1	1/17/95	1,251	0.0530	0.0530	\$1,529.83	\$357.88	\$0.00	\$357.88
930-218-70	14910	8	83	9	1	1/17/95	870	0.0530	0.0530	\$1,132.53	\$264.94	\$0.00	\$264.94
930-218-71	14910	8	84	9	1	1/17/95	1,175	0.0530	0.0530	\$1,132.53	\$264.94	\$0.00	\$264.94
930-218-72	14910	8	85	9	1	1/17/95	913	0.0530	0.0530	\$1,132.53	\$264.94	\$0.00	\$264.94
930-218-73	14910	8	86	9	1	1/17/95	913	0.0530	0.0530	\$1,132.53	\$264.94	\$0.00	\$264.94
930-218-74	14910	8	87	9	1	1/17/95	1,175	0.0530	0.0530	\$1,132.53	\$264.94	\$0.00	\$264.94
930-218-75	14910	8	88	9	1	1/17/95	870	0.0530	0.0530	\$1,132.53	\$264.94	\$0.00	\$264.94
930-218-76	14910	8	89	8	1	1/17/95	1,251	0.0530	0.0530	\$1,529.83	\$357.88	\$0.00	\$357.88
930-218-77	14910	9	90	8	1	1/17/95	1,251	0.0540	0.0540	\$1,529.83	\$357.88	\$0.00	\$357.88
930-218-78	14910	9	91	9	1	1/17/95	870	0.0540	0.0540	\$1,132.53	\$264.94	\$0.00	\$264.94
930-218-79	14910	9	92	9	1	1/17/95	1,175	0.0540	0.0540	\$1,132.53	\$264.94	\$0.00	\$264.94
930-218-80	14910	9	93	9	1	1/17/95	913	0.0540	0.0540	\$1,132.53	\$264.94	\$0.00	\$264.94
930-218-81	14910	9	94	9	1	1/17/95	913	0.0540	0.0540	\$1,132.53	\$264.94	\$0.00	\$264.94
930-218-82	14910	9	95	9	1	1/17/95	1,175	0.0540	0.0540	\$1,132.53	\$264.94	\$0.00	\$264.94
930-218-83	14910	9	96	9	1	1/17/95	870	0.0540	0.0540	\$1,132.53	\$264.94	\$0.00	\$264.94

**COMMUNITY FACILITIES DISTRICT NO. 87-5E
OF THE COUNTY OF ORANGE
(RANCHO SANTA MARGARITA)**

FISCAL YEAR 2012-13 SPECIAL TAX LEVY

9:30:57AM

ASSESSOR PARCEL NUMBER	TRACT	LOT	UNIT	TAX CLASS	NBR UNITS	PERMIT DATE	BLDG SQ FT	PARCEL ACRES	TAXABLE ACRES	MAXIMUM TABLE 1/UNDEV SPECIAL TAX	STEP 1 SPECIAL TAX	STEP 2 SPECIAL TAX	2012-13 SPECIAL TAX
930-218-84	14910	9	97	8	1	1/17/95	1,251	0.0540	0.0540	\$1,529.83	\$357.88	\$0.00	\$357.88
930-218-85	14910	10	98	8	1	1/17/95	1,251	0.0530	0.0530	\$1,529.83	\$357.88	\$0.00	\$357.88
930-218-86	14910	10	99	9	1	1/17/95	870	0.0530	0.0530	\$1,132.53	\$264.94	\$0.00	\$264.94
930-218-87	14910	10	100	9	1	1/17/95	1,175	0.0530	0.0530	\$1,132.53	\$264.94	\$0.00	\$264.94
930-218-88	14910	10	101	9	1	1/17/95	913	0.0530	0.0530	\$1,132.53	\$264.94	\$0.00	\$264.94
930-218-89	14910	10	102	9	1	1/17/95	913	0.0530	0.0530	\$1,132.53	\$264.94	\$0.00	\$264.94
930-218-90	14910	10	103	9	1	1/17/95	1,175	0.0530	0.0530	\$1,132.53	\$264.94	\$0.00	\$264.94
930-218-91	14910	10	104	9	1	1/17/95	870	0.0530	0.0530	\$1,132.53	\$264.94	\$0.00	\$264.94
930-218-92	14910	10	105	8	1	1/17/95	1,251	0.0530	0.0530	\$1,529.83	\$357.88	\$0.00	\$357.88
930-218-93	14910	11	106	8	1	1/31/95	1,251	0.0510	0.0510	\$1,529.83	\$357.88	\$0.00	\$357.88
930-218-94	14910	11	107	9	1	1/31/95	870	0.0510	0.0510	\$1,132.53	\$264.94	\$0.00	\$264.94
930-218-95	14910	11	108	9	1	1/31/95	1,175	0.0510	0.0510	\$1,132.53	\$264.94	\$0.00	\$264.94
930-218-96	14910	11	109	9	1	1/31/95	913	0.0510	0.0510	\$1,132.53	\$264.94	\$0.00	\$264.94
930-218-97	14910	11	110	9	1	1/31/95	913	0.0510	0.0510	\$1,132.53	\$264.94	\$0.00	\$264.94
930-218-98	14910	11	111	9	1	1/31/95	1,175	0.0510	0.0510	\$1,132.53	\$264.94	\$0.00	\$264.94
930-218-99	14910	11	112	9	1	1/31/95	870	0.0510	0.0510	\$1,132.53	\$264.94	\$0.00	\$264.94
930-219-00	14910	11	113	8	1	1/31/95	1,251	0.0510	0.0510	\$1,529.83	\$357.88	\$0.00	\$357.88
930-219-01	14910	12	114	8	1	1/31/95	1,251	0.0510	0.0510	\$1,529.83	\$357.88	\$0.00	\$357.88
930-219-02	14910	12	115	9	1	1/31/95	870	0.0510	0.0510	\$1,132.53	\$264.94	\$0.00	\$264.94
930-219-03	14910	12	116	9	1	1/31/95	1,175	0.0510	0.0510	\$1,132.53	\$264.94	\$0.00	\$264.94
930-219-04	14910	12	117	9	1	1/31/95	913	0.0510	0.0510	\$1,132.53	\$264.94	\$0.00	\$264.94
930-219-05	14910	12	118	9	1	1/31/95	913	0.0510	0.0510	\$1,132.53	\$264.94	\$0.00	\$264.94
930-219-06	14910	12	119	9	1	1/31/95	1,175	0.0510	0.0510	\$1,132.53	\$264.94	\$0.00	\$264.94
930-219-07	14910	12	120	9	1	1/31/95	870	0.0510	0.0510	\$1,132.53	\$264.94	\$0.00	\$264.94
930-219-08	14910	12	121	8	1	1/31/95	1,251	0.0510	0.0510	\$1,529.83	\$357.88	\$0.00	\$357.88
930-219-09	14910	6	155	9	1	1/31/95	1,119	0.0610	0.0610	\$1,132.53	\$264.94	\$0.00	\$264.94
930-219-10	14910	6	156	8	1	1/31/95	1,344	0.0610	0.0610	\$1,529.83	\$357.88	\$0.00	\$357.88
930-219-11	14910	6	157	8	1	1/31/95	1,252	0.0610	0.0610	\$1,529.83	\$357.88	\$0.00	\$357.88
930-219-12	14910	6	158	8	1	1/31/95	1,344	0.0610	0.0610	\$1,529.83	\$357.88	\$0.00	\$357.88
930-219-13	14910	6	159	9	1	1/31/95	1,119	0.0610	0.0610	\$1,132.53	\$264.94	\$0.00	\$264.94
930-219-14	14910	6	160	8	1	1/31/95	1,344	0.0610	0.0610	\$1,529.83	\$357.88	\$0.00	\$357.88
930-219-15	14910	6	161	9	1	1/31/95	1,119	0.0610	0.0610	\$1,132.53	\$264.94	\$0.00	\$264.94
930-219-16	14910	6	162	8	1	1/31/95	1,474	0.0610	0.0610	\$1,529.83	\$357.88	\$0.00	\$357.88
930-219-17	14910	7	163	8	1	1/17/95	1,474	0.0570	0.0570	\$1,529.83	\$357.88	\$0.00	\$357.88
930-219-18	14910	7	164	9	1	1/17/95	1,119	0.0570	0.0570	\$1,132.53	\$264.94	\$0.00	\$264.94

**COMMUNITY FACILITIES DISTRICT NO. 87-5E
OF THE COUNTY OF ORANGE
(RANCHO SANTA MARGARITA)**

FISCAL YEAR 2012-13 SPECIAL TAX LEVY

9:30:57AM

ASSESSOR PARCEL NUMBER	TRACT	LOT	UNIT	TAX CLASS	NBR UNITS	PERMIT DATE	BLDG SQ FT	PARCEL ACRES	TAXABLE ACRES	MAXIMUM	STEP 1	STEP 2	2012-13
										TABLE 1/UNDEV SPECIAL TAX	SPECIAL TAX	SPECIAL TAX	SPECIAL TAX
930-219-19	14910	7	165	8	1	1/17/95	1,252	0.0570	0.0570	\$1,529.83	\$357.88	\$0.00	\$357.88
930-219-20	14910	1	122	8	1	10/2/95	1,251	0.0555	0.0555	\$1,529.83	\$357.88	\$0.00	\$357.88
930-219-21	14910	1	123	9	1	10/2/95	870	0.0555	0.0555	\$1,132.53	\$264.94	\$0.00	\$264.94
930-219-22	14910	1	124	9	1	10/2/95	1,175	0.0555	0.0555	\$1,132.53	\$264.94	\$0.00	\$264.94
930-219-23	14910	1	125	9	1	10/2/95	913	0.0555	0.0555	\$1,132.53	\$264.94	\$0.00	\$264.94
930-219-24	14910	1	126	9	1	10/2/95	913	0.0555	0.0555	\$1,132.53	\$264.94	\$0.00	\$264.94
930-219-25	14910	1	127	9	1	10/2/95	1,175	0.0555	0.0555	\$1,132.53	\$264.94	\$0.00	\$264.94
930-219-26	14910	1	128	9	1	10/2/95	870	0.0555	0.0555	\$1,132.53	\$264.94	\$0.00	\$264.94
930-219-27	14910	1	129	8	1	10/2/95	1,251	0.0555	0.0555	\$1,529.83	\$357.88	\$0.00	\$357.88
930-219-28	14910	2	130	8	1	11/15/95	1,251	0.0564	0.0564	\$1,529.83	\$357.88	\$0.00	\$357.88
930-219-29	14910	2	131	9	1	11/15/95	870	0.0564	0.0564	\$1,132.53	\$264.94	\$0.00	\$264.94
930-219-30	14910	2	132	9	1	11/15/95	1,175	0.0564	0.0564	\$1,132.53	\$264.94	\$0.00	\$264.94
930-219-31	14910	2	133	9	1	11/15/95	913	0.0564	0.0564	\$1,132.53	\$264.94	\$0.00	\$264.94
930-219-32	14910	2	134	9	1	11/15/95	913	0.0564	0.0564	\$1,132.53	\$264.94	\$0.00	\$264.94
930-219-33	14910	2	135	9	1	11/15/95	1,175	0.0564	0.0564	\$1,132.53	\$264.94	\$0.00	\$264.94
930-219-34	14910	2	136	9	1	11/15/95	870	0.0564	0.0564	\$1,132.53	\$264.94	\$0.00	\$264.94
930-219-35	14910	2	137	8	1	11/15/95	1,251	0.0564	0.0564	\$1,529.83	\$357.88	\$0.00	\$357.88
930-219-36	14910	3	138	9	1	11/15/95	1,119	0.0510	0.0510	\$1,132.53	\$264.94	\$0.00	\$264.94
930-219-37	14910	3	139	9	1	10/2/95	1,119	0.0510	0.0510	\$1,132.53	\$264.94	\$0.00	\$264.94
930-219-38	14910	3	140	8	1	10/2/95	1,474	0.0510	0.0510	\$1,529.83	\$357.88	\$0.00	\$357.88
930-219-39	14910	4	141	8	1	10/2/95	1,474	0.0546	0.0546	\$1,529.83	\$357.88	\$0.00	\$357.88
930-219-40	14910	4	142	9	1	10/2/95	1,119	0.0546	0.0546	\$1,132.53	\$264.94	\$0.00	\$264.94
930-219-41	14910	4	143	8	1	10/2/95	1,344	0.0546	0.0546	\$1,529.83	\$357.88	\$0.00	\$357.88
930-219-42	14910	4	144	8	1	10/2/95	1,252	0.0546	0.0546	\$1,529.83	\$357.88	\$0.00	\$357.88
930-219-43	14910	4	145	8	1	10/2/95	1,344	0.0546	0.0546	\$1,529.83	\$357.88	\$0.00	\$357.88
930-219-44	14910	4	146	9	1	10/2/95	1,119	0.0546	0.0546	\$1,132.53	\$264.94	\$0.00	\$264.94
930-219-45	14910	4	147	8	1	10/2/95	1,474	0.0546	0.0546	\$1,529.83	\$357.88	\$0.00	\$357.88
930-219-46	14910	5	148	8	1	10/2/95	1,474	0.0541	0.0541	\$1,529.83	\$357.88	\$0.00	\$357.88
930-219-47	14910	5	149	9	1	10/2/95	1,119	0.0541	0.0541	\$1,132.53	\$264.94	\$0.00	\$264.94
930-219-48	14910	5	150	8	1	10/2/95	1,344	0.0541	0.0541	\$1,529.83	\$357.88	\$0.00	\$357.88
930-219-49	14910	5	151	8	1	10/2/95	1,252	0.0541	0.0541	\$1,529.83	\$357.88	\$0.00	\$357.88
930-219-50	14910	5	152	8	1	10/2/95	1,344	0.0541	0.0541	\$1,529.83	\$357.88	\$0.00	\$357.88
930-219-51	14910	5	153	9	1	10/2/95	1,119	0.0541	0.0541	\$1,132.53	\$264.94	\$0.00	\$264.94
930-219-52	14910	5	154	8	1	10/2/95	1,474	0.0541	0.0541	\$1,529.83	\$357.88	\$0.00	\$357.88
930-274-07	14909	1	166	8	1	7/26/96	1,251	0.0603	0.0603	\$1,529.83	\$357.88	\$0.00	\$357.88

**COMMUNITY FACILITIES DISTRICT NO. 87-5E
OF THE COUNTY OF ORANGE
(RANCHO SANTA MARGARITA)**

FISCAL YEAR 2012-13 SPECIAL TAX LEVY

9:30:57AM

ASSESSOR PARCEL NUMBER	TRACT	LOT	UNIT	TAX CLASS	NBR UNITS	PERMIT DATE	BLDG SQ FT	PARCEL ACRES	TAXABLE ACRES	MAXIMUM	STEP 1	STEP 2	2012-13
										TABLE 1/UNDEV SPECIAL TAX	SPECIAL TAX	SPECIAL TAX	SPECIAL TAX
930-274-08	14909	1	167	9	1	7/26/96	870	0.0603	0.0603	\$1,132.53	\$264.94	\$0.00	\$264.94
930-274-09	14909	1	168	9	1	7/26/96	1,175	0.0603	0.0603	\$1,132.53	\$264.94	\$0.00	\$264.94
930-274-10	14909	1	169	9	1	7/26/96	913	0.0603	0.0603	\$1,132.53	\$264.94	\$0.00	\$264.94
930-274-11	14909	1	170	9	1	7/26/96	913	0.0603	0.0603	\$1,132.53	\$264.94	\$0.00	\$264.94
930-274-12	14909	1	171	9	1	7/26/96	1,175	0.0603	0.0603	\$1,132.53	\$264.94	\$0.00	\$264.94
930-274-13	14909	1	172	9	1	7/26/96	870	0.0603	0.0603	\$1,132.53	\$264.94	\$0.00	\$264.94
930-274-14	14909	1	173	8	1	7/26/96	1,251	0.0603	0.0603	\$1,529.83	\$357.88	\$0.00	\$357.88
930-274-15	14909	2	174	8	1	7/26/96	1,251	0.0628	0.0628	\$1,529.83	\$357.88	\$0.00	\$357.88
930-274-16	14909	2	175	9	1	7/26/96	870	0.0628	0.0628	\$1,132.53	\$264.94	\$0.00	\$264.94
930-274-17	14909	2	176	9	1	7/26/96	1,175	0.0628	0.0628	\$1,132.53	\$264.94	\$0.00	\$264.94
930-274-18	14909	2	177	9	1	7/26/96	913	0.0628	0.0628	\$1,132.53	\$264.94	\$0.00	\$264.94
930-274-19	14909	2	178	9	1	7/26/96	913	0.0628	0.0628	\$1,132.53	\$264.94	\$0.00	\$264.94
930-274-20	14909	2	179	9	1	7/26/96	1,175	0.0628	0.0628	\$1,132.53	\$264.94	\$0.00	\$264.94
930-274-21	14909	2	180	9	1	7/26/96	870	0.0628	0.0628	\$1,132.53	\$264.94	\$0.00	\$264.94
930-274-22	14909	2	181	8	1	7/26/96	1,251	0.0628	0.0628	\$1,529.83	\$357.88	\$0.00	\$357.88
930-274-23	14909	2	182	9	1	7/26/96	913	0.0628	0.0628	\$1,132.53	\$264.94	\$0.00	\$264.94
930-274-24	14909	2	183	9	1	7/26/96	1,175	0.0628	0.0628	\$1,132.53	\$264.94	\$0.00	\$264.94
930-274-25	14909	2	184	9	1	7/26/96	870	0.0628	0.0628	\$1,132.53	\$264.94	\$0.00	\$264.94
930-274-26	14909	2	185	8	1	7/26/96	1,251	0.0628	0.0628	\$1,529.83	\$357.88	\$0.00	\$357.88
930-274-27	14909	3	186	8	1	8/29/96	1,251	0.0530	0.0530	\$1,529.83	\$357.88	\$0.00	\$357.88
930-274-28	14909	3	187	9	1	8/29/96	870	0.0530	0.0530	\$1,132.53	\$264.94	\$0.00	\$264.94
930-274-29	14909	3	188	9	1	8/29/96	1,175	0.0530	0.0530	\$1,132.53	\$264.94	\$0.00	\$264.94
930-274-30	14909	3	189	9	1	8/29/96	913	0.0530	0.0530	\$1,132.53	\$264.94	\$0.00	\$264.94
930-274-31	14909	3	190	9	1	8/29/96	913	0.0530	0.0530	\$1,132.53	\$264.94	\$0.00	\$264.94
930-274-32	14909	3	191	9	1	8/29/96	1,175	0.0530	0.0530	\$1,132.53	\$264.94	\$0.00	\$264.94
930-274-33	14909	3	192	9	1	8/29/96	870	0.0530	0.0530	\$1,132.53	\$264.94	\$0.00	\$264.94
930-274-34	14909	3	193	8	1	8/29/96	1,251	0.0530	0.0530	\$1,529.83	\$357.88	\$0.00	\$357.88
930-274-35	14909	4	194	8	1	8/29/96	1,251	0.0553	0.0553	\$1,529.83	\$357.88	\$0.00	\$357.88
930-274-36	14909	4	195	9	1	8/29/96	870	0.0553	0.0553	\$1,132.53	\$264.94	\$0.00	\$264.94
930-274-37	14909	4	196	9	1	8/29/96	1,175	0.0553	0.0553	\$1,132.53	\$264.94	\$0.00	\$264.94
930-274-38	14909	4	197	9	1	8/29/96	913	0.0553	0.0553	\$1,132.53	\$264.94	\$0.00	\$264.94
930-274-39	14909	4	198	9	1	8/29/96	913	0.0553	0.0553	\$1,132.53	\$264.94	\$0.00	\$264.94
930-274-40	14909	4	199	9	1	8/29/96	1,175	0.0553	0.0553	\$1,132.53	\$264.94	\$0.00	\$264.94
930-274-41	14909	4	200	9	1	8/29/96	870	0.0553	0.0553	\$1,132.53	\$264.94	\$0.00	\$264.94
930-274-42	14909	4	201	8	1	8/29/96	1,251	0.0553	0.0553	\$1,529.83	\$357.88	\$0.00	\$357.88

**COMMUNITY FACILITIES DISTRICT NO. 87-5E
OF THE COUNTY OF ORANGE
(RANCHO SANTA MARGARITA)**

FISCAL YEAR 2012-13 SPECIAL TAX LEVY

9:30:57AM

<u>ASSESSOR PARCEL NUMBER</u>	<u>TRACT</u>	<u>LOT</u>	<u>UNIT</u>	<u>TAX CLASS</u>	<u>NBR UNITS</u>	<u>PERMIT DATE</u>	<u>BLDG SQ FT</u>	<u>PARCEL ACRES</u>	<u>TAXABLE ACRES</u>	<u>MAXIMUM TABLE 1/UNDEV SPECIAL TAX</u>	<u>STEP 1 SPECIAL TAX</u>	<u>STEP 2 SPECIAL TAX</u>	<u>2012-13 SPECIAL TAX</u>
930-274-43	14909	5	202	8	1	8/29/96	1,251	0.0563	0.0563	\$1,529.83	\$357.88	\$0.00	\$357.88
930-274-44	14909	5	203	9	1	8/29/96	870	0.0563	0.0563	\$1,132.53	\$264.94	\$0.00	\$264.94
930-274-45	14909	5	204	9	1	8/29/96	1,175	0.0563	0.0563	\$1,132.53	\$264.94	\$0.00	\$264.94
930-274-46	14909	5	205	9	1	8/29/96	913	0.0563	0.0563	\$1,132.53	\$264.94	\$0.00	\$264.94
930-274-47	14909	5	206	9	1	8/29/96	913	0.0563	0.0563	\$1,132.53	\$264.94	\$0.00	\$264.94
930-274-48	14909	5	207	9	1	8/29/96	1,175	0.0563	0.0563	\$1,132.53	\$264.94	\$0.00	\$264.94
930-274-49	14909	5	208	9	1	8/29/96	870	0.0563	0.0563	\$1,132.53	\$264.94	\$0.00	\$264.94
930-274-50	14909	5	209	8	1	8/29/96	1,251	0.0563	0.0563	\$1,529.83	\$357.88	\$0.00	\$357.88
930-275-66	15583	1	1	8	1	10/26/98	1,427	0.0694	0.0526	\$1,529.83	\$357.88	\$0.00	\$357.88
930-275-67	15583	1	2	8	1	10/26/98	1,329	0.0694	0.0526	\$1,529.83	\$357.88	\$0.00	\$357.88
930-275-68	15583	1	3	8	1	10/26/98	1,240	0.0694	0.0526	\$1,529.83	\$357.88	\$0.00	\$357.88
930-275-69	15583	1	4	8	1	10/26/98	1,484	0.0694	0.0526	\$1,529.83	\$357.88	\$0.00	\$357.88
930-275-70	15583	1	5	8	1	10/26/98	1,484	0.0694	0.0526	\$1,529.83	\$357.88	\$0.00	\$357.88
930-275-71	15583	1	6	8	1	10/26/98	1,329	0.0694	0.0526	\$1,529.83	\$357.88	\$0.00	\$357.88
930-275-72	15583	1	7	8	1	10/26/98	1,427	0.0694	0.0526	\$1,529.83	\$357.88	\$0.00	\$357.88
930-275-73	15583	1	8	8	1	10/26/98	1,484	0.0694	0.0526	\$1,529.83	\$357.88	\$0.00	\$357.88
930-275-74	15583	1	9	8	1	10/26/98	1,329	0.0694	0.0526	\$1,529.83	\$357.88	\$0.00	\$357.88
930-275-75	15583	1	10	8	1	10/26/98	1,427	0.0694	0.0526	\$1,529.83	\$357.88	\$0.00	\$357.88
930-275-76	15583	1	11	8	1	10/26/98	1,427	0.0694	0.0526	\$1,529.83	\$357.88	\$0.00	\$357.88
930-275-77	15583	1	12	8	1	10/26/98	1,329	0.0694	0.0526	\$1,529.83	\$357.88	\$0.00	\$357.88
930-275-78	15583	1	13	8	1	10/26/98	1,240	0.0694	0.0526	\$1,529.83	\$357.88	\$0.00	\$357.88
930-275-79	15583	1	14	8	1	10/26/98	1,484	0.0694	0.0526	\$1,529.83	\$357.88	\$0.00	\$357.88
930-275-80	15583	1	15	8	1	10/26/98	1,427	0.0694	0.0526	\$1,529.83	\$357.88	\$0.00	\$357.88
930-275-81	15583	1	16	8	1	10/26/98	1,329	0.0694	0.0526	\$1,529.83	\$357.88	\$0.00	\$357.88
930-275-82	15583	1	17	8	1	10/26/98	1,240	0.0694	0.0526	\$1,529.83	\$357.88	\$0.00	\$357.88
930-275-83	15583	1	18	8	1	10/26/98	1,484	0.0694	0.0526	\$1,529.83	\$357.88	\$0.00	\$357.88
930-275-84	15583	1	19	8	1	10/26/98	1,427	0.0694	0.0526	\$1,529.83	\$357.88	\$0.00	\$357.88
930-275-85	15583	1	20	8	1	10/26/98	1,329	0.0694	0.0526	\$1,529.83	\$357.88	\$0.00	\$357.88
930-275-86	15583	1	21	8	1	10/26/98	1,240	0.0694	0.0526	\$1,529.83	\$357.88	\$0.00	\$357.88
930-275-87	15583	1	22	8	1	10/26/98	1,484	0.0694	0.0526	\$1,529.83	\$357.88	\$0.00	\$357.88
930-275-88	15583	2	23	8	1	12/9/98	1,484	0.0659	0.0511	\$1,529.83	\$357.88	\$0.00	\$357.88
930-275-89	15583	2	24	8	1	12/9/98	1,240	0.0659	0.0511	\$1,529.83	\$357.88	\$0.00	\$357.88
930-275-90	15583	2	25	8	1	12/9/98	1,329	0.0659	0.0511	\$1,529.83	\$357.88	\$0.00	\$357.88
930-275-91	15583	2	26	8	1	12/9/98	1,329	0.0659	0.0511	\$1,529.83	\$357.88	\$0.00	\$357.88
930-275-92	15583	2	27	8	1	12/9/98	1,427	0.0659	0.0511	\$1,529.83	\$357.88	\$0.00	\$357.88

**COMMUNITY FACILITIES DISTRICT NO. 87-5E
OF THE COUNTY OF ORANGE
(RANCHO SANTA MARGARITA)**

FISCAL YEAR 2012-13 SPECIAL TAX LEVY

9:30:57AM

ASSESSOR PARCEL NUMBER	TRACT	LOT	UNIT	TAX CLASS	NBR UNITS	PERMIT DATE	BLDG SQ FT	PARCEL ACRES	TAXABLE ACRES	MAXIMUM TABLE 1/UNDEV SPECIAL TAX	STEP 1 SPECIAL TAX	STEP 2 SPECIAL TAX	2012-13 SPECIAL TAX
930-275-93	15583	2	28	8	1	12/9/98	1,484	0.0659	0.0511	\$1,529.83	\$357.88	\$0.00	\$357.88
930-275-94	15583	2	29	8	1	12/9/98	1,240	0.0659	0.0511	\$1,529.83	\$357.88	\$0.00	\$357.88
930-275-95	15583	2	30	8	1	12/9/98	1,329	0.0659	0.0511	\$1,529.83	\$357.88	\$0.00	\$357.88
930-275-96	15583	2	31	8	1	12/9/98	1,427	0.0659	0.0511	\$1,529.83	\$357.88	\$0.00	\$357.88
930-275-97	15583	2	32	8	1	12/9/98	1,484	0.0659	0.0511	\$1,529.83	\$357.88	\$0.00	\$357.88
930-275-98	15583	2	33	8	1	12/9/98	1,329	0.0659	0.0511	\$1,529.83	\$357.88	\$0.00	\$357.88
930-275-99	15583	2	34	8	1	12/9/98	1,427	0.0659	0.0511	\$1,529.83	\$357.88	\$0.00	\$357.88
930-276-00	15583	2	35	8	1	12/9/98	1,427	0.0659	0.0511	\$1,529.83	\$357.88	\$0.00	\$357.88
930-276-01	15583	2	36	8	1	12/9/98	1,329	0.0659	0.0511	\$1,529.83	\$357.88	\$0.00	\$357.88
930-276-02	15583	2	37	8	1	12/9/98	1,240	0.0659	0.0511	\$1,529.83	\$357.88	\$0.00	\$357.88
930-276-03	15583	2	38	8	1	12/9/98	1,484	0.0659	0.0511	\$1,529.83	\$357.88	\$0.00	\$357.88
930-276-04	15583	7	118	8	1	12/9/99	1,427	0.1060	0.0465	\$1,529.83	\$357.88	\$0.00	\$357.88
930-276-05	15583	7	119	8	1	12/9/99	1,329	0.1060	0.0465	\$1,529.83	\$357.88	\$0.00	\$357.88
930-276-06	15583	7	120	8	1	12/9/99	1,240	0.1060	0.0465	\$1,529.83	\$357.88	\$0.00	\$357.88
930-276-07	15583	7	121	8	1	12/9/99	1,484	0.1060	0.0465	\$1,529.83	\$357.88	\$0.00	\$357.88
930-276-08	15583	7	122	8	1	9/29/98	1,427	0.1060	0.0465	\$1,529.83	\$357.88	\$0.00	\$357.88
930-276-09	15583	7	123	8	1	9/29/98	1,329	0.1060	0.0465	\$1,529.83	\$357.88	\$0.00	\$357.88
930-276-10	15583	7	124	8	1	9/29/98	1,240	0.1060	0.0465	\$1,529.83	\$357.88	\$0.00	\$357.88
930-276-11	15583	7	125	8	1	9/29/98	1,484	0.1060	0.0465	\$1,529.83	\$357.88	\$0.00	\$357.88
930-276-12	15583	3	39	8	1	10/26/98	1,427	0.0654	0.0483	\$1,529.83	\$357.88	\$0.00	\$357.88
930-276-13	15583	3	40	8	1	10/26/98	1,329	0.0654	0.0483	\$1,529.83	\$357.88	\$0.00	\$357.88
930-276-14	15583	3	41	8	1	10/26/98	1,240	0.0654	0.0483	\$1,529.83	\$357.88	\$0.00	\$357.88
930-276-15	15583	3	42	8	1	10/26/98	1,484	0.0654	0.0483	\$1,529.83	\$357.88	\$0.00	\$357.88
930-276-16	15583	3	43	8	1	10/26/98	1,484	0.0654	0.0483	\$1,529.83	\$357.88	\$0.00	\$357.88
930-276-17	15583	3	44	8	1	10/26/98	1,329	0.0654	0.0483	\$1,529.83	\$357.88	\$0.00	\$357.88
930-276-18	15583	3	45	8	1	10/26/98	1,427	0.0654	0.0483	\$1,529.83	\$357.88	\$0.00	\$357.88
930-276-19	15583	3	46	8	1	10/26/98	1,484	0.0654	0.0483	\$1,529.83	\$357.88	\$0.00	\$357.88
930-276-20	15583	3	47	8	1	10/26/98	1,240	0.0654	0.0483	\$1,529.83	\$357.88	\$0.00	\$357.88
930-276-21	15583	3	48	8	1	10/26/98	1,329	0.0654	0.0483	\$1,529.83	\$357.88	\$0.00	\$357.88
930-276-22	15583	3	49	8	1	10/26/98	1,427	0.0654	0.0483	\$1,529.83	\$357.88	\$0.00	\$357.88
930-276-23	15583	3	50	8	1	10/26/98	1,484	0.0654	0.0483	\$1,529.83	\$357.88	\$0.00	\$357.88
930-276-24	15583	3	51	8	1	10/26/98	1,240	0.0654	0.0483	\$1,529.83	\$357.88	\$0.00	\$357.88
930-276-25	15583	3	52	8	1	10/26/98	1,329	0.0654	0.0483	\$1,529.83	\$357.88	\$0.00	\$357.88
930-276-26	15583	3	53	8	1	10/26/98	1,427	0.0654	0.0483	\$1,529.83	\$357.88	\$0.00	\$357.88
930-276-27	15583	3	54	8	1	10/26/98	1,427	0.0654	0.0483	\$1,529.83	\$357.88	\$0.00	\$357.88

**COMMUNITY FACILITIES DISTRICT NO. 87-5E
OF THE COUNTY OF ORANGE
(RANCHO SANTA MARGARITA)**

FISCAL YEAR 2012-13 SPECIAL TAX LEVY

9:30:57AM

<u>ASSESSOR PARCEL NUMBER</u>	<u>TRACT</u>	<u>LOT</u>	<u>UNIT</u>	<u>TAX CLASS</u>	<u>NBR UNITS</u>	<u>PERMIT DATE</u>	<u>BLDG SQ FT</u>	<u>PARCEL ACRES</u>	<u>TAXABLE ACRES</u>	<u>MAXIMUM TABLE 1/UNDEV SPECIAL TAX</u>	<u>STEP 1 SPECIAL TAX</u>	<u>STEP 2 SPECIAL TAX</u>	<u>2012-13 SPECIAL TAX</u>
930-276-28	15583	3	55	8	1	10/26/98	1,329	0.0654	0.0483	\$1,529.83	\$357.88	\$0.00	\$357.88
930-276-29	15583	3	56	8	1	10/26/98	1,484	0.0654	0.0483	\$1,529.83	\$357.88	\$0.00	\$357.88
930-276-30	15583	6	57	8	1	3/19/99	1,484	0.0582	0.0493	\$1,529.83	\$357.88	\$0.00	\$357.88
930-276-31	15583	6	58	8	1	3/19/99	1,240	0.0582	0.0493	\$1,529.83	\$357.88	\$0.00	\$357.88
930-276-32	15583	6	59	8	1	3/19/99	1,329	0.0582	0.0493	\$1,529.83	\$357.88	\$0.00	\$357.88
930-276-33	15583	6	60	8	1	3/19/99	1,427	0.0582	0.0493	\$1,529.83	\$357.88	\$0.00	\$357.88
930-276-34	15583	6	61	8	1	3/19/99	1,654	0.0582	0.0493	\$1,529.83	\$357.88	\$0.00	\$357.88
930-276-35	15583	6	62	8	1	3/19/99	1,240	0.0582	0.0493	\$1,529.83	\$357.88	\$0.00	\$357.88
930-276-36	15583	6	63	8	1	3/19/99	1,329	0.0582	0.0493	\$1,529.83	\$357.88	\$0.00	\$357.88
930-276-37	15583	6	64	8	1	3/19/99	1,329	0.0582	0.0493	\$1,529.83	\$357.88	\$0.00	\$357.88
930-276-38	15583	6	65	8	1	3/19/99	1,562	0.0582	0.0493	\$1,529.83	\$357.88	\$0.00	\$357.88
930-276-39	15583	6	66	8	1	3/19/99	1,484	0.0582	0.0493	\$1,529.83	\$357.88	\$0.00	\$357.88
930-276-40	15583	6	67	8	1	3/19/99	1,240	0.0582	0.0493	\$1,529.83	\$357.88	\$0.00	\$357.88
930-276-41	15583	6	68	8	1	3/19/99	1,329	0.0582	0.0493	\$1,529.83	\$357.88	\$0.00	\$357.88
930-276-42	15583	6	69	8	1	3/19/99	1,562	0.0582	0.0493	\$1,529.83	\$357.88	\$0.00	\$357.88
930-276-43	15583	6	70	8	1	3/19/99	1,614	0.0582	0.0493	\$1,529.83	\$357.88	\$0.00	\$357.88
930-276-44	15583	6	71	8	1	3/19/99	1,240	0.0582	0.0493	\$1,529.83	\$357.88	\$0.00	\$357.88
930-276-45	15583	6	72	8	1	3/19/99	1,329	0.0582	0.0493	\$1,529.83	\$357.88	\$0.00	\$357.88
930-276-46	15583	6	73	8	1	3/19/99	1,557	0.0582	0.0493	\$1,529.83	\$357.88	\$0.00	\$357.88
930-276-47	15583	6	74	8	1	3/19/99	1,484	0.0582	0.0493	\$1,529.83	\$357.88	\$0.00	\$357.88
930-276-48	15583	6	75	8	1	3/19/99	1,240	0.0582	0.0493	\$1,529.83	\$357.88	\$0.00	\$357.88
930-276-49	15583	6	76	8	1	3/19/99	1,329	0.0582	0.0493	\$1,529.83	\$357.88	\$0.00	\$357.88
930-276-50	15583	6	77	8	1	3/19/99	1,427	0.0582	0.0493	\$1,529.83	\$357.88	\$0.00	\$357.88
930-276-51	15583	5	78	8	1	3/19/99	1,627	0.0614	0.0527	\$1,529.83	\$357.88	\$0.00	\$357.88
930-276-52	15583	5	79	8	1	3/19/99	1,240	0.0614	0.0527	\$1,529.83	\$357.88	\$0.00	\$357.88
930-276-53	15583	5	80	8	1	3/19/99	1,329	0.0614	0.0527	\$1,529.83	\$357.88	\$0.00	\$357.88
930-276-54	15583	5	81	8	1	3/19/99	1,329	0.0614	0.0527	\$1,529.83	\$357.88	\$0.00	\$357.88
930-276-55	15583	5	82	8	1	3/19/99	1,547	0.0614	0.0527	\$1,529.83	\$357.88	\$0.00	\$357.88
930-276-56	15583	5	83	8	1	3/19/99	1,484	0.0614	0.0527	\$1,529.83	\$357.88	\$0.00	\$357.88
930-276-57	15583	5	84	8	1	3/19/99	1,329	0.0614	0.0527	\$1,529.83	\$357.88	\$0.00	\$357.88
930-276-58	15583	5	85	8	1	3/19/99	1,712	0.0614	0.0527	\$1,529.83	\$357.88	\$0.00	\$357.88
930-276-59	15583	5	86	8	1	3/19/99	1,484	0.0614	0.0527	\$1,529.83	\$357.88	\$0.00	\$357.88
930-276-60	15583	5	87	8	1	3/19/99	1,240	0.0614	0.0527	\$1,529.83	\$357.88	\$0.00	\$357.88
930-276-61	15583	5	88	8	1	3/19/99	1,329	0.0614	0.0527	\$1,529.83	\$357.88	\$0.00	\$357.88
930-276-62	15583	5	89	8	1	3/19/99	1,562	0.0614	0.0527	\$1,529.83	\$357.88	\$0.00	\$357.88

**COMMUNITY FACILITIES DISTRICT NO. 87-5E
OF THE COUNTY OF ORANGE
(RANCHO SANTA MARGARITA)**

FISCAL YEAR 2012-13 SPECIAL TAX LEVY

9:30:57AM

ASSESSOR PARCEL NUMBER	TRACT	LOT	UNIT	TAX CLASS	NBR UNITS	PERMIT DATE	BLDG SQ FT	PARCEL ACRES	TAXABLE ACRES	MAXIMUM TABLE 1/UNDEV SPECIAL TAX	STEP 1 SPECIAL TAX	STEP 2 SPECIAL TAX	2012-13 SPECIAL TAX
930-276-63	15583	5	90	8	1	3/19/99	1,484	0.0614	0.0527	\$1,529.83	\$357.88	\$0.00	\$357.88
930-276-64	15583	5	91	8	1	3/19/99	1,240	0.0614	0.0527	\$1,529.83	\$357.88	\$0.00	\$357.88
930-276-65	15583	5	92	8	1	3/19/99	1,329	0.0614	0.0527	\$1,529.83	\$357.88	\$0.00	\$357.88
930-276-66	15583	5	93	8	1	3/19/99	1,427	0.0614	0.0527	\$1,529.83	\$357.88	\$0.00	\$357.88
930-276-67	15583	5	94	8	1	3/19/99	1,619	0.0614	0.0527	\$1,529.83	\$357.88	\$0.00	\$357.88
930-276-68	15583	5	95	8	1	3/19/99	1,240	0.0614	0.0527	\$1,529.83	\$357.88	\$0.00	\$357.88
930-276-69	15583	5	96	8	1	3/19/99	1,329	0.0614	0.0527	\$1,529.83	\$357.88	\$0.00	\$357.88
930-276-70	15583	5	97	8	1	3/19/99	1,427	0.0614	0.0527	\$1,529.83	\$357.88	\$0.00	\$357.88
930-276-71	15583	4	98	8	1	3/23/99	1,484	0.0696	0.0511	\$1,529.83	\$357.88	\$0.00	\$357.88
930-276-72	15583	4	99	8	1	3/23/99	1,240	0.0696	0.0511	\$1,529.83	\$357.88	\$0.00	\$357.88
930-276-73	15583	4	100	8	1	3/23/99	1,329	0.0696	0.0511	\$1,529.83	\$357.88	\$0.00	\$357.88
930-276-74	15583	4	101	8	1	3/23/99	1,562	0.0696	0.0511	\$1,529.83	\$357.88	\$0.00	\$357.88
930-276-75	15583	4	102	8	1	3/23/99	1,427	0.0696	0.0511	\$1,529.83	\$357.88	\$0.00	\$357.88
930-276-76	15583	4	103	8	1	3/23/99	1,329	0.0696	0.0511	\$1,529.83	\$357.88	\$0.00	\$357.88
930-276-77	15583	4	104	8	1	3/23/99	1,484	0.0696	0.0511	\$1,529.83	\$357.88	\$0.00	\$357.88
930-276-78	15583	4	105	8	1	3/23/99	1,427	0.0696	0.0511	\$1,529.83	\$357.88	\$0.00	\$357.88
930-276-79	15583	4	106	8	1	3/23/99	1,329	0.0696	0.0511	\$1,529.83	\$357.88	\$0.00	\$357.88
930-276-80	15583	4	107	8	1	3/23/99	1,240	0.0696	0.0511	\$1,529.83	\$357.88	\$0.00	\$357.88
930-276-81	15583	4	108	8	1	3/23/99	1,484	0.0696	0.0511	\$1,529.83	\$357.88	\$0.00	\$357.88
930-276-82	15583	4	109	8	1	3/23/99	1,484	0.0696	0.0511	\$1,529.83	\$357.88	\$0.00	\$357.88
930-276-83	15583	4	110	8	1	3/23/99	1,240	0.0696	0.0511	\$1,529.83	\$357.88	\$0.00	\$357.88
930-276-84	15583	4	111	8	1	3/23/99	1,329	0.0696	0.0511	\$1,529.83	\$357.88	\$0.00	\$357.88
930-276-85	15583	4	112	8	1	3/23/99	1,329	0.0696	0.0511	\$1,529.83	\$357.88	\$0.00	\$357.88
930-276-86	15583	4	113	8	1	3/23/99	1,427	0.0696	0.0511	\$1,529.83	\$357.88	\$0.00	\$357.88
930-276-87	15583	4	114	8	1	3/23/99	1,427	0.0696	0.0511	\$1,529.83	\$357.88	\$0.00	\$357.88
930-276-88	15583	4	115	8	1	3/23/99	1,329	0.0696	0.0511	\$1,529.83	\$357.88	\$0.00	\$357.88
930-276-89	15583	4	116	8	1	3/23/99	1,240	0.0696	0.0511	\$1,529.83	\$357.88	\$0.00	\$357.88
930-276-90	15583	4	117	8	1	3/23/99	1,484	0.0696	0.0511	\$1,529.83	\$357.88	\$0.00	\$357.88
932-286-08	14862	1	1	9	1	6/22/94	1,251	0.0555	0.0555	\$1,132.53	\$264.94	\$0.00	\$264.94
932-286-09	14862	1	2	9	1	6/22/94	870	0.0555	0.0555	\$1,132.53	\$264.94	\$0.00	\$264.94
932-286-10	14862	1	3	9	1	6/22/94	1,175	0.0555	0.0555	\$1,132.53	\$264.94	\$0.00	\$264.94
932-286-11	14862	1	4	9	1	6/22/94	913	0.0555	0.0555	\$1,132.53	\$264.94	\$0.00	\$264.94
932-286-12	14862	1	5	9	1	6/22/94	913	0.0555	0.0555	\$1,132.53	\$264.94	\$0.00	\$264.94
932-286-13	14862	1	6	9	1	6/22/94	1,175	0.0555	0.0555	\$1,132.53	\$264.94	\$0.00	\$264.94
932-286-14	14862	1	7	9	1	6/22/94	870	0.0555	0.0555	\$1,132.53	\$264.94	\$0.00	\$264.94

**COMMUNITY FACILITIES DISTRICT NO. 87-5E
OF THE COUNTY OF ORANGE
(RANCHO SANTA MARGARITA)**

FISCAL YEAR 2012-13 SPECIAL TAX LEVY

9:30:57AM

ASSESSOR PARCEL NUMBER	TRACT	LOT	UNIT	TAX CLASS	NBR UNITS	PERMIT DATE	BLDG SQ FT	PARCEL ACRES	TAXABLE ACRES	MAXIMUM TABLE 1/UNDEV SPECIAL TAX	STEP 1 SPECIAL TAX	STEP 2 SPECIAL TAX	2012-13 SPECIAL TAX
932-286-15	14862	1	8	8	1	6/22/94	1,251	0.0555	0.0555	\$1,529.83	\$357.88	\$0.00	\$357.88
932-286-16	14862	2	9	8	1	6/22/94	1,251	0.0555	0.0555	\$1,529.83	\$357.88	\$0.00	\$357.88
932-286-17	14862	2	10	9	1	6/22/94	870	0.0555	0.0555	\$1,132.53	\$264.94	\$0.00	\$264.94
932-286-18	14862	2	11	9	1	6/22/94	1,175	0.0555	0.0555	\$1,132.53	\$264.94	\$0.00	\$264.94
932-286-19	14862	2	12	9	1	6/22/94	913	0.0555	0.0555	\$1,132.53	\$264.94	\$0.00	\$264.94
932-286-20	14862	2	13	9	1	6/22/94	913	0.0555	0.0555	\$1,132.53	\$264.94	\$0.00	\$264.94
932-286-21	14862	2	14	9	1	6/22/94	1,175	0.0555	0.0555	\$1,132.53	\$264.94	\$0.00	\$264.94
932-286-22	14862	2	15	9	1	6/22/94	870	0.0555	0.0555	\$1,132.53	\$264.94	\$0.00	\$264.94
932-286-23	14862	2	16	8	1	6/22/94	1,251	0.0555	0.0555	\$1,529.83	\$357.88	\$0.00	\$357.88
932-286-24	14862	9	57	8	1	6/22/94	1,474	0.0555	0.0555	\$1,529.83	\$357.88	\$0.00	\$357.88
932-286-25	14862	9	58	8	1	6/22/94	1,252	0.0555	0.0555	\$1,529.83	\$357.88	\$0.00	\$357.88
932-286-26	14862	9	59	9	1	6/22/94	913	0.0555	0.0555	\$1,132.53	\$264.94	\$0.00	\$264.94
932-286-27	14862	9	60	8	1	6/22/94	1,474	0.0555	0.0555	\$1,529.83	\$357.88	\$0.00	\$357.88
932-286-28	14862	9	61	9	1	6/22/94	913	0.0555	0.0555	\$1,132.53	\$264.94	\$0.00	\$264.94
932-286-29	14862	9	62	8	1	6/22/94	1,344	0.0555	0.0555	\$1,529.83	\$357.88	\$0.00	\$357.88
932-286-30	14862	9	63	8	1	6/22/94	1,252	0.0555	0.0555	\$1,529.83	\$357.88	\$0.00	\$357.88
932-286-31	14862	9	64	8	1	6/22/94	1,344	0.0555	0.0555	\$1,529.83	\$357.88	\$0.00	\$357.88
932-286-32	14862	9	65	9	1	6/22/94	913	0.0555	0.0555	\$1,132.53	\$264.94	\$0.00	\$264.94
932-286-33	14862	9	66	8	1	6/22/94	1,474	0.0555	0.0555	\$1,529.83	\$357.88	\$0.00	\$357.88
932-286-34	14862	14	67	8	1	2/24/94	1,252	0.0555	0.0555	\$1,529.83	\$357.88	\$0.00	\$357.88
932-286-35	14862	14	68	8	1	2/24/94	1,344	0.0555	0.0555	\$1,529.83	\$357.88	\$0.00	\$357.88
932-286-36	14862	14	69	9	1	2/24/94	913	0.0555	0.0555	\$1,132.53	\$264.94	\$0.00	\$264.94
932-286-37	14862	14	70	8	1	2/24/94	1,474	0.0555	0.0555	\$1,529.83	\$357.88	\$0.00	\$357.88
932-286-38	14862	12	78	9	1	2/24/94	913	0.0555	0.0555	\$1,132.53	\$264.94	\$0.00	\$264.94
932-286-39	14862	12	79	9	1	2/24/94	1,175	0.0555	0.0555	\$1,132.53	\$264.94	\$0.00	\$264.94
932-286-40	14862	12	80	9	1	2/24/94	870	0.0555	0.0555	\$1,132.53	\$264.94	\$0.00	\$264.94
932-286-41	14862	12	81	8	1	2/24/94	1,251	0.0555	0.0555	\$1,529.83	\$357.88	\$0.00	\$357.88
932-286-42	14862	3	17	8	1	8/29/94	1,251	0.0555	0.0555	\$1,529.83	\$357.88	\$0.00	\$357.88
932-286-43	14862	3	18	9	1	8/29/94	870	0.0579	0.0579	\$1,132.53	\$264.94	\$0.00	\$264.94
932-286-44	14862	3	19	9	1	8/29/94	1,175	0.0579	0.0579	\$1,132.53	\$264.94	\$0.00	\$264.94
932-286-45	14862	3	20	9	1	8/29/94	913	0.0579	0.0579	\$1,132.53	\$264.94	\$0.00	\$264.94
932-286-46	14862	3	21	9	1	8/29/94	913	0.0579	0.0579	\$1,132.53	\$264.94	\$0.00	\$264.94
932-286-47	14862	3	22	9	1	8/29/94	1,175	0.0579	0.0579	\$1,132.53	\$264.94	\$0.00	\$264.94
932-286-48	14862	3	23	9	1	8/29/94	870	0.0579	0.0579	\$1,132.53	\$264.94	\$0.00	\$264.94
932-286-49	14862	3	24	8	1	8/29/94	1,251	0.0579	0.0579	\$1,529.83	\$357.88	\$0.00	\$357.88

**COMMUNITY FACILITIES DISTRICT NO. 87-5E
OF THE COUNTY OF ORANGE
(RANCHO SANTA MARGARITA)**

FISCAL YEAR 2012-13 SPECIAL TAX LEVY

9:30:57AM

<u>ASSESSOR PARCEL NUMBER</u>	<u>TRACT</u>	<u>LOT</u>	<u>UNIT</u>	<u>TAX CLASS</u>	<u>NBR UNITS</u>	<u>PERMIT DATE</u>	<u>BLDG SQ FT</u>	<u>PARCEL ACRES</u>	<u>TAXABLE ACRES</u>	<u>MAXIMUM TABLE 1/UNDEV SPECIAL TAX</u>	<u>STEP 1 SPECIAL TAX</u>	<u>STEP 2 SPECIAL TAX</u>	<u>2012-13 SPECIAL TAX</u>
932-286-50	14862	4	25	8	1	8/29/94	1,251	0.0579	0.0579	\$1,529.83	\$357.88	\$0.00	\$357.88
932-286-51	14862	4	26	9	1	8/29/94	870	0.0579	0.0579	\$1,132.53	\$264.94	\$0.00	\$264.94
932-286-52	14862	4	27	9	1	8/29/94	1,175	0.0579	0.0579	\$1,132.53	\$264.94	\$0.00	\$264.94
932-286-53	14862	4	28	9	1	8/29/94	913	0.0579	0.0579	\$1,132.53	\$264.94	\$0.00	\$264.94
932-286-54	14862	4	29	9	1	8/29/94	913	0.0579	0.0579	\$1,132.53	\$264.94	\$0.00	\$264.94
932-286-55	14862	4	30	9	1	8/29/94	913	0.0579	0.0579	\$1,132.53	\$264.94	\$0.00	\$264.94
932-286-56	14862	4	31	9	1	8/29/94	1,175	0.0579	0.0579	\$1,132.53	\$264.94	\$0.00	\$264.94
932-286-57	14862	4	32	9	1	8/29/94	870	0.0579	0.0579	\$1,132.53	\$264.94	\$0.00	\$264.94
932-286-58	14862	4	33	9	1	8/29/94	870	0.0579	0.0579	\$1,132.53	\$264.94	\$0.00	\$264.94
932-286-59	14862	4	34	8	1	8/29/94	1,251	0.0579	0.0579	\$1,529.83	\$357.88	\$0.00	\$357.88
932-286-60	14862	5	35	9	1	8/29/94	1,119	0.0579	0.0579	\$1,132.53	\$264.94	\$0.00	\$264.94
932-286-61	14862	5	36	8	1	8/29/94	1,344	0.0579	0.0579	\$1,529.83	\$357.88	\$0.00	\$357.88
932-286-62	14862	5	37	8	1	8/29/94	1,252	0.0579	0.0579	\$1,529.83	\$357.88	\$0.00	\$357.88
932-286-63	14862	5	38	8	1	8/29/94	1,344	0.0579	0.0579	\$1,529.83	\$357.88	\$0.00	\$357.88
932-286-64	14862	5	39	9	1	8/29/94	1,119	0.0579	0.0579	\$1,132.53	\$264.94	\$0.00	\$264.94
932-286-65	14862	6	40	8	1	8/29/94	1,474	0.0579	0.0579	\$1,529.83	\$357.88	\$0.00	\$357.88
932-286-66	14862	6	41	9	1	8/29/94	1,119	0.0579	0.0579	\$1,132.53	\$264.94	\$0.00	\$264.94
932-286-67	14862	6	42	8	1	8/29/94	1,344	0.0579	0.0579	\$1,529.83	\$357.88	\$0.00	\$357.88
932-286-68	14862	6	43	8	1	8/29/94	1,252	0.0579	0.0579	\$1,529.83	\$357.88	\$0.00	\$357.88
932-286-69	14862	6	44	8	1	8/29/94	1,344	0.0579	0.0579	\$1,529.83	\$357.88	\$0.00	\$357.88
932-286-70	14862	6	45	9	1	8/29/94	1,119	0.0579	0.0579	\$1,132.53	\$264.94	\$0.00	\$264.94
932-286-71	14862	6	46	8	1	8/29/94	1,474	0.0579	0.0579	\$1,529.83	\$357.88	\$0.00	\$357.88
932-286-72	14862	7	47	9	1	8/29/94	1,119	0.0579	0.0579	\$1,132.53	\$264.94	\$0.00	\$264.94
932-286-73	14862	7	48	9	1	8/29/94	1,119	0.0579	0.0579	\$1,132.53	\$264.94	\$0.00	\$264.94
932-286-74	14862	7	49	8	1	8/29/94	1,474	0.0579	0.0579	\$1,529.83	\$357.88	\$0.00	\$357.88
932-286-75	14862	8	50	8	1	8/29/94	1,474	0.0579	0.0579	\$1,529.83	\$357.88	\$0.00	\$357.88
932-286-76	14862	8	51	9	1	8/29/94	1,119	0.0579	0.0579	\$1,132.53	\$264.94	\$0.00	\$264.94
932-286-77	14862	8	52	8	1	8/29/94	1,344	0.0579	0.0579	\$1,529.83	\$357.88	\$0.00	\$357.88
932-286-78	14862	8	53	8	1	8/29/94	1,252	0.0579	0.0579	\$1,529.83	\$357.88	\$0.00	\$357.88
932-286-79	14862	8	54	8	1	8/29/94	1,344	0.0579	0.0579	\$1,529.83	\$357.88	\$0.00	\$357.88
932-286-80	14862	8	55	9	1	8/29/94	1,119	0.0579	0.0579	\$1,132.53	\$264.94	\$0.00	\$264.94
932-286-81	14862	8	56	8	1	8/29/94	1,474	0.0579	0.0579	\$1,529.83	\$357.88	\$0.00	\$357.88
932-286-82	15306	1	210	9	1	3/18/97	1,119	0.0763	0.0763	\$1,132.53	\$264.94	\$0.00	\$264.94
932-286-83	15306	1	211	8	1	3/18/97	1,344	0.0763	0.0763	\$1,529.83	\$357.88	\$0.00	\$357.88
932-286-84	15306	1	212	8	1	3/18/97	1,252	0.0763	0.0763	\$1,529.83	\$357.88	\$0.00	\$357.88

**COMMUNITY FACILITIES DISTRICT NO. 87-5E
OF THE COUNTY OF ORANGE
(RANCHO SANTA MARGARITA)**

FISCAL YEAR 2012-13 SPECIAL TAX LEVY

9:30:57AM

<u>ASSESSOR PARCEL NUMBER</u>	<u>TRACT</u>	<u>LOT</u>	<u>UNIT</u>	<u>TAX CLASS</u>	<u>NBR UNITS</u>	<u>PERMIT DATE</u>	<u>BLDG SQ FT</u>	<u>PARCEL ACRES</u>	<u>TAXABLE ACRES</u>	<u>MAXIMUM TABLE 1/UNDEV SPECIAL TAX</u>	<u>STEP 1 SPECIAL TAX</u>	<u>STEP 2 SPECIAL TAX</u>	<u>2012-13 SPECIAL TAX</u>
932-286-85	15306	2	213	8	1	3/18/97	1,474	0.0683	0.0683	\$1,529.83	\$357.88	\$0.00	\$357.88
932-286-86	15306	2	214	9	1	3/19/97	1,119	0.0683	0.0683	\$1,132.53	\$264.94	\$0.00	\$264.94
932-286-87	15306	2	215	9	1	3/19/97	1,119	0.0683	0.0683	\$1,132.53	\$264.94	\$0.00	\$264.94
932-286-88	15306	2	216	8	1	3/19/97	1,252	0.0683	0.0683	\$1,529.83	\$357.88	\$0.00	\$357.88
932-286-89	15306	2	217	8	1	3/19/97	1,252	0.0683	0.0683	\$1,529.83	\$357.88	\$0.00	\$357.88
932-286-90	15306	2	218	8	1	3/19/97	1,344	0.0683	0.0683	\$1,529.83	\$357.88	\$0.00	\$357.88
932-286-91	15306	2	219	9	1	3/19/97	1,119	0.0683	0.0683	\$1,132.53	\$264.94	\$0.00	\$264.94
932-286-92	15306	2	220	8	1	3/19/97	1,474	0.0683	0.0683	\$1,529.83	\$357.88	\$0.00	\$357.88
932-286-93	15306	2	221	9	1	3/19/97	1,119	0.0683	0.0683	\$1,132.53	\$264.94	\$0.00	\$264.94
932-286-94	15306	2	222	8	1	3/19/97	1,474	0.0683	0.0683	\$1,529.83	\$357.88	\$0.00	\$357.88
932-286-95	14862	15	71	9	1	1/21/98	1,119	0.0727	0.0727	\$1,132.53	\$264.94	\$0.00	\$264.94
932-286-96	14862	10	72	9	1	1/21/98	1,119	0.0727	0.0727	\$1,132.53	\$264.94	\$0.00	\$264.94
932-286-97	14862	10	73	8	1	1/21/98	1,474	0.0727	0.0727	\$1,529.83	\$357.88	\$0.00	\$357.88
932-286-98	14862	11	74	8	1	1/21/98	1,251	0.0727	0.0727	\$1,529.83	\$357.88	\$0.00	\$357.88
932-286-99	14862	11	75	9	1	1/21/98	870	0.0727	0.0727	\$1,132.53	\$264.94	\$0.00	\$264.94
932-287-00	14862	11	76	9	1	1/21/98	1,175	0.0727	0.0727	\$1,132.53	\$264.94	\$0.00	\$264.94
932-287-01	14862	11	77	9	1	1/21/98	913	0.0727	0.0727	\$1,132.53	\$264.94	\$0.00	\$264.94
932-287-02	15306	4	223	8	1	5/20/97	1,474	0.0727	0.0634	\$1,529.83	\$357.88	\$0.00	\$357.88
932-287-03	15306	4	224	8	1	5/20/97	1,344	0.0727	0.0634	\$1,529.83	\$357.88	\$0.00	\$357.88
932-287-04	15306	4	225	8	1	5/20/97	1,252	0.0727	0.0634	\$1,529.83	\$357.88	\$0.00	\$357.88
932-287-05	15306	4	226	8	1	5/20/97	1,344	0.0727	0.0634	\$1,529.83	\$357.88	\$0.00	\$357.88
932-287-06	15306	4	227	9	1	5/20/97	1,119	0.0727	0.0634	\$1,132.53	\$264.94	\$0.00	\$264.94
932-287-07	15306	3	228	8	1	5/20/97	1,474	0.0727	0.0566	\$1,529.83	\$357.88	\$0.00	\$357.88
932-287-08	15306	3	229	9	1	5/20/97	1,119	0.0727	0.0566	\$1,132.53	\$264.94	\$0.00	\$264.94
932-287-09	15306	3	230	9	1	5/20/97	1,119	0.0727	0.0566	\$1,132.53	\$264.94	\$0.00	\$264.94
932-287-10	15306	3	231	9	1	5/20/97	1,119	0.0727	0.0566	\$1,132.53	\$264.94	\$0.00	\$264.94
932-287-11	15306	3	232	8	1	5/20/97	1,344	0.0727	0.0566	\$1,529.83	\$357.88	\$0.00	\$357.88
932-287-12	15306	3	233	8	1	5/20/97	1,252	0.0727	0.0566	\$1,529.83	\$357.88	\$0.00	\$357.88
932-287-13	15306	3	234	8	1	5/20/97	1,344	0.0727	0.0566	\$1,529.83	\$357.88	\$0.00	\$357.88
932-287-14	15306	3	235	9	1	5/20/97	1,119	0.0727	0.0566	\$1,132.53	\$264.94	\$0.00	\$264.94
932-287-15	15306	3	236	9	1	5/20/97	1,119	0.0727	0.0566	\$1,132.53	\$264.94	\$0.00	\$264.94
932-287-16	15306	3	237	8	1	5/20/97	1,474	0.0727	0.0566	\$1,529.83	\$357.88	\$0.00	\$357.88
932-287-17	15306	8	238	8	1	5/20/97	1,474	0.0727	0.0440	\$1,529.83	\$357.88	\$0.00	\$357.88
932-287-18	15306	8	239	9	1	5/20/97	1,119	0.0727	0.0440	\$1,132.53	\$264.94	\$0.00	\$264.94
932-287-19	15306	7	240	9	1	5/20/97	1,119	0.0727	0.0603	\$1,132.53	\$264.94	\$0.00	\$264.94

**COMMUNITY FACILITIES DISTRICT NO. 87-5E
OF THE COUNTY OF ORANGE
(RANCHO SANTA MARGARITA)**

FISCAL YEAR 2012-13 SPECIAL TAX LEVY

9:30:57AM

<u>ASSESSOR PARCEL NUMBER</u>	<u>TRACT</u>	<u>LOT</u>	<u>UNIT</u>	<u>TAX CLASS</u>	<u>NBR UNITS</u>	<u>PERMIT DATE</u>	<u>BLDG SQ FT</u>	<u>PARCEL ACRES</u>	<u>TAXABLE ACRES</u>	<u>MAXIMUM TABLE 1/UNDEV SPECIAL TAX</u>	<u>STEP 1 SPECIAL TAX</u>	<u>STEP 2 SPECIAL TAX</u>	<u>2012-13 SPECIAL TAX</u>
932-287-20	15306	7	241	8	1	5/20/97	1,474	0.0727	0.0603	\$1,529.83	\$357.88	\$0.00	\$357.88
932-287-21	15306	7	242	9	1	5/20/97	1,119	0.0727	0.0603	\$1,132.53	\$264.94	\$0.00	\$264.94
932-287-22	15306	7	243	8	1	5/20/97	1,344	0.0727	0.0603	\$1,529.83	\$357.88	\$0.00	\$357.88
932-287-23	15306	7	244	8	1	5/20/97	1,252	0.0727	0.0603	\$1,529.83	\$357.88	\$0.00	\$357.88
932-287-24	15306	7	245	9	1	5/20/97	1,119	0.0727	0.0603	\$1,132.53	\$264.94	\$0.00	\$264.94
932-287-25	15306	7	246	8	1	5/20/97	1,474	0.0727	0.0603	\$1,529.83	\$357.88	\$0.00	\$357.88
932-287-26	15306	5	247	8	1	5/20/97	1,474	0.0727	0.0658	\$1,529.83	\$357.88	\$0.00	\$357.88
932-287-27	15306	5	248	8	1	5/20/97	1,344	0.0727	0.0658	\$1,529.83	\$357.88	\$0.00	\$357.88
932-287-28	15306	5	249	8	1	5/20/97	1,252	0.0727	0.0658	\$1,529.83	\$357.88	\$0.00	\$357.88
932-287-29	15306	5	250	8	1	5/20/97	1,344	0.0727	0.0658	\$1,529.83	\$357.88	\$0.00	\$357.88
932-287-30	15306	5	251	8	1	5/20/97	1,474	0.0727	0.0658	\$1,529.83	\$357.88	\$0.00	\$357.88
932-287-31	15306	6	252	8	1	1/21/98	1,474	0.0727	0.0557	\$1,529.83	\$357.88	\$0.00	\$357.88
932-287-32	15306	6	253	9	1	1/21/98	1,119	0.0727	0.0557	\$1,132.53	\$264.94	\$0.00	\$264.94
932-287-33	15306	6	254	8	1	1/21/98	1,344	0.0727	0.0557	\$1,529.83	\$357.88	\$0.00	\$357.88
932-287-34	15306	6	255	8	1	1/21/98	1,252	0.0727	0.0557	\$1,529.83	\$357.88	\$0.00	\$357.88
932-287-35	15306	6	256	8	1	1/21/98	1,344	0.0727	0.0557	\$1,529.83	\$357.88	\$0.00	\$357.88
932-287-36	15306	6	257	9	1	1/21/98	1,119	0.0727	0.0557	\$1,132.53	\$264.94	\$0.00	\$264.94
932-287-37	15306	6	258	8	1	1/21/98	1,474	0.0727	0.0557	\$1,529.83	\$357.88	\$0.00	\$357.88
Records Printed: 1,068										\$4,117,829.80	\$873,447.88	\$0.00	\$873,447.88