



AUGUST 14, 2024

# ORDINANCE UPDATING SPEED LIMITS BASED ON ENGINEERING AND TRAFFIC SURVEY (E&TS)

# ENGINEERING AND TRAFFIC SURVEY (E&TS)

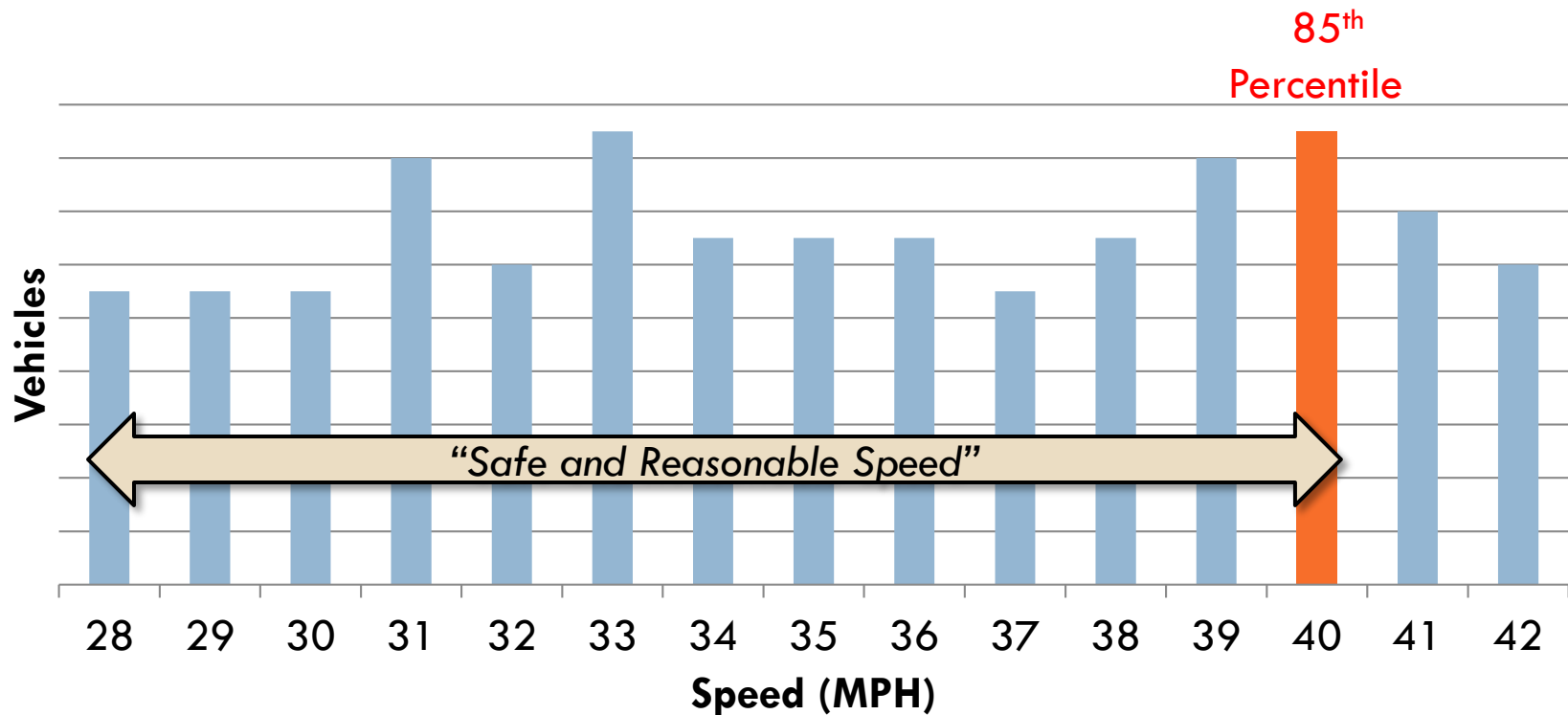


- California Vehicle Code requires that speed limits (E&TS) are adopted by **ordinance**.
- E&TS updates required every **5 to 7 years** in order to use radar or lidar.
- California Vehicle Code previously **limited** local **discretion** on setting speed limits to nearest 5 miles per hour (MPH) increment of the **85<sup>th</sup> percentile** speed.
- Assembly Bill 43 (AB 43), adopted in October 2021, allows local jurisdictions to lower posted speed limits by an additional 5 MPH when certain criteria are met

# 85<sup>TH</sup> PERCENTILE SPEED



- The 85<sup>th</sup>-percentile speed represents the speed, at or below, which 85 percent of the traffic is traveling during typical weekday conditions.





# SPEED LIMIT CONSIDERATIONS

- 85<sup>th</sup>-percentile speed
- Collision data
- Roadway characteristics
- Existing speed limits

## New Speed Considerations with AB43:

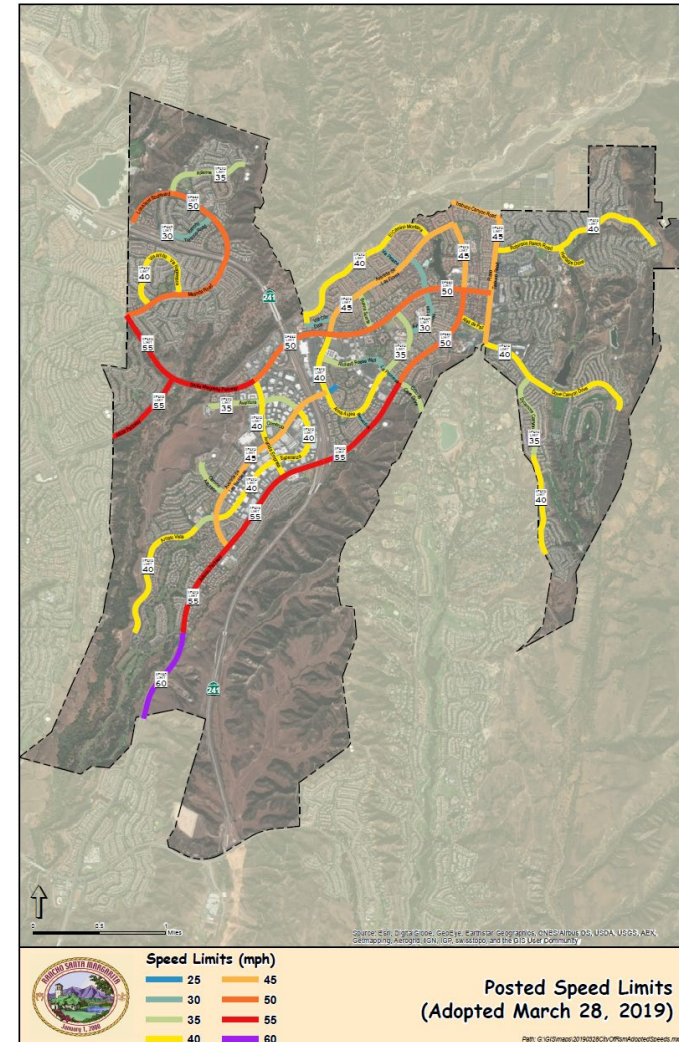
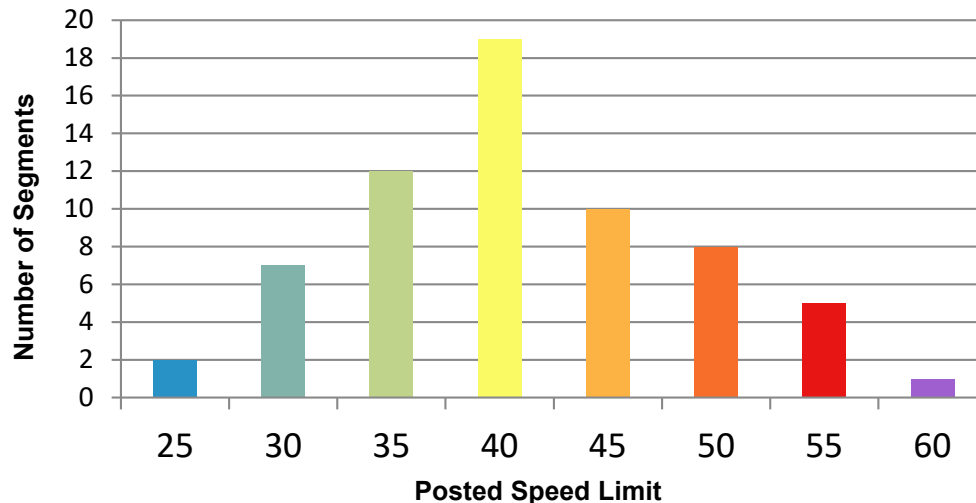
- Land use considerations (i.e., residential, parks, schools, etc.)
- Presence of vulnerable people (i.e., children, seniors, etc.)
- Land or facilities generating pedestrian or bicyclists



# POSTED SPEED LIMITS (EXISTING)



- 64 roadway segments defined within the City with speeds ranging from 25 mph to 60 mph.
- Last major E&TS speed survey update completed in March 2019.
- E&TS within 5 to 7 year update period.





- 
- A pie chart illustrating the distribution of responses for the question 'How much faster would you like to travel?'. The chart is divided into four segments: a large orange segment representing 'Increase 5 mph' at 69%, a blue segment representing 'No Change' at 30%, a small grey segment representing 'Increase 10 mph' at 1%, and a very small green segment representing 'Increase 0 mph' at 0%.
- | Response        | Percentage |
|-----------------|------------|
| Increase 5 mph  | 69%        |
| No Change       | 30%        |
| Increase 10 mph | 1%         |
| Increase 0 mph  | 0%         |

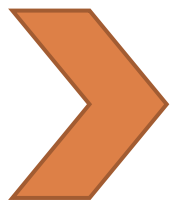


# E&TS SPEED LIMITS

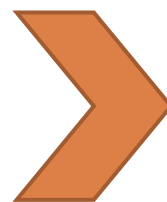


- CVC 22358.6 requires the City to **round** speed limits to the **nearest 5 mph increment** of the 85<sup>th</sup> percentile speed.
- In cases where the speed limits need to be **rounded up** to the nearest 5 mph, **the City may** decide to instead **round down** to the lower 5 mph increment
- In effect, this law **allows the City to round down** to the nearest increment of the 85<sup>th</sup> percentile speed instead of up.
- Staff has made **every effort** to round the speed limits down where possible.
- Application of AB 43 allows **an additional 5 mph reduction** when certain criteria are met

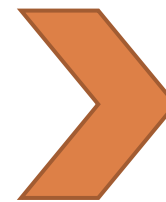
85<sup>th</sup> Percentile  
Speed  
**37.6 mph**



Nearest 5 mph



Round Down



Reduce 5 mph  
(if applicable)





# City of Rancho Santa Margarita

Engineering and Traffic Survey (E&TS)

Drafted: July 23, 2024

Speed Survey ID: 9

## Avenida de Las Flores Santa Margarita Parkway to Laurel

### Prevailing Speed Data

Date of Survey	4/2/2024
Time of Survey	1:20 PM
85th Percentile	46 mph
50th Percentile	42 mph
10 mph Pace	38-47 mph
Percent in Pace	100 %

### Traffic Factors

Average Daily Traffic	8,700
On-Street Parking	Yes
Painted Bike Lanes	Yes
Crosswalks	@ Traffic Signals

### Roadway Features

Segment Length	0.7 miles
Visibility	Acceptable
Facility Type	Collector
Lane Configuration	2 lanes
Right of Way Width	66 feet

### Adjacent Land Uses

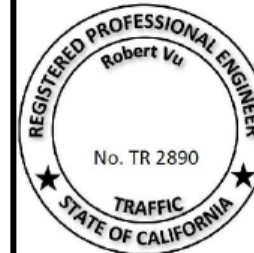
Residential, church, park.

### Other

Painted center median.

### Collision History

Months Evaluated	36
Total Collisions	6
Speed Related	0
Collisions/Million Vehicle Miles	0.9



### Recommended

SPEED  
LIMIT  
**45**

Posted

SPEED  
LIMIT  
**40**

### Recommendations

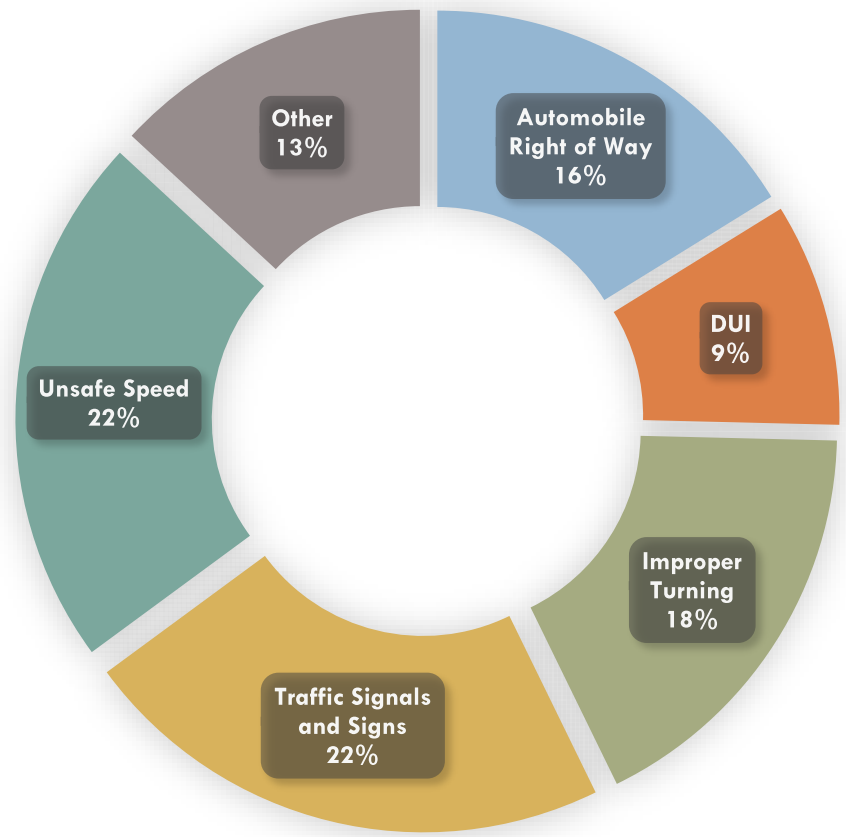
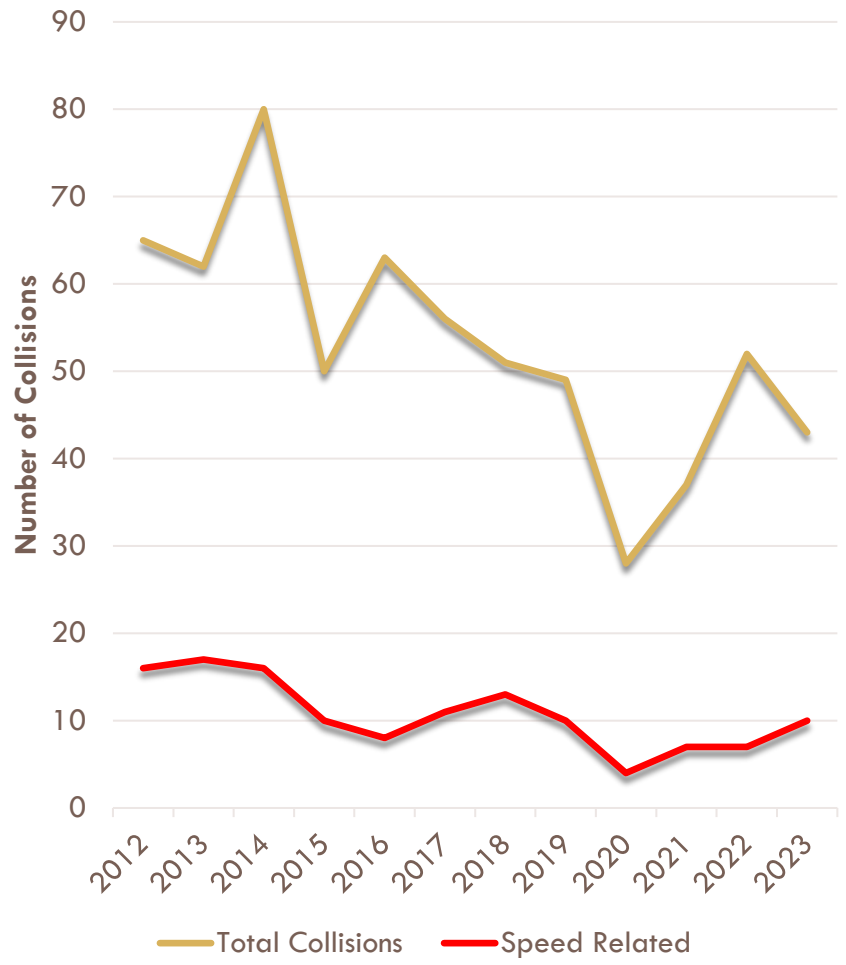
85th percentile speed requires a minimum posted speed limit of 45 mph. Per AB-43, the speed limit may be reduced another 5 mph increment below the minimum 85th percentile speed. Reduce posted speed limit to 40 mph.



Source: Esri, Maxar, GeoEye, Earthstar Geographics, CNES/Airbus DS, USDA, USGS, AeroGRID, IGN, and the GIS User Community. Source: Esri, Maxar, Earthstar Geographics, and the GIS User Community.



# COLLISION HISTORY



# FINDINGS



- The basic speed law is founded on the belief that most drivers will operate their vehicles in a **safe and reasonable manner**.
- The 85<sup>th</sup> percentile speed establishes a realistic speed zone, which invites **compliance**.
- Speed limits permit **enforcement** using radar or lidar.
- AB-43 legislation allows reduction of speed limits to **historical levels**.
- The **Planning Commission** recommended by **4-0-1 vote** that the City Council adopt the ordinance updating the speed limits with a recommendation for implementation of a Public Outreach Plan





# IMPLEMENTATION/PUBLIC OUTREACH

- Ordinance shall take effect **thirty (30) days** after its adoption
- **Warning citations** will be issued for violations exceeding the speed limit by 10 MPH or less for the first 30 days that a lower speed limit is in effect
- Publish **online** to City website and e-newsletter as well as City Social Media Accounts
- Changeable message signs (CMS) can be placed **along key corridors** to provide notice of reduced speeds
- Orange flags may be used **in conjunction** with the reduced speed limit signs on key collector streets





# RECOMMENDATIONS



1. Receive staff presentation and report.
2. Introduce for first reading, read by title only, and waive future reading of an Ordinance entitled:



AN ORDINANCE OF THE CITY COUNCIL OF THE CITY OF RANCHO SANTA MARGARITA, CALIFORNIA, AMENDING AND RESTATING SECTION 12.01.090 (SPEED LIMITS) OF CHAPTER 12.01 (GENERAL AND ADMINISTRATIVE PROVISIONS) OF TITLE 12 (VEHICLES AND TRAFFIC) OF THE CITY OF RANCHO SANTA MARGARITA MUNICIPAL CODE REGARDING SPEED LIMITS, INCLUDING AN EXEMPTION FROM THE CALIFORNIA ENVIRONMENTAL QUALITY ACT (CEQA) PER CEQA GUIDELINES SECTION 15301