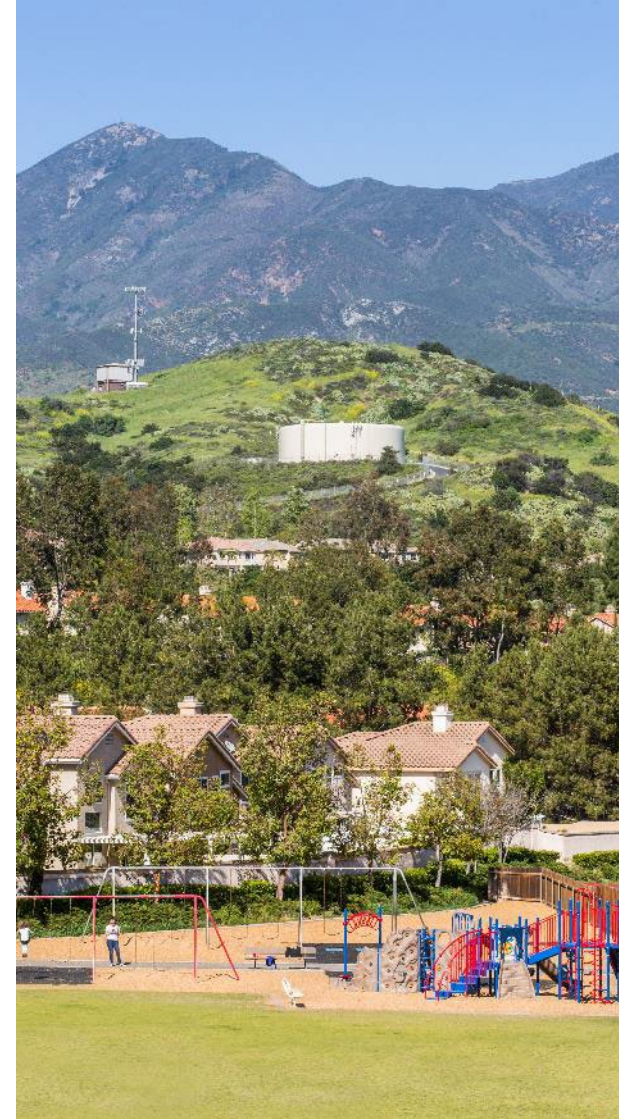


Protecting RSM During Wildfires & High Winds



February 26, 2025



**Santa Margarita
Water District**

ABOUT SMWD

Experts in Water

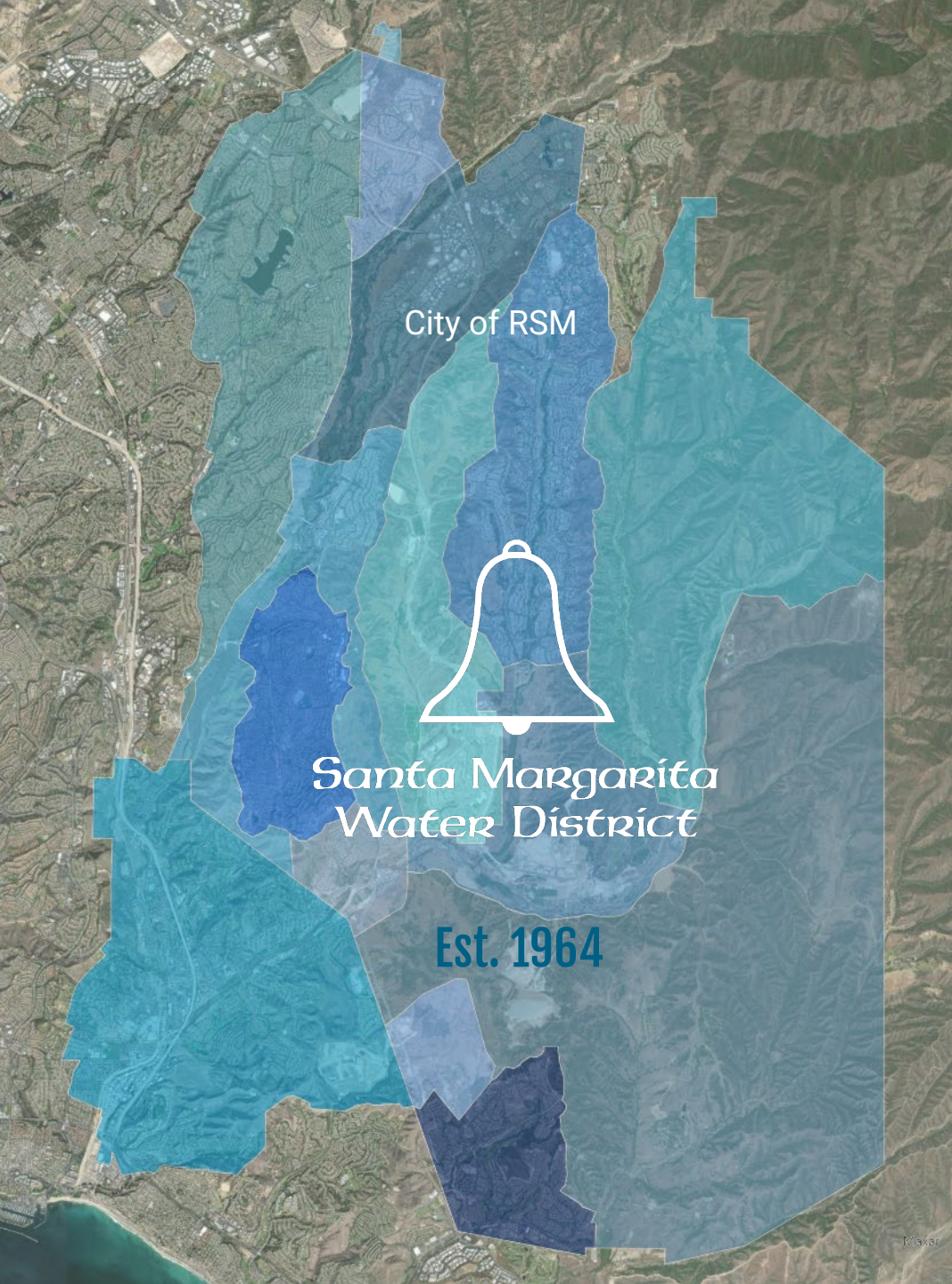
- Drinking Water, Recycled Water & Wastewater
- Safe drinking water is job #1

Proudly Serving Rancho Santa Margarita

- 220,000 Residents in South Orange County

System Reliability

- \$3 Billion Water System
- 1,700+ miles of pipeline
- 250 facilities
- Invested \$21.44 MM in maintenance & upgrades (2024)



ANNUAL WATER SUPPLY

~10 Billion Gallons/37,000 Acre-Feet

70%

IMPORTED WATER

Drinking water from
Northern California & Colorado River

5%

LOCAL WATER

Groundwater (San Juan Capistrano)

25%

RECYCLED WATER

Locally produced at two SMWD water
reclamation plants





SMWD COMMITTED TO **SAFEGUARDING** OUR COMMUNITY



- 500 million gallons of **emergency drinking water** stored locally
- 3 billion gallons of recycled water to **support aerial firefighting**
- **HeloPod** located near Caspers Regional Park
- Emergency **backup power** installed at key facilities



RSM Water Infrastructure

Served by SMWD



Santa Margarita
Water District



10 Reservoir (45 million gallons)



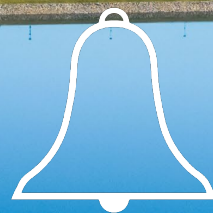
1,500 Fire Hydrants



Coordinate with OCFA



Backup Power at all facilities



*Santa Margarita
Water District*

We're Proud to Serve & Protect
Rancho Santa Margarita



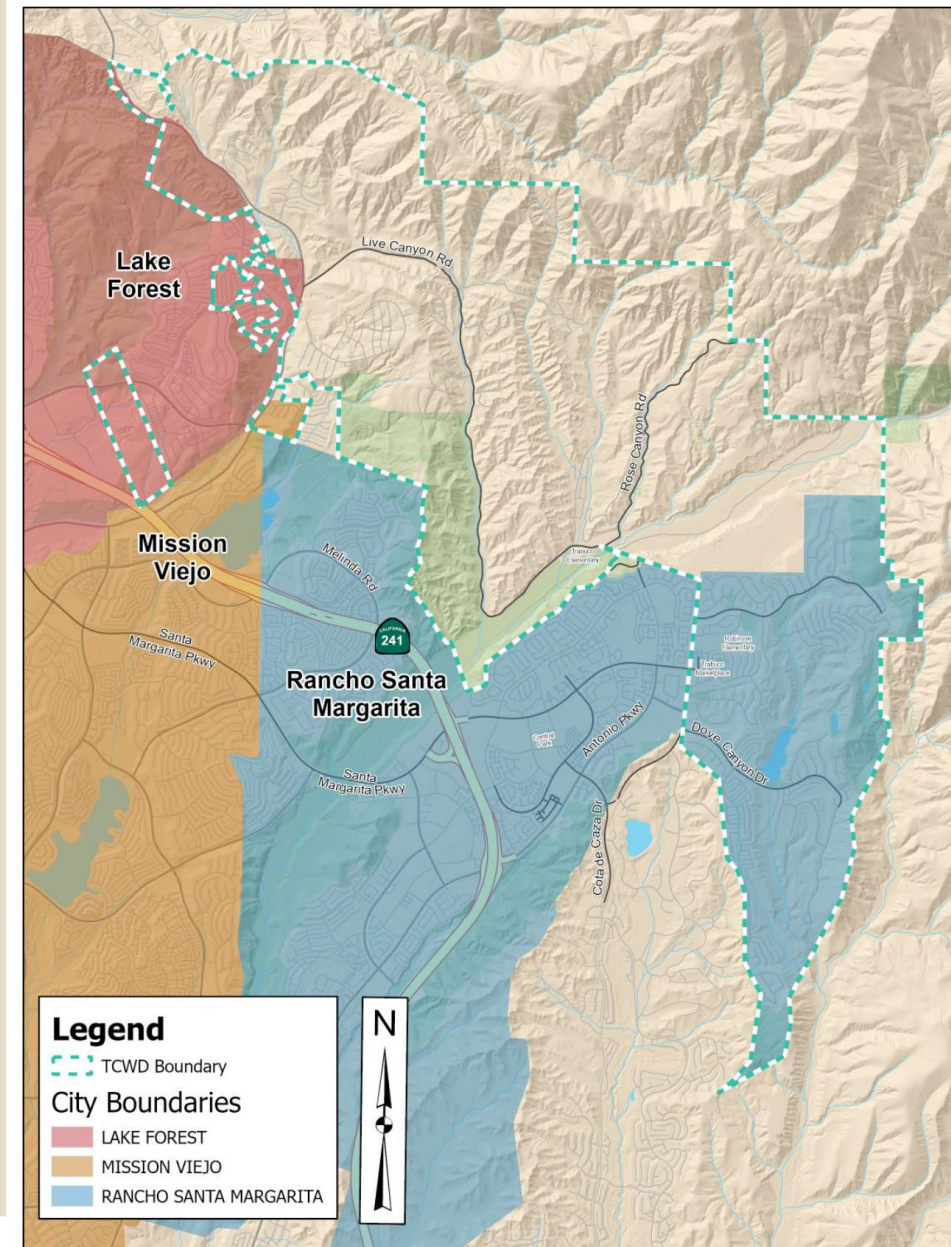
Wildfires & High Wind Preparedness

City of Rancho Santa Margarita City Council Meeting – February 2025



About TCWD

- Formed in 1962 - SAMCWD
- Governed by a Board of Directors (5)
- Approximately 4,200 connections
- Approximately 13,400 population
- Serves Cities of RSM, Lake Forest, & Mission Viejo, and Unincorporated County of Orange
- D4 Distribution System due to elevation changes



District Services

FULL SERVICE SPECIAL DISTRICT

- Water Filtration/Treatment
- Groundwater Filtration/Treatment
- Wastewater Treatment – Title 22
- Recycled Water System
- Urban Water Recovery System
- Community Center



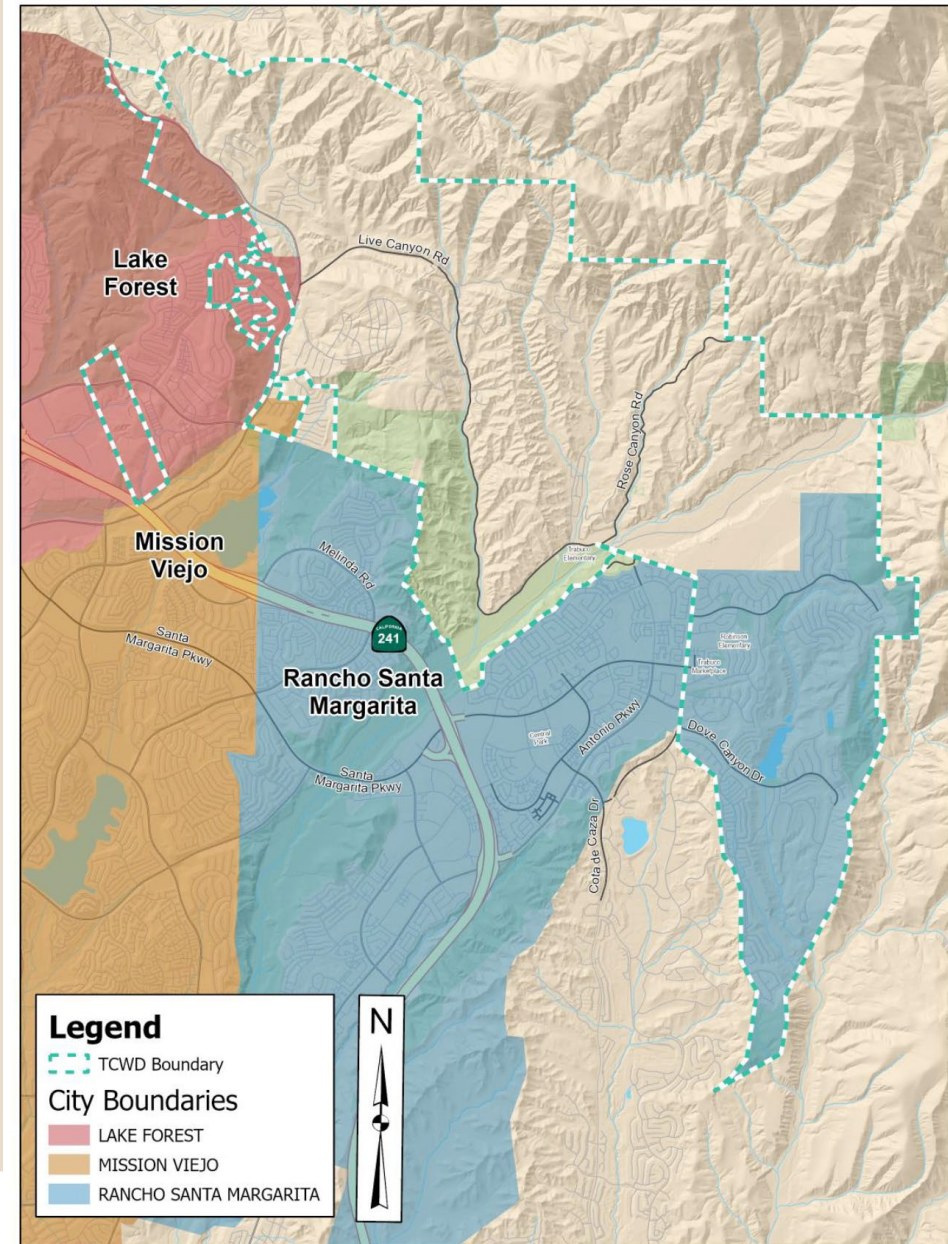
Wildfire Preparedness

Service Area Interface

Wildfire Events

- Silverado Fire – 2007, 2020
- Santiago Fire - 2018
- Holy Fire – 2016, 2018
- Jim Fire - 2022
- Airport Fire - 2024

SCE PSPS Events





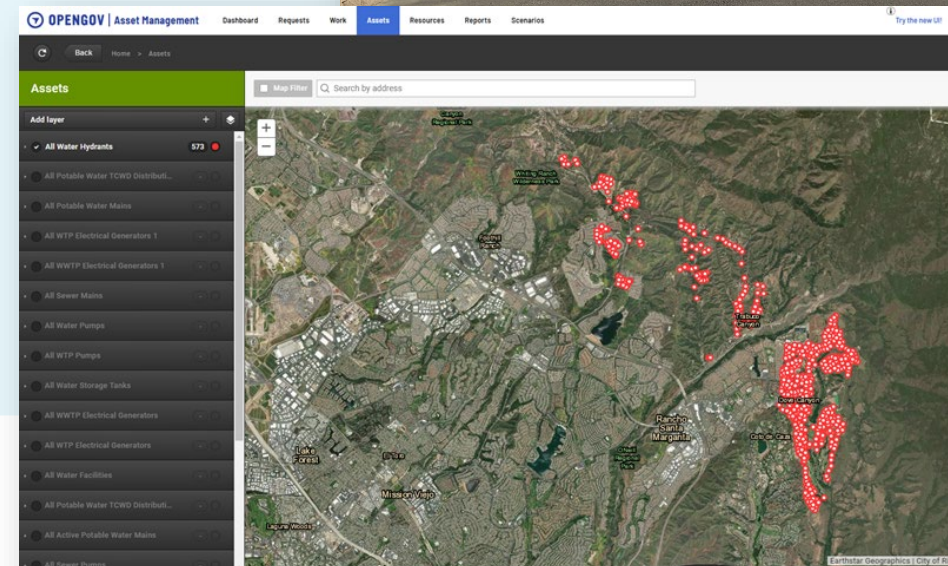
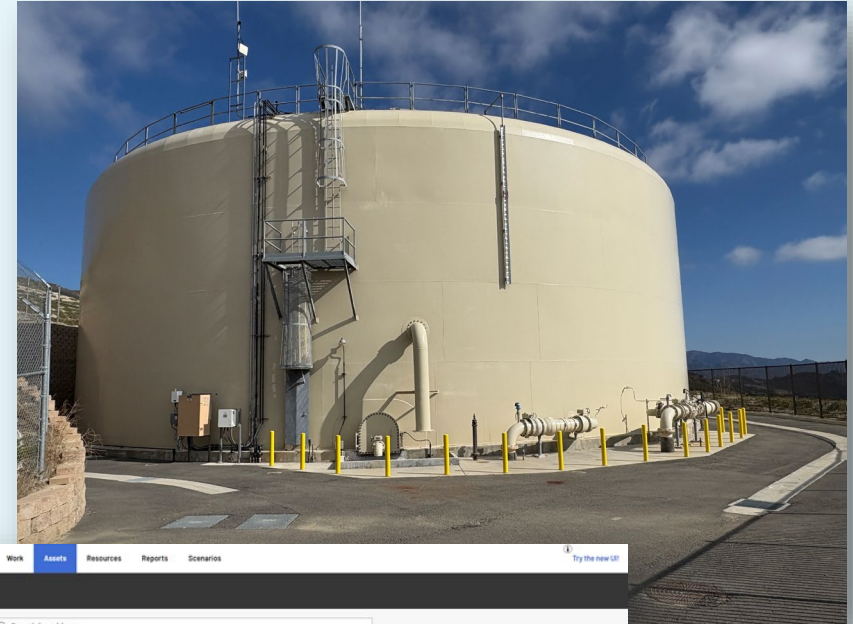
System Preparedness in RSM

Domestic Water

- 3 Reservoirs
- 2 Booster Pump Stations
- Interconnections – SMWD, IRWD, & ETWD

Preventative Maintenance – 2 Year Cycle

- 395 Hydrants
- 720 Distribution System Valves
- 243 Distribution System Blowoffs



System Preparedness in RSM

All water & sewer facilities in RSM have Emergency Backup Power Generation

- Onsite Diesel Generators
- Mobile Generator Weather Switches
- Mobile Generators of all sizes to meet system emergency demands



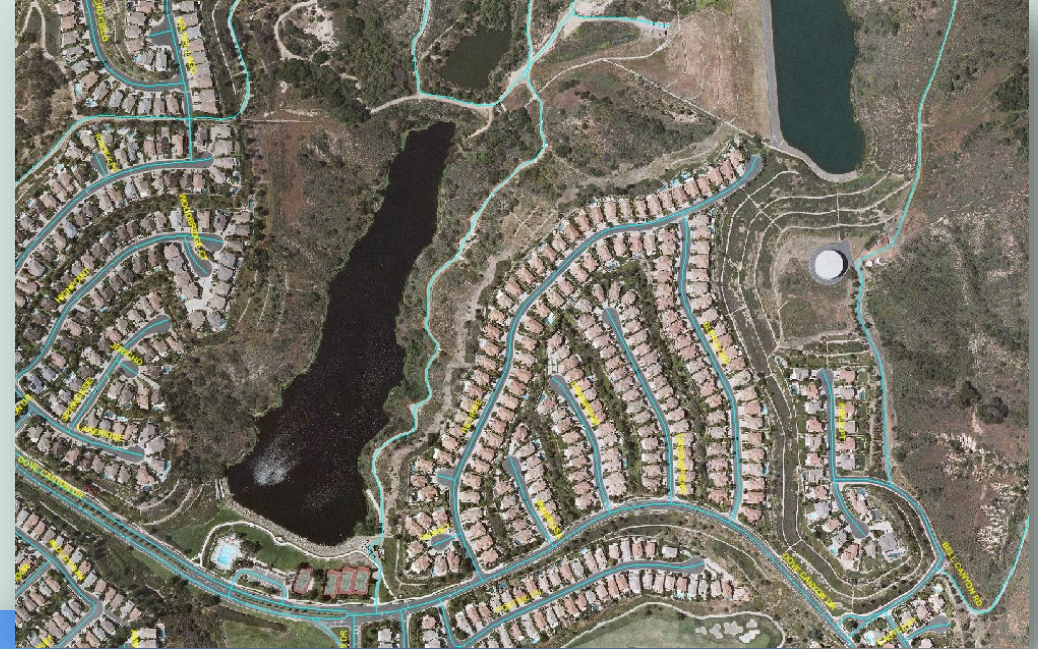
Frequent active collaboration with other water and public safety agencies & cities behind the scenes



System Preparedness in RSM

Recycled Water Storage

- Robinson Ranch Recycled Water Reservoir
145 Acre Feet/47 Million Gallons
- Dove Lake –
331 Acre Feet/108 Million Gallons



WEROC

Water Emergency Response Organization of Orange County

- Emergency Management Cycle Focus
- Facilitates Mutual Aid requests between MWD OC member agencies
- Integrates with the Operational Area Emergency Operations Center (EOC) to ensure continuity of services during emergencies
- Provides specialized training opportunities on Incident Command and Disaster Recovery



An aerial photograph of a mountainous region. In the foreground, there's a large white cylindrical water storage tank on a hillside. Below it, a residential area with houses and trees is visible. The middle ground shows a large, flat, light-colored area, possibly a construction site or a dry lake bed. The background is dominated by steep, rugged mountains under a clear blue sky. The word "QUESTIONS?" is superimposed in large white letters across the center of the image.

QUESTIONS?