



LOCAL HAZARD MITIGATION PLAN (LHMP) UPDATE

THE CITY NEEDS YOUR INPUT!

Take a few minutes to
complete the survey now
surveymonkey.com/r/RSM-LHMP



CONTACT THE CITY

(949) 635-1807

hazardmitigationplan@cityofrsm.org

cityofrsm.org/565/Local-Hazard-Mitigation-Plan

OVERVIEW

The City received Federal Emergency Management Agency (FEMA) grant funding to update the 2019 Local Hazard Mitigation Plan (LHMP). The LHMP develops long-term strategies for protecting people and property from natural and human-induced hazards such as earthquakes, drought, and wildfire.



WHAT IS THE LHMP?

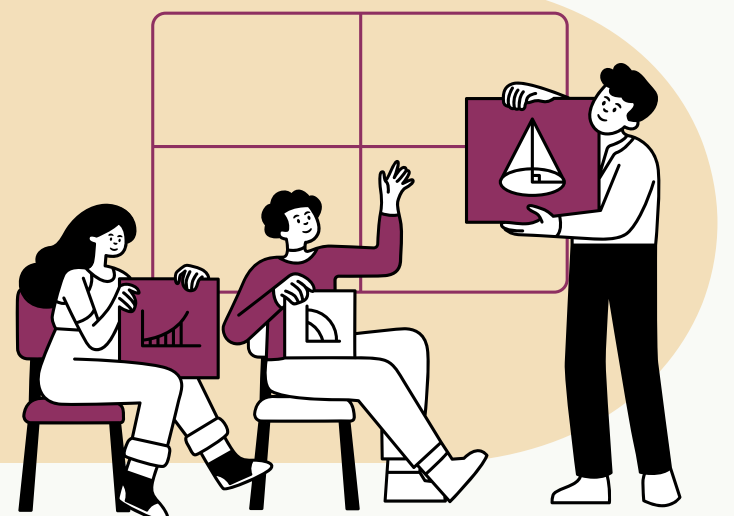
The LHMP helps guide City decisions and develops policies to reduce or eliminate risk to life and property. It identifies the types of hazards that threaten the City, evaluates our vulnerability to those threats, and outlines a strategy to reduce or eliminate the risk posed by those threats and avoid repeated destruction by natural hazard events.

WHY IS THE LHMP IMPORTANT?

The City must have an approved LHMP to receive certain types of FEMA funding which can be used to implement hazard mitigation programs. The LHMP must be updated every 5 years to maintain funding eligibility.

WHAT GOES INTO THE LHMP?

The LHMP assesses the community's risks and vulnerabilities to natural hazard events such as earthquakes, drought, and wildfire. The plan includes a set of goals related to the overall goal of hazard mitigation planning and mitigation actions that will serve to advance the plan goals.



HOW CAN THE PUBLIC BECOME INVOLVED IN THE LHMP PROCESS?

The LHMP Planning Team will consider all input from the public and integrate it into the plan update where appropriate. Opportunities for the community to provide input, ask questions, and review/comment on draft documents will be provided throughout the planning process. Your comments, questions, ideas, and concerns will have a significant role in the plan's update.

