

**CAPISTRANO UNIFIED SCHOOL
DISTRICT
COMMUNITY FACILITIES DISTRICT
No. 88-1**

August 10, 2012

***Public Finance
Facilities Planning
Urban Economics***

Newport Beach

Fresno
Riverside
San Francisco
Chicago
Dallas

**ADMINISTRATION REPORT
FISCAL YEAR 2012-2013**

**CAPISTRANO UNIFIED SCHOOL DISTRICT
COMMUNITY FACILITIES DISTRICT NO. 88-1**

Prepared for

CAPISTRANO UNIFIED SCHOOL DISTRICT
33122 Valle Road
San Juan Capistrano, California 92675

Prepared by

DAVID TAUSSIG & ASSOCIATES, INC.
5000 Birch Street, Suite 6000
Newport Beach, California 92660
(949) 955-1500

Table of Contents

<i>Section</i>	<i>Page</i>
<i>Introduction</i>	1
<i>I. Special Tax Classifications and Development Update</i>	3
Special Tax Classifications	3
Development Update	4
<i>II. Funds and Accounts</i>	5
Description of Funds and Accounts	5
Sources and Uses of Funds	8
Account Balances	9
<i>III. Fiscal Year 2011-2012 Special Tax Levy</i>	10
<i>IV. Fiscal Year 2012-2013 Special Tax Requirement</i>	11
<i>V. Method of Apportionment</i>	13
Maximum Special Tax Rates	13
Apportionment of Special Taxes	14

EXHIBITS

- Exhibit A -** Boundary Map
- Exhibit B -** Summary of Transactions to Funds and Accounts Fiscal Year 2011-2012
- Exhibit C -** Special Tax Roll Fiscal Year 2012-2013

Introduction

This report provides an analysis of the financial and administrative obligations of Community Facilities District No. 88-1 ("CFD No. 88-1") of the Capistrano Unified School District (the "School District") resulting from the sale of the \$12,500,000 Series 1989 Special Tax Bonds (the "1989 Bonds") which were refunded by the sale of the \$12,755,000 Series 1996 Special Tax Refunding Bonds (the "1996 Bonds") issued in May 1996. In addition to refunding the 1989 Bonds, a portion of the proceeds of the 1996 Bonds were used to finance additional facilities for CFD No. 88-1.

CFD No. 88-1 is a legally constituted governmental entity established under the Mello-Roos Community Facilities Act of 1982, (the "Act") as amended. The Act provides an alternative method for the financing of certain public capital facilities and services. Specifically, CFD No. 88-1 is authorized to issue up to \$14,000,000 in bonds and has sold \$12,500,000 in 1989 Bonds plus \$678,513 of new money in the 1996 Bonds. The proceeds from the 1989 and the 1996 Bonds are to be used for the construction of certain elementary and intermediate school facilities necessary for development within the boundaries of the community facilities district.

The bonded indebtedness of CFD No. 88-1 is both secured and repaid through the annual levy and collection of special taxes from all property subject to the tax within the community facilities district. In calculating the special tax liability for fiscal year 2012-2013, this report not only examines the financial obligations of the current fiscal year, but also analyzes the amount of new development which has occurred and the results of the previous fiscal year's levy, including delinquencies.

A map showing the property in CFD No. 88-1 is included in Exhibit A.

This report is organized into the following sections:

Section I

Section I provides an update of the development activity occurring within CFD No. 88-1. All new subdivision and building permit activity is identified, including new cumulative figures for "Developed Property" and "Undeveloped Property."

Section II

Section II examines the financial activity in the funds and accounts established pursuant to the Bond Indenture for the 1996 Bonds between CFD No. 88-1 and the fiscal agent (the "Indenture").

Section III

Section III analyzes the previous fiscal year's special tax levy and includes a discussion of delinquent special taxes.

Section IV

Section IV determines the financial obligations of CFD No. 88-1 for fiscal year 2012-2013 and quantifies the impact of any changes from the original development plans.

Section V

Section V reviews the methodology used to apportion the special tax requirement between Developed Property and Undeveloped Property. A table of the 2012-2013 special tax rates for each classification of property is included.

I. Special Tax Classifications and Development Update

Special Tax Classifications

The methodology employed to calculate and apportion the special tax is contained in a document entitled the Rate and Method of Apportionment of the Special Tax. The Rate and Method of Apportionment defines two categories of property, namely "Developed Property" and "Undeveloped Property." The category of Developed Property is in turn divided into nine separate rate classifications which vary with land use (e.g., residential and commercial) and dwelling unit type and size for residential development. A table of the Developed Property classifications is shown below.

Community Facilities District No. 88-1 Developed Property Classifications

Class	Land Use	Square Footage
1	Single Family Detached	2,400 s.f. or greater
2	Single Family Detached	1,700 - 2,399 s.f.
3	Single Family Detached	Less than 1,700 s.f.
4	Townhouse	More than 1,350 s.f.
5	Townhouse	1,350 s.f. or less
6	Condominium	More than 850 s.f.
7	Condominium	850 s.f. or less
8	Apartment	Not Applicable
9	Commercial/Industrial	Not Applicable

Developed Property is distinguished from Undeveloped Property by the issuance of a building permit. Specifically, property for which a building permit was issued prior to March 1 will be classified as Developed Property in the following fiscal year. For example, all property in CFD No. 88-1 for which building permits were issued prior to March 1, 2012, will be classified as Developed Property in fiscal year 2012-2013. Hence, the development research discussed on the following page focuses on the twelve month time period ending March 1, 2012.

Development Update

CFD No. 88-1 encompasses approximately 762 gross acres of land located in an unincorporated portion of Orange County known as Rancho Santa Margarita.

Background research of City of Rancho Santa Margarita records indicated that as of March 1, 2012, no permits for new residential units had been issued. Therefore, the cumulative number of residential building permits remains at 2,658. As of March 1, 2012 there were 7.25 acres of developed commercial property. In addition, there were two new permits issued for residential additions totaling 552 square feet. There were no tax class changes as a result of the additions. The cumulative amount of "Developed Property" is shown by special tax classification in the following table.

Community Facilities District No. 88-1 Cumulative Developed Property

Class	Land Use	Square Footage	Number of Units/Acres
1	Single Family Detached	2,400 s.f. or greater	358
2	Single Family Detached	1,700 - 2,399 s.f.	531
3	Single Family Detached	Less than 1,700 s.f.	157
4	Townhouse	More than 1,350 s.f.	538
5	Townhouse	1,350 s.f. or less	134
6	Condominium	More than 850 s.f.	821
7	Condominium	850 s.f. or less	119
8	Apartment	Not Applicable	0
9	Commercial/Industrial Acres	Not Applicable	7.25

II. Funds and Accounts

Description of Funds and Accounts

The Indenture established eight funds for CFD No. 88-1. They are the Special Tax Fund, Acquisition and Construction Fund, Administrative Expense Fund, Bond Fund, Redemption Fund, Bond Reserve Fund, Rebate Fund, and Special Reserve Fund. Within the Acquisition and Construction Fund a Cost of Issuance Account and Construction Account were created. The Construction Account includes a Prior Bond Subaccount and a 1996 Bonds Subaccount. Within the Bond Fund two additional accounts, Interest and Principal Accounts, were created. All funds, accounts, and subaccounts for CFD No. 88-1 are shown in Chart 1.

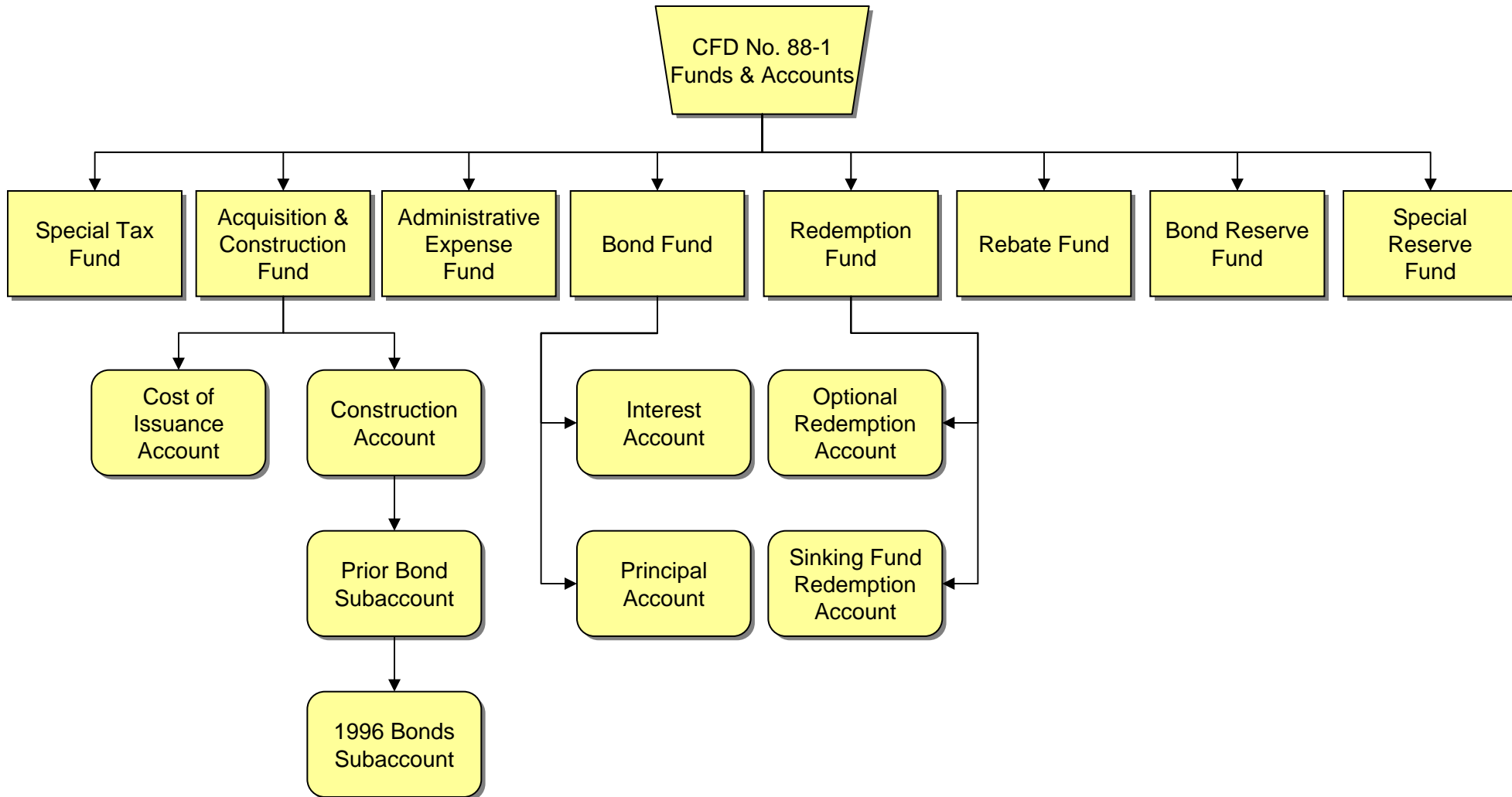
All special tax receipts are deposited in the Special Tax Fund. Monies in the Special Tax Fund are allocated based on the priority set forth below (see Chart 2):

1. **Administrative Expense Account of the Special Tax Fund** - an amount necessary to defray the School District's cost of administering CFD No. 88-1 for the fiscal year;
2. **Interest Account of the Bond Fund** - an amount sufficient to make the interest payment on the next succeeding Interest Payment Date;
3. **Principal Account of the Bond Fund** - an amount sufficient to make the principal payment due on the following September 1;
4. **Sinking Fund Redemption Account of the Redemption Fund** - an amount sufficient to make any Sinking Fund Payments due on the Bonds for the fiscal year as well as any principal and premium payments due in relation to the School District's optional redemption of the Bonds;
5. **Bond Reserve Fund** - any amount that may be necessary to replenish this account to the Reserve Requirement;
6. **Rebate Fund** - any money owed to the Department of the Treasury of the United States of America due to the calculation of Excess Investment Earnings in accordance with section 3.08 of the Resolution, and;
7. **Special Reserve Fund** - all money remaining in the Special Tax Fund after the above six disbursements are made will be transferred to the Special Reserve Fund.

**Capistrano Unified School District
Community Facilities District No. 88-1**

Series 1996

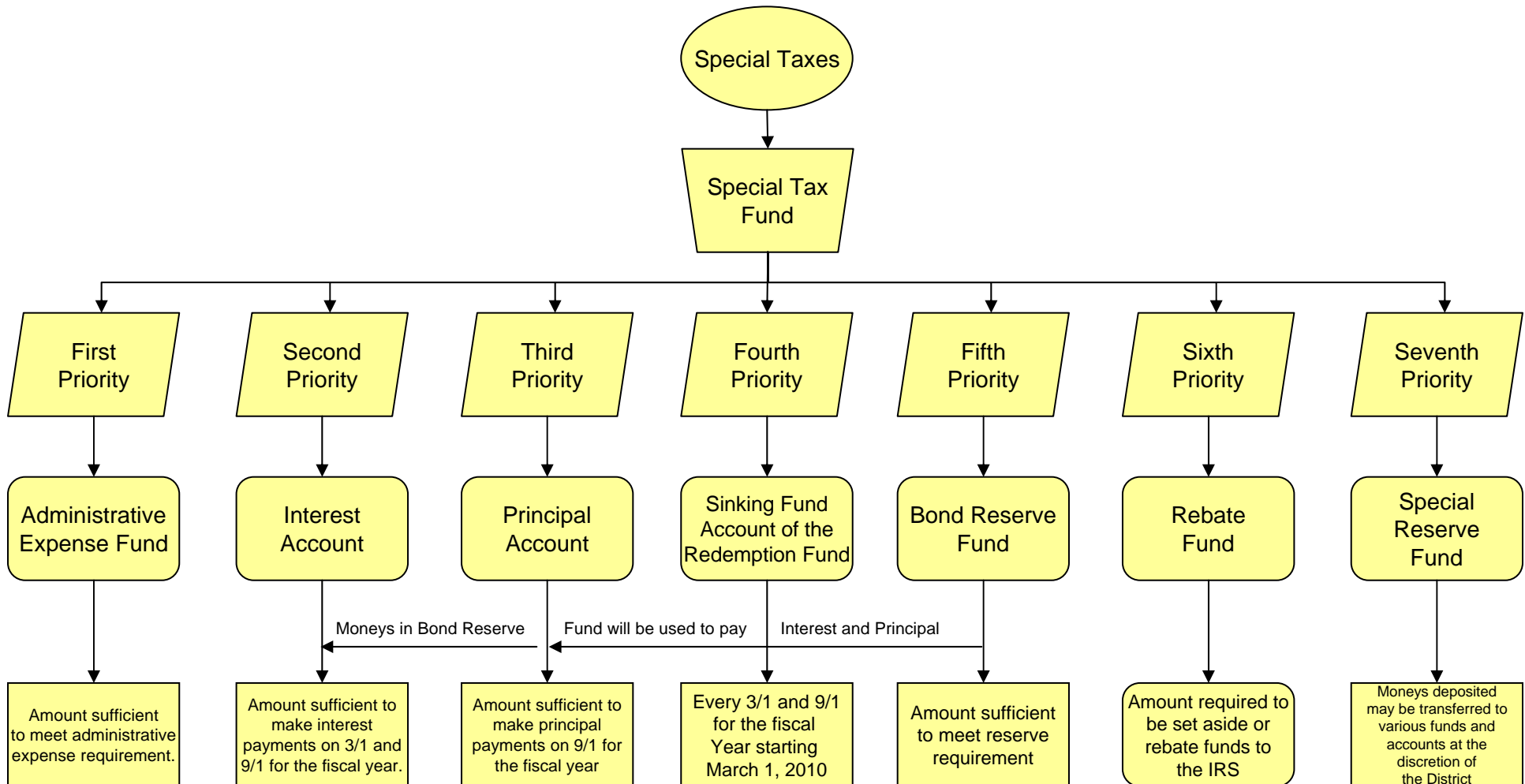
Funds and Accounts



**Capistrano Unified School District
Community Facilities District No. 88-1**

Series 1996

Flow of Funds Diagram



The Reserve Requirement is an amount equal to the lesser of (i) ten percent (10.00%) of the original proceeds of the Bonds, (ii) maximum annual debt service on the Bonds, or (iii) one hundred twenty-five percent (125.00%) of the average annual debt service on the Bonds. Fifty percent (50%) of the Reserve Requirement for the 1996 Bonds is deemed satisfied by the provision by the bond insurer of the Municipal Bond Debt Service Reserve Insurance Policy.

The Acquisition and Construction Fund is used exclusively to pay project costs and cost of issuance for the Bonds. Upon final payment of these, the Fiscal Agent will transfer any remaining money in these funds to the Special Tax Fund or the Redemption Fund.

Money held in any of the aforementioned funds, accounts and subaccounts can be invested by the Fiscal Agent at the direction of the School District and in conformance with the limitations set forth in the Indenture. Investment interest earnings, if any, will generally be credited to the fund or account for which the investment was made. To the extent that this rule is not applicable, investment interest earned will be applied to the Interest Account of the Bond Fund.

Sources and Uses of Funds

CFD No. 88-1's sources of funds for the 1996 Bonds for fiscal year 2011-2012 totaled \$1,558,463 and as expected, consisted of special taxes and investment earnings. Special taxes received as of June 30, 2012, equaled \$1,515,436. Investment agreement earnings equaled \$42,976 and interest earnings not in investment agreements equaled \$51. All investment earnings are shown separately for each account in the table below.

Table of Interest Earnings

Special Tax Fund	\$10
Acquisition and Construction Fund	
1996 Bonds Construction Account	\$0
Prior Bonds Construction Account	\$0
Cost of Issuance Account	\$0
Administrative Expense Fund	\$0
Bond Fund	
Interest Account	\$0
Principal Account	\$15
Redemption Fund	\$0
Bond Reserve Fund	\$42,976
Rebate Fund	\$0
Special Reserve Fund	\$22

Total uses of funds for the 1996 Bonds for fiscal year 2011-2012 equaled \$1,375,627. Payment of debt service comprised the majority of CFD No. 88-1's uses of funds. Interest and principal payments on the bonds equaled \$274,625 and \$1,040,000, respectively. Expenses for professional services incurred by CFD No. 88-1 equaled \$61,002.

A detailed analysis of all transactions within these funds and accounts for the 2011-2012 fiscal year is included as Exhibit B.

Account Balances

At the close of fiscal year 2011-2012, the various funds and accounts established by the 1996 Resolution had the following balances:

Special Tax Fund	\$814,848
Acquisition and Construction Fund	
1996 Bonds Construction Account	\$0
Prior Bonds Construction Account	\$0
Cost of Issuance Account	\$0
Administrative Expense Fund	\$139,103
Bond Fund	
Interest Account	\$0
Principal Account	\$567,515
Redemption Fund	\$0
Bond Reserve Fund	\$637,750
Rebate Fund	\$3,347
Special Reserve Fund	\$846,481

III. Fiscal Year 2011-2012 Special Tax Levy

The aggregate special tax levy for fiscal year 2011-2012 equaled \$1,525,416. As of August 3, 2012, \$1,512,580 in special taxes had been collected by the County. The remaining \$12,836 in special taxes are delinquent, resulting in a delinquency rate of 0.84 percent.

As a participant in the Teeter Program, the School District will receive an apportionment from the County equal to the delinquent unpaid special taxes for fiscal year 2011-2012. This apportionment is anticipated to occur early in fiscal year 2012-2013.

In addition to the Teeter Program, CFD No. 88-1 has covenanted to commence foreclosure proceedings against (i) parcels with delinquent special taxes in excess of \$2,500 and (ii) all properties with delinquent special taxes if the delinquency rates exceed five percent (5.00%). Notwithstanding the foregoing, CFD No. 88-1 may elect to defer foreclosure proceedings on any parcel which is owned by a delinquent property owner whose property is not, in the aggregate, delinquent in the payment of special taxes in an amount in excess of \$2,500 and the amount in the Reserve Account is at least equal to the Reserve Requirement.

Based on the current level of delinquencies, no foreclosure action is required.

IV. Fiscal Year 2012-2013 Special Tax Requirement

CFD No. 88-1's special tax requirement for fiscal year 2012-2013 is equal to \$1,509,092 and is calculated as follows:

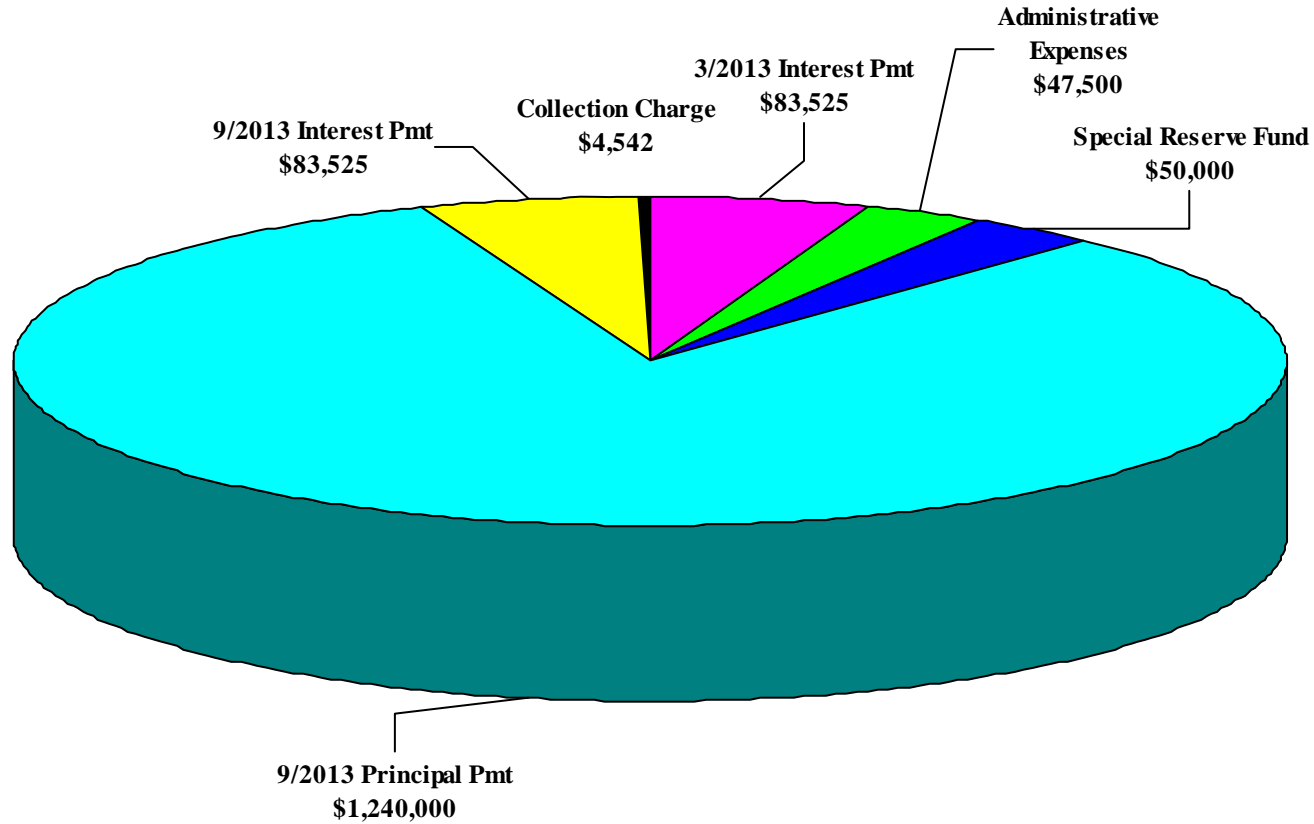
**Community Facilities District No. 88-1
Fiscal Year 2012-2013 Special Tax Requirement**

Fund Balances as of June 30, 2012		\$1,382,363
Special Tax Fund	\$814,848	
Interest Account	\$0	
Principal Account	\$567,515	
Surplus Monies in the Reserve Fund	\$0	
Remaining Fiscal Year 2011-2012 Sources of Funds		\$34,648
Teeter and Final Paid Apportionment	\$34,648	
Remaining Fiscal Year 2011-2012 Obligations		(\$1,417,011)
Interest Due September 1, 2012	(\$120,413)	
Principal Due September 1, 2012	(\$1,135,000)	
Administrative Expenses	(\$95,000)	
Special Reserve Fund	(\$66,599)	
Fiscal Year 2011-2012 Surplus / (Draw on Reserve Fund)		\$0
Fiscal Year 2012-2013 Obligations		(\$1,509,092)
Interest Due March 1, 2013	(\$83,525)	
Interest Due September 1, 2013	(\$83,525)	
Principal Due September 1, 2013	(\$1,240,000)	
County Collection Charge	(\$4,542)	
Administration Expenses	(\$47,500)	
Special Reserve Fund (Pay-As-You-Go)	(\$50,000)	
Fiscal Year 2012-2013 Special Tax Requirement		(\$1,509,092)

The components of the fiscal year 2012-2013 special tax requirement are shown graphically on the following page.

Community Facilities District No. 88-1 of the Capistrano Unified School District

Fiscal Year 2012-2013 Special Tax Levy



FY 2012-2013 Gross Special Tax Requirement = \$1,509,092

V. Method of Apportionment

Maximum Special Tax Rates

The amount of special taxes that CFD No. 88-1 may levy is strictly limited by the maximum rates set forth in the Rate and Method of Apportionment. The initial maximum special tax rates for both Developed Property and Undeveloped Property are specified in Section II of the Rate and Method of Apportionment.¹ Initial maximum rates for Developed Property are subject to an annual increase commencing July 1, 1989, at a rate of 6.0 percent per year until the time a building permit is issued and 4.0 percent per year thereafter. Average fiscal year 2012-2013 maximum special tax rates are shown in the following table:

**Community Facilities District No. 88-1
Fiscal Year 2012-2013 Maximum Special Tax Rates
Developed Property and Undeveloped Property**

Class	Land Use	Square Footage	FY 2012-2013 Maximum Special Tax *
1	Single Family Detached	2,400 s.f. or greater	\$1,586.48
2	Single Family Detached	1,700 - 2,399 s.f.	\$1,187.00
3	Single Family Detached	Less than 1,700 s.f.	\$1,134.88
4	Townhouse	More than 1,350 s.f.	\$1,026.95
5	Townhouse	1,350 s.f. or less	\$853.39
6	Condominium	More than 850 s.f.	\$705.29
7	Condominium	850 s.f. or less	\$553.17
8	Apartment	Not Applicable	NA
9	Commercial/Industrial Acre	Not Applicable	\$6,537.27
NA	Undeveloped Acre	Not Applicable	NA

* Represents average maximum special tax for each class of Developed Property.

¹ Technically, Section II states that the maximum special tax for a parcel of Developed Property is equal to the greater of (i) the "Base Maximum Special Tax" or (ii) the Assigned Special Tax. The Base Maximum Special Tax was established for the contingency of a shortfall in revenues resulting from significant changes in development densities. Since the actual density of development is consistent with original projections, the contingency for which the Base Maximum Special Tax was established does not exist and hence, all discussion of maximum tax rates for developed property focuses on the Assigned Special Tax.

Apportionment of Special Taxes

The amount of special tax that is apportioned to each parcel is determined through the application of Section III of the Rate and Method of Apportionment. Section III apportions the special tax requirement in three steps which prioritize the order in which Developed Property and Undeveloped Property are taxed.

The first step states that the special tax shall be levied at up to 100% of the maximum per unit and per acre rates on all classes of Developed Properties.

If the special taxes raised pursuant to the first step are less than the special tax requirement, then the second step will be applied as well. The second step states that the special tax shall be levied on Undeveloped Property at up to 100% of the applicable maximum rate.

Step three is designed to accommodate changes in land use and is intended to be used as a last resort. Since the actual number and distribution of units have not substantially deviated from the original projection, this final step is not necessary.

Application of the maximum rates under the first step yields aggregate special tax revenues of \$2,735,539, which is more than sufficient to meet all obligations for CFD No. 88-1 for fiscal year 2012-2013 as outlined in Section IV. Therefore, the fiscal year 2012-2013 special tax for each parcel of developed property is equal to approximately 55.2 percent of the maximum special tax. The fiscal year 2012-2013 average special tax rates are shown for each classification of Developed Property in the table below and graphically on the following page. The Special Tax Roll which lists the actual special tax levied against each parcel is shown in Exhibit C.

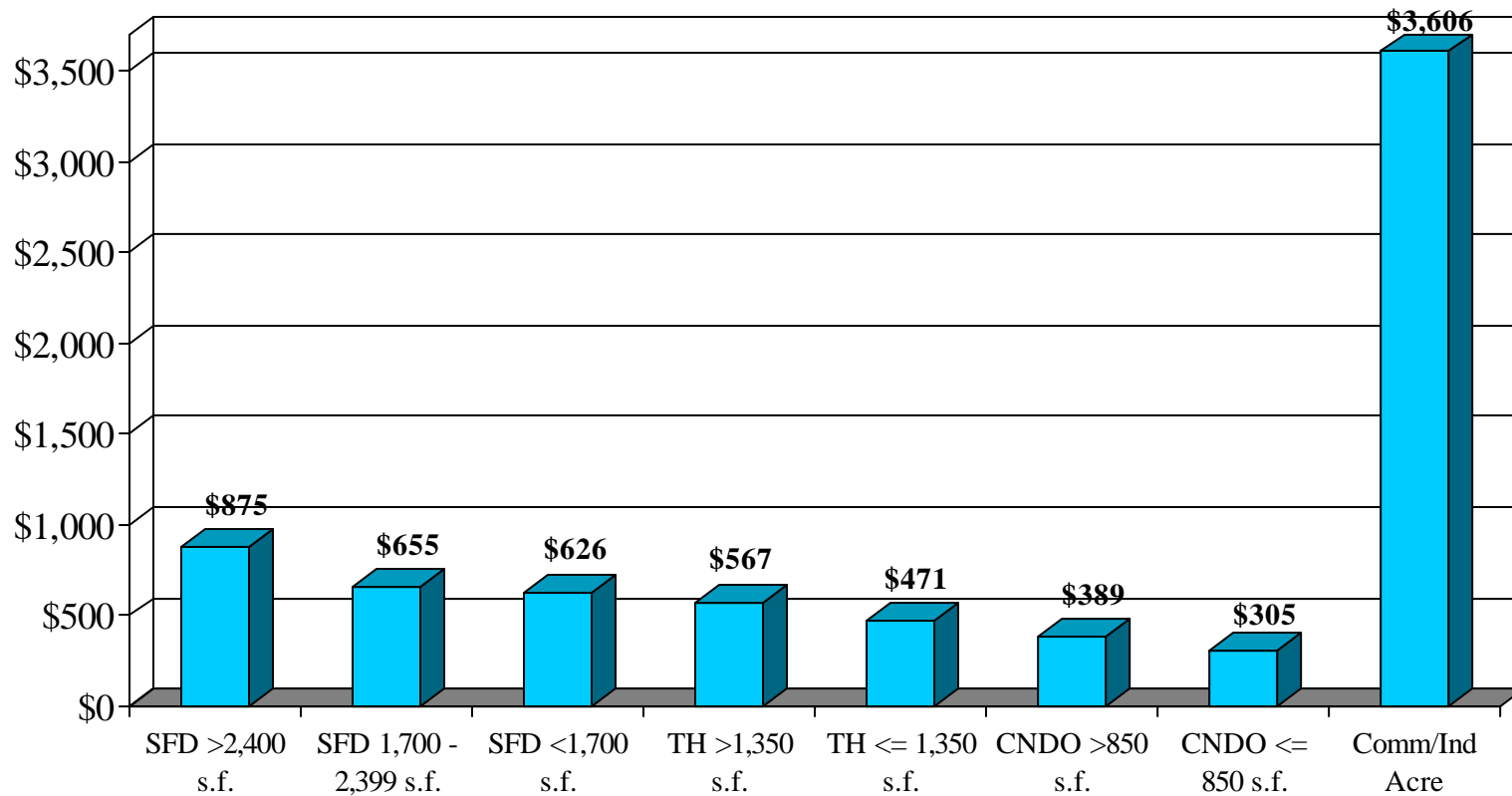
**Community Facilities District No. 88-1
Fiscal Year 2012-2013 Special Tax Rates
Developed Property and Undeveloped Property**

Class	Land Use	Square Footage	FY 2012-2013 Special Tax *
1	Single Family Detached	2,400 s.f. or greater	\$875.20
2	Single Family Detached	1,700 - 2,399 s.f.	\$654.82
3	Single Family Detached	Less than 1,700 s.f.	\$626.07
4	Townhouse	More than 1,350 s.f.	\$566.53
5	Townhouse	1,350 s.f. or less	\$470.78
6	Condominium	More than 850 s.f.	\$389.08
7	Condominium	850 s.f. or less	\$305.16
8	Apartment	Not Applicable	\$0.00
9	Commercial/Industrial Acre	Not Applicable	\$3,606.36
NA	Undeveloped Acre	Not Applicable	\$0.00

* Represents average special tax for each class of Developed Property.

Community Facilities District No. 88-1 of the Capistrano Unified School District

*Fiscal Year 2012-2013 Special Tax Levy Residential and Commercial Development**



* Represents average special tax for each category

EXHIBIT A

***CFD No. 88-1 of the
Capistrano Unified School District***

Boundary Map

**Capistrano Unified School District
Community Facilities District No. 88-1**



© 2011 Google

33°37'40.00" N 117°37'16.36" W elev 777 ft

EXHIBIT B

***CFD No. 88-1 of the
Capistrano Unified School District***

***Summary of Transactions to
Funds and Accounts***

COMMUNITY FACILITIES DISTRICT NO. 88-1 OF THE CAPISTRANO UNIFIED SCHOOL DISTRICT
SERIES 1996 BONDS
FISCAL YEAR 2011-2012

	CONSTRUCTION ACCOUNT - 1996 BONDS	CONSTRUCTION ACCOUNT - PRIOR BONDS	ADMINISTRATIVE EXPENSE FUND	BOND RESERVE FUND	COST OF ISSUANCE	INTEREST ACCOUNT	PRINCIPAL ACCOUNT	SINKING REDEMPTION ACCOUNT	SPECIAL RESERVE FUND	OPTIONAL REDEMPTION ACCOUNT	REBATE FUND	SPECIAL TAX FUND	TOTAL
BEGINNING BALANCE	\$0	\$0	\$83,250	\$637,750	\$0	\$0	\$520,005	\$0	\$223,896	\$0	\$3,347	\$1,357,962	\$2,826,209
SOURCES OF FUNDS													
SPECIAL TAX RECEIPTS	\$0	\$0	\$0	\$0	\$0	\$0	\$0	\$0	\$0	\$0	\$0	\$1,515,436	\$1,515,436
INVESTMENT AGREEMENT EARNINGS	\$0	\$0	\$0	\$42,976	\$0	\$0	\$0	\$0	\$0	\$0	\$0	\$0	\$42,976
OTHER INVESTMENT EARNINGS	\$0	\$0	\$4	\$0	\$0	\$0	\$15	\$0	\$22	\$0	\$0	\$10	\$51
ACCRUED INTEREST	\$0	\$0	\$0	\$0	\$0	\$0	\$0	\$0	\$0	\$0	\$0	\$0	\$0
<u>MISCELLANEOUS</u>	<u>\$0</u>	<u>\$0</u>	<u>\$0</u>	<u>\$0</u>	<u>\$0</u>	<u>\$0</u>	<u>\$0</u>	<u>\$0</u>	<u>\$0</u>	<u>\$0</u>	<u>\$0</u>	<u>\$0</u>	<u>\$0</u>
TOTAL SOURCES	\$0	\$0	\$4	\$42,976	\$0	\$0	\$15	\$0	\$22	\$0	\$0	\$1,515,446	\$1,558,463
USES OF FUNDS													
INTEREST PAYMENTS	\$0	\$0	\$0	\$0	\$0	(\$274,625)	\$0	\$0	\$0	\$0	\$0	\$0	(\$274,625)
PRINCIPAL PAYMENTS	\$0	\$0	\$0	\$0	\$0	\$0	(\$1,040,000)	\$0	\$0	\$0	\$0	\$0	(\$1,040,000)
PUBLIC FACILITIES	\$0	\$0	\$0	\$0	\$0	\$0	\$0	\$0	\$0	\$0	\$0	\$0	\$0
PROFESSIONAL SERVICES	\$0	\$0	(\$39,150)	\$0	\$0	\$0	\$0	\$0	(\$21,852)	\$0	\$0	\$0	(\$61,002)
ACCRUED INTEREST	\$0	\$0	\$0	\$0	\$0	\$0	\$0	\$0	\$0	\$0	\$0	\$0	\$0
<u>MISCELLANEOUS</u>	<u>\$0</u>	<u>\$0</u>	<u>\$0</u>	<u>\$0</u>	<u>\$0</u>	<u>\$0</u>	<u>\$0</u>	<u>\$0</u>	<u>\$0</u>	<u>\$0</u>	<u>\$0</u>	<u>\$0</u>	<u>\$0</u>
TOTAL USES	\$0	\$0	(\$39,150)	\$0	\$0	(\$274,625)	(\$1,040,000)	\$0	(\$21,852)	\$0	\$0	\$0	(\$1,375,627)
TRANSFERS	\$0	\$0	\$95,000	(\$42,976)	\$0	\$274,625	\$1,087,495	\$0	\$644,415	\$0	\$0	(\$2,058,559)	\$0
ENDING BALANCE	\$0	\$0	\$139,103	\$637,750	\$0	\$0	\$567,515	\$0	\$846,481	\$0	\$3,347	\$814,848	\$3,009,045

Reserve Requirement: \$637,750
PRINTED: 08/02/12 14:42

COMMUNITY FACILITIES DISTRICT NO. 88-1 OF THE CAPISTRANO UNIFIED SCHOOL DISTRICT
SERIES 1996 BONDS
July 2011

	CONSTRUCTION ACCOUNT - 1996 BONDS	CONSTRUCTION ACCOUNT - PRIOR BONDS	ADMINISTRATIVE EXPENSE FUND	BOND RESERVE FUND	COST OF ISSUANCE	INTEREST ACCOUNT	PRINCIPAL ACCOUNT	SINKING REDEMPTION ACCOUNT	SPECIAL RESERVE FUND	OPTIONAL REDEMPTION ACCOUNT	REBATE FUND	SPECIAL TAX FUND	TOTAL
BEGINNING BALANCE	\$0	\$0	\$83,250	\$637,750	\$0	\$0	\$520,005	\$0	\$223,896	\$0	\$3,347	\$1,357,962	\$2,826,209
SOURCES OF FUNDS													
SPECIAL TAX RECEIPTS	\$0	\$0	\$0	\$0	\$0	\$0	\$0	\$0	\$0	\$0	\$0	\$0	\$0
INVESTMENT AGREEMENT EARNINGS	\$0	\$0	\$0	\$0	\$0	\$0	\$0	\$0	\$0	\$0	\$0	\$0	\$0
OTHER INVESTMENT EARNINGS	\$0	\$0	\$0	\$0	\$0	\$0	\$0	\$0	\$0	\$0	\$0	\$0	\$0
ACCRUED INTEREST	\$0	\$0	\$0	\$0	\$0	\$0	\$0	\$0	\$0	\$0	\$0	\$0	\$0
<u>MISCELLANEOUS</u>	\$0	\$0	\$0	\$0	\$0	\$0	\$0	\$0	\$0	\$0	\$0	\$0	\$0
TOTAL SOURCES	\$0	\$0	\$0	\$0	\$0	\$0	\$0	\$0	\$0	\$0	\$0	\$0	\$0
USES OF FUNDS													
INTEREST PAYMENTS	\$0	\$0	\$0	\$0	\$0	\$0	\$0	\$0	\$0	\$0	\$0	\$0	\$0
PRINCIPAL PAYMENTS	\$0	\$0	\$0	\$0	\$0	\$0	\$0	\$0	\$0	\$0	\$0	\$0	\$0
PUBLIC FACILITIES	\$0	\$0	\$0	\$0	\$0	\$0	\$0	\$0	\$0	\$0	\$0	\$0	\$0
PROFESSIONAL SERVICES	\$0	\$0	\$0	\$0	\$0	\$0	\$0	\$0	\$0	\$0	\$0	\$0	\$0
ACCRUED INTEREST	\$0	\$0	\$0	\$0	\$0	\$0	\$0	\$0	\$0	\$0	\$0	\$0	\$0
<u>MISCELLANEOUS</u>	\$0	\$0	\$0	\$0	\$0	\$0	\$0	\$0	\$0	\$0	\$0	\$0	\$0
TOTAL USES	\$0	\$0	\$0	\$0	\$0	\$0	\$0	\$0	\$0	\$0	\$0	\$0	\$0
TRANSFERS	\$0	\$0	\$0	\$0	\$0	\$0	\$0	\$0	\$566,028	\$0	\$0	(\$566,028)	\$0
ENDING BALANCE	\$0	\$0	\$83,250	\$637,750	\$0	\$0	\$520,005	\$0	\$789,924	\$0	\$3,347	\$791,934	\$2,826,209

Reserve Requirement: \$637,750

PRINTED: 08/02/12

14:40

PAGE:7

COMMUNITY FACILITIES DISTRICT NO. 88-1 OF THE CAPISTRANO UNIFIED SCHOOL DISTRICT
SERIES 1996 BONDS
August 2011

	CONSTRUCTION ACCOUNT - 1996 BONDS	CONSTRUCTION ACCOUNT - PRIOR BONDS	ADMINISTRATIVE EXPENSE FUND	BOND RESERVE FUND	COST OF ISSUANCE	INTEREST ACCOUNT	PRINCIPAL ACCOUNT	SINKING REDEMPTION ACCOUNT	SPECIAL RESERVE FUND	OPTIONAL REDEMPTION ACCOUNT	REBATE FUND	SPECIAL TAX FUND	TOTAL
BEGINNING BALANCE	\$0	\$0	\$83,250	\$637,750	\$0	\$0	\$520,005	\$0	\$789,924	\$0	\$3,347	\$791,934	\$2,826,209
SOURCES OF FUNDS													
SPECIAL TAX RECEIPTS	\$0	\$0	\$0	\$0	\$0	\$0	\$0	\$0	\$0	\$0	\$0	\$33,994	\$33,994
INVESTMENT AGREEMENT EARNINGS	\$0	\$0	\$0	\$0	\$0	\$0	\$0	\$0	\$0	\$0	\$0	\$0	\$0
OTHER INVESTMENT EARNINGS	\$0	\$0	\$0	\$0	\$0	\$0	\$0	\$0	\$0	\$0	\$0	\$0	\$0
ACCRUED INTEREST	\$0	\$0	\$0	\$0	\$0	\$0	\$0	\$0	\$0	\$0	\$0	\$0	\$0
<u>MISCELLANEOUS</u>	<u>\$0</u>	<u>\$0</u>	<u>\$0</u>	<u>\$0</u>	<u>\$0</u>	<u>\$0</u>	<u>\$0</u>	<u>\$0</u>	<u>\$0</u>	<u>\$0</u>	<u>\$0</u>	<u>\$0</u>	<u>\$0</u>
TOTAL SOURCES	\$0	\$0	\$0	\$0	\$0	\$0	\$0	\$0	\$0	\$0	\$0	\$33,994	\$33,994
USES OF FUNDS													
INTEREST PAYMENTS	\$0	\$0	\$0	\$0	\$0	\$0	\$0	\$0	\$0	\$0	\$0	\$0	\$0
PRINCIPAL PAYMENTS	\$0	\$0	\$0	\$0	\$0	\$0	\$0	\$0	\$0	\$0	\$0	\$0	\$0
PUBLIC FACILITIES	\$0	\$0	\$0	\$0	\$0	\$0	\$0	\$0	\$0	\$0	\$0	\$0	\$0
PROFESSIONAL SERVICES	\$0	\$0	(\$35,789)	\$0	\$0	\$0	\$0	\$0	\$0	\$0	\$0	\$0	(\$35,789)
ACCRUED INTEREST	\$0	\$0	\$0	\$0	\$0	\$0	\$0	\$0	\$0	\$0	\$0	\$0	\$0
<u>MISCELLANEOUS</u>	<u>\$0</u>	<u>\$0</u>	<u>\$0</u>	<u>\$0</u>	<u>\$0</u>	<u>\$0</u>	<u>\$0</u>	<u>\$0</u>	<u>\$0</u>	<u>\$0</u>	<u>\$0</u>	<u>\$0</u>	<u>\$0</u>
TOTAL USES	\$0	\$0	(\$35,789)	\$0	\$0	\$0	\$0	\$0	\$0	\$0	\$0	\$0	(\$35,789)
TRANSFERS	\$0	\$0	\$0	\$0	\$0	\$0	\$0	\$0	\$0	\$0	\$0	\$0	\$0
ENDING BALANCE	\$0	\$0	\$47,461	\$637,750	\$0	\$0	\$520,005	\$0	\$789,924	\$0	\$3,347	\$825,928	\$2,824,414

Reserve Requirement: \$637,750

PRINTED: 08/02/12 14:40

PAGE:8

COMMUNITY FACILITIES DISTRICT NO. 88-1 OF THE CAPISTRANO UNIFIED SCHOOL DISTRICT
SERIES 1996 BONDS
September 2011

	CONSTRUCTION ACCOUNT - 1996 BONDS	CONSTRUCTION ACCOUNT - PRIOR BONDS	ADMINISTRATIVE EXPENSE FUND	BOND RESERVE FUND	COST OF ISSUANCE	INTEREST ACCOUNT	PRINCIPAL ACCOUNT	SINKING REDEMPTION ACCOUNT	SPECIAL RESERVE FUND	OPTIONAL REDEMPTION ACCOUNT	REBATE FUND	SPECIAL TAX FUND	TOTAL
BEGINNING BALANCE	\$0	\$0	\$47,461	\$637,750	\$0	\$0	\$520,005	\$0	\$789,924	\$0	\$3,347	\$825,928	\$2,824,414
SOURCES OF FUNDS													
SPECIAL TAX RECEIPTS	\$0	\$0	\$0	\$0	\$0	\$0	\$0	\$0	\$0	\$0	\$0	\$0	\$0
INVESTMENT AGREEMENT EARNINGS	\$0	\$0	\$0	\$21,666	\$0	\$0	\$0	\$0	\$0	\$0	\$0	\$0	\$21,666
OTHER INVESTMENT EARNINGS	\$0	\$0	\$0	\$0	\$0	\$0	\$0	\$0	\$0	\$0	\$0	\$0	\$0
ACCRUED INTEREST	\$0	\$0	\$0	\$0	\$0	\$0	\$0	\$0	\$0	\$0	\$0	\$0	\$0
<u>MISCELLANEOUS</u>	\$0	\$0	\$0	\$0	\$0	\$0	\$0	\$0	\$0	\$0	\$0	\$0	\$0
TOTAL SOURCES	\$0	\$0	\$0	\$21,666	\$0	\$0	\$0	\$0	\$0	\$0	\$0	\$0	\$21,666
USES OF FUNDS													
INTEREST PAYMENTS	\$0	\$0	\$0	\$0	\$0	(\$154,213)	\$0	\$0	\$0	\$0	\$0	\$0	(\$154,213)
PRINCIPAL PAYMENTS	\$0	\$0	\$0	\$0	\$0	\$0	(\$1,040,000)	\$0	\$0	\$0	\$0	\$0	(\$1,040,000)
PUBLIC FACILITIES	\$0	\$0	\$0	\$0	\$0	\$0	\$0	\$0	\$0	\$0	\$0	\$0	\$0
PROFESSIONAL SERVICES	\$0	\$0	(\$19)	\$0	\$0	\$0	\$0	\$0	\$0	\$0	\$0	\$0	(\$19)
ACCRUED INTEREST	\$0	\$0	\$0	\$0	\$0	\$0	\$0	\$0	\$0	\$0	\$0	\$0	\$0
<u>MISCELLANEOUS</u>	\$0	\$0	\$0	\$0	\$0	\$0	\$0	\$0	\$0	\$0	\$0	\$0	\$0
TOTAL USES	\$0	\$0	(\$19)	\$0	\$0	(\$154,213)	(\$1,040,000)	\$0	\$0	\$0	\$0	\$0	(\$1,194,231)
TRANSFERS	\$0	\$0	\$0	(\$21,666)	\$0	\$154,213	\$519,995	\$0	\$0	\$0	\$0	(\$652,541)	\$0
ENDING BALANCE	\$0	\$0	\$47,442	\$637,750	\$0	\$0	\$0	\$0	\$789,924	\$0	\$3,347	\$173,387	\$1,651,850

Reserve Requirement: \$637,750

PRINTED: 08/02/12 14:40

PAGE:9

COMMUNITY FACILITIES DISTRICT NO. 88-1 OF THE CAPISTRANO UNIFIED SCHOOL DISTRICT
SERIES 1996 BONDS
October 2011

	CONSTRUCTION ACCOUNT - 1996 BONDS	CONSTRUCTION ACCOUNT - PRIOR BONDS	ADMINISTRATIVE EXPENSE FUND	BOND RESERVE FUND	COST OF ISSUANCE	INTEREST ACCOUNT	PRINCIPAL ACCOUNT	SINKING REDEMPTION ACCOUNT	SPECIAL RESERVE FUND	OPTIONAL REDEMPTION ACCOUNT	REBATE FUND	SPECIAL TAX FUND	TOTAL
BEGINNING BALANCE	\$0	\$0	\$47,442	\$637,750	\$0	\$0	\$0	\$0	\$789,924	\$0	\$3,347	\$173,387	\$1,651,850
SOURCES OF FUNDS													
SPECIAL TAX RECEIPTS	\$0	\$0	\$0	\$0	\$0	\$0	\$0	\$0	\$0	\$0	\$0	\$0	\$0
INVESTMENT AGREEMENT EARNINGS	\$0	\$0	\$0	\$0	\$0	\$0	\$0	\$0	\$0	\$0	\$0	\$0	\$0
OTHER INVESTMENT EARNINGS	\$0	\$0	\$0	\$0	\$0	\$0	\$0	\$0	\$0	\$0	\$0	\$0	\$0
ACCRUED INTEREST	\$0	\$0	\$0	\$0	\$0	\$0	\$0	\$0	\$0	\$0	\$0	\$0	\$0
<u>MISCELLANEOUS</u>	\$0	\$0	\$0	\$0	\$0	\$0	\$0	\$0	\$0	\$0	\$0	\$0	\$0
TOTAL SOURCES	\$0	\$0	\$0	\$0	\$0	\$0	\$0	\$0	\$0	\$0	\$0	\$0	\$0
USES OF FUNDS													
INTEREST PAYMENTS	\$0	\$0	\$0	\$0	\$0	\$0	\$0	\$0	\$0	\$0	\$0	\$0	\$0
PRINCIPAL PAYMENTS	\$0	\$0	\$0	\$0	\$0	\$0	\$0	\$0	\$0	\$0	\$0	\$0	\$0
PUBLIC FACILITIES	\$0	\$0	\$0	\$0	\$0	\$0	\$0	\$0	\$0	\$0	\$0	\$0	\$0
PROFESSIONAL SERVICES	\$0	\$0	(\$2,000)	\$0	\$0	\$0	\$0	\$0	\$0	\$0	\$0	\$0	(\$2,000)
ACCRUED INTEREST	\$0	\$0	\$0	\$0	\$0	\$0	\$0	\$0	\$0	\$0	\$0	\$0	\$0
<u>MISCELLANEOUS</u>	\$0	\$0	\$0	\$0	\$0	\$0	\$0	\$0	\$0	\$0	\$0	\$0	\$0
TOTAL USES	\$0	\$0	(\$2,000)	\$0	\$0	\$0	\$0	\$0	\$0	\$0	\$0	\$0	(\$2,000)
TRANSFERS	\$0	\$0	\$0	\$0	\$0	\$0	\$0	\$0	\$0	\$0	\$0	\$0	\$0
ENDING BALANCE	\$0	\$0	\$45,442	\$637,750	\$0	\$0	\$0	\$0	\$789,924	\$0	\$3,347	\$173,387	\$1,649,850

Reserve Requirement: \$637,750

COMMUNITY FACILITIES DISTRICT NO. 88-1 OF THE CAPISTRANO UNIFIED SCHOOL DISTRICT
SERIES 1996 BONDS
November 2011

	CONSTRUCTION ACCOUNT - 1996 BONDS	CONSTRUCTION ACCOUNT - PRIOR BONDS	ADMINISTRATIVE EXPENSE FUND	BOND RESERVE FUND	COST OF ISSUANCE	INTEREST ACCOUNT	PRINCIPAL ACCOUNT	SINKING REDEMPTION ACCOUNT	SPECIAL RESERVE FUND	OPTIONAL REDEMPTION ACCOUNT	REBATE FUND	SPECIAL TAX FUND	TOTAL
BEGINNING BALANCE	\$0	\$0	\$45,442	\$637,750	\$0	\$0	\$0	\$0	\$789,924	\$0	\$3,347	\$173,387	\$1,649,850
SOURCES OF FUNDS													
SPECIAL TAX RECEIPTS	\$0	\$0	\$0	\$0	\$0	\$0	\$0	\$0	\$0	\$0	\$0	\$0	\$0
INVESTMENT AGREEMENT EARNINGS	\$0	\$0	\$0	\$0	\$0	\$0	\$0	\$0	\$0	\$0	\$0	\$0	\$0
OTHER INVESTMENT EARNINGS	\$0	\$0	\$0	\$0	\$0	\$0	\$0	\$0	\$0	\$0	\$0	\$0	\$0
ACCRUED INTEREST	\$0	\$0	\$0	\$0	\$0	\$0	\$0	\$0	\$0	\$0	\$0	\$0	\$0
<u>MISCELLANEOUS</u>	\$0	\$0	\$0	\$0	\$0	\$0	\$0	\$0	\$0	\$0	\$0	\$0	\$0
TOTAL SOURCES	\$0	\$0	\$0	\$0	\$0	\$0	\$0	\$0	\$0	\$0	\$0	\$0	\$0
USES OF FUNDS													
INTEREST PAYMENTS	\$0	\$0	\$0	\$0	\$0	\$0	\$0	\$0	\$0	\$0	\$0	\$0	\$0
PRINCIPAL PAYMENTS	\$0	\$0	\$0	\$0	\$0	\$0	\$0	\$0	\$0	\$0	\$0	\$0	\$0
PUBLIC FACILITIES	\$0	\$0	\$0	\$0	\$0	\$0	\$0	\$0	\$0	\$0	\$0	\$0	\$0
PROFESSIONAL SERVICES	\$0	\$0	\$0	\$0	\$0	\$0	\$0	\$0	\$0	\$0	\$0	\$0	\$0
ACCRUED INTEREST	\$0	\$0	\$0	\$0	\$0	\$0	\$0	\$0	\$0	\$0	\$0	\$0	\$0
<u>MISCELLANEOUS</u>	\$0	\$0	\$0	\$0	\$0	\$0	\$0	\$0	\$0	\$0	\$0	\$0	\$0
TOTAL USES	\$0	\$0	\$0	\$0	\$0	\$0	\$0	\$0	\$0	\$0	\$0	\$0	\$0
TRANSFERS	\$0	\$0	\$95,000	\$0	\$0	\$0	\$0	\$0	\$78,387	\$0	\$0	(\$173,387)	\$0
ENDING BALANCE	\$0	\$0	\$140,442	\$637,750	\$0	\$0	\$0	\$0	\$868,311	\$0	\$3,347	\$0	\$1,649,850

Reserve Requirement: \$637,750

COMMUNITY FACILITIES DISTRICT NO. 88-1 OF THE CAPISTRANO UNIFIED SCHOOL DISTRICT
SERIES 1996 BONDS
December 2011

	CONSTRUCTION ACCOUNT - 1996 BONDS	CONSTRUCTION ACCOUNT - PRIOR BONDS	ADMINISTRATIVE EXPENSE FUND	BOND RESERVE FUND	COST OF ISSUANCE	INTEREST ACCOUNT	PRINCIPAL ACCOUNT	SINKING REDEMPTION ACCOUNT	SPECIAL RESERVE FUND	OPTIONAL REDEMPTION ACCOUNT	REBATE FUND	SPECIAL TAX FUND	TOTAL
BEGINNING BALANCE	\$0	\$0	\$140,442	\$637,750	\$0	\$0	\$0	\$0	\$868,311	\$0	\$3,347	\$0	\$1,649,850
SOURCES OF FUNDS													
SPECIAL TAX RECEIPTS	\$0	\$0	\$0	\$0	\$0	\$0	\$0	\$0	\$0	\$0	\$0	\$296,219	\$296,219
INVESTMENT AGREEMENT EARNINGS	\$0	\$0	\$0	\$0	\$0	\$0	\$0	\$0	\$0	\$0	\$0	\$0	\$0
OTHER INVESTMENT EARNINGS	\$0	\$0	\$0	\$0	\$0	\$0	\$0	\$0	\$0	\$0	\$0	\$0	\$0
ACCRUED INTEREST	\$0	\$0	\$0	\$0	\$0	\$0	\$0	\$0	\$0	\$0	\$0	\$0	\$0
<u>MISCELLANEOUS</u>	\$0	\$0	\$0	\$0	\$0	\$0	\$0	\$0	\$0	\$0	\$0	\$0	\$0
TOTAL SOURCES	\$0	\$0	\$0	\$0	\$0	\$0	\$0	\$0	\$0	\$0	\$0	\$296,219	\$296,219
USES OF FUNDS													
INTEREST PAYMENTS	\$0	\$0	\$0	\$0	\$0	\$0	\$0	\$0	\$0	\$0	\$0	\$0	\$0
PRINCIPAL PAYMENTS	\$0	\$0	\$0	\$0	\$0	\$0	\$0	\$0	\$0	\$0	\$0	\$0	\$0
PUBLIC FACILITIES	\$0	\$0	\$0	\$0	\$0	\$0	\$0	\$0	\$0	\$0	\$0	\$0	\$0
PROFESSIONAL SERVICES	\$0	\$0	(\$1,342)	\$0	\$0	\$0	\$0	\$0	\$0	\$0	\$0	\$0	(\$1,342)
ACCRUED INTEREST	\$0	\$0	\$0	\$0	\$0	\$0	\$0	\$0	\$0	\$0	\$0	\$0	\$0
<u>MISCELLANEOUS</u>	\$0	\$0	\$0	\$0	\$0	\$0	\$0	\$0	\$0	\$0	\$0	\$0	\$0
TOTAL USES	\$0	\$0	(\$1,342)	\$0	\$0	\$0	\$0	\$0	\$0	\$0	\$0	\$0	(\$1,342)
TRANSFERS	\$0	\$0	\$0	\$0	\$0	\$0	\$0	\$0	\$0	\$0	\$0	\$0	\$0
ENDING BALANCE	\$0	\$0	\$139,100	\$637,750	\$0	\$0	\$0	\$0	\$868,311	\$0	\$3,347	\$296,219	\$1,944,726

Reserve Requirement: \$637,750

COMMUNITY FACILITIES DISTRICT NO. 88-1 OF THE CAPISTRANO UNIFIED SCHOOL DISTRICT
SERIES 1996 BONDS
January 2012

	CONSTRUCTION ACCOUNT - 1996 BONDS	CONSTRUCTION ACCOUNT - PRIOR BONDS	ADMINISTRATIVE EXPENSE FUND	BOND RESERVE FUND	COST OF ISSUANCE	INTEREST ACCOUNT	PRINCIPAL ACCOUNT	SINKING REDEMPTION ACCOUNT	SPECIAL RESERVE FUND	OPTIONAL REDEMPTION ACCOUNT	REBATE FUND	SPECIAL TAX FUND	TOTAL
BEGINNING BALANCE	\$0	\$0	\$139,100	\$637,750	\$0	\$0	\$0	\$0	\$868,311	\$0	\$3,347	\$296,219	\$1,944,726
SOURCES OF FUNDS													
SPECIAL TAX RECEIPTS	\$0	\$0	\$0	\$0	\$0	\$0	\$0	\$0	\$0	\$0	\$0	\$477,898	\$477,898
INVESTMENT AGREEMENT EARNINGS	\$0	\$0	\$0	\$0	\$0	\$0	\$0	\$0	\$0	\$0	\$0	\$0	\$0
OTHER INVESTMENT EARNINGS	\$0	\$0	\$0	\$0	\$0	\$0	\$0	\$0	\$0	\$0	\$0	\$0	\$0
ACCRUED INTEREST	\$0	\$0	\$0	\$0	\$0	\$0	\$0	\$0	\$0	\$0	\$0	\$0	\$0
<u>MISCELLANEOUS</u>	<u>\$0</u>	<u>\$0</u>	<u>\$0</u>	<u>\$0</u>	<u>\$0</u>	<u>\$0</u>	<u>\$0</u>	<u>\$0</u>	<u>\$0</u>	<u>\$0</u>	<u>\$0</u>	<u>\$0</u>	<u>\$0</u>
TOTAL SOURCES	\$0	\$0	\$0	\$0	\$0	\$0	\$0	\$0	\$0	\$0	\$0	\$477,898	\$477,898
USES OF FUNDS													
INTEREST PAYMENTS	\$0	\$0	\$0	\$0	\$0	\$0	\$0	\$0	\$0	\$0	\$0	\$0	\$0
PRINCIPAL PAYMENTS	\$0	\$0	\$0	\$0	\$0	\$0	\$0	\$0	\$0	\$0	\$0	\$0	\$0
PUBLIC FACILITIES	\$0	\$0	\$0	\$0	\$0	\$0	\$0	\$0	\$0	\$0	\$0	\$0	\$0
PROFESSIONAL SERVICES	\$0	\$0	\$0	\$0	\$0	\$0	\$0	\$0	\$0	\$0	\$0	\$0	\$0
ACCRUED INTEREST	\$0	\$0	\$0	\$0	\$0	\$0	\$0	\$0	\$0	\$0	\$0	\$0	\$0
<u>MISCELLANEOUS</u>	<u>\$0</u>	<u>\$0</u>	<u>\$0</u>	<u>\$0</u>	<u>\$0</u>	<u>\$0</u>	<u>\$0</u>	<u>\$0</u>	<u>\$0</u>	<u>\$0</u>	<u>\$0</u>	<u>\$0</u>	<u>\$0</u>
TOTAL USES	\$0	\$0	\$0	\$0	\$0	\$0	\$0	\$0	\$0	\$0	\$0	\$0	\$0
TRANSFERS	\$0	\$0	\$0	\$0	\$0	\$0	\$0	\$0	\$0	\$0	\$0	\$0	\$0
ENDING BALANCE	\$0	\$0	\$139,100	\$637,750	\$0	\$0	\$0	\$0	\$868,311	\$0	\$3,347	\$774,117	\$2,422,624

Reserve Requirement: \$637,750

PRINTED: 08/02/12 14:40

PAGE:13

COMMUNITY FACILITIES DISTRICT NO. 88-1 OF THE CAPISTRANO UNIFIED SCHOOL DISTRICT
SERIES 1996 BONDS
February 2012

	CONSTRUCTION ACCOUNT - 1996 BONDS	CONSTRUCTION ACCOUNT - PRIOR BONDS	ADMINISTRATIVE EXPENSE FUND	BOND RESERVE FUND	COST OF ISSUANCE	INTEREST ACCOUNT	PRINCIPAL ACCOUNT	SINKING REDEMPTION ACCOUNT	SPECIAL RESERVE FUND	OPTIONAL REDEMPTION ACCOUNT	REBATE FUND	SPECIAL TAX FUND	TOTAL
BEGINNING BALANCE	\$0	\$0	\$139,100	\$637,750	\$0	\$0	\$0	\$0	\$868,311	\$0	\$3,347	\$774,117	\$2,422,624
SOURCES OF FUNDS													
SPECIAL TAX RECEIPTS	\$0	\$0	\$0	\$0	\$0	\$0	\$0	\$0	\$0	\$0	\$0	\$0	\$0
INVESTMENT AGREEMENT EARNINGS	\$0	\$0	\$0	\$21,309	\$0	\$0	\$0	\$0	\$0	\$0	\$0	\$0	\$21,309
OTHER INVESTMENT EARNINGS	\$0	\$0	\$0	\$0	\$0	\$0	\$0	\$0	\$0	\$0	\$0	\$0	\$0
ACCRUED INTEREST	\$0	\$0	\$0	\$0	\$0	\$0	\$0	\$0	\$0	\$0	\$0	\$0	\$0
<u>MISCELLANEOUS</u>	\$0	\$0	\$0	\$0	\$0	\$0	\$0	\$0	\$0	\$0	\$0	\$0	\$0
TOTAL SOURCES	\$0	\$0	\$0	\$21,309	\$0	\$0	\$0	\$0	\$0	\$0	\$0	\$0	\$21,309
USES OF FUNDS													
INTEREST PAYMENTS	\$0	\$0	\$0	\$0	\$0	\$0	\$0	\$0	\$0	\$0	\$0	\$0	\$0
PRINCIPAL PAYMENTS	\$0	\$0	\$0	\$0	\$0	\$0	\$0	\$0	\$0	\$0	\$0	\$0	\$0
PUBLIC FACILITIES	\$0	\$0	\$0	\$0	\$0	\$0	\$0	\$0	\$0	\$0	\$0	\$0	\$0
PROFESSIONAL SERVICES	\$0	\$0	\$0	\$0	\$0	\$0	\$0	\$0	\$0	\$0	\$0	\$0	\$0
ACCRUED INTEREST	\$0	\$0	\$0	\$0	\$0	\$0	\$0	\$0	\$0	\$0	\$0	\$0	\$0
<u>MISCELLANEOUS</u>	\$0	\$0	\$0	\$0	\$0	\$0	\$0	\$0	\$0	\$0	\$0	\$0	\$0
TOTAL USES	\$0	\$0	\$0	\$0	\$0	\$0	\$0	\$0	\$0	\$0	\$0	\$0	\$0
TRANSFERS	\$0	\$0	\$0	\$0	\$0	\$0	\$0	\$0	\$0	\$0	\$0	\$0	\$0
ENDING BALANCE	\$0	\$0	\$139,100	\$659,059	\$0	\$0	\$0	\$0	\$868,311	\$0	\$3,347	\$774,117	\$2,443,933

Reserve Requirement: \$637,750

PRINTED: 08/02/12 14:40

PAGE:14

COMMUNITY FACILITIES DISTRICT NO. 88-1 OF THE CAPISTRANO UNIFIED SCHOOL DISTRICT
SERIES 1996 BONDS
March 2012

	CONSTRUCTION ACCOUNT - 1996 BONDS	CONSTRUCTION ACCOUNT - PRIOR BONDS	ADMINISTRATIVE EXPENSE FUND	BOND RESERVE FUND	COST OF ISSUANCE	INTEREST ACCOUNT	PRINCIPAL ACCOUNT	SINKING REDEMPTION ACCOUNT	SPECIAL RESERVE FUND	OPTIONAL REDEMPTION ACCOUNT	REBATE FUND	SPECIAL TAX FUND	TOTAL
BEGINNING BALANCE	\$0	\$0	\$139,100	\$659,059	\$0	\$0	\$0	\$0	\$868,311	\$0	\$3,347	\$774,117	\$2,443,933
SOURCES OF FUNDS													
SPECIAL TAX RECEIPTS	\$0	\$0	\$0	\$0	\$0	\$0	\$0	\$0	\$0	\$0	\$0	\$21,794	\$21,794
INVESTMENT AGREEMENT EARNINGS	\$0	\$0	\$0	\$0	\$0	\$0	\$0	\$0	\$0	\$0	\$0	\$0	\$0
OTHER INVESTMENT EARNINGS	\$0	\$0	\$0	\$0	\$0	\$0	\$0	\$0	\$0	\$0	\$0	\$0	\$0
ACCRUED INTEREST	\$0	\$0	\$0	\$0	\$0	\$0	\$0	\$0	\$0	\$0	\$0	\$0	\$0
<u>MISCELLANEOUS</u>	\$0	\$0	\$0	\$0	\$0	\$0	\$0	\$0	\$0	\$0	\$0	\$0	\$0
TOTAL SOURCES	\$0	\$0	\$0	\$0	\$0	\$0	\$0	\$0	\$0	\$0	\$0	\$21,794	\$21,794
USES OF FUNDS													
INTEREST PAYMENTS	\$0	\$0	\$0	\$0	\$0	(\$120,413)	\$0	\$0	\$0	\$0	\$0	\$0	(\$120,413)
PRINCIPAL PAYMENTS	\$0	\$0	\$0	\$0	\$0	\$0	\$0	\$0	\$0	\$0	\$0	\$0	\$0
PUBLIC FACILITIES	\$0	\$0	\$0	\$0	\$0	\$0	\$0	\$0	\$0	\$0	\$0	\$0	\$0
PROFESSIONAL SERVICES	\$0	\$0	\$0	\$0	\$0	\$0	\$0	\$0	(\$19,852)	\$0	\$0	\$0	(\$19,852)
ACCRUED INTEREST	\$0	\$0	\$0	\$0	\$0	\$0	\$0	\$0	\$0	\$0	\$0	\$0	\$0
<u>MISCELLANEOUS</u>	\$0	\$0	\$0	\$0	\$0	\$0	\$0	\$0	\$0	\$0	\$0	\$0	\$0
TOTAL USES	\$0	\$0	\$0	\$0	\$0	(\$120,413)	\$0	\$0	(\$19,852)	\$0	\$0	\$0	(\$140,264)
TRANSFERS	\$0	\$0	\$0	(\$21,309)	\$0	\$120,413	\$567,500	\$0	\$0	\$0	\$0	(\$666,603)	\$0
ENDING BALANCE	\$0	\$0	\$139,100	\$637,750	\$0	\$0	\$567,500	\$0	\$848,459	\$0	\$3,347	\$129,307	\$2,325,463

Reserve Requirement: \$637,750

PRINTED: 08/02/12 14:40

PAGE:15

COMMUNITY FACILITIES DISTRICT NO. 88-1 OF THE CAPISTRANO UNIFIED SCHOOL DISTRICT
SERIES 1996 BONDS
April 2012

	CONSTRUCTION ACCOUNT - 1996 BONDS	CONSTRUCTION ACCOUNT - PRIOR BONDS	ADMINISTRATIVE EXPENSE FUND	BOND RESERVE FUND	COST OF ISSUANCE	INTEREST ACCOUNT	PRINCIPAL ACCOUNT	SINKING REDEMPTION ACCOUNT	SPECIAL RESERVE FUND	OPTIONAL REDEMPTION ACCOUNT	REBATE FUND	SPECIAL TAX FUND	TOTAL
BEGINNING BALANCE	\$0	\$0	\$139,100	\$637,750	\$0	\$0	\$567,500	\$0	\$848,459	\$0	\$3,347	\$129,307	\$2,325,463
SOURCES OF FUNDS													
SPECIAL TAX RECEIPTS	\$0	\$0	\$0	\$0	\$0	\$0	\$0	\$0	\$0	\$0	\$0	\$0	\$0
INVESTMENT AGREEMENT EARNINGS	\$0	\$0	\$0	\$0	\$0	\$0	\$0	\$0	\$0	\$0	\$0	\$0	\$0
OTHER INVESTMENT EARNINGS	\$0	\$0	\$0	\$0	\$0	\$0	\$0	\$0	\$0	\$0	\$0	\$0	\$0
ACCRUED INTEREST	\$0	\$0	\$0	\$0	\$0	\$0	\$0	\$0	\$0	\$0	\$0	\$0	\$0
<u>MISCELLANEOUS</u>	\$0	\$0	\$0	\$0	\$0	\$0	\$0	\$0	\$0	\$0	\$0	\$0	\$0
TOTAL SOURCES	\$0	\$0	\$0	\$0	\$0	\$0	\$0	\$0	\$0	\$0	\$0	\$0	\$0
USES OF FUNDS													
INTEREST PAYMENTS	\$0	\$0	\$0	\$0	\$0	\$0	\$0	\$0	\$0	\$0	\$0	\$0	\$0
PRINCIPAL PAYMENTS	\$0	\$0	\$0	\$0	\$0	\$0	\$0	\$0	\$0	\$0	\$0	\$0	\$0
PUBLIC FACILITIES	\$0	\$0	\$0	\$0	\$0	\$0	\$0	\$0	\$0	\$0	\$0	\$0	\$0
PROFESSIONAL SERVICES	\$0	\$0	\$0	\$0	\$0	\$0	\$0	\$0	\$0	\$0	\$0	\$0	\$0
ACCRUED INTEREST	\$0	\$0	\$0	\$0	\$0	\$0	\$0	\$0	\$0	\$0	\$0	\$0	\$0
<u>MISCELLANEOUS</u>	\$0	\$0	\$0	\$0	\$0	\$0	\$0	\$0	\$0	\$0	\$0	\$0	\$0
TOTAL USES	\$0	\$0	\$0	\$0	\$0	\$0	\$0	\$0	\$0	\$0	\$0	\$0	\$0
TRANSFERS	\$0	\$0	\$0	\$0	\$0	\$0	\$0	\$0	\$0	\$0	\$0	\$0	\$0
ENDING BALANCE	\$0	\$0	\$139,100	\$637,750	\$0	\$0	\$567,500	\$0	\$848,459	\$0	\$3,347	\$129,307	\$2,325,463

Reserve Requirement: \$637,750

PRINTED: 08/02/12 14:40

PAGE:16

COMMUNITY FACILITIES DISTRICT NO. 88-1 OF THE CAPISTRANO UNIFIED SCHOOL DISTRICT
SERIES 1996 BONDS
May 2012

	CONSTRUCTION ACCOUNT - 1996 BONDS	CONSTRUCTION ACCOUNT - PRIOR BONDS	ADMINISTRATIVE EXPENSE FUND	BOND RESERVE FUND	COST OF ISSUANCE	INTEREST ACCOUNT	PRINCIPAL ACCOUNT	SINKING REDEMPTION ACCOUNT	SPECIAL RESERVE FUND	OPTIONAL REDEMPTION ACCOUNT	REBATE FUND	SPECIAL TAX FUND	TOTAL
BEGINNING BALANCE	\$0	\$0	\$139,100	\$637,750	\$0	\$0	\$567,500	\$0	\$848,459	\$0	\$3,347	\$129,307	\$2,325,463
SOURCES OF FUNDS													
SPECIAL TAX RECEIPTS	\$0	\$0	\$0	\$0	\$0	\$0	\$0	\$0	\$0	\$0	\$0	\$685,531	\$685,531
INVESTMENT AGREEMENT EARNINGS	\$0	\$0	\$0	\$0	\$0	\$0	\$0	\$0	\$0	\$0	\$0	\$0	\$0
OTHER INVESTMENT EARNINGS	\$0	\$0	\$2	\$0	\$0	\$0	\$7	\$0	\$11	\$0	\$0	\$2	\$21
ACCRUED INTEREST	\$0	\$0	\$0	\$0	\$0	\$0	\$0	\$0	\$0	\$0	\$0	\$0	\$0
<u>MISCELLANEOUS</u>	<u>\$0</u>	<u>\$0</u>	<u>\$0</u>	<u>\$0</u>	<u>\$0</u>	<u>\$0</u>	<u>\$0</u>	<u>\$0</u>	<u>\$0</u>	<u>\$0</u>	<u>\$0</u>	<u>\$0</u>	<u>\$0</u>
TOTAL SOURCES	\$0	\$0	\$2	\$0	\$0	\$0	\$7	\$0	\$11	\$0	\$0	\$685,533	\$685,552
USES OF FUNDS													
INTEREST PAYMENTS	\$0	\$0	\$0	\$0	\$0	\$0	\$0	\$0	\$0	\$0	\$0	\$0	\$0
PRINCIPAL PAYMENTS	\$0	\$0	\$0	\$0	\$0	\$0	\$0	\$0	\$0	\$0	\$0	\$0	\$0
PUBLIC FACILITIES	\$0	\$0	\$0	\$0	\$0	\$0	\$0	\$0	\$0	\$0	\$0	\$0	\$0
PROFESSIONAL SERVICES	\$0	\$0	\$0	\$0	\$0	\$0	\$0	\$0	\$0	\$0	\$0	\$0	\$0
ACCRUED INTEREST	\$0	\$0	\$0	\$0	\$0	\$0	\$0	\$0	\$0	\$0	\$0	\$0	\$0
<u>MISCELLANEOUS</u>	<u>\$0</u>	<u>\$0</u>	<u>\$0</u>	<u>\$0</u>	<u>\$0</u>	<u>\$0</u>	<u>\$0</u>	<u>\$0</u>	<u>\$0</u>	<u>\$0</u>	<u>\$0</u>	<u>\$0</u>	<u>\$0</u>
TOTAL USES	\$0	\$0	\$0	\$0	\$0	\$0	\$0	\$0	\$0	\$0	\$0	\$0	\$0
TRANSFERS	\$0	\$0	\$0	\$0	\$0	\$0	\$0	\$0	\$0	\$0	\$0	\$0	\$0
ENDING BALANCE	\$0	\$0	\$139,101	\$637,750	\$0	\$0	\$567,507	\$0	\$848,470	\$0	\$3,347	\$814,840	\$3,011,015

Reserve Requirement: \$637,750

PRINTED: 08/02/12 14:40

PAGE:17

COMMUNITY FACILITIES DISTRICT NO. 88-1 OF THE CAPISTRANO UNIFIED SCHOOL DISTRICT
SERIES 1996 BONDS
June 2012

	CONSTRUCTION ACCOUNT - 1996 BONDS	CONSTRUCTION ACCOUNT - PRIOR BONDS	ADMINISTRATIVE EXPENSE FUND	BOND RESERVE FUND	COST OF ISSUANCE	INTEREST ACCOUNT	PRINCIPAL ACCOUNT	SINKING REDEMPTION ACCOUNT	SPECIAL RESERVE FUND	OPTIONAL REDEMPTION ACCOUNT	REBATE FUND	SPECIAL TAX FUND	TOTAL
BEGINNING BALANCE	\$0	\$0	\$139,101	\$637,750	\$0	\$0	\$567,507	\$0	\$848,470	\$0	\$3,347	\$814,840	\$3,011,015
SOURCES OF FUNDS													
SPECIAL TAX RECEIPTS	\$0	\$0	\$0	\$0	\$0	\$0	\$0	\$0	\$0	\$0	\$0	\$0	\$0
INVESTMENT AGREEMENT EARNINGS	\$0	\$0	\$0	\$0	\$0	\$0	\$0	\$0	\$0	\$0	\$0	\$0	\$0
OTHER INVESTMENT EARNINGS	\$0	\$0	\$2	\$0	\$0	\$0	\$8	\$0	\$12	\$0	\$0	\$8	\$30
ACCRUED INTEREST	\$0	\$0	\$0	\$0	\$0	\$0	\$0	\$0	\$0	\$0	\$0	\$0	\$0
<u>MISCELLANEOUS</u>	<u>\$0</u>	<u>\$0</u>	<u>\$0</u>	<u>\$0</u>	<u>\$0</u>	<u>\$0</u>	<u>\$0</u>	<u>\$0</u>	<u>\$0</u>	<u>\$0</u>	<u>\$0</u>	<u>\$0</u>	<u>\$0</u>
TOTAL SOURCES	\$0	\$0	\$2	\$0	\$0	\$0	\$8	\$0	\$12	\$0	\$0	\$8	\$30
USES OF FUNDS													
INTEREST PAYMENTS	\$0	\$0	\$0	\$0	\$0	\$0	\$0	\$0	\$0	\$0	\$0	\$0	\$0
PRINCIPAL PAYMENTS	\$0	\$0	\$0	\$0	\$0	\$0	\$0	\$0	\$0	\$0	\$0	\$0	\$0
PUBLIC FACILITIES	\$0	\$0	\$0	\$0	\$0	\$0	\$0	\$0	\$0	\$0	\$0	\$0	\$0
PROFESSIONAL SERVICES	\$0	\$0	\$0	\$0	\$0	\$0	\$0	\$0	(\$2,000)	\$0	\$0	\$0	(\$2,000)
ACCRUED INTEREST	\$0	\$0	\$0	\$0	\$0	\$0	\$0	\$0	\$0	\$0	\$0	\$0	\$0
<u>MISCELLANEOUS</u>	<u>\$0</u>	<u>\$0</u>	<u>\$0</u>	<u>\$0</u>	<u>\$0</u>	<u>\$0</u>	<u>\$0</u>	<u>\$0</u>	<u>\$0</u>	<u>\$0</u>	<u>\$0</u>	<u>\$0</u>	<u>\$0</u>
TOTAL USES	\$0	\$0	\$0	\$0	\$0	\$0	\$0	\$0	(\$2,000)	\$0	\$0	\$0	(\$2,000)
TRANSFERS	\$0	\$0	\$0	\$0	\$0	\$0	\$0	\$0	\$0	\$0	\$0	\$0	\$0
ENDING BALANCE	\$0	\$0	\$139,103	\$637,750	\$0	\$0	\$567,515	\$0	\$846,481	\$0	\$3,347	\$814,848	\$3,009,045

Reserve Requirement: \$637,750

PRINTED: 08/02/12 14:40

PAGE:18

EXHIBIT C

***CFD No. 88-1 of the
Capistrano Unified School District***

***Special Tax Roll
Fiscal Year 2012-2013***

Exhibit C**CFD No. 88-1 of the Capistrano Unified School District**

<u>Assessor's Parcel Number</u>	<u>FY 2012-2013 Special Tax</u>
805-121-03	\$638.48
805-121-04	\$601.01
805-121-05	\$601.01
805-121-06	\$601.01
805-121-07	\$638.48
805-122-01	\$638.48
805-122-03	\$601.01
805-122-04	\$638.48
805-122-05	\$601.01
805-123-04	\$601.01
805-123-05	\$638.48
805-123-06	\$601.01
805-123-07	\$638.48
805-123-08	\$601.01
805-123-09	\$820.08
805-123-10	\$601.01
805-131-01	\$601.01
805-131-02	\$638.48
805-131-03	\$601.01
805-131-04	\$638.48
805-131-05	\$601.01
805-131-06	\$601.01
805-131-07	\$601.01
805-131-08	\$638.48
805-131-09	\$601.01
805-131-10	\$601.01
805-132-01	\$638.48
805-132-02	\$601.01
805-132-03	\$638.48
805-132-04	\$601.01
805-132-05	\$601.01
805-132-06	\$638.48
805-132-07	\$601.01
805-132-08	\$638.48
805-132-09	\$601.01
805-132-10	\$638.48
805-132-12	\$638.48
805-132-13	\$601.01
805-132-14	\$601.01
805-132-15	\$601.01
805-132-16	\$638.48
805-132-18	\$638.48
805-132-19	\$638.48
805-132-20	\$601.01
805-132-21	\$601.01
805-133-02	\$601.01
805-133-03	\$638.48
805-133-04	\$601.01

Exhibit C**CFD No. 88-1 of the Capistrano Unified School District**

<u>Assessor's Parcel Number</u>	<u>FY 2012-2013 Special Tax</u>
805-133-05	\$601.01
805-133-06	\$638.48
805-133-07	\$601.01
805-133-08	\$601.01
805-133-09	\$601.01
805-133-10	\$638.48
805-133-11	\$601.01
805-133-12	\$638.48
805-133-13	\$601.01
805-133-14	\$638.48
805-141-01	\$638.48
805-141-02	\$601.01
805-141-03	\$638.48
805-141-04	\$638.48
805-141-05	\$601.01
805-141-06	\$820.08
805-141-08	\$601.01
805-141-09	\$601.01
805-141-10	\$638.48
805-141-11	\$601.01
805-141-12	\$601.01
805-141-13	\$638.48
805-141-14	\$601.01
805-141-15	\$601.01
805-141-16	\$638.48
805-141-17	\$638.48
805-141-18	\$638.48
805-141-19	\$601.01
805-141-20	\$638.48
805-141-21	\$601.01
805-141-22	\$638.48
805-141-23	\$601.01
805-141-25	\$638.48
805-141-26	\$638.48
805-141-27	\$638.48
805-141-28	\$601.01
805-141-29	\$638.48
805-141-30	\$638.48
805-141-31	\$638.48
805-141-32	\$638.48
805-141-33	\$601.01
805-141-34	\$601.01
805-141-35	\$601.01
805-141-36	\$638.48
805-141-37	\$601.01
805-141-38	\$601.01
805-141-39	\$638.48
805-141-40	\$638.48

Exhibit C**CFD No. 88-1 of the Capistrano Unified School District**

<u>Assessor's Parcel Number</u>	<u>FY 2012-2013 Special Tax</u>
805-141-41	\$601.01
805-141-42	\$638.48
805-141-43	\$601.01
805-141-44	\$820.08
805-141-45	\$638.48
805-141-46	\$601.01
805-141-47	\$638.48
805-141-48	\$601.01
805-141-49	\$601.01
805-141-50	\$601.01
805-141-51	\$638.48
805-141-52	\$601.01
805-141-53	\$638.48
805-141-54	\$601.01
805-141-55	\$638.48
805-141-56	\$601.01
805-141-57	\$638.48
805-141-58	\$601.01
805-141-60	\$638.48
805-141-61	\$601.01
805-141-62	\$601.01
805-142-01	\$601.01
805-142-02	\$601.01
805-142-03	\$638.48
805-142-04	\$638.48
805-142-05	\$638.48
805-142-06	\$601.01
805-142-07	\$638.48
805-142-08	\$601.01
805-142-09	\$601.01
805-142-10	\$638.48
805-142-11	\$638.48
805-142-12	\$820.08
805-142-13	\$638.48
805-142-14	\$638.48
805-142-15	\$638.48
805-142-16	\$638.48
805-142-17	\$638.48
805-142-18	\$638.48
805-142-19	\$638.48
805-142-20	\$638.48
805-142-21	\$820.08
805-142-22	\$638.48
805-142-23	\$638.48
805-142-24	\$638.48
805-142-25	\$638.48
805-142-26	\$638.48
805-142-27	\$601.01

Exhibit C**CFD No. 88-1 of the Capistrano Unified School District**

<u>Assessor's Parcel Number</u>	<u>FY 2012-2013 Special Tax</u>
805-142-28	\$601.01
805-142-29	\$638.48
805-142-30	\$601.01
805-142-31	\$638.48
805-142-32	\$601.01
805-142-33	\$601.01
805-142-34	\$638.48
805-142-35	\$601.01
805-142-36	\$638.48
805-151-02	\$638.48
805-151-03	\$638.48
805-151-04	\$638.48
805-151-05	\$638.48
805-151-06	\$638.48
805-151-07	\$638.48
805-151-08	\$638.48
805-151-09	\$638.48
805-151-10	\$638.48
805-151-11	\$638.48
805-151-12	\$638.48
805-152-01	\$638.48
805-152-02	\$638.48
805-152-03	\$638.48
805-152-04	\$638.48
805-152-05	\$638.48
805-152-06	\$638.48
805-152-07	\$638.48
805-152-08	\$638.48
805-152-09	\$638.48
805-152-10	\$638.48
805-152-11	\$638.48
805-152-12	\$638.48
805-152-13	\$638.48
805-152-14	\$638.48
805-152-15	\$638.48
805-152-16	\$638.48
805-152-17	\$638.48
805-152-18	\$638.48
805-152-19	\$638.48
805-152-20	\$638.48
805-152-21	\$638.48
805-152-22	\$638.48
805-152-23	\$638.48
805-152-24	\$638.48
805-152-25	\$638.48
805-152-26	\$638.48
805-152-27	\$638.48
805-152-28	\$638.48

Exhibit C**CFD No. 88-1 of the Capistrano Unified School District**

<u>Assessor's Parcel Number</u>	<u>FY 2012-2013 Special Tax</u>
805-152-29	\$638.48
805-152-30	\$638.48
805-152-31	\$638.48
805-152-32	\$638.48
805-152-33	\$638.48
805-152-34	\$638.48
805-152-35	\$638.48
805-152-36	\$638.48
805-152-37	\$638.48
805-161-02	\$638.48
805-161-03	\$638.48
805-161-04	\$638.48
805-161-05	\$638.48
805-161-06	\$638.48
805-161-07	\$638.48
805-161-08	\$638.48
805-161-09	\$638.48
805-161-10	\$638.48
805-161-11	\$638.48
805-161-12	\$638.48
805-161-13	\$638.48
805-161-14	\$638.48
805-161-15	\$638.48
805-161-16	\$638.48
805-161-17	\$638.48
805-161-18	\$638.48
805-161-19	\$638.48
805-161-20	\$638.48
805-161-21	\$638.48
805-161-22	\$638.48
805-161-23	\$638.48
805-161-24	\$638.48
805-161-25	\$820.08
805-161-26	\$638.48
805-161-29	\$638.48
805-161-30	\$638.48
805-161-31	\$638.48
805-161-32	\$638.48
805-161-33	\$638.48
805-161-34	\$638.48
805-161-35	\$638.48
805-161-36	\$638.48
805-161-37	\$638.48
805-161-38	\$638.48
805-171-01	\$820.08
805-171-02	\$638.48
805-171-03	\$638.48
805-171-04	\$638.48

Exhibit C**CFD No. 88-1 of the Capistrano Unified School District**

<u>Assessor's Parcel Number</u>	<u>FY 2012-2013 Special Tax</u>
805-171-05	\$638.48
805-171-06	\$638.48
805-171-07	\$638.48
805-171-08	\$638.48
805-171-09	\$638.48
805-171-10	\$638.48
805-171-11	\$638.48
805-171-12	\$638.48
805-171-13	\$820.08
805-172-01	\$638.48
805-172-02	\$638.48
805-172-03	\$638.48
805-172-04	\$638.48
805-172-05	\$638.48
805-172-06	\$638.48
805-172-07	\$820.08
805-172-08	\$638.48
805-172-09	\$638.48
805-173-02	\$638.48
805-173-03	\$638.48
805-173-04	\$638.48
805-173-05	\$638.48
805-173-06	\$638.48
805-181-05	\$638.48
805-181-06	\$638.48
805-181-07	\$638.48
805-181-08	\$638.48
805-181-09	\$638.48
805-181-10	\$638.48
805-181-11	\$638.48
805-181-12	\$638.48
805-181-13	\$638.48
805-181-14	\$638.48
805-181-15	\$638.48
805-181-16	\$638.48
805-181-17	\$638.48
805-181-18	\$638.48
805-181-19	\$638.48
805-181-20	\$638.48
805-181-21	\$638.48
805-181-22	\$638.48
805-181-23	\$638.48
805-182-02	\$638.48
805-182-03	\$638.48
805-182-04	\$601.01
805-182-05	\$638.48
805-182-06	\$601.01
805-182-07	\$601.01

Exhibit C**CFD No. 88-1 of the Capistrano Unified School District**

<u>Assessor's Parcel Number</u>	<u>FY 2012-2013 Special Tax</u>
805-182-08	\$638.48
805-182-09	\$601.01
805-182-10	\$601.01
805-182-11	\$638.48
805-182-12	\$601.01
805-182-13	\$638.48
805-182-14	\$638.48
805-182-15	\$601.01
805-182-16	\$638.48
805-182-17	\$601.01
805-182-18	\$638.48
805-182-19	\$601.01
805-182-20	\$638.48
805-182-21	\$601.01
805-182-22	\$638.48
805-182-23	\$601.01
805-182-24	\$638.48
805-182-25	\$601.01
805-182-26	\$601.01
805-182-27	\$601.01
805-182-28	\$638.48
805-182-29	\$601.01
805-182-30	\$638.48
805-182-31	\$601.01
805-182-32	\$601.01
805-182-33	\$638.48
805-182-34	\$601.01
805-182-35	\$601.01
805-182-36	\$638.48
805-182-38	\$638.48
805-182-39	\$601.01
805-182-40	\$638.48
805-182-41	\$601.01
805-182-42	\$601.01
805-182-44	\$601.01
805-191-01	\$638.48
805-191-02	\$638.48
805-191-03	\$638.48
805-191-05	\$638.48
805-191-07	\$638.48
805-191-08	\$638.48
805-191-09	\$638.48
805-191-10	\$638.48
805-191-11	\$638.48
805-191-13	\$638.48
805-191-14	\$638.48
805-191-15	\$638.48
805-191-16	\$638.48

Exhibit C**CFD No. 88-1 of the Capistrano Unified School District**

<u>Assessor's Parcel Number</u>	<u>FY 2012-2013 Special Tax</u>
805-191-17	\$638.48
805-191-18	\$638.48
805-191-19	\$638.48
805-191-20	\$638.48
805-191-21	\$638.48
805-191-22	\$638.48
805-191-23	\$638.48
805-191-24	\$638.48
805-191-25	\$638.48
805-191-26	\$638.48
805-201-01	\$638.48
805-201-02	\$638.48
805-201-03	\$638.48
805-201-04	\$638.48
805-201-05	\$820.08
805-201-06	\$638.48
805-201-07	\$638.48
805-201-08	\$638.48
805-201-09	\$638.48
805-201-10	\$638.48
805-201-11	\$638.48
805-201-12	\$638.48
805-201-14	\$638.48
805-201-15	\$638.48
805-201-16	\$638.48
805-201-17	\$638.48
805-201-18	\$638.48
805-201-19	\$638.48
805-201-20	\$638.48
805-201-21	\$638.48
805-201-22	\$638.48
805-201-23	\$638.48
805-201-24	\$638.48
805-201-25	\$638.48
805-201-26	\$638.48
805-201-27	\$638.48
805-201-28	\$638.48
805-201-30	\$638.48
805-201-31	\$638.48
805-201-32	\$638.48
805-201-33	\$638.48
805-201-34	\$638.48
805-201-35	\$638.48
805-201-36	\$638.48
805-201-37	\$638.48
805-201-38	\$638.48
805-201-39	\$638.48
805-201-40	\$638.48

Exhibit C**CFD No. 88-1 of the Capistrano Unified School District**

<u>Assessor's Parcel Number</u>	<u>FY 2012-2013 Special Tax</u>
805-201-41	\$638.48
805-201-42	\$638.48
805-201-43	\$638.48
805-201-44	\$638.48
805-201-45	\$638.48
805-201-46	\$638.48
805-201-47	\$638.48
805-201-48	\$638.48
805-261-05	\$26,138.91
805-262-01	\$650.76
805-262-02	\$650.76
805-262-03	\$835.86
805-262-04	\$650.76
805-262-05	\$650.76
805-262-06	\$650.76
805-262-07	\$650.76
805-262-08	\$650.76
805-262-09	\$650.76
805-262-10	\$650.76
805-262-11	\$650.76
805-262-12	\$650.76
805-262-13	\$650.76
805-262-14	\$835.86
805-262-15	\$650.76
805-262-16	\$650.76
805-262-17	\$650.76
805-262-18	\$650.76
805-262-19	\$650.76
805-262-20	\$835.86
805-262-21	\$650.76
805-262-22	\$650.76
805-262-23	\$650.76
805-262-24	\$835.86
805-262-25	\$650.76
805-262-26	\$650.76
805-262-27	\$650.76
805-262-28	\$650.76
805-262-29	\$650.76
805-262-30	\$650.76
805-262-31	\$650.76
805-262-32	\$650.76
805-262-33	\$650.76
805-262-34	\$650.76
805-262-35	\$650.76
805-262-36	\$650.76
805-262-37	\$650.76
805-262-38	\$650.76
805-262-39	\$650.76

Exhibit C**CFD No. 88-1 of the Capistrano Unified School District**

<u>Assessor's Parcel Number</u>	<u>FY 2012-2013 Special Tax</u>
805-262-40	\$650.76
805-262-41	\$650.76
805-262-42	\$650.76
805-262-43	\$650.76
805-262-44	\$650.76
805-262-45	\$650.76
805-262-46	\$650.76
805-262-47	\$650.76
805-262-48	\$835.86
805-262-49	\$835.86
805-262-50	\$650.76
805-262-51	\$835.86
805-262-52	\$650.76
805-262-53	\$650.76
805-262-54	\$650.76
805-262-55	\$650.76
805-262-56	\$835.86
805-262-57	\$650.76
805-262-58	\$835.86
805-262-59	\$650.76
805-262-60	\$650.76
805-262-61	\$650.76
805-262-62	\$650.76
805-262-63	\$650.76
805-262-64	\$650.76
805-271-09	\$689.03
805-271-10	\$689.03
805-271-11	\$648.59
805-271-12	\$648.59
805-271-13	\$689.03
805-271-14	\$689.03
805-271-15	\$702.28
805-271-16	\$702.28
805-271-17	\$661.07
805-271-18	\$661.07
805-271-19	\$702.28
805-271-20	\$702.28
805-271-21	\$702.28
805-271-22	\$702.28
805-271-23	\$702.28
805-271-24	\$702.28
805-271-25	\$689.03
805-271-26	\$689.03
805-271-27	\$689.03
805-271-28	\$689.03
805-271-29	\$689.03
805-271-30	\$689.03
805-271-31	\$661.07

Exhibit C**CFD No. 88-1 of the Capistrano Unified School District**

<u>Assessor's Parcel Number</u>	<u>FY 2012-2013 Special Tax</u>
805-271-32	\$661.07
805-271-33	\$673.78
805-271-34	\$673.78
805-271-35	\$648.59
805-291-01	\$663.27
805-291-02	\$663.27
805-291-03	\$663.27
805-291-04	\$663.27
805-291-05	\$663.27
805-291-06	\$663.27
805-291-07	\$663.27
805-291-08	\$663.27
805-291-09	\$663.27
805-291-10	\$663.27
805-291-11	\$663.27
805-291-12	\$663.27
805-291-13	\$663.27
805-291-14	\$663.27
805-291-15	\$663.27
805-291-16	\$663.27
805-291-17	\$663.27
805-291-18	\$663.27
805-291-19	\$663.27
805-291-20	\$663.27
805-291-21	\$663.27
805-291-22	\$663.27
805-291-23	\$663.27
805-291-24	\$663.27
805-291-25	\$663.27
805-291-26	\$650.76
805-291-27	\$650.76
805-291-28	\$650.76
805-291-29	\$835.86
805-291-30	\$650.76
805-291-31	\$650.76
805-291-32	\$650.76
805-291-33	\$650.76
805-291-34	\$650.76
805-291-35	\$650.76
805-291-36	\$835.86
805-291-37	\$650.76
805-291-38	\$650.76
805-291-39	\$650.76
805-291-40	\$650.76
805-291-41	\$650.76
805-291-42	\$650.76
805-291-43	\$650.76
805-291-44	\$650.76

Exhibit C**CFD No. 88-1 of the Capistrano Unified School District**

<u>Assessor's Parcel Number</u>	<u>FY 2012-2013 Special Tax</u>
805-291-45	\$650.76
805-291-46	\$650.76
805-292-01	\$663.27
805-292-02	\$663.27
805-292-03	\$663.27
805-292-04	\$663.27
805-292-05	\$663.27
805-292-06	\$663.27
805-292-07	\$663.27
805-292-08	\$663.27
805-292-09	\$851.93
805-292-10	\$663.27
805-292-11	\$663.27
805-292-12	\$663.27
805-292-13	\$663.27
805-292-14	\$663.27
805-292-15	\$663.27
805-292-16	\$663.27
805-292-17	\$663.27
805-292-18	\$663.27
805-292-19	\$663.27
805-292-20	\$650.76
805-292-21	\$650.76
805-292-22	\$650.76
805-292-23	\$650.76
805-292-24	\$650.76
805-292-25	\$835.86
805-292-26	\$650.76
805-292-27	\$650.76
805-292-28	\$650.76
805-292-29	\$650.76
805-292-30	\$650.76
805-292-31	\$650.76
805-292-32	\$650.76
805-292-33	\$650.76
805-292-34	\$650.76
805-292-35	\$650.76
805-292-36	\$835.86
805-292-37	\$650.76
805-301-01	\$650.76
805-301-02	\$650.76
805-301-03	\$650.76
805-301-04	\$650.76
805-301-05	\$650.76
805-301-06	\$650.76
805-301-07	\$650.76
805-301-08	\$650.76
805-301-09	\$650.76

Exhibit C**CFD No. 88-1 of the Capistrano Unified School District**

<u>Assessor's Parcel Number</u>	<u>FY 2012-2013 Special Tax</u>
805-301-10	\$650.76
805-301-11	\$650.76
805-301-12	\$650.76
805-301-13	\$650.76
805-301-14	\$650.76
805-301-15	\$650.76
805-301-16	\$650.76
805-301-17	\$650.76
805-301-18	\$835.86
805-301-19	\$650.76
805-301-20	\$650.76
805-301-21	\$650.76
805-301-22	\$650.76
805-301-23	\$689.03
805-301-24	\$689.03
805-301-25	\$689.03
805-301-26	\$689.03
805-311-01	\$885.01
805-311-02	\$885.01
805-311-03	\$885.01
805-311-04	\$885.01
805-311-05	\$885.01
805-311-06	\$885.01
805-311-08	\$868.31
805-311-09	\$676.03
805-311-10	\$868.31
805-311-11	\$868.31
805-311-12	\$868.31
805-311-13	\$868.31
805-312-01	\$676.03
805-312-02	\$868.31
805-312-03	\$868.31
805-312-04	\$868.31
805-312-05	\$868.31
805-312-06	\$835.86
805-312-07	\$835.86
805-312-08	\$835.86
805-312-09	\$835.86
805-313-01	\$835.86
805-313-02	\$835.86
805-313-03	\$835.86
805-313-04	\$835.86
805-313-05	\$835.86
805-313-06	\$835.86
805-313-07	\$835.86
805-313-08	\$835.86
805-313-09	\$835.86
805-313-10	\$835.86

Exhibit C**CFD No. 88-1 of the Capistrano Unified School District**

<u>Assessor's Parcel Number</u>	<u>FY 2012-2013 Special Tax</u>
805-313-11	\$835.86
805-313-12	\$835.86
805-313-14	\$835.86
805-313-15	\$835.86
805-313-16	\$835.86
805-313-17	\$835.86
805-313-18	\$835.86
805-313-19	\$835.86
805-313-20	\$835.86
805-313-21	\$835.86
805-313-28	\$835.86
805-313-29	\$835.86
805-313-30	\$835.86
805-313-31	\$835.86
805-313-32	\$835.86
805-313-33	\$835.86
805-313-34	\$835.86
805-313-35	\$835.86
805-313-36	\$835.86
805-313-37	\$835.86
805-313-38	\$835.86
805-313-39	\$835.86
805-313-40	\$835.86
805-313-41	\$835.86
805-313-42	\$835.86
805-313-44	\$902.03
805-313-45	\$851.93
805-313-46	\$851.93
805-313-47	\$835.86
805-313-48	\$835.86
805-313-49	\$835.86
805-313-50	\$835.86
805-313-51	\$835.86
805-313-53	\$835.86
805-313-54	\$835.86
805-313-55	\$835.86
805-313-56	\$835.86
805-313-57	\$835.86
805-321-01	\$851.93
805-321-02	\$851.93
805-321-03	\$851.93
805-321-04	\$851.93
805-321-05	\$851.93
805-321-06	\$851.93
805-321-07	\$851.93
805-321-08	\$851.93
805-321-09	\$851.93
805-321-10	\$851.93

Exhibit C**CFD No. 88-1 of the Capistrano Unified School District**

<u>Assessor's Parcel Number</u>	<u>FY 2012-2013 Special Tax</u>
805-321-11	\$851.93
805-321-12	\$851.93
805-321-13	\$851.93
805-321-14	\$851.93
805-321-15	\$851.93
805-321-16	\$851.93
805-321-17	\$851.93
805-321-18	\$851.93
805-321-22	\$868.31
805-321-23	\$868.31
805-321-24	\$868.31
805-321-25	\$676.03
805-321-26	\$868.31
805-321-27	\$868.31
805-321-28	\$868.31
805-321-29	\$676.03
805-321-30	\$868.31
805-321-31	\$868.31
805-321-32	\$676.03
805-321-33	\$868.31
805-321-34	\$868.31
805-321-35	\$868.31
805-321-36	\$868.31
805-321-37	\$676.03
805-321-38	\$868.31
805-321-39	\$868.31
805-322-01	\$676.03
805-322-02	\$868.31
805-322-03	\$868.31
805-322-04	\$868.31
805-331-01	\$885.01
805-331-02	\$885.01
805-331-03	\$885.01
805-331-04	\$885.01
805-331-05	\$885.01
805-331-06	\$885.01
805-331-08	\$885.01
805-331-09	\$885.01
805-331-10	\$885.01
805-331-11	\$885.01
805-331-12	\$885.01
805-331-13	\$885.01
805-331-14	\$885.01
805-331-15	\$885.01
805-331-16	\$885.01
805-331-17	\$885.01
805-331-18	\$885.01
805-331-19	\$885.01

Exhibit C**CFD No. 88-1 of the Capistrano Unified School District**

<u>Assessor's Parcel Number</u>	<u>FY 2012-2013 Special Tax</u>
805-331-20	\$885.01
805-331-21	\$885.01
805-331-22	\$885.01
805-331-23	\$885.01
805-331-24	\$689.03
805-331-25	\$885.01
805-331-26	\$885.01
805-331-27	\$885.01
805-331-28	\$885.01
805-331-29	\$885.01
805-331-30	\$689.03
805-331-31	\$885.01
805-331-32	\$689.03
805-331-33	\$885.01
805-331-34	\$885.01
805-331-35	\$885.01
805-331-36	\$885.01
805-331-37	\$885.01
805-331-38	\$885.01
805-331-39	\$885.01
805-331-40	\$885.01
805-331-41	\$689.03
805-331-42	\$885.01
805-331-43	\$885.01
805-331-44	\$885.01
805-331-45	\$885.01
805-331-46	\$885.01
805-331-47	\$835.86
805-331-48	\$835.86
805-331-49	\$835.86
805-331-50	\$835.86
805-331-51	\$835.86
805-331-52	\$835.86
805-331-53	\$835.86
805-331-54	\$835.86
805-331-55	\$835.86
805-331-56	\$835.86
805-331-57	\$835.86
805-331-58	\$835.86
805-341-01	\$919.38
805-341-02	\$919.38
805-341-03	\$919.38
805-341-04	\$919.38
805-341-05	\$919.38
805-341-06	\$902.03
805-341-07	\$902.03
805-341-08	\$902.03
805-341-09	\$902.03

Exhibit C**CFD No. 88-1 of the Capistrano Unified School District**

<u>Assessor's Parcel Number</u>	<u>FY 2012-2013 Special Tax</u>
805-341-10	\$902.03
805-341-11	\$902.03
805-341-12	\$902.03
805-342-01	\$902.03
805-342-02	\$902.03
805-342-03	\$902.03
805-342-04	\$902.03
805-342-05	\$902.03
805-342-06	\$902.03
805-342-07	\$902.03
805-342-08	\$902.03
805-342-09	\$919.38
805-342-10	\$919.38
805-342-11	\$919.38
805-342-12	\$919.38
805-342-13	\$919.38
805-342-14	\$919.38
805-342-15	\$919.38
805-342-16	\$919.38
805-342-17	\$919.38
805-342-18	\$919.38
805-342-19	\$919.38
805-342-20	\$919.38
805-342-21	\$919.38
805-342-22	\$919.38
805-342-23	\$919.38
805-342-24	\$919.38
805-343-01	\$919.38
805-343-02	\$919.38
805-343-03	\$919.38
805-343-04	\$919.38
805-351-01	\$919.38
805-351-02	\$919.38
805-351-03	\$919.38
805-351-04	\$919.38
805-351-05	\$919.38
805-351-06	\$919.38
805-351-07	\$919.38
805-351-08	\$919.38
805-351-09	\$919.38
805-351-10	\$919.38
805-351-11	\$919.38
805-351-12	\$919.38
805-351-13	\$919.38
805-351-14	\$919.38
805-351-15	\$835.86
805-351-16	\$835.86
805-351-17	\$835.86

Exhibit C**CFD No. 88-1 of the Capistrano Unified School District**

<u>Assessor's Parcel Number</u>	<u>FY 2012-2013 Special Tax</u>
805-351-18	\$835.86
805-351-19	\$835.86
805-351-20	\$835.86
805-351-21	\$835.86
805-351-22	\$835.86
805-351-23	\$835.86
805-351-24	\$835.86
805-351-25	\$835.86
805-351-26	\$835.86
805-351-27	\$835.86
805-351-28	\$835.86
805-351-29	\$835.86
805-351-30	\$835.86
805-351-31	\$835.86
805-351-32	\$835.86
805-351-33	\$835.86
805-351-34	\$835.86
805-351-35	\$835.86
805-351-36	\$835.86
805-351-37	\$835.86
805-351-38	\$835.86
805-351-39	\$835.86
805-351-40	\$835.86
805-351-41	\$835.86
805-351-42	\$835.86
805-351-43	\$835.86
805-351-44	\$835.86
805-351-45	\$835.86
805-351-46	\$835.86
805-351-47	\$835.86
805-351-48	\$835.86
805-351-49	\$835.86
805-351-50	\$835.86
805-351-51	\$835.86
805-351-52	\$835.86
805-351-53	\$835.86
805-351-54	\$835.86
805-351-55	\$835.86
805-351-56	\$835.86
805-351-57	\$835.86
805-351-58	\$835.86
805-351-59	\$835.86
805-351-60	\$835.86
805-351-61	\$835.86
805-351-62	\$835.86
805-351-63	\$835.86
805-351-64	\$835.86
805-351-65	\$835.86

Exhibit C**CFD No. 88-1 of the Capistrano Unified School District**

<u>Assessor's Parcel Number</u>	<u>FY 2012-2013 Special Tax</u>
805-351-66	\$835.86
805-351-67	\$885.01
805-361-01	\$902.03
805-361-02	\$902.03
805-361-03	\$902.03
805-361-04	\$902.03
805-361-05	\$902.03
805-361-06	\$902.03
805-361-07	\$902.03
805-361-08	\$902.03
805-361-09	\$902.03
805-361-10	\$902.03
805-361-11	\$902.03
805-361-12	\$902.03
805-361-13	\$902.03
805-361-14	\$902.03
805-361-15	\$902.03
805-361-16	\$919.38
805-361-17	\$919.38
805-361-18	\$919.38
805-361-19	\$919.38
805-361-20	\$902.03
805-361-21	\$902.03
805-361-22	\$902.03
805-361-23	\$902.03
805-361-24	\$902.03
805-361-25	\$902.03
805-361-26	\$902.03
805-361-27	\$902.03
805-361-28	\$902.03
805-361-29	\$902.03
805-361-30	\$902.03
805-361-31	\$902.03
805-361-32	\$902.03
805-361-33	\$902.03
805-361-34	\$902.03
805-361-35	\$885.01
805-361-36	\$885.01
805-361-37	\$885.01
805-361-38	\$885.01
805-361-39	\$919.38
805-361-40	\$835.86
805-361-41	\$835.86
805-361-42	\$835.86
805-361-43	\$835.86
805-361-44	\$835.86
805-361-45	\$835.86
805-361-46	\$835.86

Exhibit C**CFD No. 88-1 of the Capistrano Unified School District**

<u>Assessor's Parcel Number</u>	<u>FY 2012-2013 Special Tax</u>
805-361-47	\$835.86
805-361-48	\$835.86
805-361-49	\$835.86
805-361-50	\$835.86
805-361-51	\$835.86
805-361-52	\$835.86
805-421-01	\$661.07
805-421-02	\$661.07
805-421-03	\$702.28
805-421-04	\$661.07
805-421-05	\$661.07
805-421-06	\$715.79
805-421-07	\$715.79
805-421-08	\$673.78
805-421-09	\$673.78
805-421-10	\$715.79
805-421-11	\$715.79
805-421-12	\$715.79
805-421-13	\$715.79
805-421-14	\$673.78
805-421-15	\$715.79
805-421-16	\$715.79
805-421-17	\$715.79
805-421-18	\$715.79
805-421-19	\$715.79
805-421-20	\$715.79
805-421-21	\$715.79
805-421-22	\$673.78
805-421-23	\$673.78
805-421-24	\$673.78
805-421-25	\$715.79
805-421-26	\$715.79
805-421-27	\$673.78
805-421-28	\$673.78
805-421-29	\$715.79
805-421-30	\$673.78
805-421-31	\$673.78
805-421-32	\$673.78
805-421-33	\$715.79
805-421-34	\$715.79
805-421-35	\$715.79
805-421-36	\$715.79
805-421-37	\$715.79
805-421-38	\$715.79
805-421-39	\$673.78
805-421-40	\$702.28
805-421-41	\$702.28
805-421-42	\$661.07

Exhibit C**CFD No. 88-1 of the Capistrano Unified School District**

<u>Assessor's Parcel Number</u>	<u>FY 2012-2013 Special Tax</u>
805-421-43	\$702.28
805-421-44	\$673.78
805-421-45	\$715.79
805-421-46	\$715.79
805-421-47	\$715.79
805-421-48	\$715.79
805-421-49	\$673.78
805-421-50	\$673.78
805-421-51	\$715.79
805-421-52	\$715.79
805-421-53	\$673.78
805-421-54	\$715.79
805-421-55	\$673.78
805-421-56	\$673.78
805-421-57	\$673.78
805-421-58	\$673.78
805-421-59	\$673.78
805-421-60	\$715.79
805-421-61	\$673.78
805-421-62	\$673.78
805-421-63	\$673.78
805-421-64	\$673.78
805-421-65	\$673.78
805-422-01	\$702.28
805-422-02	\$702.28
805-422-03	\$661.07
805-422-04	\$702.28
805-422-05	\$702.28
805-422-06	\$702.28
805-422-07	\$661.07
805-422-08	\$661.07
805-422-09	\$702.28
805-422-10	\$702.28
805-422-11	\$702.28
805-422-12	\$702.28
805-422-13	\$661.07
805-422-14	\$661.07
805-422-15	\$661.07
805-422-16	\$661.07
805-422-17	\$661.07
805-422-18	\$661.07
805-422-19	\$661.07
805-422-20	\$661.07
805-422-21	\$702.28
805-422-22	\$702.28
805-422-23	\$661.07
805-422-24	\$661.07
805-422-25	\$702.28

Exhibit C**CFD No. 88-1 of the Capistrano Unified School District**

<u>Assessor's Parcel Number</u>	<u>FY 2012-2013 Special Tax</u>
805-422-26	\$702.28
805-422-27	\$702.28
805-422-28	\$702.28
805-422-29	\$673.78
805-422-30	\$673.78
805-422-31	\$648.59
805-422-32	\$689.03
805-422-33	\$689.03
805-422-35	\$661.07
805-422-36	\$702.28
805-422-37	\$702.28
805-422-38	\$661.07
805-422-39	\$661.07
805-422-40	\$661.07
805-431-31	\$1,050.51
805-431-32	\$1,050.51
805-431-33	\$1,050.51
805-431-34	\$1,050.51
805-431-35	\$1,050.51
805-431-36	\$1,050.51
805-431-37	\$1,050.51
805-431-43	\$1,050.51
805-431-44	\$1,050.51
805-431-45	\$1,050.51
805-431-46	\$1,050.51
805-431-47	\$1,050.51
805-431-48	\$1,050.51
805-431-49	\$1,050.51
805-511-01	\$992.16
805-511-02	\$992.16
805-511-03	\$772.46
805-511-04	\$772.46
805-511-05	\$992.16
805-511-06	\$772.46
805-511-07	\$992.16
805-511-08	\$772.46
805-511-09	\$772.46
805-511-10	\$772.46
805-511-11	\$992.16
930-217-20	\$558.22
930-217-21	\$558.22
930-217-22	\$464.20
930-217-23	\$464.20
930-217-24	\$558.22
930-217-25	\$558.22
930-217-26	\$558.22
930-217-27	\$558.22
930-217-28	\$558.22

Exhibit C**CFD No. 88-1 of the Capistrano Unified School District**

<u>Assessor's Parcel Number</u>	<u>FY 2012-2013 Special Tax</u>
930-217-29	\$558.22
930-217-30	\$558.22
930-217-31	\$558.22
930-217-32	\$464.20
930-217-33	\$464.20
930-217-34	\$558.22
930-217-35	\$558.22
930-217-36	\$464.20
930-217-37	\$464.20
930-217-38	\$558.22
930-217-39	\$558.22
930-217-40	\$558.22
930-217-41	\$464.20
930-217-42	\$464.20
930-217-43	\$558.22
930-217-44	\$558.22
930-217-45	\$558.22
930-217-46	\$558.22
930-217-47	\$464.20
930-217-48	\$464.20
930-217-49	\$558.22
930-217-50	\$558.22
930-217-51	\$558.22
930-217-52	\$558.22
930-217-53	\$558.22
930-217-54	\$464.20
930-217-55	\$464.20
930-217-56	\$558.22
930-217-57	\$464.20
930-217-58	\$464.20
930-217-59	\$558.22
930-217-60	\$558.22
930-217-61	\$558.22
930-217-62	\$558.22
930-217-63	\$558.22
930-217-64	\$558.22
930-217-65	\$558.22
930-217-66	\$464.20
930-217-67	\$464.20
930-217-68	\$558.22
930-217-69	\$558.22
930-217-70	\$558.22
930-217-71	\$591.04
930-217-72	\$491.50
930-217-73	\$491.50
930-217-74	\$591.04
930-217-75	\$491.50
930-217-76	\$491.50

Exhibit C**CFD No. 88-1 of the Capistrano Unified School District**

<u>Assessor's Parcel Number</u>	<u>FY 2012-2013 Special Tax</u>
930-217-77	\$591.04
930-217-78	\$591.04
930-217-79	\$591.04
930-217-80	\$491.50
930-217-81	\$491.50
930-217-82	\$591.04
930-217-83	\$558.22
930-217-84	\$558.22
930-217-85	\$558.22
930-217-86	\$558.22
930-217-87	\$558.22
930-217-88	\$558.22
930-217-89	\$558.22
930-217-90	\$464.20
930-217-91	\$464.20
930-217-92	\$558.22
930-217-93	\$558.22
930-217-94	\$558.22
930-217-95	\$558.22
930-217-96	\$558.22
930-217-97	\$558.22
930-217-98	\$558.22
930-217-99	\$558.22
930-218-00	\$464.20
930-218-01	\$464.20
930-218-02	\$558.22
930-218-03	\$558.22
930-218-04	\$558.22
930-218-05	\$558.22
930-218-06	\$558.22
930-218-07	\$558.22
930-218-08	\$558.22
930-218-09	\$464.20
930-218-10	\$464.20
930-218-11	\$558.22
930-218-12	\$464.20
930-218-13	\$464.20
930-218-14	\$558.22
930-218-15	\$591.04
930-218-16	\$591.04
930-218-17	\$591.04
930-218-18	\$591.04
930-218-19	\$591.04
930-218-20	\$591.04
930-218-21	\$591.04
930-218-22	\$591.04
930-218-23	\$591.04
930-218-24	\$591.04

Exhibit C**CFD No. 88-1 of the Capistrano Unified School District**

<u>Assessor's Parcel Number</u>	<u>FY 2012-2013 Special Tax</u>
930-218-25	\$591.04
930-218-26	\$591.04
930-218-27	\$591.04
930-218-28	\$591.04
930-218-29	\$591.04
930-218-30	\$464.20
930-218-31	\$464.20
930-218-32	\$558.22
930-218-33	\$558.22
930-218-34	\$558.22
930-218-35	\$464.20
930-218-36	\$464.20
930-218-37	\$558.22
930-218-38	\$558.22
930-218-39	\$558.22
930-218-40	\$558.22
930-218-41	\$558.22
930-218-42	\$558.22
930-218-43	\$558.22
930-218-44	\$558.22
930-218-45	\$558.22
930-218-46	\$558.22
930-218-47	\$558.22
930-218-48	\$558.22
930-218-49	\$558.22
930-218-50	\$558.22
930-218-51	\$558.22
930-218-52	\$464.20
930-218-53	\$464.20
930-218-54	\$558.22
930-218-55	\$558.22
930-218-56	\$558.22
930-218-57	\$464.20
930-218-58	\$464.20
930-218-59	\$558.22
930-218-60	\$558.22
930-218-61	\$558.22
930-218-62	\$558.22
930-218-63	\$558.22
930-218-64	\$558.22
931-834-96	\$296.73
931-834-97	\$371.65
931-834-98	\$371.65
931-834-99	\$371.65
931-835-00	\$371.65
931-835-01	\$371.65
931-835-02	\$371.65
931-835-03	\$371.65

Exhibit C**CFD No. 88-1 of the Capistrano Unified School District**

<u>Assessor's Parcel Number</u>	<u>FY 2012-2013 Special Tax</u>
931-835-04	\$371.65
931-835-05	\$296.73
931-835-06	\$296.73
931-835-07	\$296.73
931-835-08	\$296.73
931-835-09	\$371.65
931-835-10	\$371.65
931-835-11	\$371.65
931-835-12	\$371.65
931-835-13	\$371.65
931-835-14	\$371.65
931-835-15	\$371.65
931-835-16	\$371.65
931-835-17	\$296.73
931-835-18	\$296.73
931-835-19	\$371.65
931-835-20	\$371.65
931-835-21	\$371.65
931-835-22	\$371.65
931-835-23	\$296.73
931-835-24	\$296.73
931-835-25	\$371.65
931-835-26	\$371.65
931-835-27	\$371.65
931-835-28	\$371.65
931-835-29	\$371.65
931-835-30	\$371.65
931-835-31	\$371.65
931-835-32	\$371.65
931-835-33	\$296.73
931-835-34	\$296.73
931-835-35	\$371.65
931-835-36	\$371.65
931-835-37	\$371.65
931-835-38	\$371.65
931-835-39	\$371.65
931-835-40	\$371.65
931-835-41	\$371.65
931-835-42	\$371.65
931-835-43	\$296.73
931-835-44	\$296.73
931-835-45	\$371.65
931-835-46	\$371.65
931-835-47	\$371.65
931-835-48	\$371.65
931-835-49	\$296.73
931-835-85	\$416.65
931-835-86	\$416.65

Exhibit C**CFD No. 88-1 of the Capistrano Unified School District**

<u>Assessor's Parcel Number</u>	<u>FY 2012-2013 Special Tax</u>
931-835-87	\$416.65
931-835-88	\$416.65
931-835-89	\$416.65
931-835-90	\$416.65
931-835-91	\$416.65
931-835-92	\$416.65
931-835-93	\$416.65
931-835-94	\$416.65
931-835-95	\$416.65
931-835-96	\$416.65
931-835-97	\$416.65
931-835-98	\$416.65
931-835-99	\$416.65
931-836-00	\$416.65
931-836-01	\$416.65
931-836-02	\$416.65
931-836-03	\$416.65
931-836-04	\$416.65
931-836-05	\$416.65
931-836-06	\$416.65
931-836-07	\$416.65
931-836-08	\$416.65
931-836-09	\$416.65
931-836-10	\$416.65
931-836-11	\$416.65
931-836-12	\$416.65
931-836-13	\$416.65
931-836-14	\$416.65
931-836-15	\$416.65
931-836-16	\$416.65
931-836-17	\$416.65
931-836-18	\$416.65
931-836-19	\$416.65
931-836-20	\$416.65
931-836-21	\$416.65
931-836-22	\$416.65
931-836-23	\$416.65
931-836-24	\$416.65
931-836-25	\$416.65
931-836-26	\$416.65
931-836-27	\$416.65
931-836-28	\$416.65
931-836-29	\$416.65
931-836-30	\$416.65
931-836-31	\$416.65
931-836-32	\$416.65
931-836-33	\$416.65
931-836-34	\$416.65

Exhibit C**CFD No. 88-1 of the Capistrano Unified School District**

<u>Assessor's Parcel Number</u>	<u>FY 2012-2013 Special Tax</u>
931-836-35	\$416.65
931-836-36	\$416.65
931-836-37	\$416.65
931-836-38	\$416.65
931-836-39	\$296.73
931-836-40	\$371.65
931-836-41	\$371.65
931-836-42	\$371.65
931-836-43	\$371.65
931-836-44	\$371.65
931-836-45	\$371.65
931-836-46	\$371.65
931-836-47	\$371.65
931-836-48	\$296.73
931-836-49	\$424.66
931-836-50	\$424.66
931-836-51	\$424.66
931-836-52	\$424.66
931-836-53	\$424.66
931-836-54	\$424.66
931-836-55	\$424.66
931-836-56	\$424.66
931-836-57	\$424.66
931-836-58	\$424.66
931-836-59	\$424.66
931-836-60	\$424.66
931-836-61	\$424.66
931-836-62	\$424.66
931-836-63	\$424.66
931-836-64	\$424.66
931-836-65	\$424.66
931-836-66	\$424.66
931-836-67	\$424.66
931-836-68	\$424.66
931-836-69	\$424.66
931-836-70	\$424.66
931-836-71	\$424.66
931-836-72	\$424.66
931-836-73	\$424.66
931-836-74	\$424.66
931-836-75	\$424.66
931-836-76	\$424.66
931-836-77	\$424.66
931-836-78	\$424.66
931-836-79	\$424.66
931-836-80	\$424.66
931-836-81	\$424.66
931-836-82	\$424.66

Exhibit C**CFD No. 88-1 of the Capistrano Unified School District**

<u>Assessor's Parcel Number</u>	<u>FY 2012-2013 Special Tax</u>
931-836-83	\$424.66
931-836-84	\$424.66
931-836-85	\$432.83
931-836-86	\$432.83
931-836-87	\$432.83
931-836-88	\$432.83
931-836-89	\$432.83
931-836-90	\$432.83
931-836-91	\$432.83
931-836-92	\$432.83
931-836-93	\$432.83
931-836-94	\$432.83
931-836-95	\$432.83
931-836-96	\$432.83
931-836-97	\$416.65
931-836-98	\$416.65
931-836-99	\$416.65
931-837-00	\$416.65
931-837-01	\$416.65
931-837-02	\$416.65
931-837-03	\$432.83
931-837-04	\$432.83
931-837-05	\$432.83
931-837-06	\$432.83
931-837-07	\$432.83
931-837-08	\$432.83
931-837-09	\$424.66
931-837-10	\$424.66
931-837-11	\$424.66
931-837-12	\$424.66
931-837-13	\$424.66
931-837-14	\$424.66
931-837-15	\$424.66
931-837-16	\$424.66
931-837-17	\$424.66
931-837-18	\$432.83
931-837-19	\$432.83
931-837-20	\$432.83
931-837-21	\$432.83
931-837-22	\$432.83
931-837-23	\$432.83
931-837-24	\$432.83
931-837-25	\$432.83
931-837-26	\$432.83
931-837-27	\$432.83
931-837-28	\$432.83
931-837-29	\$432.83
931-837-30	\$432.83

Exhibit C**CFD No. 88-1 of the Capistrano Unified School District**

<u>Assessor's Parcel Number</u>	<u>FY 2012-2013 Special Tax</u>
931-837-31	\$432.83
931-837-32	\$432.83
931-837-33	\$432.83
931-837-34	\$432.83
931-837-35	\$432.83
935-432-20	\$371.65
935-432-21	\$371.65
935-432-22	\$371.65
935-432-23	\$371.65
935-432-24	\$371.65
935-432-25	\$371.65
935-432-26	\$371.65
935-432-27	\$371.65
935-432-28	\$371.65
935-432-29	\$371.65
935-432-30	\$371.65
935-432-31	\$371.65
935-432-32	\$371.65
935-432-33	\$371.65
935-432-34	\$371.65
935-432-35	\$371.65
935-432-36	\$371.65
935-432-37	\$371.65
935-432-38	\$371.65
935-432-39	\$371.65
935-432-40	\$371.65
935-432-41	\$371.65
935-432-42	\$371.65
935-432-43	\$371.65
935-432-44	\$371.65
935-432-45	\$371.65
935-432-46	\$371.65
935-432-47	\$371.65
935-432-48	\$371.65
935-432-49	\$371.65
935-432-50	\$371.65
935-432-51	\$371.65
935-432-52	\$371.65
935-432-53	\$371.65
935-432-54	\$371.65
935-432-55	\$371.65
935-432-56	\$371.65
935-432-57	\$371.65
935-432-58	\$371.65
935-432-59	\$371.65
935-432-60	\$371.65
935-432-61	\$371.65
935-432-62	\$371.65

Exhibit C**CFD No. 88-1 of the Capistrano Unified School District**

<u>Assessor's Parcel Number</u>	<u>FY 2012-2013 Special Tax</u>
935-432-63	\$371.65
935-432-64	\$371.65
935-432-65	\$371.65
935-432-66	\$371.65
935-432-67	\$371.65
935-432-68	\$371.65
935-432-69	\$371.65
935-432-70	\$371.65
935-432-71	\$371.65
935-432-72	\$371.65
935-432-73	\$371.65
935-432-74	\$371.65
935-432-75	\$371.65
935-432-76	\$371.65
935-432-77	\$371.65
935-432-78	\$371.65
935-432-79	\$371.65
935-432-80	\$371.65
935-432-81	\$371.65
935-432-82	\$371.65
935-432-83	\$371.65
935-432-84	\$371.65
935-432-85	\$371.65
935-432-86	\$371.65
935-432-87	\$371.65
935-432-88	\$371.65
935-432-89	\$371.65
935-432-90	\$371.65
935-432-91	\$371.65
935-432-92	\$371.65
935-432-93	\$371.65
935-432-94	\$371.65
935-432-95	\$371.65
935-432-96	\$371.65
935-432-97	\$371.65
935-432-98	\$371.65
935-432-99	\$371.65
935-433-00	\$378.80
935-433-01	\$378.80
935-433-02	\$378.80
935-433-03	\$378.80
935-433-04	\$378.80
935-433-05	\$378.80
935-433-06	\$378.80
935-433-07	\$378.80
935-433-08	\$378.80
935-433-09	\$378.80
935-433-10	\$378.80

Exhibit C**CFD No. 88-1 of the Capistrano Unified School District**

<u>Assessor's Parcel Number</u>	<u>FY 2012-2013 Special Tax</u>
935-433-11	\$378.80
935-433-12	\$378.80
935-433-13	\$378.80
935-433-14	\$378.80
935-433-15	\$378.80
935-433-16	\$378.80
935-433-17	\$378.80
935-433-18	\$378.80
935-433-19	\$378.80
935-433-20	\$378.80
935-433-21	\$378.80
935-433-22	\$378.80
935-433-23	\$378.80
935-433-24	\$378.80
935-433-25	\$378.80
935-433-26	\$378.80
935-433-27	\$378.80
935-433-28	\$378.80
935-433-29	\$378.80
935-433-30	\$378.80
935-433-31	\$378.80
935-433-32	\$378.80
935-433-33	\$378.80
935-433-34	\$378.80
935-433-35	\$378.80
935-433-36	\$378.80
935-433-37	\$378.80
935-433-38	\$378.80
935-433-39	\$378.80
935-433-40	\$386.09
935-433-41	\$386.09
935-433-42	\$386.09
935-433-43	\$386.09
935-433-44	\$386.09
935-433-45	\$386.09
935-433-46	\$386.09
935-433-47	\$386.09
935-433-48	\$386.09
935-433-49	\$386.09
935-433-50	\$386.09
935-433-51	\$386.09
935-433-52	\$386.09
935-433-53	\$386.09
935-433-54	\$386.09
935-433-55	\$386.09
935-433-56	\$386.09
935-433-57	\$386.09
935-433-58	\$386.09

Exhibit C**CFD No. 88-1 of the Capistrano Unified School District**

<u>Assessor's Parcel Number</u>	<u>FY 2012-2013 Special Tax</u>
935-433-59	\$386.09
935-433-60	\$386.09
935-433-61	\$386.09
935-433-62	\$386.09
935-433-63	\$386.09
935-433-64	\$386.09
935-433-65	\$386.09
935-433-66	\$386.09
935-433-67	\$386.09
935-433-68	\$386.09
935-433-69	\$386.09
935-433-70	\$386.09
935-433-71	\$386.09
935-433-72	\$386.09
935-433-73	\$386.09
935-433-74	\$386.09
935-433-75	\$386.09
935-433-76	\$386.09
935-433-77	\$386.09
935-433-78	\$386.09
935-433-79	\$386.09
935-433-80	\$393.51
935-433-81	\$393.51
935-433-82	\$393.51
935-433-83	\$393.51
935-433-84	\$393.51
935-433-85	\$393.51
935-433-86	\$393.51
935-433-87	\$393.51
935-433-88	\$393.51
935-433-89	\$393.51
935-433-90	\$393.51
935-433-91	\$393.51
935-433-92	\$393.51
935-433-93	\$393.51
935-433-94	\$393.51
935-433-95	\$393.51
935-433-96	\$393.51
935-433-97	\$393.51
935-433-98	\$393.51
935-433-99	\$393.51
935-434-00	\$393.51
935-434-01	\$393.51
935-434-02	\$393.51
935-434-03	\$393.51
935-434-04	\$393.51
935-434-05	\$393.51
935-434-06	\$393.51

Exhibit C**CFD No. 88-1 of the Capistrano Unified School District**

<u>Assessor's Parcel Number</u>	<u>FY 2012-2013 Special Tax</u>
935-434-07	\$393.51
935-434-08	\$393.51
935-434-09	\$393.51
935-434-10	\$393.51
935-434-11	\$393.51
935-434-12	\$371.65
935-434-13	\$371.65
935-434-14	\$371.65
935-434-15	\$371.65
935-434-16	\$371.65
935-434-17	\$371.65
935-434-18	\$371.65
935-434-19	\$371.65
935-434-25	\$378.80
935-434-26	\$378.80
935-434-27	\$378.80
935-434-28	\$378.80
935-434-29	\$302.44
935-434-30	\$302.44
935-434-31	\$378.80
935-434-32	\$378.80
935-434-33	\$378.80
935-434-34	\$378.80
935-434-35	\$378.80
935-434-36	\$378.80
935-434-37	\$378.80
935-434-38	\$378.80
935-434-39	\$302.44
935-434-40	\$302.44
935-434-41	\$378.80
935-434-42	\$378.80
935-434-43	\$378.80
935-434-44	\$378.80
935-434-45	\$302.44
935-434-46	\$302.44
935-434-47	\$378.80
935-434-48	\$378.80
935-434-49	\$378.80
935-434-50	\$378.80
935-434-51	\$302.44
935-434-52	\$302.44
935-434-53	\$378.80
935-434-54	\$378.80
935-434-55	\$378.80
935-434-56	\$378.80
935-434-57	\$378.80
935-434-58	\$378.80
935-434-59	\$378.80

Exhibit C**CFD No. 88-1 of the Capistrano Unified School District**

<u>Assessor's Parcel Number</u>	<u>FY 2012-2013 Special Tax</u>
935-434-60	\$378.80
935-434-61	\$302.44
935-434-62	\$302.44
935-434-63	\$378.80
935-434-64	\$378.80
935-434-65	\$378.80
935-434-66	\$378.80
935-434-67	\$378.80
935-434-68	\$378.80
935-434-69	\$378.80
935-434-70	\$378.80
935-434-71	\$302.44
935-434-72	\$302.44
935-434-73	\$378.80
935-434-74	\$378.80
935-434-75	\$378.80
935-434-76	\$378.80
935-434-77	\$378.80
935-434-78	\$378.80
935-434-79	\$378.80
935-434-80	\$378.80
935-434-81	\$302.44
935-434-82	\$302.44
935-434-83	\$378.80
935-434-84	\$378.80
935-434-85	\$378.80
935-434-86	\$378.80
935-434-87	\$302.44
935-434-88	\$302.44
935-434-89	\$378.80
935-434-90	\$378.80
935-434-91	\$378.80
935-434-92	\$378.80
935-434-93	\$378.80
935-434-94	\$378.80
935-434-95	\$378.80
935-434-96	\$378.80
935-434-97	\$302.44
935-434-98	\$302.44
935-434-99	\$386.09
935-435-00	\$386.09
935-435-01	\$386.09
935-435-02	\$386.09
935-435-03	\$308.26
935-435-04	\$308.26
935-435-05	\$386.09
935-435-06	\$386.09
935-435-07	\$386.09

Exhibit C**CFD No. 88-1 of the Capistrano Unified School District**

<u>Assessor's Parcel Number</u>	<u>FY 2012-2013 Special Tax</u>
935-435-08	\$386.09
935-435-09	\$308.26
935-435-10	\$308.26
935-435-11	\$386.09
935-435-12	\$386.09
935-435-13	\$386.09
935-435-14	\$386.09
935-435-15	\$308.26
935-435-16	\$308.26
935-435-17	\$386.09
935-435-18	\$386.09
935-435-19	\$386.09
935-435-20	\$386.09
935-435-21	\$386.09
935-435-22	\$386.09
935-435-23	\$386.09
935-435-24	\$386.09
935-435-25	\$308.26
935-435-26	\$308.26
935-435-27	\$386.09
935-435-28	\$386.09
935-435-29	\$386.09
935-435-30	\$386.09
935-435-31	\$308.26
935-435-32	\$308.26
935-435-33	\$386.09
935-435-34	\$386.09
935-435-35	\$386.09
935-435-36	\$386.09
935-435-37	\$308.26
935-435-38	\$308.26
935-435-39	\$386.09
935-435-40	\$386.09
935-435-41	\$386.09
935-435-42	\$386.09
935-435-43	\$386.09
935-435-44	\$386.09
935-435-45	\$386.09
935-435-46	\$386.09
935-435-47	\$308.26
935-435-48	\$308.26
935-435-49	\$386.09
935-435-50	\$386.09
935-435-51	\$386.09
935-435-52	\$386.09
935-435-53	\$308.26
935-435-54	\$308.26
935-435-55	\$386.09

Exhibit C**CFD No. 88-1 of the Capistrano Unified School District**

<u>Assessor's Parcel Number</u>	<u>FY 2012-2013 Special Tax</u>
935-435-56	\$386.09
935-435-57	\$386.09
935-435-58	\$386.09
935-435-59	\$386.09
935-435-60	\$386.09
935-435-61	\$386.09
935-435-62	\$386.09
935-435-63	\$308.26
935-435-64	\$308.26
935-435-65	\$386.09
935-435-66	\$386.09
935-435-67	\$386.09
935-435-68	\$386.09
935-435-69	\$308.26
935-435-70	\$308.26
935-435-71	\$386.09
935-435-72	\$386.09
935-435-73	\$386.09
935-435-74	\$386.09
935-435-75	\$386.09
935-435-76	\$386.09
935-435-77	\$386.09
935-435-78	\$386.09
935-435-79	\$308.26
935-435-80	\$308.26
935-435-81	\$393.51
935-435-82	\$393.51
935-435-83	\$393.51
935-435-84	\$393.51
935-435-85	\$393.51
935-435-86	\$393.51
935-435-87	\$393.51
935-435-88	\$393.51
935-435-89	\$314.19
935-435-90	\$314.19
935-435-91	\$393.51
935-435-92	\$393.51
935-435-93	\$393.51
935-435-94	\$393.51
935-435-95	\$393.51
935-435-96	\$393.51
935-435-97	\$393.51
935-435-98	\$393.51
935-435-99	\$314.19
935-436-00	\$314.19
935-436-01	\$393.51
935-436-02	\$393.51
935-436-03	\$393.51

Exhibit C**CFD No. 88-1 of the Capistrano Unified School District**

<u>Assessor's Parcel Number</u>	<u>FY 2012-2013 Special Tax</u>
935-436-04	\$393.51
935-436-05	\$314.19
935-436-06	\$314.19
935-436-07	\$314.19
935-436-08	\$393.51
935-436-09	\$393.51
935-436-10	\$393.51
935-436-11	\$393.51
935-436-12	\$393.51
935-436-13	\$393.51
935-436-14	\$393.51
935-436-15	\$393.51
935-436-16	\$314.19
935-451-11	\$464.20
935-451-12	\$464.20
935-451-13	\$558.22
935-451-14	\$558.22
935-451-15	\$558.22
935-451-16	\$558.22
935-451-17	\$558.22
935-451-18	\$558.22
935-451-19	\$464.20
935-451-20	\$464.20
935-451-21	\$464.20
935-451-22	\$464.20
935-451-23	\$558.22
935-451-24	\$558.22
935-451-25	\$558.22
935-451-26	\$558.22
935-451-27	\$558.22
935-451-28	\$558.22
935-451-29	\$558.22
935-451-30	\$558.22
935-451-31	\$558.22
935-451-32	\$558.22
935-451-33	\$558.22
935-451-34	\$558.22
935-451-35	\$558.22
935-451-36	\$558.22
935-451-37	\$558.22
935-451-38	\$558.22
935-451-39	\$464.20
935-451-40	\$464.20
935-451-41	\$464.20
935-451-42	\$558.22
935-451-43	\$558.22
935-451-44	\$558.22
935-451-45	\$558.22

Exhibit C**CFD No. 88-1 of the Capistrano Unified School District**

<u>Assessor's Parcel Number</u>	<u>FY 2012-2013 Special Tax</u>
935-451-46	\$558.22
935-451-47	\$558.22
935-451-48	\$464.20
935-451-49	\$464.20
935-451-50	\$558.22
935-451-51	\$558.22
935-451-52	\$558.22
935-451-53	\$464.20
935-451-54	\$464.20
935-451-55	\$464.20
935-451-56	\$464.20
935-451-57	\$558.22
935-451-58	\$558.22
935-451-59	\$558.22
935-451-60	\$464.20
935-451-61	\$464.20
935-451-62	\$558.22
935-451-63	\$558.22
935-451-64	\$558.22
935-451-65	\$568.95
935-451-66	\$568.95
935-451-67	\$558.22
935-451-68	\$558.22
935-451-69	\$558.22
935-451-70	\$464.20
935-451-71	\$464.20
935-451-72	\$473.13
935-451-73	\$473.13
935-451-74	\$568.95
935-451-75	\$568.95
935-451-76	\$568.95
935-451-77	\$568.95
935-451-78	\$568.95
935-451-79	\$568.95
935-451-80	\$568.95
935-451-81	\$568.95
935-451-82	\$568.95
935-451-83	\$558.22
935-451-84	\$558.22
935-451-85	\$558.22
935-451-86	\$558.22
935-451-87	\$558.22
935-451-88	\$558.22
935-451-89	\$558.22
935-451-90	\$558.22
935-451-91	\$558.22
935-451-92	\$558.22
935-451-93	\$558.22

Exhibit C**CFD No. 88-1 of the Capistrano Unified School District**

<u>Assessor's Parcel Number</u>	<u>FY 2012-2013 Special Tax</u>
935-451-94	\$558.22
935-451-95	\$558.22
935-451-96	\$558.22
935-451-97	\$558.22
935-451-98	\$558.22
935-451-99	\$558.22
935-452-00	\$464.20
935-452-01	\$464.20
935-452-02	\$558.22
935-452-03	\$558.22
935-452-04	\$558.22
935-452-05	\$464.20
935-452-06	\$464.20
935-452-07	\$558.22
935-452-08	\$558.22
935-452-09	\$558.22
935-452-10	\$558.22
935-452-11	\$558.22
935-452-12	\$558.22
935-452-13	\$473.13
935-452-14	\$473.13
935-452-15	\$568.95
935-452-16	\$568.95
935-452-17	\$568.95
935-452-18	\$568.95
935-452-19	\$568.95
935-452-20	\$568.95
935-452-21	\$473.13
935-452-22	\$473.13
935-452-23	\$568.95
935-452-24	\$568.95
935-452-25	\$568.95
935-452-26	\$473.13
935-452-27	\$473.13
935-452-28	\$568.95
935-452-29	\$568.95
935-452-30	\$473.13
935-452-31	\$473.13
935-452-32	\$568.95
935-452-33	\$568.95
935-452-34	\$568.95
935-452-35	\$568.95
935-452-36	\$568.95
935-452-42	\$371.65
935-452-43	\$371.65
935-452-44	\$371.65
935-452-45	\$371.65
935-452-46	\$371.65

Exhibit C**CFD No. 88-1 of the Capistrano Unified School District**

<u>Assessor's Parcel Number</u>	<u>FY 2012-2013 Special Tax</u>
935-452-47	\$296.73
935-452-48	\$296.73
935-452-49	\$296.73
935-452-50	\$296.73
935-452-51	\$371.65
935-452-52	\$371.65
935-452-53	\$371.65
935-452-54	\$371.65
935-452-55	\$371.65
935-452-56	\$371.65
935-452-57	\$371.65
935-452-58	\$371.65
935-452-59	\$371.65
935-452-60	\$371.65
935-452-61	\$371.65
935-452-62	\$371.65
935-452-63	\$296.73
935-452-64	\$296.73
935-452-65	\$371.65
935-452-66	\$371.65
935-452-67	\$371.65
935-452-68	\$371.65
935-452-69	\$296.73
935-452-70	\$296.73
935-452-71	\$371.65
935-452-72	\$371.65
935-452-73	\$371.65
935-452-74	\$371.65
935-452-75	\$371.65
935-452-76	\$371.65
935-452-77	\$371.65
935-452-78	\$371.65
935-452-79	\$371.65
935-452-80	\$371.65
935-452-81	\$371.65
935-452-82	\$371.65
935-452-83	\$371.65
935-452-84	\$378.80
935-452-85	\$378.80
935-452-86	\$371.65
935-452-87	\$371.65
935-452-88	\$371.65
935-452-89	\$371.65
935-452-90	\$371.65
935-452-91	\$371.65
935-452-92	\$371.65
935-452-93	\$371.65
935-452-94	\$371.65

Exhibit C**CFD No. 88-1 of the Capistrano Unified School District**

<u>Assessor's Parcel Number</u>	<u>FY 2012-2013 Special Tax</u>
935-452-95	\$371.65
935-452-96	\$371.65
935-452-97	\$296.73
935-452-98	\$296.73
935-452-99	\$296.73
935-453-00	\$296.73
935-453-01	\$371.65
935-453-02	\$371.65
935-453-03	\$371.65
935-453-04	\$371.65
935-453-05	\$371.65
935-453-06	\$371.65
935-453-07	\$371.65
935-453-08	\$371.65
935-453-09	\$371.65
935-453-10	\$371.65
935-453-11	\$371.65
935-453-12	\$296.73
935-453-13	\$296.73
935-453-14	\$296.73
935-453-15	\$296.73
935-453-16	\$371.65
935-453-17	\$371.65
935-453-18	\$371.65
935-453-19	\$371.65
935-453-20	\$371.65
935-453-21	\$371.65
935-453-22	\$378.80
935-453-23	\$378.80
935-453-24	\$378.80
935-453-25	\$378.80
935-453-26	\$378.80
935-453-27	\$378.80
935-453-28	\$378.80
935-453-29	\$371.65
935-453-30	\$371.65
935-453-31	\$378.80
935-453-32	\$371.65
935-453-33	\$371.65
935-453-34	\$371.65
935-453-35	\$378.80
935-453-36	\$378.80
935-453-37	\$378.80
935-453-38	\$378.80
935-453-39	\$378.80
935-453-40	\$378.80
935-453-41	\$378.80
935-453-42	\$378.80

Exhibit C**CFD No. 88-1 of the Capistrano Unified School District**

<u>Assessor's Parcel Number</u>	<u>FY 2012-2013 Special Tax</u>
935-453-43	\$378.80
935-453-44	\$378.80
935-453-45	\$378.80
935-453-46	\$378.80
935-453-47	\$378.80
935-453-48	\$378.80
935-453-49	\$378.80
935-453-50	\$378.80
935-453-51	\$378.80
935-453-52	\$378.80
935-453-53	\$378.80
935-453-54	\$302.44
935-453-55	\$378.80
935-453-56	\$302.44
935-453-57	\$302.44
935-453-58	\$378.80
935-453-59	\$378.80
935-453-60	\$378.80
935-453-61	\$378.80
935-453-62	\$378.80
935-453-63	\$378.80
935-453-64	\$378.80
935-453-65	\$378.80
935-453-66	\$378.80
935-453-67	\$378.80
935-453-68	\$378.80
935-453-69	\$378.80
935-453-70	\$378.80
935-453-71	\$378.80
935-453-72	\$378.80
935-453-73	\$378.80
935-453-74	\$378.80
935-453-75	\$378.80
935-453-76	\$378.80
935-453-77	\$378.80
935-453-78	\$378.80
935-453-79	\$378.80
935-453-80	\$378.80
935-453-81	\$378.80
935-453-82	\$378.80
935-453-83	\$378.80
935-453-84	\$378.80
935-453-85	\$378.80
935-453-86	\$378.80
935-453-87	\$378.80
935-453-88	\$302.44
935-453-89	\$302.44
935-453-90	\$302.44

Exhibit C**CFD No. 88-1 of the Capistrano Unified School District**

<u>Assessor's Parcel Number</u>	<u>FY 2012-2013 Special Tax</u>
935-453-91	\$302.44
935-453-92	\$378.80
935-453-93	\$378.80
935-453-94	\$378.80
935-453-95	\$378.80
935-453-96	\$378.80
935-453-97	\$378.80
935-453-98	\$378.80
935-453-99	\$378.80
935-454-00	\$378.80
935-454-01	\$378.80
935-454-02	\$378.80
935-454-03	\$302.44
935-454-04	\$302.44
935-454-05	\$302.44
935-454-06	\$302.44
935-454-07	\$378.80
935-454-08	\$378.80
935-454-09	\$378.80
935-454-10	\$378.80
935-454-11	\$378.80
935-454-12	\$378.80
935-454-13	\$378.80
935-454-14	\$378.80
935-454-15	\$378.80
935-454-16	\$378.80
935-454-17	\$378.80
935-454-18	\$302.44
935-454-19	\$302.44
935-454-20	\$378.80
935-454-21	\$378.80
935-454-22	\$378.80
935-454-23	\$378.80
935-454-24	\$302.44
935-454-25	\$302.44
935-454-26	\$378.80
935-454-27	\$378.80
935-454-28	\$378.80
935-454-29	\$378.80
935-454-30	\$378.80
935-454-31	\$378.80
935-454-32	\$378.80
935-454-33	\$378.80
935-454-34	\$393.51
935-454-35	\$393.51
935-454-36	\$393.51
935-454-37	\$393.51
935-454-38	\$393.51

Exhibit C**CFD No. 88-1 of the Capistrano Unified School District**

<u>Assessor's Parcel Number</u>	<u>FY 2012-2013 Special Tax</u>
935-454-39	\$393.51
935-454-40	\$314.19
935-454-41	\$314.19
935-454-42	\$314.19
935-454-43	\$314.19
935-454-44	\$393.51
935-454-45	\$393.51
935-454-46	\$393.51
935-454-47	\$393.51
935-454-48	\$393.51
935-454-49	\$393.51
935-454-50	\$393.51
935-454-51	\$393.51
935-454-52	\$393.51
935-454-53	\$393.51
935-454-54	\$393.51
935-454-55	\$393.51
935-454-56	\$393.51
935-454-57	\$393.51
935-454-58	\$393.51
935-454-59	\$393.51
935-454-60	\$393.51
935-454-61	\$393.51
935-454-62	\$393.51
935-454-63	\$393.51
935-454-64	\$314.19
935-454-65	\$314.19
935-454-66	\$393.51
935-454-67	\$393.51
935-454-68	\$393.51
935-454-69	\$393.51
935-454-70	\$314.19
935-454-71	\$314.19
935-454-72	\$393.51
935-454-73	\$393.51
935-454-74	\$393.51
935-454-75	\$393.51
935-454-76	\$393.51
935-454-77	\$393.51
935-454-78	\$393.51
935-454-79	\$393.51
935-454-80	\$386.09
935-454-81	\$386.09
935-454-82	\$386.09
935-454-83	\$386.09
935-454-84	\$386.09
935-454-85	\$386.09
935-454-86	\$308.26

Exhibit C**CFD No. 88-1 of the Capistrano Unified School District**

<u>Assessor's Parcel Number</u>	<u>FY 2012-2013 Special Tax</u>
935-454-87	\$308.26
935-454-88	\$386.09
935-454-89	\$386.09
935-454-90	\$386.09
935-454-91	\$386.09
935-454-92	\$308.26
935-454-93	\$308.26
935-454-94	\$386.09
935-454-95	\$386.09
935-454-96	\$386.09
935-454-97	\$386.09
935-454-98	\$386.09
935-454-99	\$386.09
935-455-00	\$386.09
935-455-01	\$386.09
935-455-02	\$386.09
935-455-03	\$386.09
935-455-04	\$386.09
935-455-05	\$386.09
935-455-06	\$386.09
935-455-07	\$386.09
935-455-08	\$386.09
935-455-09	\$386.09
935-455-10	\$386.09
935-455-11	\$386.09
935-455-12	\$386.09
935-455-13	\$386.09
935-455-14	\$386.09
935-455-15	\$386.09
935-455-16	\$386.09
935-455-17	\$386.09
935-455-18	\$386.09
935-455-19	\$308.26
935-455-20	\$308.26
935-455-21	\$308.26
935-455-22	\$308.26
935-455-23	\$386.09
935-455-24	\$386.09
935-455-25	\$386.09
935-455-26	\$386.09
935-455-27	\$386.09
935-455-28	\$386.09
935-455-29	\$386.09
935-455-30	\$386.09
935-455-31	\$386.09
935-455-32	\$386.09
935-455-33	\$386.09
935-455-34	\$308.26

Exhibit C**CFD No. 88-1 of the Capistrano Unified School District**

<u>Assessor's Parcel Number</u>	<u>FY 2012-2013 Special Tax</u>
935-455-35	\$308.26
935-455-36	\$386.09
935-455-37	\$386.09
935-455-38	\$386.09
935-455-39	\$386.09
935-455-40	\$308.26
935-455-41	\$308.26
935-455-42	\$386.09
935-455-43	\$386.09
935-455-44	\$386.09
935-455-45	\$386.09
935-455-46	\$386.09
935-455-47	\$386.09
935-455-48	\$386.09
935-455-49	\$386.09
935-455-50	\$386.09
935-455-51	\$386.09
935-455-52	\$416.65
935-455-53	\$416.65
935-455-54	\$416.65
935-455-55	\$416.65
935-455-56	\$416.65
935-455-57	\$332.66
935-455-58	\$332.66
935-455-59	\$332.66
935-455-60	\$332.66
935-455-61	\$416.65
935-455-62	\$416.65
935-455-63	\$416.65
935-455-64	\$416.65
935-455-65	\$416.65
935-455-66	\$416.65
935-455-67	\$416.65
935-455-68	\$416.65
935-455-69	\$416.65
935-455-70	\$416.65
935-455-71	\$416.65
935-455-72	\$416.65
935-455-73	\$416.65
935-455-74	\$416.65
935-455-75	\$416.65
935-455-76	\$416.65
935-455-77	\$416.65
935-455-78	\$416.65
935-455-79	\$416.65
935-455-80	\$416.65
935-455-81	\$393.51
935-455-82	\$393.51

Exhibit C**CFD No. 88-1 of the Capistrano Unified School District**

<u>Assessor's Parcel Number</u>	<u>FY 2012-2013 Special Tax</u>
935-455-83	\$393.51
935-455-84	\$393.51
937-850-91	\$558.22
937-850-92	\$464.20
937-850-93	\$464.20
937-850-94	\$464.20
937-850-95	\$558.22
937-850-96	\$558.22
937-850-97	\$558.22
937-850-98	\$558.22
937-850-99	\$558.22
937-851-00	\$464.20
937-851-01	\$558.22
937-851-02	\$558.22
937-851-03	\$558.22
937-851-04	\$558.22
937-851-05	\$464.20
937-851-06	\$464.20
937-851-07	\$464.20
937-851-08	\$464.20
937-851-09	\$464.20
937-851-10	\$558.22
937-851-11	\$558.22
937-851-12	\$558.22
937-851-13	\$558.22
937-851-14	\$558.22
937-851-15	\$558.22
937-851-16	\$558.22
937-851-17	\$558.22
937-851-18	\$558.22
937-851-19	\$558.22
937-851-20	\$558.22
937-851-21	\$558.22
937-851-22	\$558.22
937-851-23	\$558.22
937-851-24	\$464.20
937-851-25	\$464.20
937-851-26	\$464.20
937-851-27	\$558.22
937-851-28	\$568.95
937-851-29	\$568.95
937-851-30	\$568.95
937-851-31	\$568.95
937-851-32	\$473.13
937-851-33	\$473.13
937-851-34	\$473.13
937-851-35	\$473.13
937-851-36	\$568.95

Exhibit C**CFD No. 88-1 of the Capistrano Unified School District**

<u>Assessor's Parcel Number</u>	<u>FY 2012-2013 Special Tax</u>
937-851-37	\$568.95
937-851-38	\$473.13
937-851-39	\$473.13
937-851-40	\$473.13
937-851-41	\$473.13
937-851-42	\$473.13
937-851-43	\$473.13
937-851-44	\$568.95
937-851-45	\$568.95
937-851-46	\$473.13
937-851-47	\$473.13
937-851-48	\$473.13
937-851-49	\$473.13
937-851-50	\$568.95
937-851-51	\$568.95
937-851-52	\$568.95
937-851-53	\$568.95
937-851-54	\$568.95
937-851-55	\$568.95
937-851-56	\$568.95
937-851-57	\$473.13
937-851-58	\$473.13
937-851-59	\$473.13
937-851-60	\$473.13
937-851-61	\$473.13
937-851-62	\$473.13
937-851-63	\$568.95
937-851-64	\$568.95
937-851-65	\$568.95
937-851-66	\$568.95
937-851-67	\$473.13
937-851-68	\$473.13
937-851-69	\$473.13
937-851-70	\$568.95
937-851-71	\$568.95
937-851-72	\$568.95
937-851-73	\$473.13
937-851-74	\$473.13
937-851-75	\$473.13
937-851-76	\$579.89
937-851-77	\$579.89
937-851-78	\$579.89
937-851-79	\$482.22
937-851-80	\$482.22
937-851-81	\$482.22
937-851-82	\$482.22
937-851-83	\$482.22
937-851-84	\$482.22

Exhibit C**CFD No. 88-1 of the Capistrano Unified School District**

<u>Assessor's Parcel Number</u>	<u>FY 2012-2013 Special Tax</u>
937-851-85	\$579.89
937-851-86	\$579.89
937-851-87	\$579.89
937-851-88	\$482.22
937-851-89	\$482.22
937-851-90	\$482.22
937-851-91	\$482.22
937-851-92	\$482.22
937-851-93	\$482.22
937-851-94	\$579.89
937-851-95	\$482.22
937-851-96	\$482.22
937-851-97	\$482.22
937-851-98	\$579.89
937-851-99	\$579.89
937-852-00	\$579.89
937-852-01	\$579.89
937-852-02	\$579.89
937-852-03	\$579.89
937-852-04	\$482.22
937-852-05	\$482.22
937-852-06	\$482.22
937-852-07	\$482.22
937-852-08	\$482.22
937-852-09	\$482.22
937-852-10	\$482.22
937-852-11	\$579.89
937-852-12	\$579.89
937-852-13	\$579.89
937-852-14	\$579.89
937-852-15	\$464.20
937-852-16	\$464.20
937-852-17	\$464.20
937-852-18	\$558.22
937-852-19	\$558.22
937-852-20	\$558.22
938-060-09	\$558.22
938-060-10	\$558.22
938-060-11	\$558.22
938-060-12	\$558.22
938-060-13	\$558.22
938-060-14	\$558.22
938-060-15	\$558.22
938-060-16	\$558.22
938-060-17	\$558.22
938-060-18	\$558.22
938-060-19	\$558.22
938-060-20	\$558.22

Exhibit C**CFD No. 88-1 of the Capistrano Unified School District**

<u>Assessor's Parcel Number</u>	<u>FY 2012-2013 Special Tax</u>
938-060-21	\$558.22
938-060-22	\$558.22
938-060-23	\$558.22
938-060-24	\$558.22
938-060-25	\$558.22
938-060-26	\$558.22
938-060-27	\$558.22
938-060-28	\$558.22
938-060-29	\$558.22
938-060-30	\$558.22
938-060-31	\$558.22
938-060-32	\$558.22
938-060-33	\$558.22
938-060-34	\$558.22
938-060-35	\$558.22
938-060-36	\$558.22
938-060-37	\$558.22
938-060-38	\$558.22
938-060-39	\$558.22
938-060-40	\$558.22
938-060-41	\$558.22
938-060-42	\$558.22
938-060-43	\$558.22
938-060-44	\$558.22
938-060-45	\$558.22
938-060-46	\$558.22
938-060-47	\$558.22
938-060-48	\$558.22
938-060-49	\$558.22
938-060-50	\$558.22
938-060-51	\$579.89
938-060-52	\$579.89
938-060-53	\$579.89
938-060-54	\$579.89
938-060-55	\$558.22
938-060-56	\$558.22
938-060-57	\$558.22
938-060-58	\$558.22
938-060-59	\$558.22
938-060-60	\$558.22
938-060-61	\$558.22
938-060-62	\$558.22
938-060-63	\$558.22
938-060-64	\$558.22
938-060-65	\$558.22
938-060-66	\$558.22
938-060-67	\$558.22
938-060-68	\$558.22

Exhibit C**CFD No. 88-1 of the Capistrano Unified School District**

<u>Assessor's Parcel Number</u>	<u>FY 2012-2013 Special Tax</u>
938-060-69	\$558.22
938-060-70	\$558.22
938-060-71	\$558.22
938-060-72	\$558.22
938-060-73	\$558.22
938-060-74	\$558.22
938-060-75	\$558.22
938-060-76	\$558.22
938-060-77	\$558.22
938-060-78	\$558.22
938-060-79	\$558.22
938-060-80	\$558.22
938-060-81	\$558.22
938-060-82	\$558.22
938-060-83	\$558.22
938-060-84	\$558.22
938-060-85	\$558.22
938-060-86	\$558.22
938-060-87	\$558.22
938-060-88	\$558.22
938-060-89	\$558.22
938-060-90	\$558.22
938-060-91	\$558.22
938-080-10	\$558.22
938-080-11	\$558.22
938-080-12	\$558.22
938-080-13	\$558.22
938-080-14	\$558.22
938-080-15	\$558.22
938-080-16	\$558.22
938-080-17	\$558.22
938-080-18	\$558.22
938-080-19	\$558.22
938-080-20	\$558.22
938-080-21	\$558.22
938-080-22	\$558.22
938-080-23	\$558.22
938-080-24	\$558.22
938-080-25	\$558.22
938-080-26	\$558.22
938-080-27	\$558.22
938-080-28	\$558.22
938-080-29	\$558.22
938-080-30	\$568.95
938-080-31	\$568.95
938-080-32	\$568.95
938-080-33	\$568.95
938-080-34	\$568.95

Exhibit C**CFD No. 88-1 of the Capistrano Unified School District**

<u>Assessor's Parcel Number</u>	<u>FY 2012-2013 Special Tax</u>
938-080-35	\$568.95
938-080-36	\$568.95
938-080-37	\$568.95
938-080-38	\$568.95
938-080-39	\$568.95
938-080-40	\$568.95
938-080-41	\$568.95
938-080-42	\$568.95
938-080-43	\$568.95
938-080-44	\$568.95
938-080-45	\$568.95
938-080-46	\$568.95
938-080-47	\$568.95
938-080-48	\$568.95
938-080-49	\$568.95
938-080-50	\$568.95
938-080-51	\$568.95
938-080-52	\$568.95
938-080-53	\$568.95
938-080-54	\$568.95
938-080-55	\$568.95
938-080-56	\$568.95
938-080-57	\$568.95
938-080-58	\$568.95
938-080-59	\$568.95
938-080-60	\$568.95
938-080-61	\$568.95
938-080-62	\$568.95
938-080-63	\$568.95
938-080-64	\$568.95
938-080-65	\$568.95
938-835-24	\$558.22
938-835-25	\$558.22
938-835-26	\$558.22
938-835-27	\$558.22
938-835-28	\$602.41
938-835-29	\$602.41
938-835-30	\$602.41
938-835-31	\$558.22
938-835-32	\$558.22
938-835-33	\$558.22
938-835-34	\$558.22
938-835-35	\$558.22
938-835-36	\$558.22
938-835-37	\$558.22
938-835-38	\$558.22
938-835-39	\$558.22
938-835-40	\$558.22

Exhibit C**CFD No. 88-1 of the Capistrano Unified School District**

<u>Assessor's Parcel Number</u>	<u>FY 2012-2013 Special Tax</u>
938-835-41	\$558.22
938-835-42	\$558.22
938-835-43	\$558.22
938-835-44	\$558.22
938-835-45	\$558.22
938-835-46	\$558.22
938-835-47	\$558.22
938-835-48	\$558.22
938-835-49	\$558.22
938-835-50	\$558.22
938-835-51	\$558.22
938-835-52	\$558.22
938-835-53	\$558.22
938-835-54	\$558.22
938-835-55	\$558.22
938-835-56	\$558.22
938-835-57	\$558.22
938-835-58	\$558.22
938-835-59	\$558.22
938-835-60	\$558.22
938-835-61	\$558.22
938-835-62	\$558.22
938-835-63	\$558.22
938-835-64	\$558.22
938-835-65	\$558.22
938-835-66	\$558.22
938-835-67	\$558.22
938-835-68	\$558.22
938-835-69	\$558.22
938-835-70	\$558.22
938-835-71	\$558.22
938-835-72	\$558.22
938-835-73	\$558.22
938-835-74	\$558.22
938-835-75	\$558.22
938-835-76	\$558.22
938-835-77	\$558.22
938-835-78	\$558.22
938-835-79	\$558.22
938-835-80	\$558.22
938-835-81	\$558.22
938-835-82	\$558.22
938-835-83	\$558.22
938-835-84	\$558.22
938-835-85	\$558.22
938-835-86	\$558.22
938-835-87	\$558.22
938-835-88	\$558.22

Exhibit C**CFD No. 88-1 of the Capistrano Unified School District**

<u>Assessor's Parcel Number</u>	<u>FY 2012-2013 Special Tax</u>
938-835-89	\$558.22
938-835-90	\$558.22
938-835-91	\$558.22
938-835-92	\$558.22
938-835-93	\$558.22
938-835-94	\$558.22
938-835-95	\$558.22
938-835-96	\$558.22
938-835-97	\$558.22
938-835-98	\$558.22
938-835-99	\$558.22
938-836-00	\$558.22
938-836-01	\$591.04
938-836-02	\$591.04
938-836-03	\$591.04
938-836-04	\$591.04
938-836-05	\$591.04
938-836-06	\$591.04
938-836-07	\$591.04
938-836-08	\$591.04
938-836-09	\$591.04
938-836-10	\$591.04
938-836-11	\$591.04
938-836-12	\$591.04
938-836-13	\$591.04
938-836-14	\$602.41
938-836-15	\$602.41
938-836-16	\$602.41
938-836-17	\$602.41
938-836-18	\$602.41
938-836-19	\$602.41
938-836-20	\$602.41
938-836-21	\$602.41
938-836-22	\$602.41
938-836-23	\$602.41
938-836-24	\$602.41
938-836-25	\$602.41
938-836-26	\$602.41
938-836-27	\$602.41
938-836-28	\$602.41
938-836-29	\$602.41
938-836-30	\$602.41
938-836-31	\$602.41
938-836-32	\$602.41
938-836-33	\$602.41
938-836-34	\$602.41
938-836-35	\$602.41
938-836-36	\$602.41

Exhibit C**CFD No. 88-1 of the Capistrano Unified School District**

<u>Assessor's Parcel Number</u>	<u>FY 2012-2013 Special Tax</u>
938-836-37	\$602.41
938-836-38	\$602.41
938-836-39	\$602.41
938-836-40	\$602.41
938-836-41	\$602.41
938-836-42	\$602.41
938-836-43	\$602.41
938-836-44	\$602.41
938-836-45	\$602.41
938-836-46	\$602.41
938-836-47	\$602.41
938-836-48	\$602.41
938-836-49	\$602.41
938-836-50	\$602.41
938-836-51	\$602.41
938-836-52	\$602.41
938-836-53	\$602.41
938-836-54	\$602.41
938-836-55	\$602.41
Total FY 2012-2013 Special Tax Levy	\$1,509,093.00
Total Number of Parcels Taxed	2,659